

Record the crankpin O.D. code letters from the crank weight.

NOTE

- Letters (A or B) on the crank weight are the codes for the crankpin O.D.s from the left side.

Cross reference the crankpin and rod codes to determine the replacement bearing color code.

Connecting rod I.D. code		1	2
		Crankpin O.D. code	36.000- 36.008 mm (1.4173- 1.4176 in)
A	32.992-33.000 mm (1.2989-1.2992 in)	C (Yellow)	B (Green)
B	32.984-32.992 mm (1.2986-1.2989 in)	B (Green)	A (Brown)

A : Brown : 1.494-1.498 mm (0.0588-0.0590 in)

B : Green : 1.490-1.494 mm (0.0587-0.0588 in)

C : Yellow : 1.486-1.490 mm (0.0585-0.0587 in)

Connecting Rod Selection

The weight code stamped on the connecting rod is an alphabetical code.

Be sure to use the connecting rods having the same weight code in an engine.

CAUTION

- If a connecting rod having the different weight code is to be used, be sure that the difference in weight (code) is held within a single weight rank.

Starter Clutch Needle Bearing Replacement

Remove the needle bearing with a commercially available universal bearing puller.

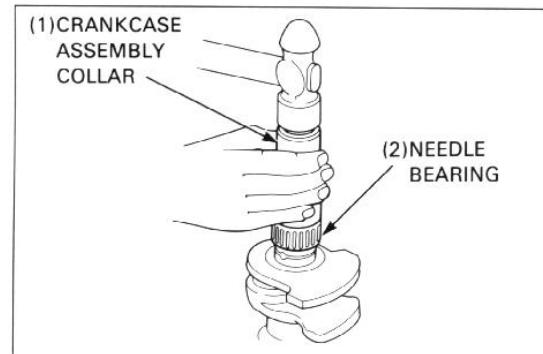
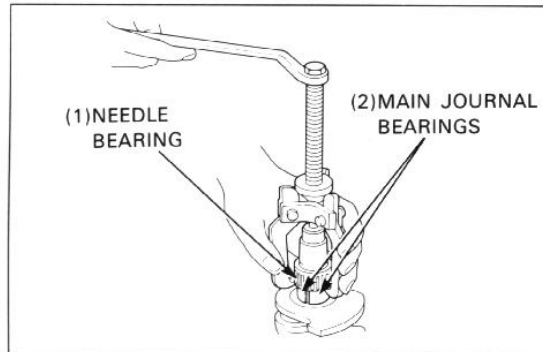
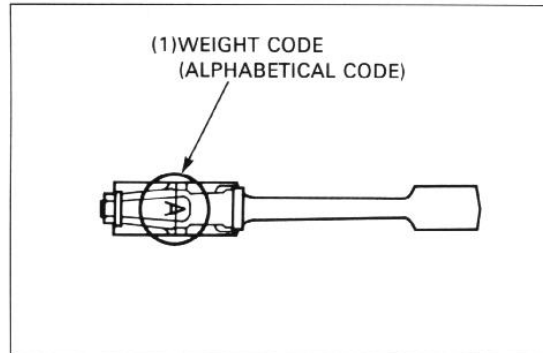
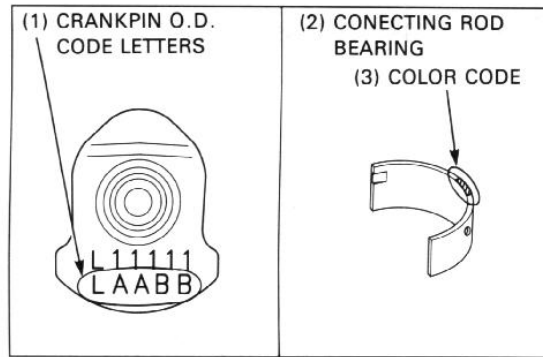
CAUTION

- To protect the crankshaft main journal from the bearing puller claws, cover the mainshaft journal properly; worn main journal bearings are usable as protectors.

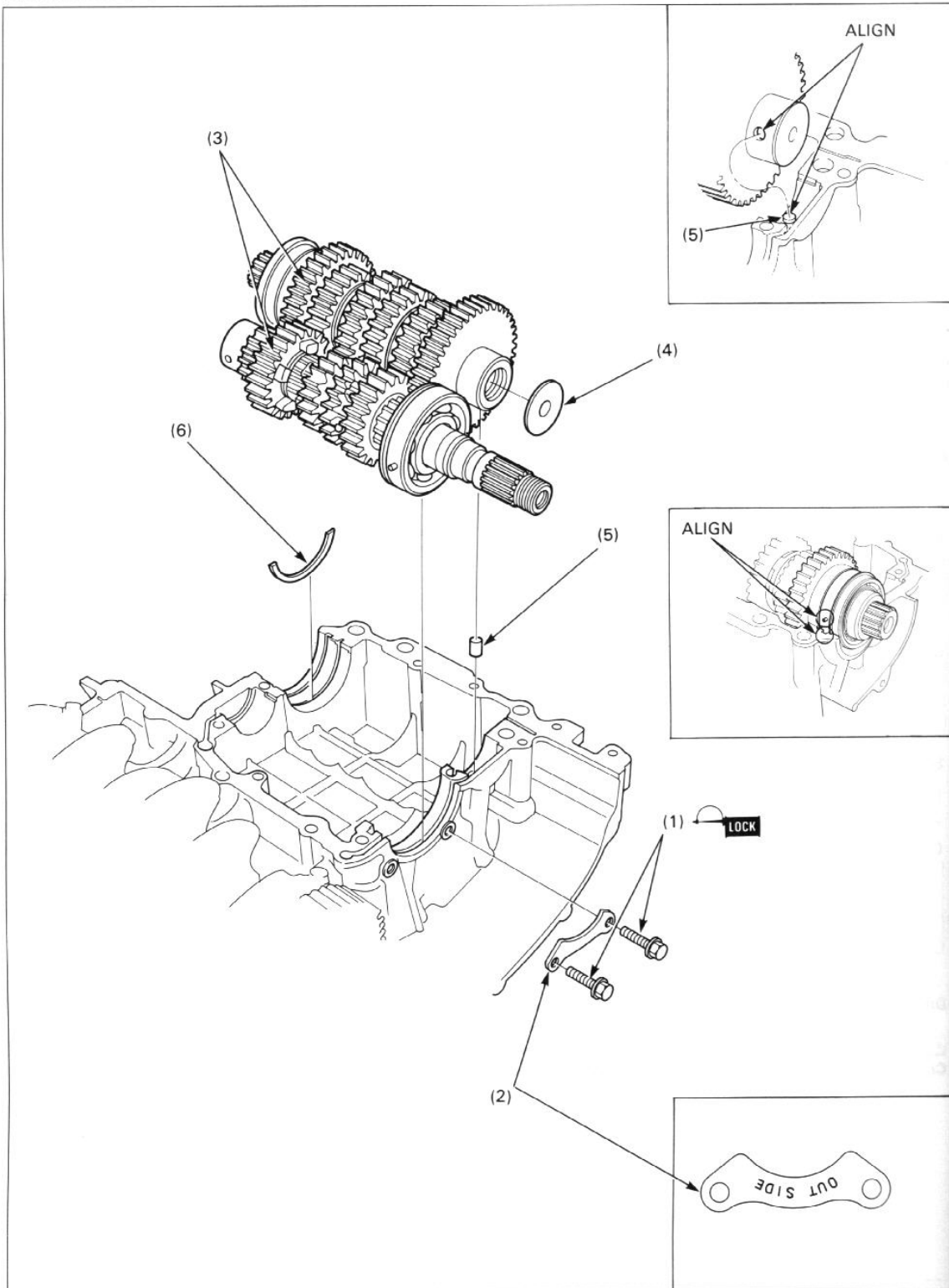
Drive a new needle bearing onto the crankshaft.

 S TOOL

Crankcase assembly collar 07964-MB00200



Transmission Removal/Installation



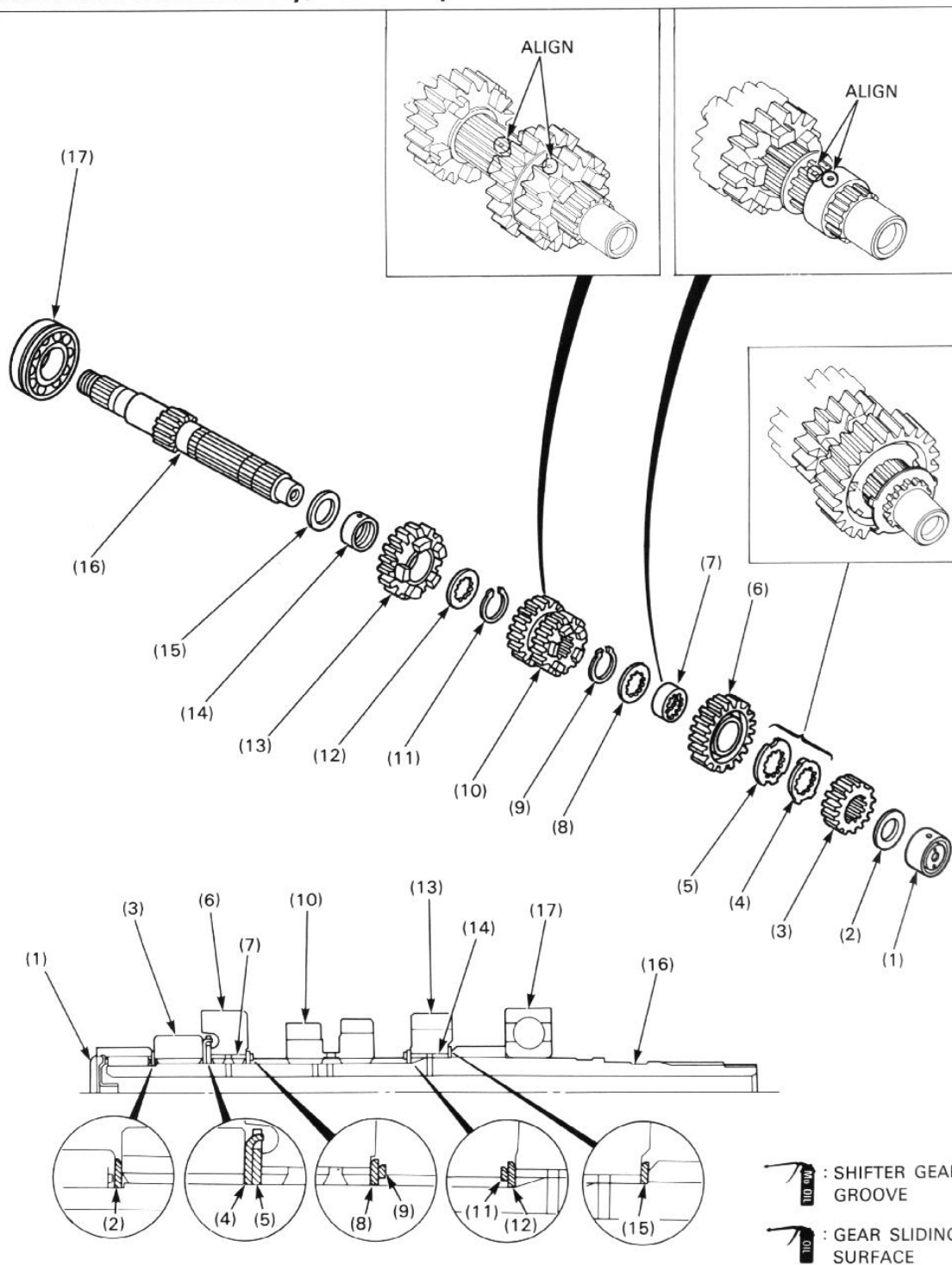
Requisite Service

- Crankcase separation(page 10-2)

- Crankcase assembly(page 10-6)

Procedure	Q'ty	Remarks
Removal Order		
(1) Countershaft bearing set plate bolt	2	
(2) Countershaft bearing set plate	1	
(3) Mainshaft/Countershaft assembly	1/1	
(4) Countershaft end plate	1	
(5) Dowel pin	1	
(6) Countershaft bearing stopper	1	
Installation Order		
(6) Countershaft bearing stopper	1	
(5) Dowel pin	1	
(4) Countershaft end plate	1	
(3) Mainshaft/Countershaft assembly	1/1	NOTE <ul style="list-style-type: none"> • Align the hole in the countershaft needle bearing case with the pin in the upper crankcase. • Align the groove in the countershaft bearing with the stopper, and pin on the bearing with the groove in the crankcase.
(2) Countershaft bearing set plate	1	Install the bearing set plate with the "OUT SIDE" mark facing out.
(1) Countershaft bearing set plate bolt	2	When installing, apply a locking agent to the threads of the bolts.

Mainshaft Disassembly/Assembly



NOTE

- Apply molybdenum oil to the shifter gear grooves. Apply oil to all sliding surfaces of the mainshaft, countershaft and bushings.
- Install the thrust washer that contacts with the rotating gear with the chamfered side facing the rotating gear.
- Install the snap ring with the chamfered side facing the thrust load side.
- Install the spline bushing, aligning the oil holes in the bushing and the mainshaft.

Requisite Service

- Transmission removal/installation(page 11-6)

Procedure		Q'ty	Remarks
	Disassembly Order		Assembly is in the reverse order of disassembly.
(1)	Shaft end case	1	
(2)	Washer	1	
(3)	M2 gear (16T)	1	
(4)	Lock washer	1	When installing, align the claws of the lock washer with the cutouts in the spline washer.
(5)	Spline washer	1	
(6)	M6 gear (23T)	1	
(7)	M6 spline bushing	1	
(8)	Spline washer	1	
(9)	Snap ring	1	
(10)	M3/M4 gear (17/19T)	1	NOTE • Install the M3/M4 gear aligning either oil hole in the M3/M4 gear and the mainshaft.
(11)	Snap ring	1	
(12)	Spline washer	1	
(13)	M5 gear (20T)	1	
(14)	M5 bushing	1	
(15)	Thrust washer	1	
(16)	Mainshaft /M1 gear (14T)	1	
(17)	Mainshaft bearing (6305)	1	Refet to page 11-12 for replacement.