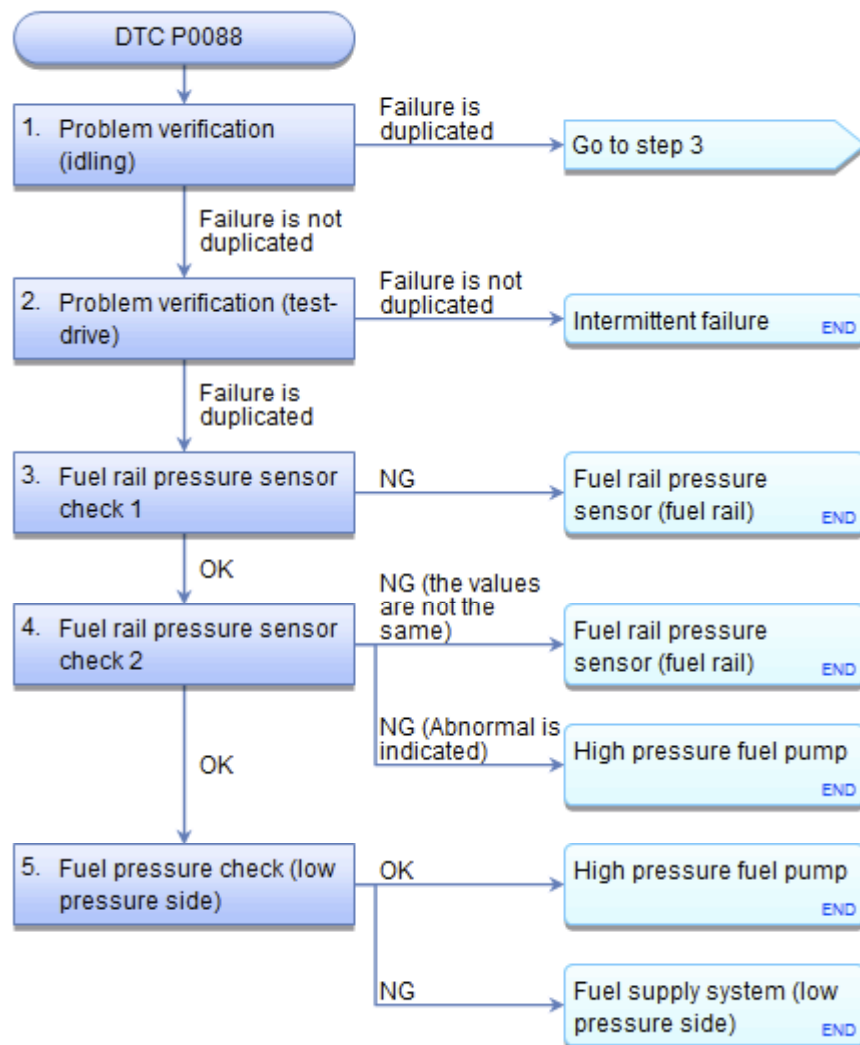


DTC Troubleshooting: P0088



DTC P0088: Fuel Rail Pressure Too High

NOTE:

- Before you troubleshoot, [review the general troubleshooting information](#).
- If any of the DTCs listed below are stored at the same time as P0088, troubleshoot those DTCs first, then recheck for P0088.

P0190, P0191, P0192, P0193: Fuel rail pressure sensor

P0201, P0202, P0203, P0204: No. 1—No. 4 cylinder injector(s)

P0351, P0352, P0353, P0354: No. 1—No. 4 cylinder ignition coil(s)

P2623: High pressure fuel pump

| DTC Description | Confirmed DTC | Pending DTC |
|-----------------------------------|---------------|-------------|
| P0088 Fuel Rail Pressure Too High | | |

DTC (PGM-FI)

1. Problem verification (idling):

- Record all the on-board snapshots with the HDS.
- Turn the vehicle to the ON mode.
- Clear the DTC with the HDS.

Clear DTC

- 4. Start the engine.
- 5. Hold the engine speed at 3,000 rpm without load (in neutral) until the radiator fan comes on, then let it idle.
- 6. Select the DI Fuel Pressure Test in the INSPECTION MENU with the HDS.

DI Fuel Pressure Test

- 7. Check for Pending or Confirmed DTCs with the HDS.

| DTC Description | Confirmed DTC | Pending DTC |
|-----------------------------------|---------------|-------------|
| P0088 Fuel Rail Pressure Too High | | |

Is DTC P0088 indicated?

YES The failure is duplicated. Go to step 3.

NO Go to step 2.

2. Problem verification (test-drive):

- 1. Test-drive the vehicle for several minutes in the range of these recorded on-board snapshot parameters:
 - ENGINE SPEED
 - VEHICLE SPEED
 - MAP SENSOR
 - TP SENSOR
 - APP SENSOR
 - ECT SENSOR 1
 - FUEL PRESSURE CONVERTED FROM PF SENSOR
 - FUEL PRESSURE DIRECT INJECTION SYSTEM
 - IAT SENSOR (1)

On-board Snapshot

| Signal | Current conditions | |
|--|--------------------|------|
| | Values | Unit |
| ENGINE SPEED | | |
| VEHICLE SPEED | | |
| MAP SENSOR | | |
| TP SENSOR | | |
| APP SENSOR | | |
| ECT SENSOR 1 | | |
| FUEL PRESSURE CONVERTED FROM PF SENSOR | | |
| FUEL PRESSURE DIRECT INJECTION SYSTEM | | |
| IAT SENSOR (1) | | |