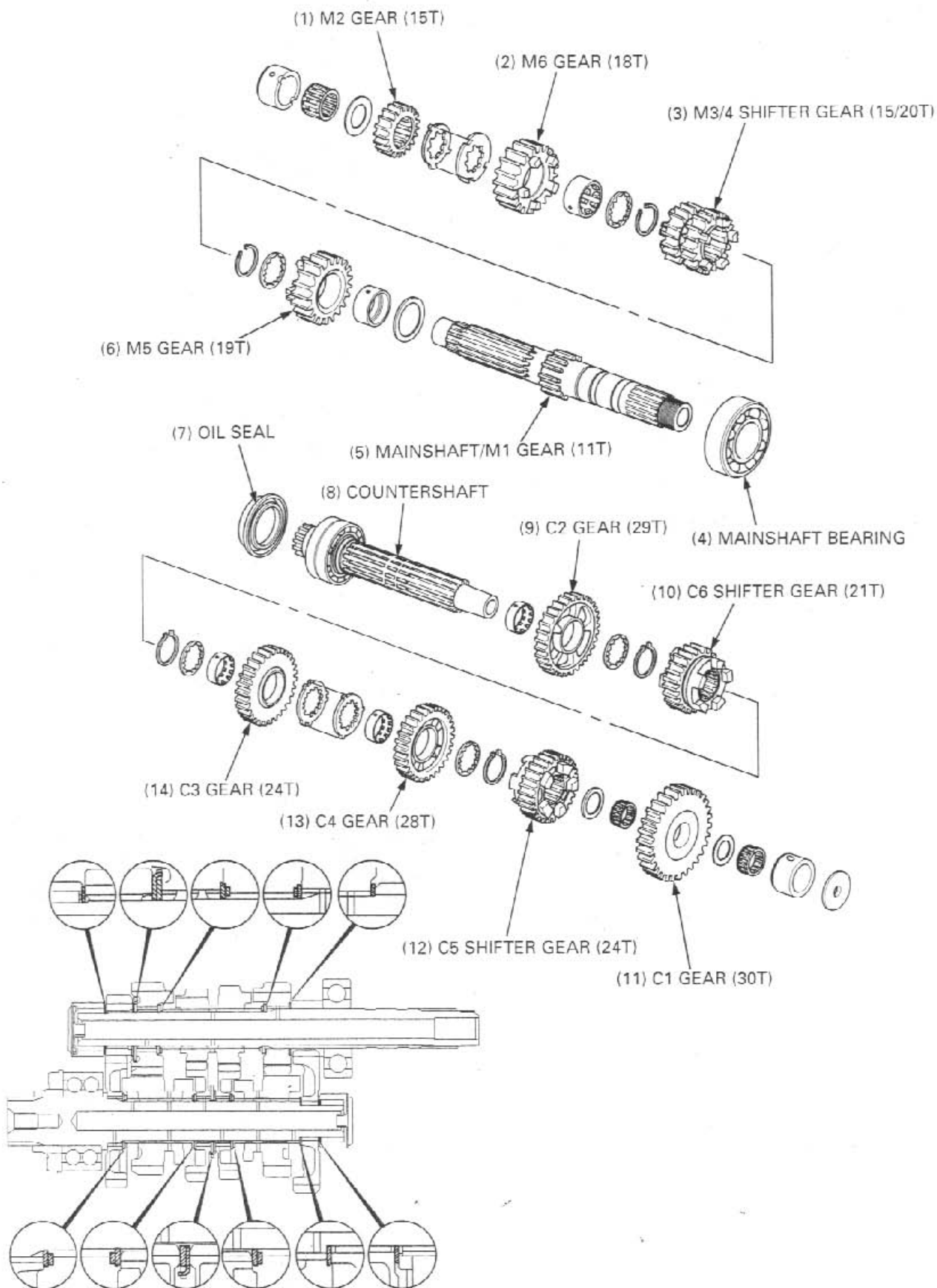
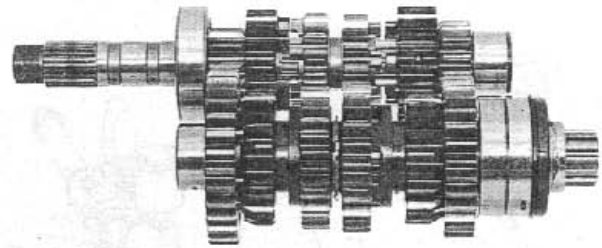


ASSEMBLY



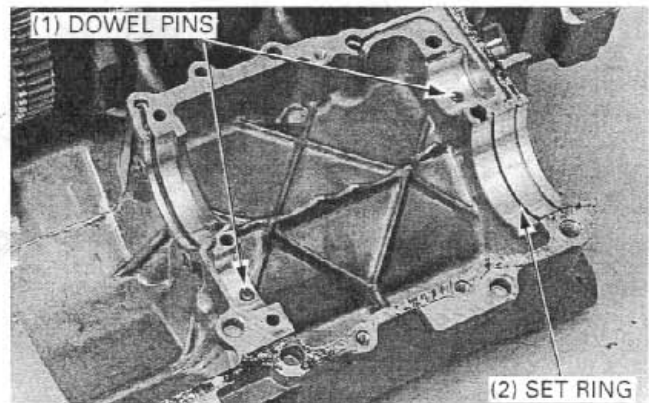
Assemble the transmission gear and shafts.
Coat each gear with clean engine oil and check for smooth movement.

Apply molybdenum disulfide oil to the shift fork grooves in the M3/4, C5 and C6 gear.

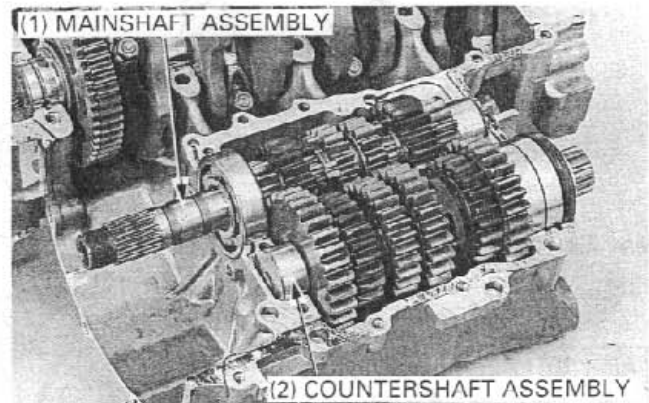


INSTALLATION

Install the dowel pins on the upper crankcase holes.
Install the set ring into the groove of the crankcase.



Install the mainshaft and countershaft by aligning the countershaft bearing groove with the set ring on the crankcase, and aligning the bearing cap holes with the dowel pins.



Apply a locking agent to the mainshaft bearing set plate bolt threads.

Install the mainshaft bearing set plate with its "OUT SIDE" mark facing out and tighten the bolts to the specified torque.

TORQUE: 12 N·m (1.2 kgf·m, 9 lbf·ft)

Assemble the crankcase (page 11-12).

