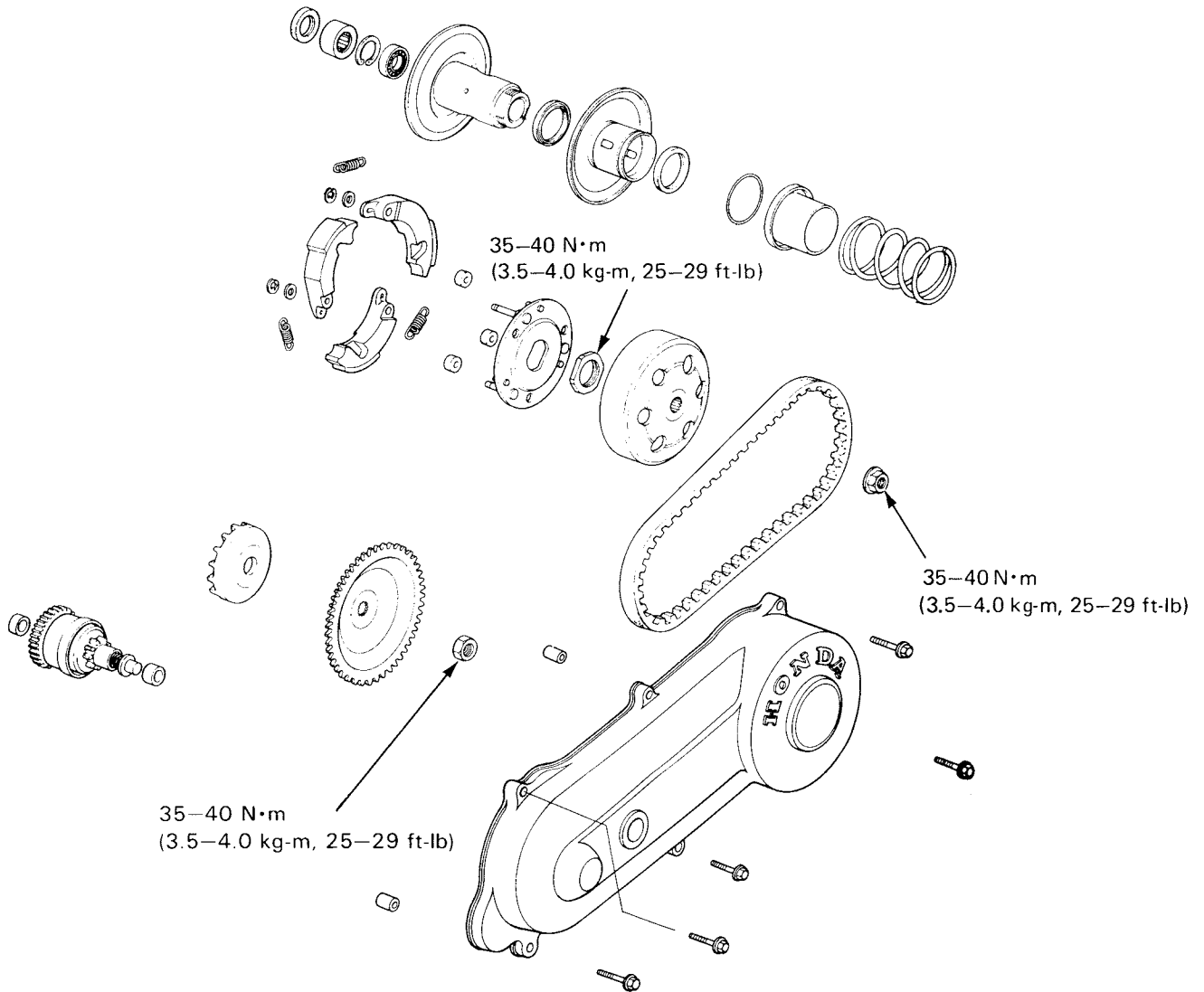
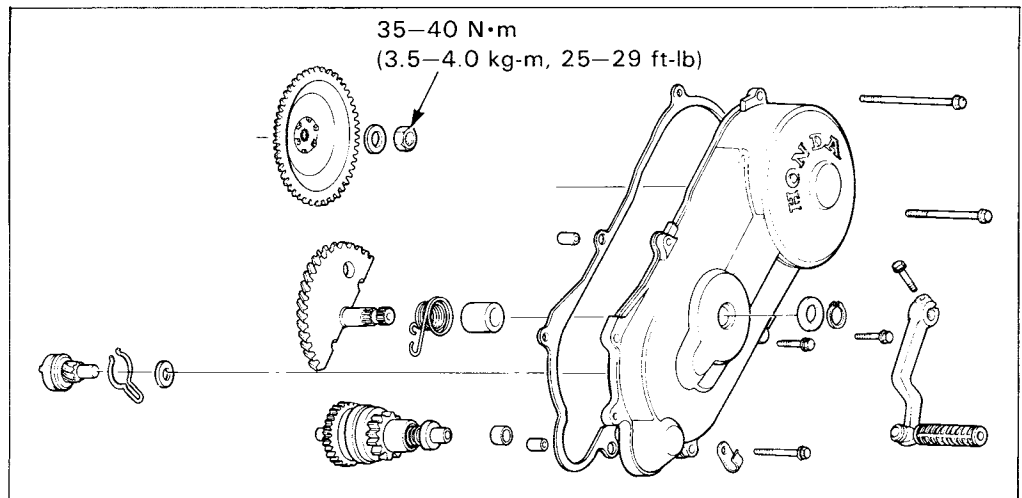


DRIVE AND DRIVEN PULLEYS/CLUTCH/KICK STARTER



After '85:



# 8. DRIVE AND DRIVEN PULLEYS/CLUTCH/KICK STARTER

|                      |      |
|----------------------|------|
| SERVICE INFORMATION  | 8-1  |
| TROUBLESHOOTING      | 8-1  |
| DRIVE PULLEY         | 8-2  |
| CLUTCH/DRIVEN PULLEY | 8-8  |
| STARTER PINION       | 8-14 |

## SERVICE INFORMATION

### GENERAL

- Keep oily substances off the drive belt and pulley.

### SPECIFICATIONS

| ITEM                           | STANDARD mm (in)              | SERVICE LIMIT mm (in) |
|--------------------------------|-------------------------------|-----------------------|
| Drive belt width               | 11.5 (0.45)                   | 10.5 (0.41)           |
| Clutch outer I.D.              | 97.0-97.2 (3.82-3.83)         | 97.5 (3.84)           |
| Clutch shoe thickness          | 3.5 (0.14)                    | 1.5 (0.06)            |
| Driven face spring free length | 73.4 (2.89)                   | 68 (2.7)              |
| Driven face O.D.               | 33.965-33.985 (1.3372-1.3380) | 33.940 (1.3362)       |
| Movable driven face I.D.       | 34.000-34.025 (1.3386-1.3396) | 34.060 (1.3409)       |

8

### TORQUE VALUES

|                  |                                       |
|------------------|---------------------------------------|
| Drive pulley nut | 30-35 N·m (3.0-3.5 kg-m, 22-25 ft-lb) |
| Clutch outer nut | 35-40 N·m (3.5-4.0 kg-m, 25-29 ft-lb) |
| Clutch lock nut  | 35-40 N·m (3.5-4.0 kg-m, 25-29 ft-lb) |

### TOOLS

#### Special

|                           |                                                                        |
|---------------------------|------------------------------------------------------------------------|
| Lock Nut Wrench, 39×41 mm | 07GMA-KS40100 or 07916-1870002 or commercially available 39 mm socket. |
| Clutch Spring Compressor  | 07960-KM10000 or 07960-KM1000A (U.S.A. only)                           |
| Bearing driver            | 07945-GC80000                                                          |

#### Common

|                      |               |
|----------------------|---------------|
| Universal Holder     | 07725-0030000 |
| Attachment, 24x26 mm | 07746-0010700 |

## TROUBLESHOOTING

#### Engine starts, but scooter won't move

1. Worn drive belt
2. Worn or damaged clutch lining
3. Broken clutch spring
4. Damaged driven pulley shaft splines

#### Poor performance at high speed or lack of power

1. Worn drive belt
2. Weak clutch spring
3. Worn weight rollers

#### Engine stalls or scooter starts suddenly

1. Broken clutch weight spring
2. Damaged clutch lining

#### Clutch noise or smell

1. Oil or grease on drive belt or pulley
2. Worn drive belt
3. Weak torque clutch spring

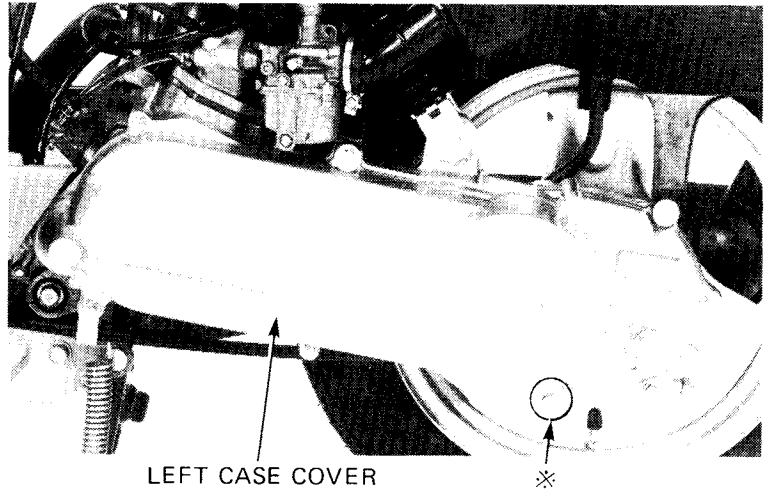
## DRIVE PULLEY

### LEFT CRANKCASE COVER REMOVAL

Remove both rear frame covers (page 5-2).  
Remove the left case cover bolts and left case cover.

**NOTE:**

- Never turn the starter motor with the left case cover removed.
- The lower rear bolt (\*) attaching the left case cover is also used to tighten the final gear case. When the final gear is not to be serviced, temporarily tighten the gear case with a 6 x 20 mm bolt and plain washer.



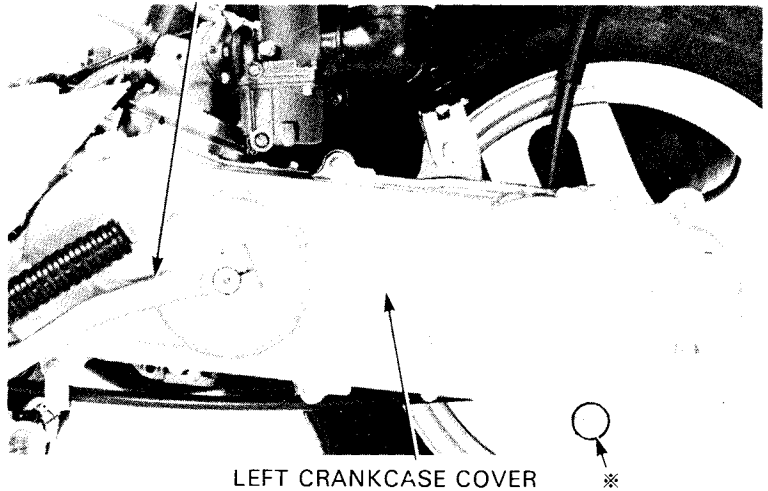
After '85:

Remove both rear frame covers (page 5-2).  
Remove the kick starter pedal.  
Remove the left crankcase cover attaching bolts and the cover.  
Remove the gasket and dowel pins.

**NOTE**

- Never turn the starter motor with the left crankcase cover removed.

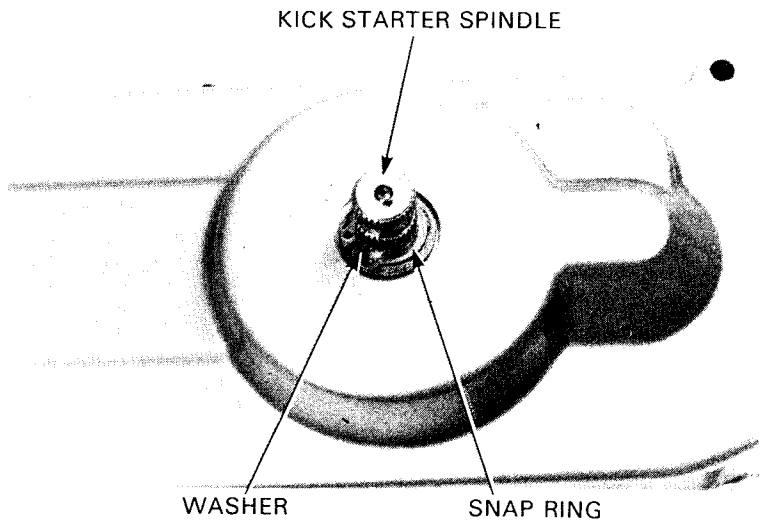
### KICK STARTER PEDAL



After '85:

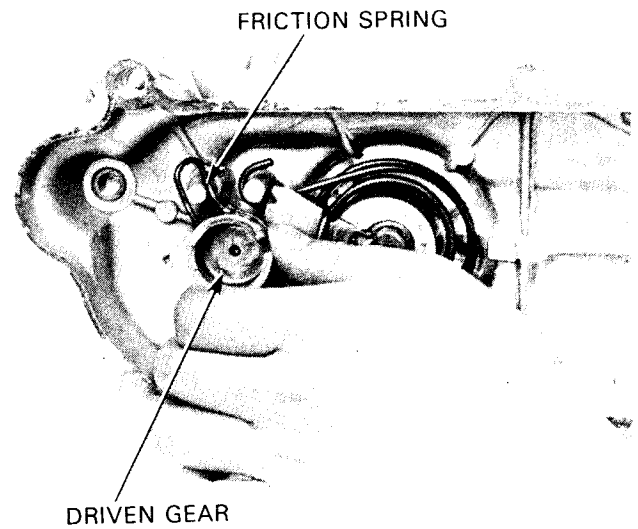
### KICK STARTER REMOVAL

Remove the snap ring and washer from the kickstarter spindle.

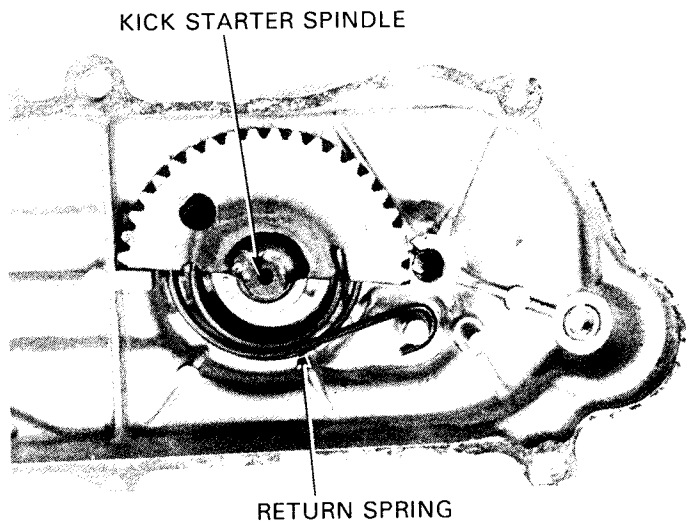


## DRIVE AND DRIVEN PULLEYS/CLUTCH/KICK STARTER

Temporarily install the kick starter pedal onto the kick starter spindle.  
Remove the starter driven gear and friction spring by turning the kick starter pedal.

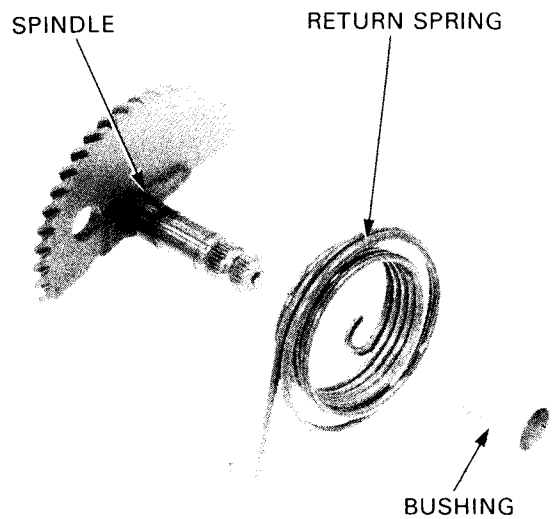


Remove the kick starter spindle and return spring from the left crankcase cover.  
Remove the spindle bushing.



### KICK STARTER INSPECTION

Check the kick starter spindle and bushing for wear or damage.  
Check the return spring for weak or damage.



## DRIVE AND DRIVEN PULLEYS/CLUTCH/KICK STARTER

---

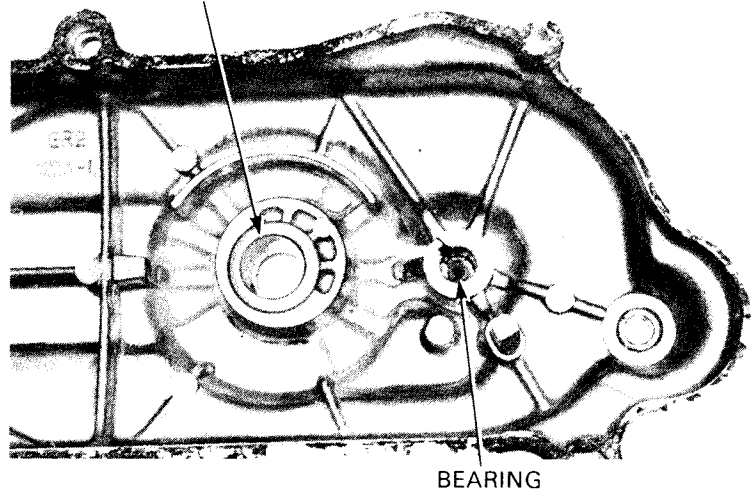
Check the kick starter driven gear and friction spring for wear or damage.

FRICITION SPRING



Check the kick starter spindle and driven gear bearings for wear or damage.

BEARING



BEARING

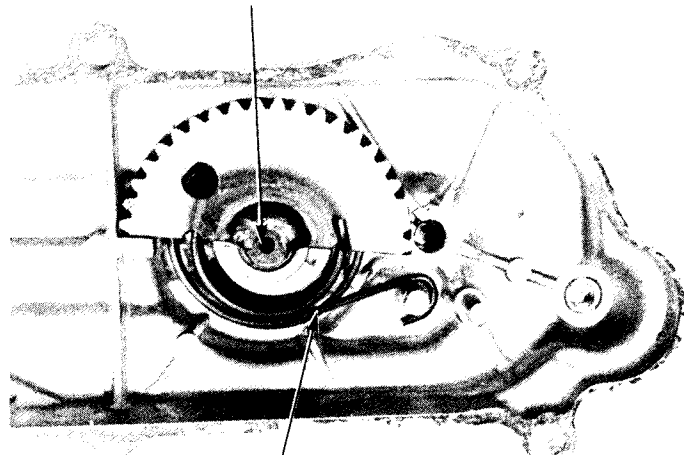
### KICK STARTER INSTALLATION

Install the kick starter bushing, spindle and return spring onto the left crankcase cover.

#### NOTE:

- Pry the inner end of the spring out of way, if difficulty is encountered in inserting the spindle through the spring.

KICK STARTER SPINDLE



RETURN SPRING