

HM230045

- 1. CAPSCREW
- 2. WASHER
- 3. RETAINER

- 4. ANCHOR PIN
- 5. TILT CYLINDER

Figure 1. Tilt Cylinder Removal/Installation

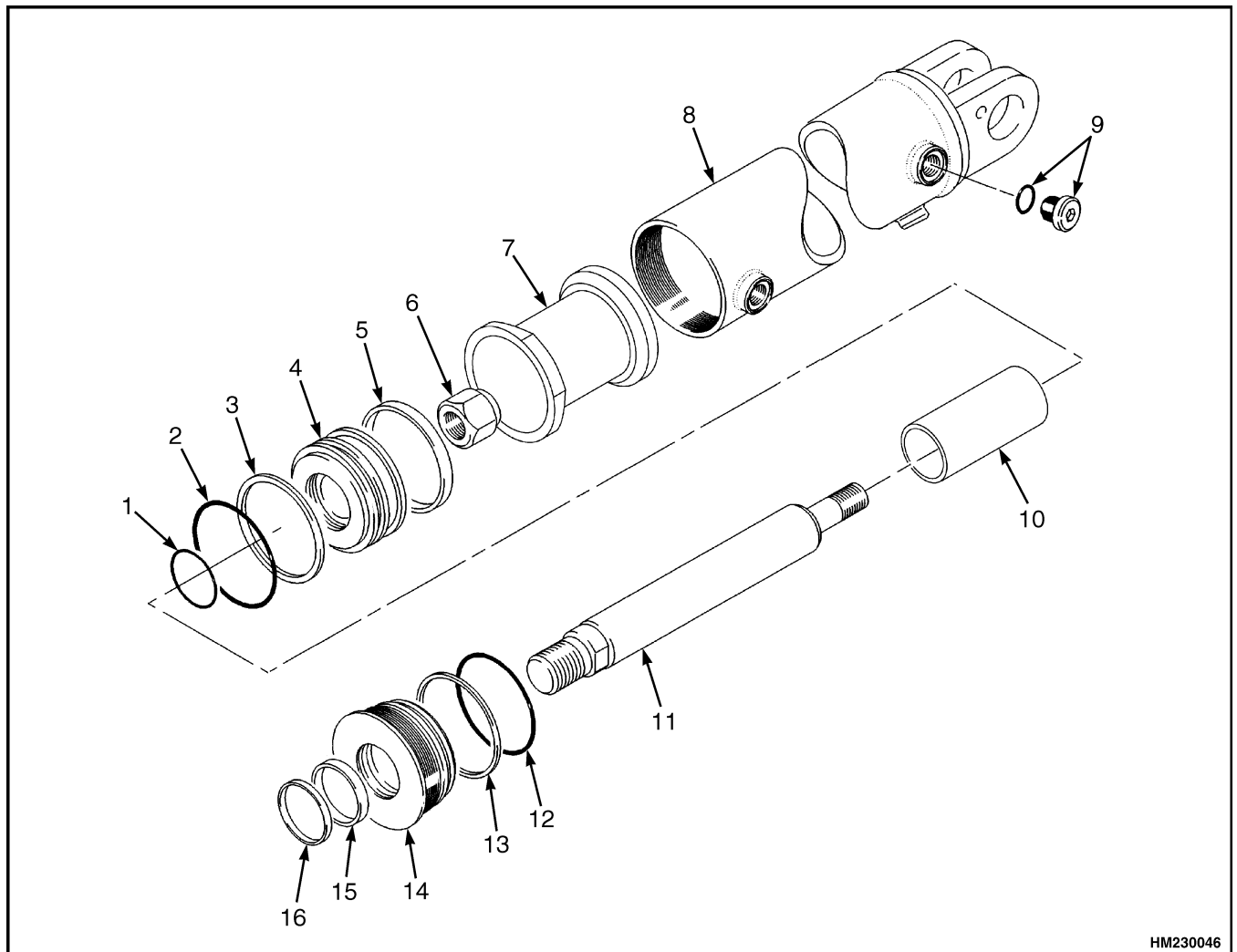
DISASSEMBLE

1. Put the tilt cylinder in a vise with soft jaws, placed in a horizontal position.
2. Disassemble and remove the end rod by removing the two bolts/nuts. See Figure 2.
3. Disassemble and remove the bearing from the piston rod by removing the 20 retaining bolts.

**CAUTION**

Be careful not to damage the finished surface of the piston rod when removing the piston rod from the cylinder shell in a horizontal position (parallel to the cylinder shell).

4. Disassemble piston rod assembly from the cylinder shell by pulling it out.



HM230046

- | | |
|--------------|-----------------|
| 1. O-RING | 9. FITTING |
| 2. O-RING | 10. SPACER |
| 3. SEAL RING | 11. ROD |
| 4. PISTON | 12. O-RING |
| 5. WEAR RING | 13. BACKUP RING |
| 6. NUT | 14. GLAND |
| 7. SPACER | 15. SEAL |
| 8. TUBE | 16. ROD WIPER |

Figure 2. Tilt Cylinder