

INSTALL

Move the fork and carriage so the top hook on the fork can engage the upper carriage bar. Raise the carriage to move the lower hook through the fork

removal notch. Slide the fork on the carriage so both upper and lower hooks engage the carriage bars. Engage the latch pin with a notch in the upper carriage bar.

Carriages Repair

STANDARD CARRIAGE, REMOVE

1. Put a one-quarter capacity load on the forks. The load must give the carriage stability so the carriage cannot fall when it is disconnected from the mast.
2. Lower the carriage and forks on blocks so the lift chains become loose.
3. Remove the load backrest extension.



WARNING

When disconnecting the lift chains, keep control of the ends. Use wire to temporarily connect the ends of the lift chains to the mast. This procedure will prevent the lift chains from falling from the sheaves and causing an injury or damage.

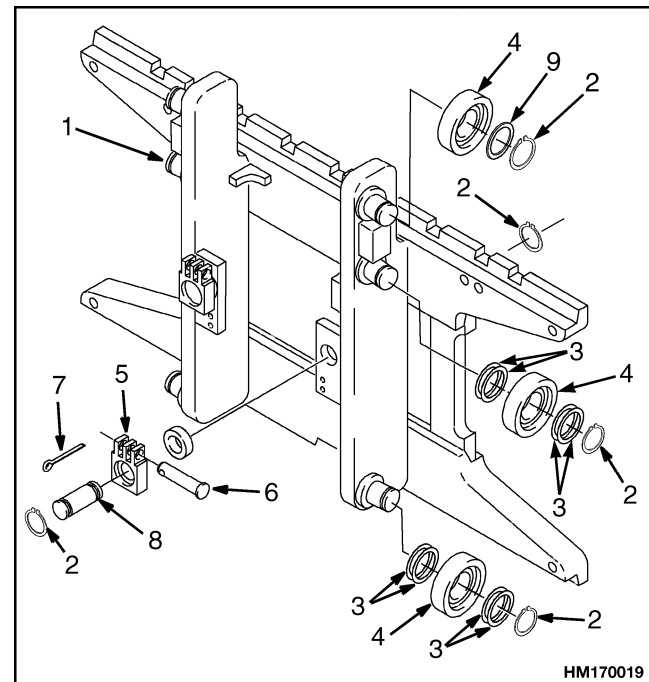
4. Remove the pin from each chain anchor at the carriage. See Figure 4. Disconnect the lift chains from the carriage. Use wire to connect the ends of the lift chains to a part of the mast. Make sure the chains can move freely when the inner mast weldment is raised.



WARNING

To help prevent possible injury, make sure the carriage is stable when the inner mast weldment is above the load rollers of the carriage.

5. Use the lift cylinders to raise the inner mast weldment. If the hydraulic system cannot be used, disconnect the lift cylinders from the inner or intermediate mast weldment. Connect a crane [the capacity of the crane must be at least 681 kg (1501 lb)] to the top of the inner mast weldment. Carefully raise the inner mast weldment until it is above the load rollers of the carriage.



NOTE: TWO-STAGE LFL CARRIAGE SHOWN.

- | | |
|-----------------|---------------|
| 1. CARRIAGE | 6. CHAIN PIN |
| 2. SNAP RING | 7. COTTER PIN |
| 3. SHIM | 8. ANCHOR PIN |
| 4. LOAD ROLLER | 9. SPACER |
| 5. CHAIN ANCHOR | |

Figure 4. Standard Carriage

6. Move the lift truck away from the carriage. Completely lower the inner mast weldment so it cannot move.
7. Connect a lifting device to the carriage. Remove the load from the forks with another lift truck. Lower the carriage to the floor so the load rollers are facing up.
8. If the forks are removed, use a lifting device to put the carriage on the floor so the load rollers are up.

HANG-ON SIDESHIFT CARRIAGE, REMOVE

1. Lower the carriage completely. Remove the forks and the load backrest extension.
2. Connect a crane [the capacity of the crane must be at least 681 kg (1501 lb)] to the lifting eye on the sideshift carriage. See Figure 5.
3. Remove the two upper capscrews from the lower apron. Slowly loosen the two bottom capscrews, but do not remove them. The slotted holes will allow the lower apron to move down so the sideshift carriage can be removed.
4. Carefully lift the sideshift carriage from the standard carriage. The sideshift cylinder support

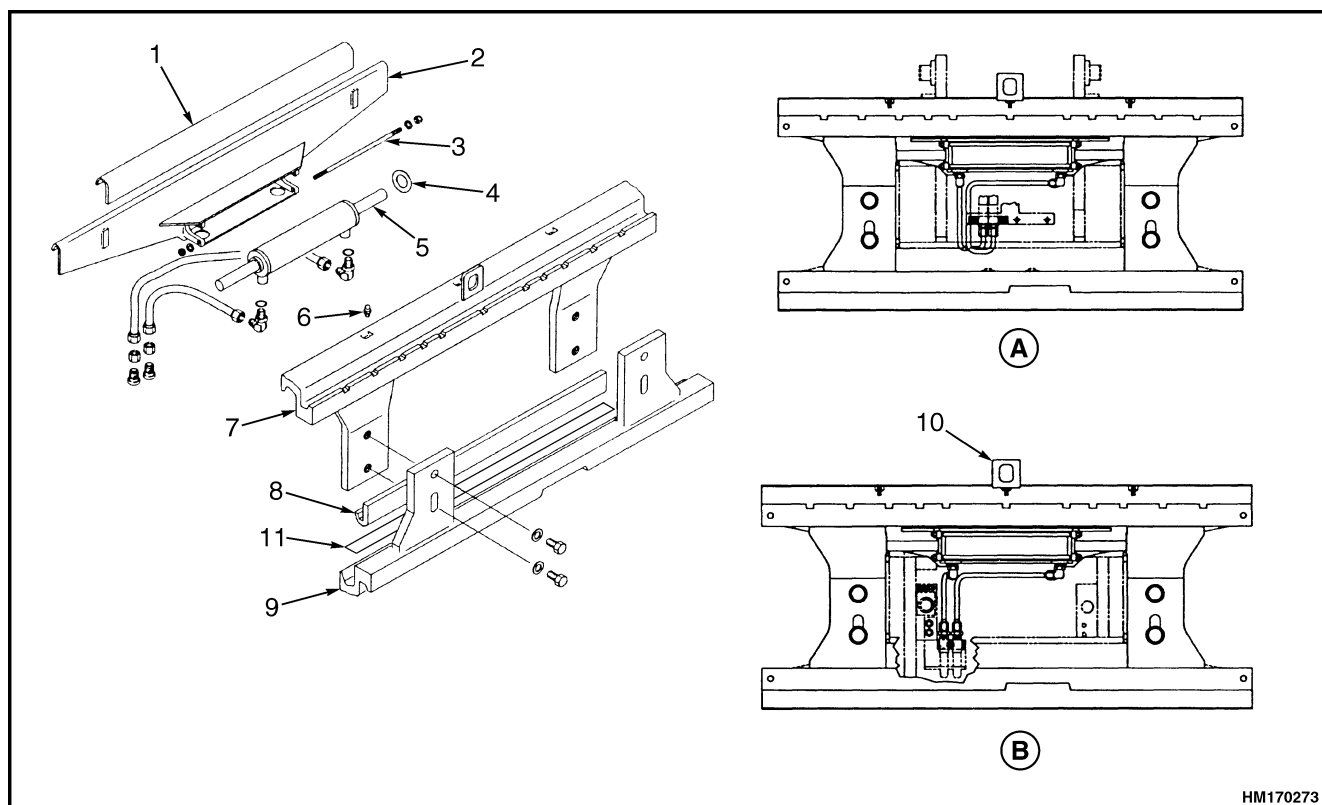
bracket and cylinder will stay on the standard carriage. Remove the bearings.



WARNING

Hydraulic oil is hot after system operation and can cause burns. Do not disconnect any hydraulic lines of the system until the oil for the system is cool and the pressure is relieved.

5. Disconnect the hydraulic lines at the sideshift cylinder. Put caps on the open hydraulic lines. Remove the cylinder support bracket from the standard carriage. If necessary, remove the threaded rods and shims in order to remove the sideshift cylinder.



A. HYDRAULIC CONNECTIONS - TWO-STAGE, FULL FREE-LIFT AND THREE-STAGE, FULL FREE-LIFT

B. HYDRAULIC CONNECTIONS - TWO-STAGE, LIMITED FREE-LIFT

1. TOP BEARING
2. CYLINDER SUPPORT BRACKET
3. THREADED ROD
4. SHIM
5. SIDESHIFT CYLINDER
6. GREASE FITTING

7. UPPER APRON
8. BOTTOM BEARING
9. LOWER APRON
10. LIFTING EYE
11. SHIM STRIP

Figure 5. Hang-On Sideshift Carriage