

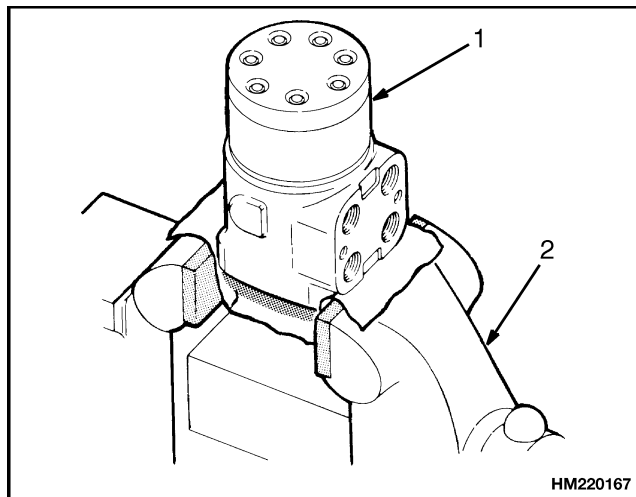
Steering Control Unit

Disassemble

Disassemble the steering control unit as follows:

STEP 1.

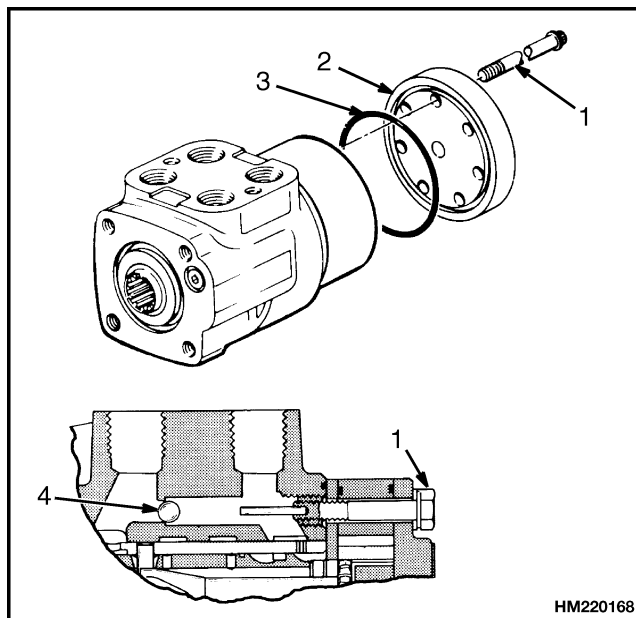
Put the control unit in a vise with soft jaws. Make an identification mark on the length of the control unit. When installed, remove the manifold block.



1. STEERING CONTROL UNIT
2. VISE

STEP 2.

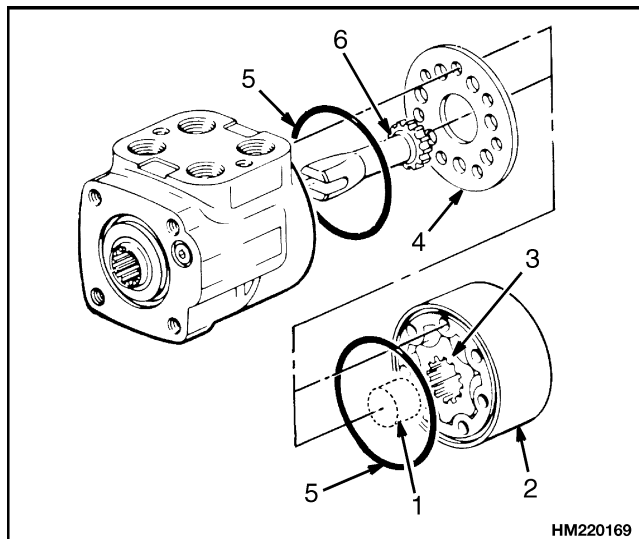
Remove the cover on the bottom of the steering control unit.



1. CAPSCREW
2. COVER
3. O-RING
4. CHECK BALL

STEP 3.

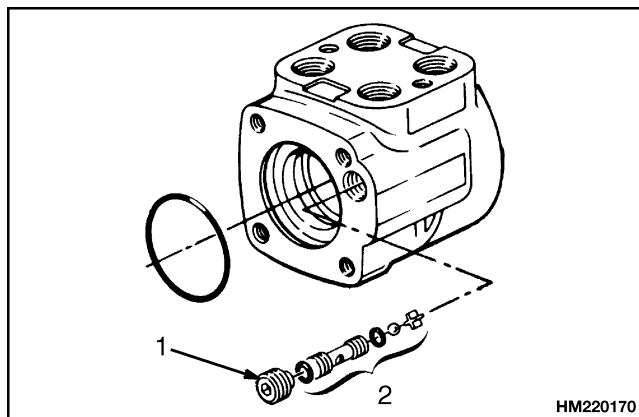
Remove the spacer (if used), the stator, rotor, and port plate. Put a mark on the stator so that the same side will be toward the body of the control unit at assembly. Remove the O-rings. Remove the center shaft.



1. SPACER
2. STATOR
3. ROTOR
4. PORT PLATE
5. O-RING
6. CENTER SHAFT

STEP 4.

Remove the screw for the check valve assembly. Remove the parts for the check valve. For some units, the check ball is in the opposite end of the control unit.



1. SCREW
2. CHECK VALVE ASSEMBLY