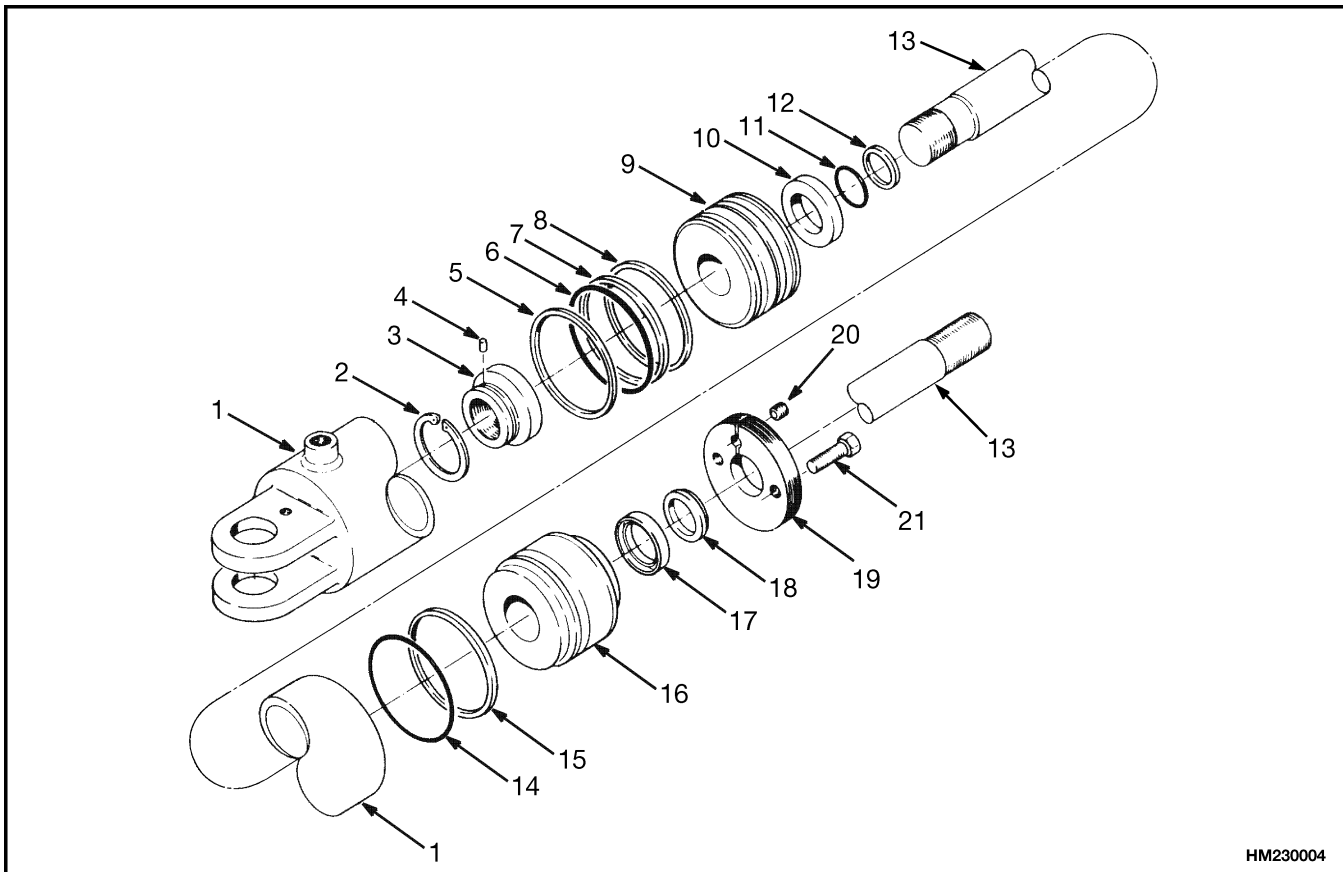


Tilt Cylinders for H700-800A and Early Model H700-920B

NOTE: Always use new seals and O-rings. Make sure all parts are clean. Lubricate all parts with clean hydraulic oil.

1. Install the thrust plate on the rod. Install the backup ring and O-ring on the rod. Install the piston on the rod. Install the piston rings and seals on the piston. See Figure 5.
2. Install the lock nut on the rod. Tighten the lock nut until the thrust plate is tight against the rod. Install the pin in the lock nut and rod if necessary, drill a hole in the rod for the pin. Install the snap ring to hold the pin in position.
3. Install the piston and rod assembly in the shell. Install the seals on the retainer. Install the retainer in the shell.
4. Install the lock ring in the shell, but do not tighten it. Install the capscrews in the lock ring. Turn the lock ring until it is even with the end of the shell. Install the pipe plug in the lock ring and tighten the plug to 34 to 48 N•m (25 to 35 lbf ft). Tighten the capscrews in the lock ring to 14 to 20 N•m (10 to 15 lbf ft).
5. Install the rod end on the rod. Tighten the capscrews on the rod end to 610 N•m (450 lbf ft).



HM230004

- | | | |
|-------------------|------------------|-------------------|
| 1. CYLINDER SHELL | 8. PISTON RING | 15. BACKUP RING |
| 2. SNAP RING | 9. PISTON | 16. RETAINER |
| 3. LOCK NUT | 10. THRUST PLATE | 17. SEAL RING |
| 4. DOWEL | 11. O-RING | 18. WIPER RING |
| 5. PISTON RING | 12. BACKUP RING | 19. RETAINER RING |
| 6. O-RING | 13. PISTON ROD | 20. PLUG |
| 7. SEAL RING | 14. O-RING | 21. CAPSCREW |

Figure 5. Tilt Cylinders for H700-800A, Early Model H700-920B

INSTALL

1. Use a lifting device to move large tilt cylinders. Put the cylinder in the lift truck. Install the anchor pin in the frame. Install the retainer pin or cotter pin.
2. Install the anchor pin at the mast mount. Install the retainer pin or cotter pin for the anchor pin. Tighten the capscrews for the retainer pins.
3. Connect the hydraulic lines to the tilt cylinder.
4. Operate the tilt cylinders. Check for correct operation and leakage. Adjust the tilt cylinders as described in Tilt Cylinder Leak Check and

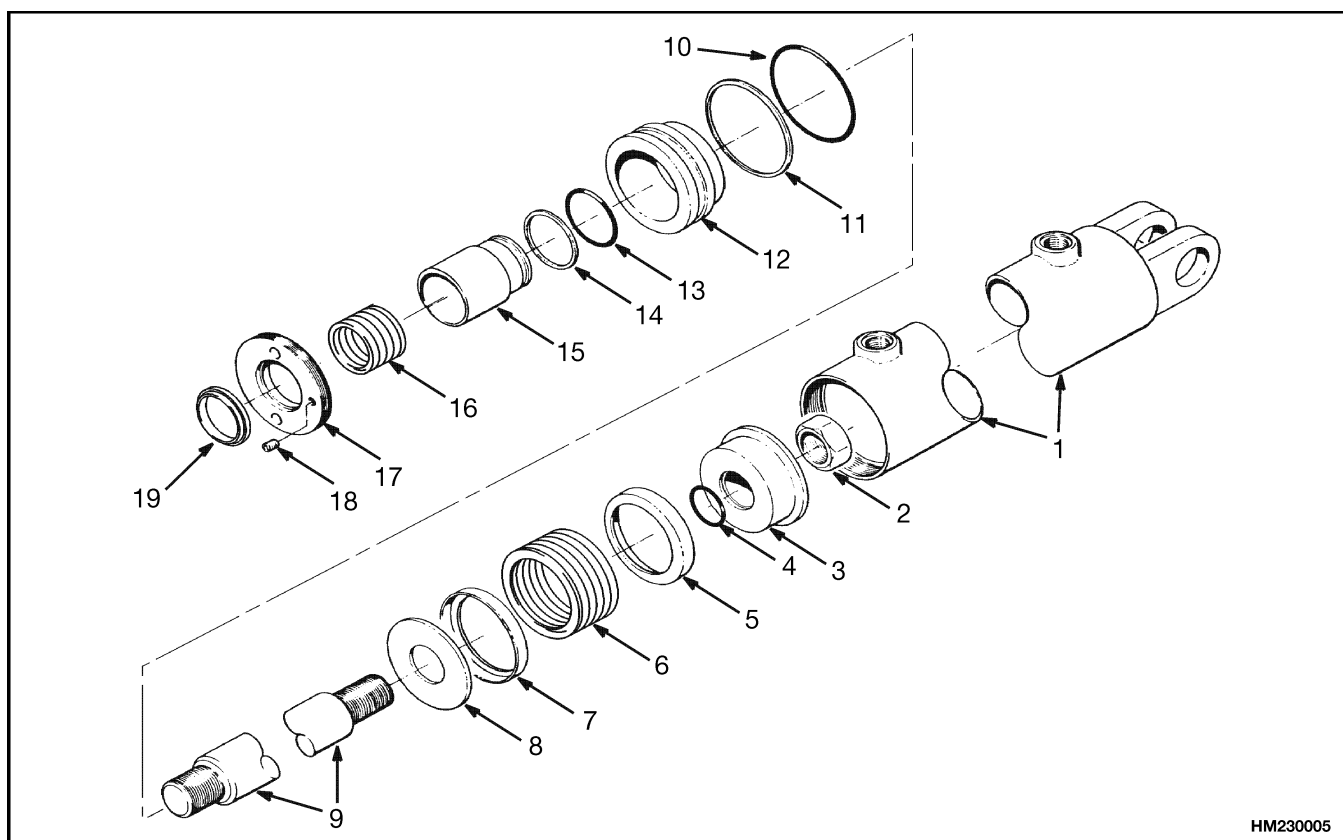
Tilt Cylinder Stroke and Mast Tilt Angle Adjustment.

Tilt Cylinders Using Chevron Packing

NOTE: Always use new seals and O-rings. Make sure all parts are clean. Lubricate all parts with clean hydraulic oil.

NOTE: The following procedure is for the H360-650C (early model). See Figure 6.

NOTE: After assembly is complete, install the rod end on the cylinder rod. Tighten the capscrew on the rod end as specified in **Mast** section for your specific lift truck.



- | | | |
|-------------------|-----------------------|-------------------|
| 1. CYLINDER SHELL | 8. PISTON HALF (FLAT) | 15. BUSHING |
| 2. NUT | 9. PISTON ROD | 16. PACKING |
| 3. PISTON HEAD | 10. O-RING | 17. RETAINER RING |
| 4. O-RING | 11. BACKUP RING | 18. SETSCREW |
| 5. NYLON RING | 12. RETAINER | 19. WIPER RING |
| 6. PACKING | 13. O-RING | |
| 7. NYLON RING | 14. BACKUP RING | |

Figure 6. Tilt Cylinders With Chevron Packing (Early Model H360-650C)