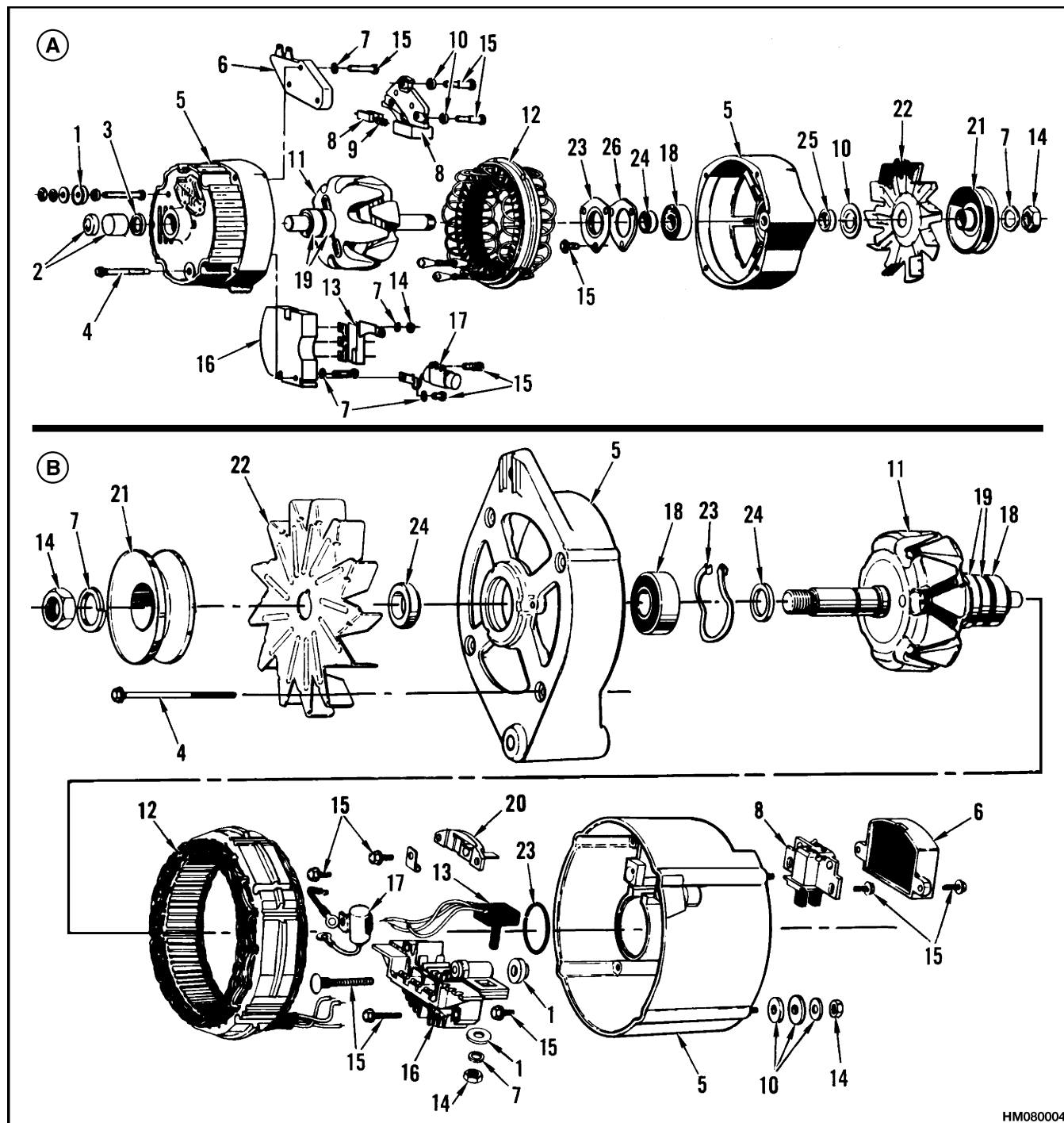


2. Connect all wires and the connector according to the labels made during removal. Also see the schematic diagram for your alternator in Figure 2. Make sure all wires are connected correctly and all fasteners are tight. See Figure 3.
3. Check the indicator light or the ammeter to check the operation of the alternator. The indicator light for Type A alternators will only be ON if the battery is discharged.



HM080004

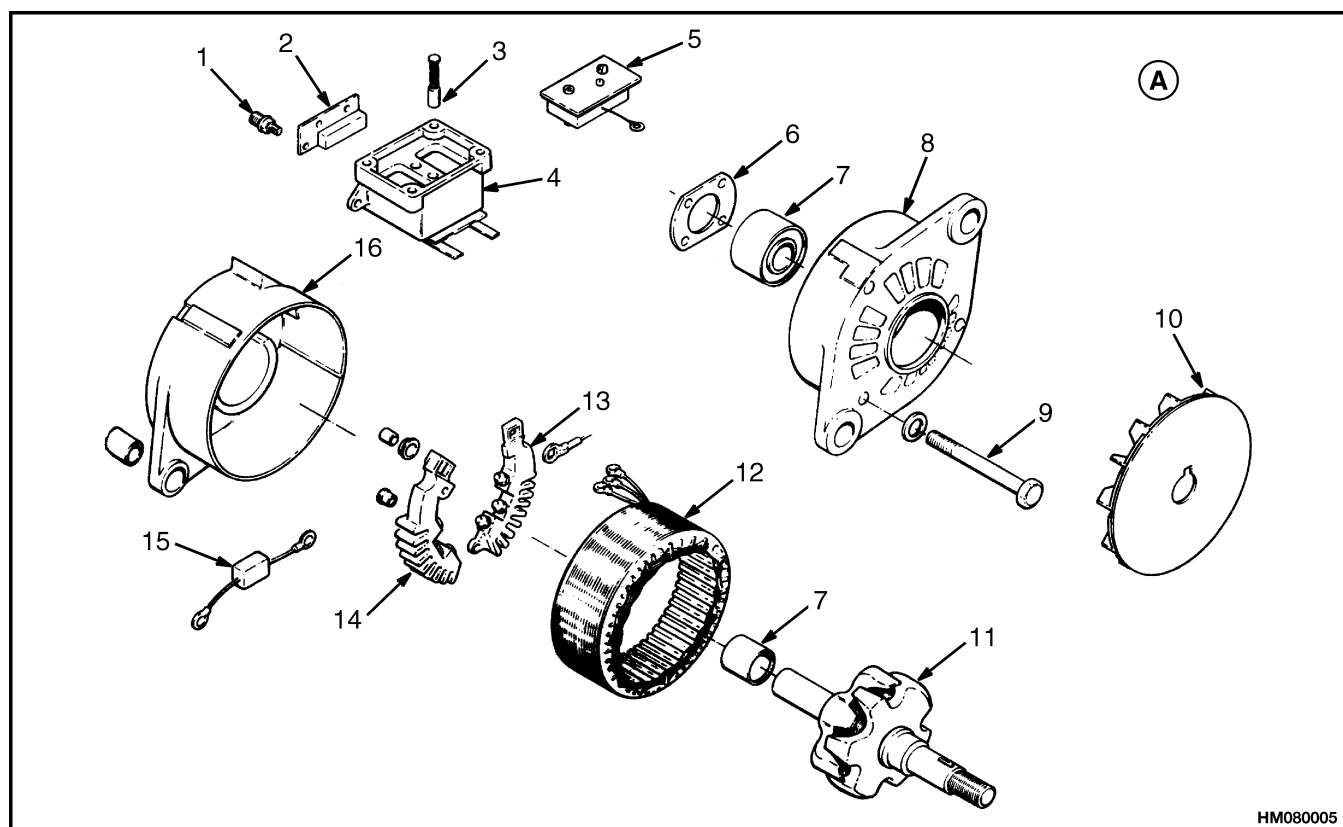
Figure 4. Type A Alternators, Exploded Views

*Legend for Figure 4***A. DELCO**

1. INSULATOR
2. PLUG AND BEARING
3. BEARING SEAL
4. BOLT
5. HOUSING
6. VOLTAGE REGULATOR
7. LOCKWASHER
8. BRUSH AND HOLDER
9. BRUSH SPRING
10. WASHER
11. ROTOR
12. STATOR
13. DIODES

B. MOTOROLA

14. NUT
15. SCREW
16. DIODE BRIDGE
17. CAPACITOR
18. BEARING
19. SLIP RINGS
20. TERMINAL
21. PULLEY
22. FAN
23. RETAINER
24. SPACER
25. SHIELD
26. GASKET



HM080005

A. LEECE-NEVILLE

1. TERMINAL
2. DIODE SET
3. BRUSH AND SPRING
4. BRUSH HOLDER
5. VOLTAGE REGULATOR
6. BEARING RETAINER
7. BEARING
8. FRONT HOUSING

9. BOLT
10. FAN
11. ROTOR
12. STATOR
13. NEGATIVE DIODE BRIDGE
14. POSITIVE DIODE BRIDGE
15. FILTER CAPACITOR
16. REAR HOUSING

Figure 5. Type A Alternator, Exploded View