

3. Adjust the strip bearings. Insert shims between the strip bearing and the spacer bar. Adjust the clearance until there is less than 0.8 mm (0.030 in) at the tightest fit. See FIGURE 11.

Guide Shoe Adjustment (See FIGURE 12.)

4. The masts having full free-lift have guide shoes. The guide shoes make sure the free-lift cylinder rod is parallel to the masts during the full travel. Adjust the guide with shims so that the cylinder is parallel to the masts when the rod is retracted. Then adjust the clearance for 0.8 mm (0.030 in) at the tightest fit in the travel of the guide shoes.

5. Cushion adjustment (standard masts with intermediate free-lift). See FIGURE 13. The adjustable cushion stops the inner channel when the lifting cylinder is fully retracted. Add or remove shims to make the top of the inner channel even with the top of the outer channel within 1.5 mm (0.060 in).

6. Latch Adjustment (full free-lift masts). See FIGURE 13. The correct operation of the latches makes necessary the correct adjustment of the inner channel load rollers and the cushion. Adjust the inner channel cushion with shims so that the latches will release smoothly and will operate as shown in FIGURE 13.

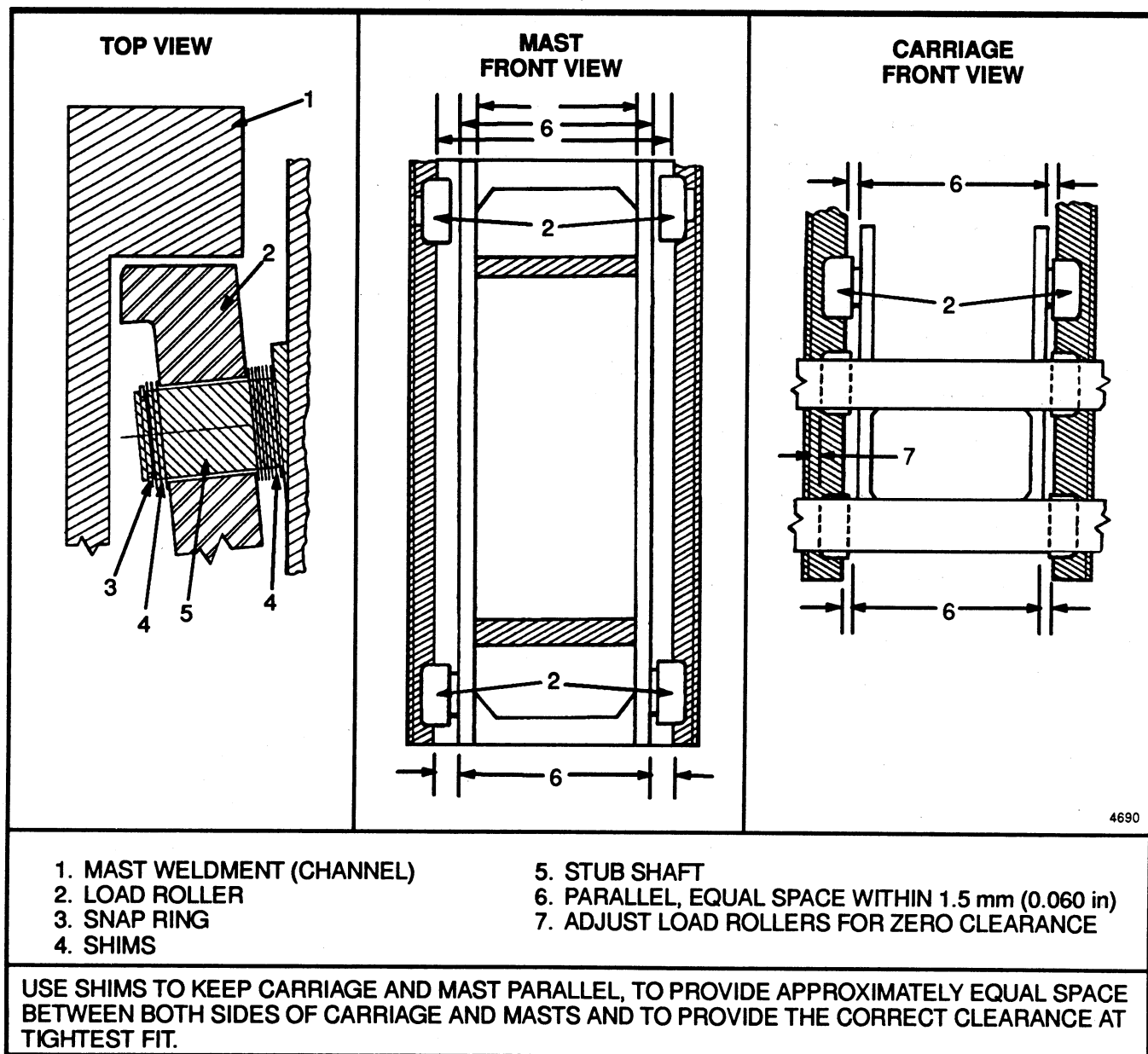


FIGURE 10. MAST AND CARRIAGE ADJUSTMENTS

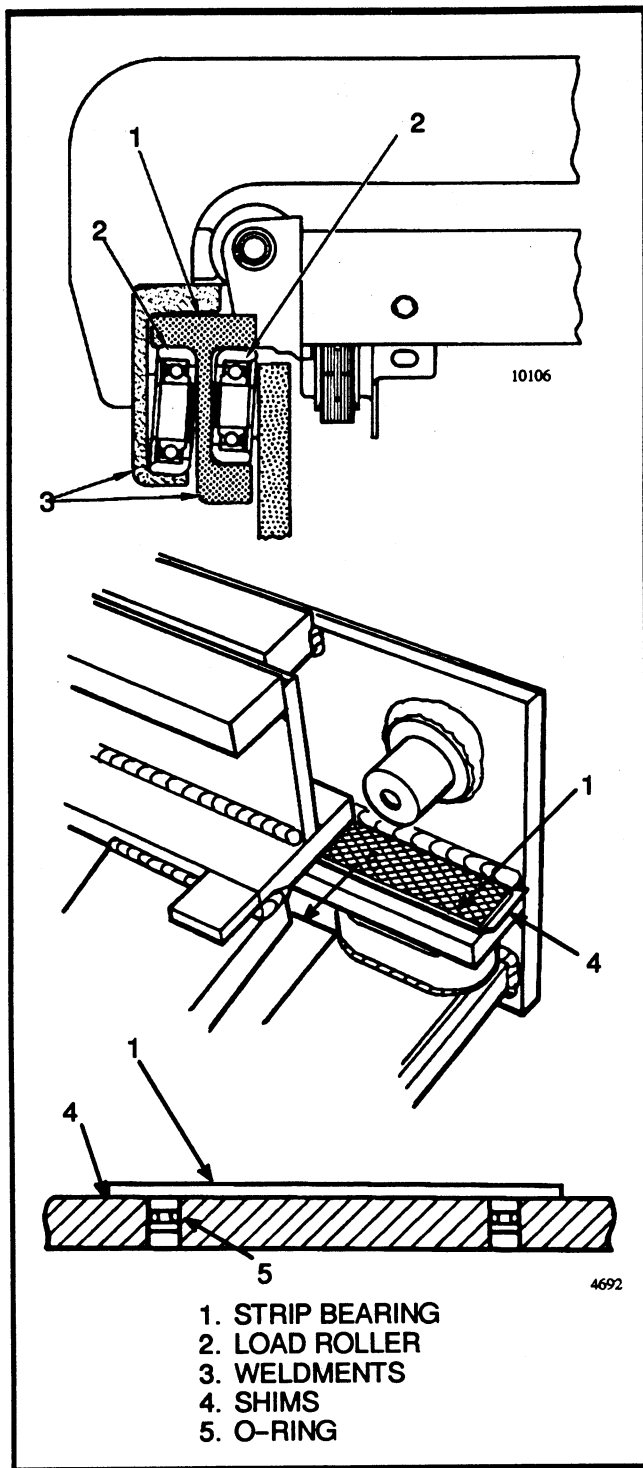


FIGURE 11. ADJUSTMENT OF THE STRIP BEARING

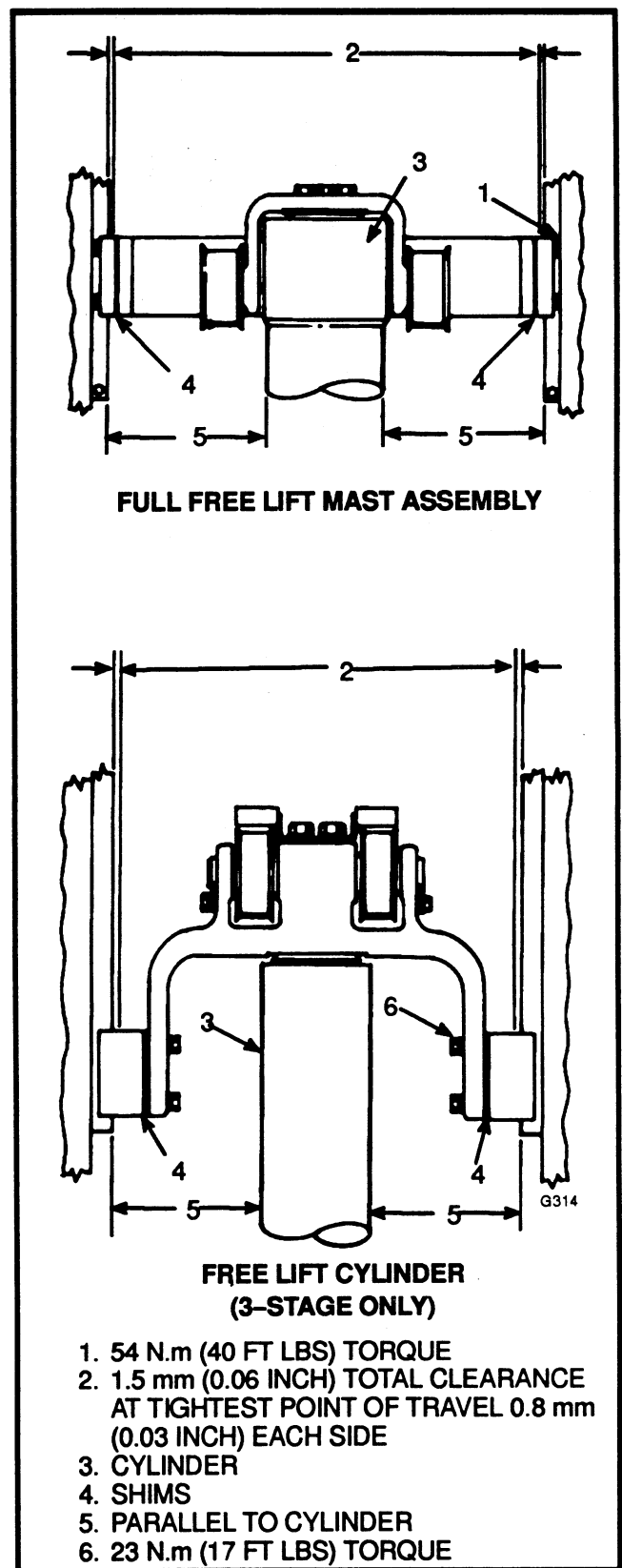


FIGURE 12. GUIDE SHOE ADJUSTMENT