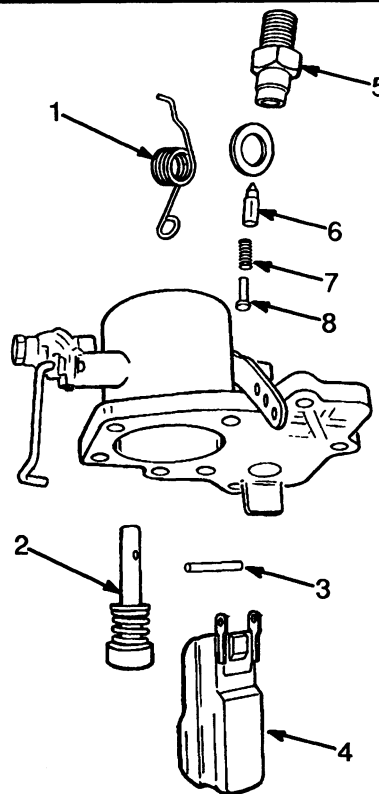


STEP 1. Install the jets into the float bowl housing:

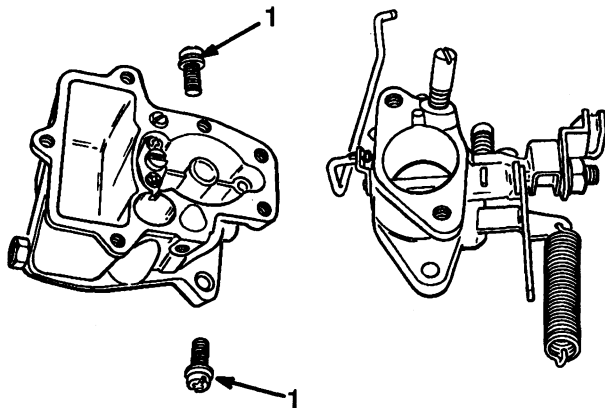
1. Check Valve
2. Power Valve
3. Main Jet
4. Fuel Jet For Slow Speed
5. Small Air Jet For Slow Speed
6. Air Jet For Main Nozzle
7. Plug



STEP 3. Install the float valve seat (4) and install the needle valve (5), spring (6), and spring seat (7).

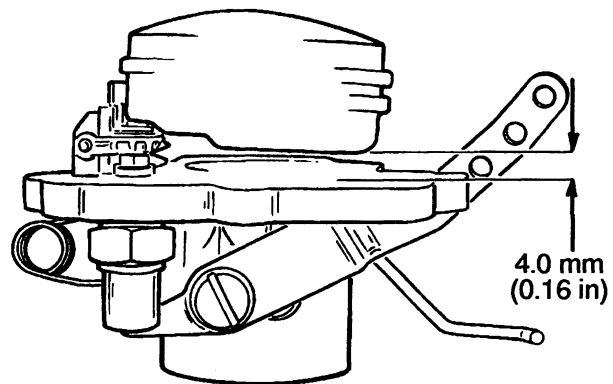
Install the accelerator pump (2) into the air horn. Install the spring (1)

Install the float (4). Install the pin (3) that holds the float.



STEP 2. Install the float bowl housing on the throttle body assembly and install the screws (1).

Install the idle mixture screw and spring in the throttle body.



STEP 4. Check the float level as shown. Adjust the valve seat against the needle valve for the correct float level.

FIGURE 6. ASSEMBLY OF THE CARBURETOR (1 of 2)

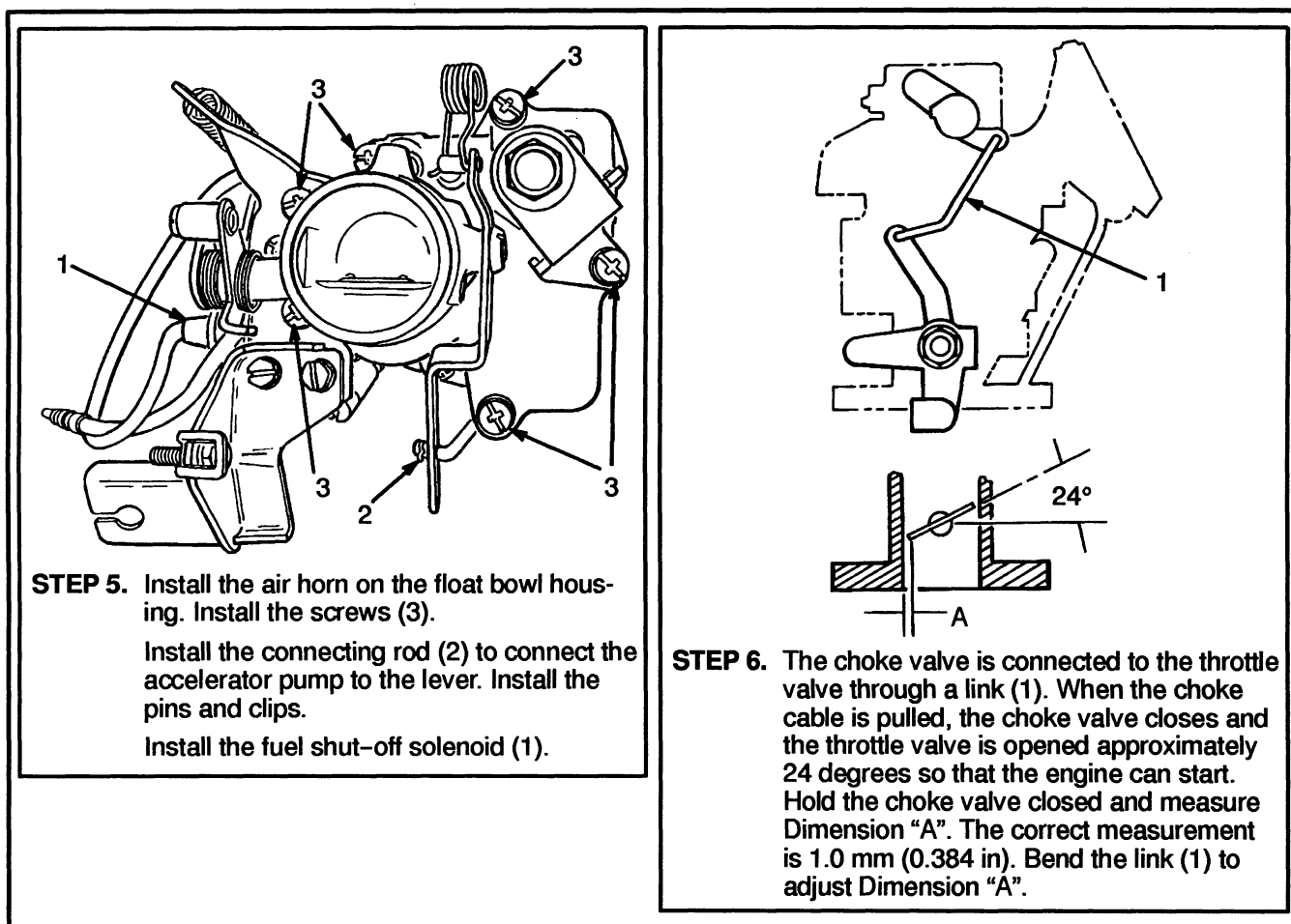


FIGURE 6. ASSEMBLY OF THE CARBURETOR (2 of 2)

Installation

NOTE: The vacuum and engine coolant hoses installed on the carburetor and governor are made of special high-temperature material. If any of the hoses are replaced, make sure the correct hoses are installed.

1. Install the governor and gasket on the engine manifold studs. Install the carburetor and gasket on the governor. Install and tighten the nuts on the studs.
2. Connect the vacuum hoses to the carburetor and governor.
3. Connect the engine coolant hoses to the and governor.
4. Connect the wire for the solenoid shut-off valve.
5. Connect the throttle cable to the carburetor.
6. Install the air inlet adapter on the carburetor. Connect the inlet adapter to the air filter hose.

CHECKS AND ADJUSTMENTS

Carburetor, Idle Speed And Mixture Adjustment (See FIGURE 7.)

1. The engine must be at the normal operating temperature. Stop the engine. Apply the parking brake. Check that the choke plate is fully open. Connect a tachometer to the engine.
2. Put the transmission in NEUTRAL. Start the engine. See FIGURE 7. Turn the idle speed screw (1) until the idle speed is 700 to 750 rpm. Use an exhaust gas analyzer to check that the CO reading is 0.3 to 1.0% at idle.
3. Turn the idle mixture screw (2) until the tachometer indicates the highest idle speed. Repeat step 2 and step 3 until the idle speed is 700 to 750 rpm.

CAUTION

The mixture screw will be damaged if tightened against its seat.