

# INTERIOR AND EXTERIOR

## Exterior (Cont'd)

### ⑨ Side guard molding

The diagram illustrates the installation and removal of side guard molding. At the top, a car silhouette shows the location of the molding. Below, a cross-section shows the molding being attached to a body panel. A legend indicates that hatched areas represent double-faced adhesive tape. The molding is secured with clips labeled 'A' and 'B'. A detailed view shows a 'Grommet' and 'Clip' being used to secure the molding to the body panel, with 'Double-faced adhesive tape' also shown. A 'Heat gun' is shown being used to heat the molding. Arrows indicate the removal process: raising the end of the molding and cutting off the bonding agent.

- Remove it only if it is necessary to do so.
- Removal:
  1. Heat molding portion to 30 to 40°C (86 to 104°F) with a heat gun.

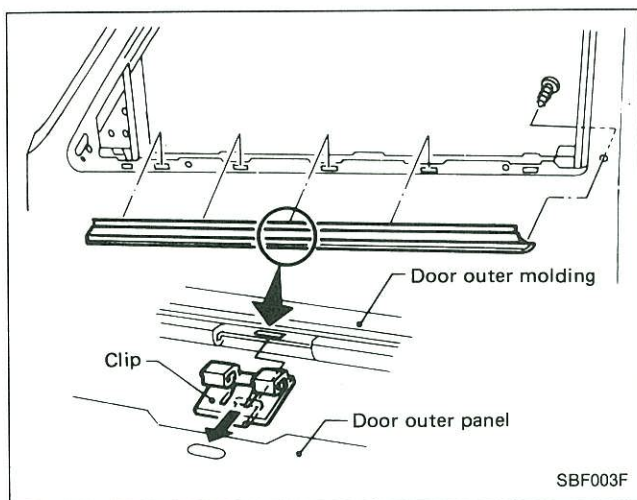
Heat gun

2. Raise end of molding and, while cutting off bonding agent, detach molding.

- Installation
  1. Remove all traces of bonding agent from body panel. Then clean contact face of body.
  2. Heat body panel and molding to 30 to 40°C (86 to 104°F) with a heat gun. Then install molding.

SBF134F

### ⑩ Door waist outside molding



### ⑪ Rear window upper molding and side molding

Basically the same as windshield upper molding. Refer to "⑤ Windshield upper molding and side molding".

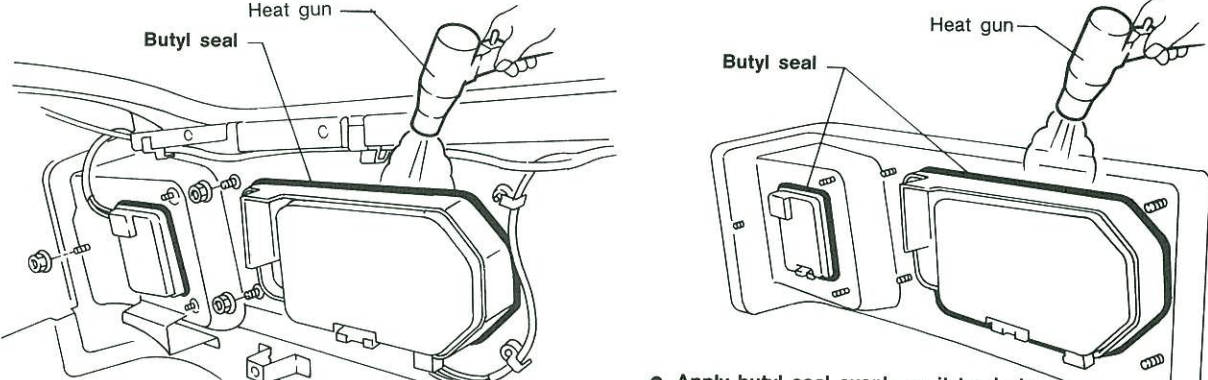
### ⑫ Rear window lower molding

Mounted with screws.

# INTERIOR AND EXTERIOR

## Exterior (Cont'd)

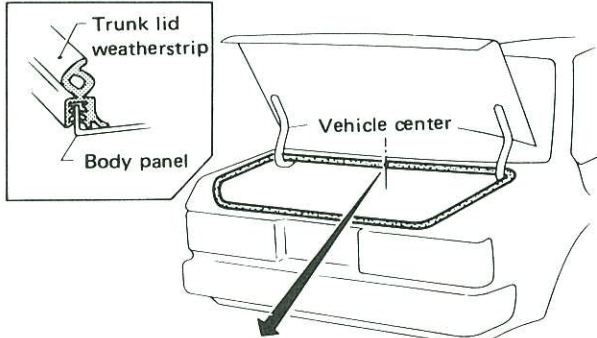
### 13 Rear combination lamp



- Warm up lamp assembly area to a temperature a little below 60°C (140°F).
- Apply butyl seal evenly as it tends to become thin in the corners.
- Warm up lamp assembly area to a temperature a little below 60°C (140°F).

SBF135F

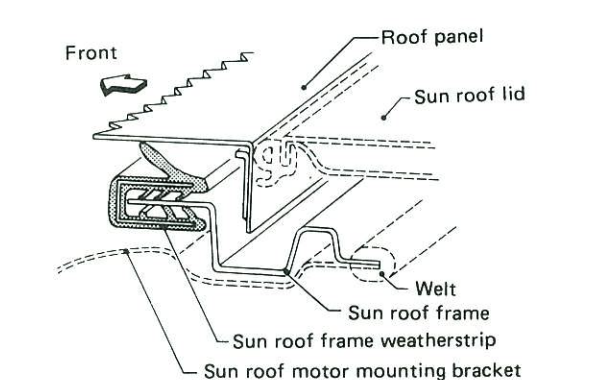
### 14 Trunk lid weatherstrip



There is a marking at vehicle center.

SBF971C

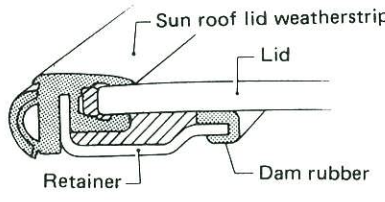
### 16 Sun roof frame weatherstrip



SBF443C

### 15 Sun roof lid weatherstrip

Sun roof lid weatherstrip is bonded to lid.



Retainer

Dam rubber

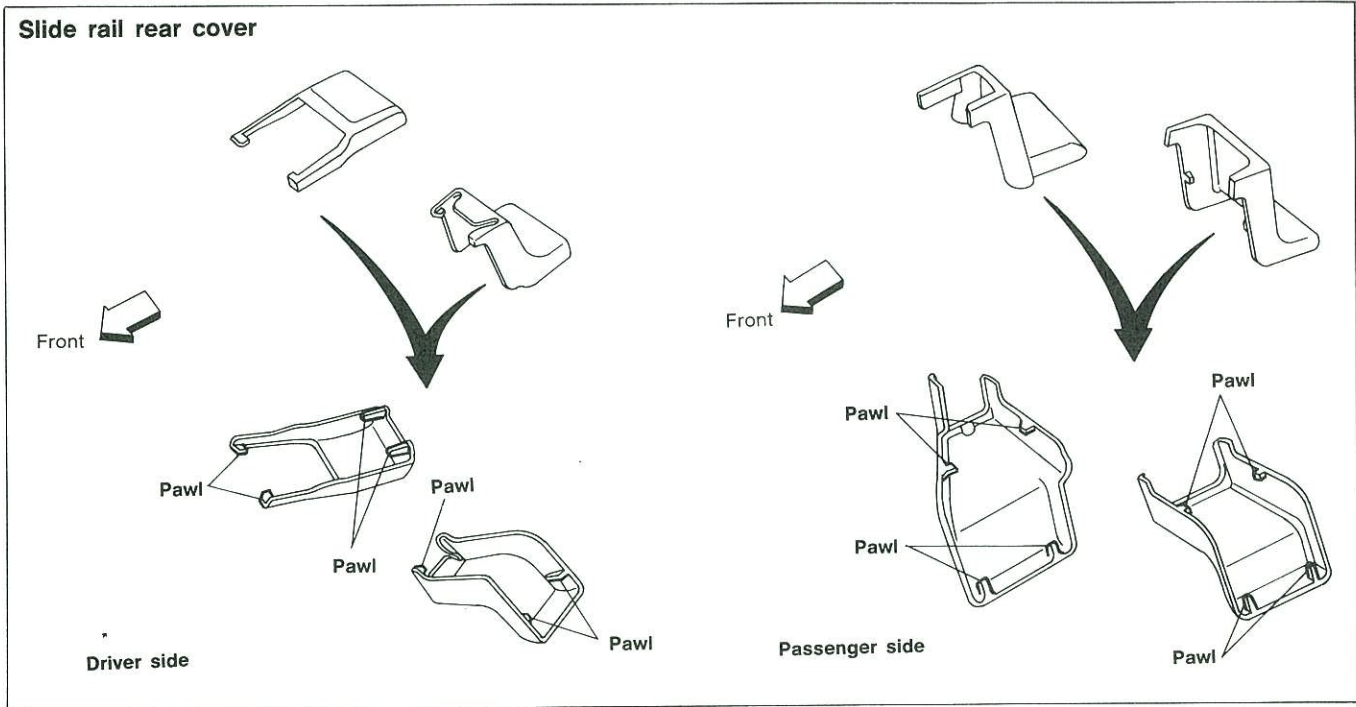
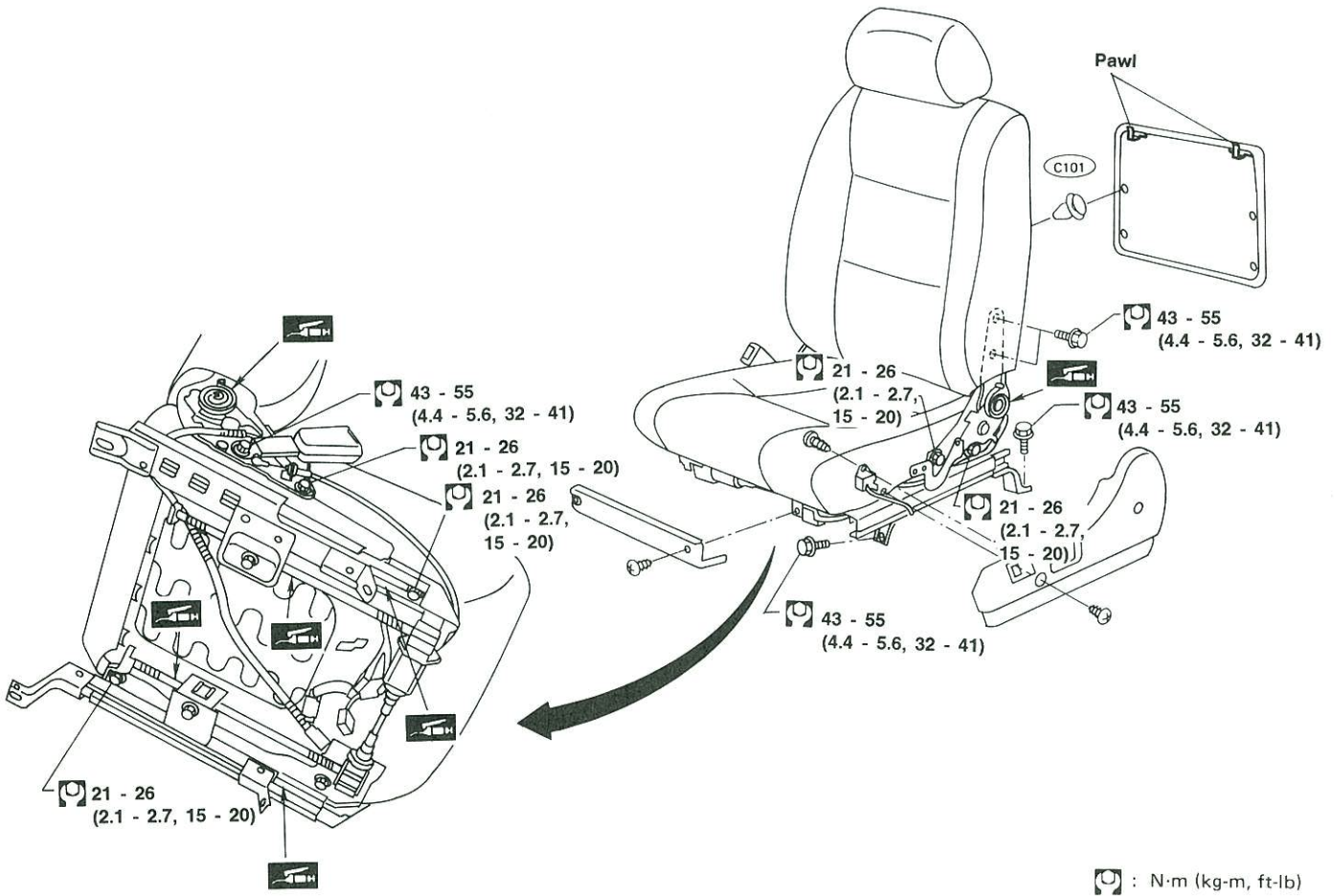
Sealant portion

SBF994F

# SEAT

- When removing or installing the seat trim, carefully handle it to keep dirt out and avoid damage.

## Front Seat



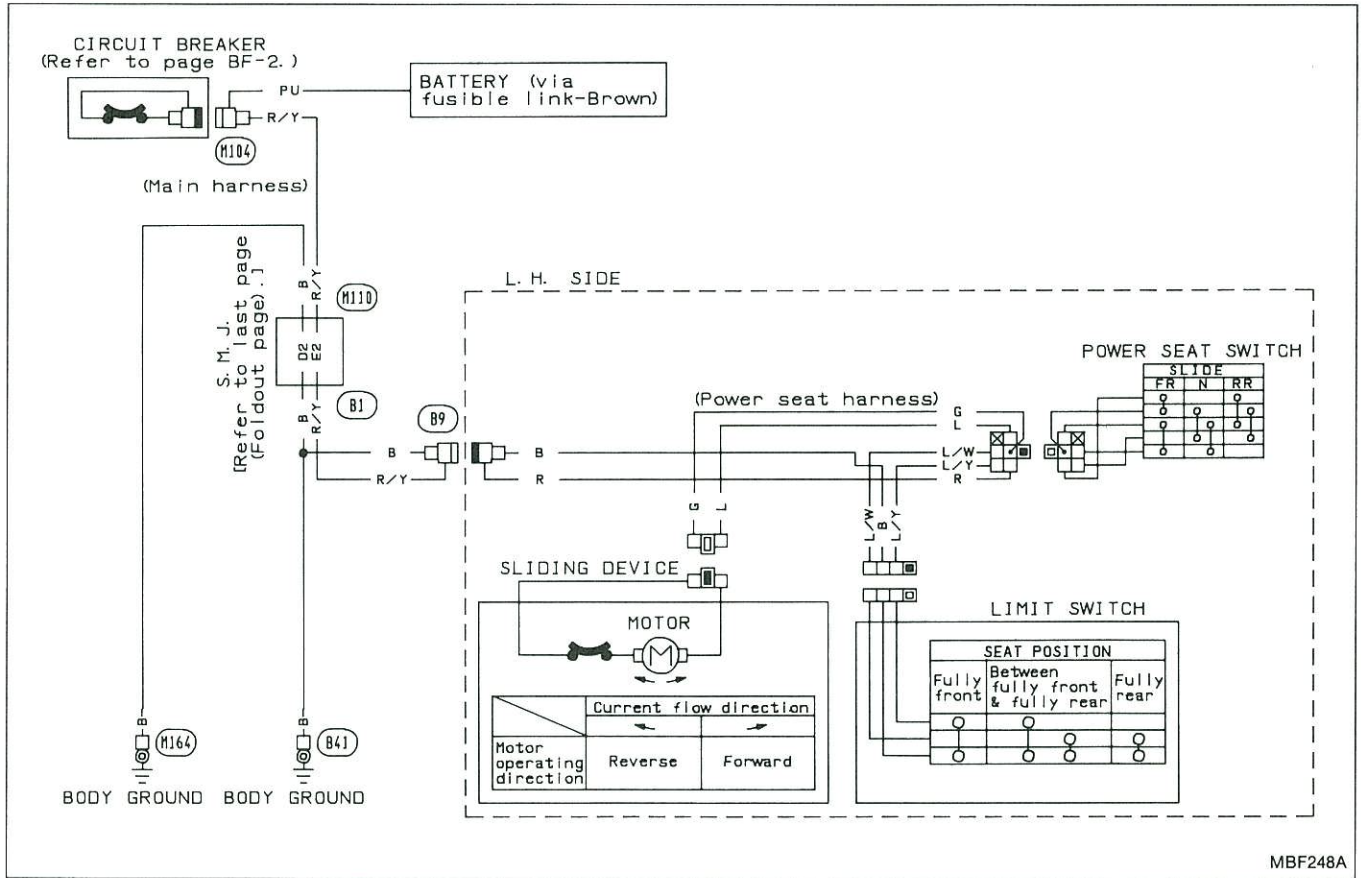
MBF520A



# SEAT

## Front Seat (Cont'd)

### POWER SEAT/WIRING DIAGRAM



## Rear Seat

