

Fig. 1 - Removing Pulley Case from Quill

- 11 Belt pulley case
- 16 Quill
- 19 Shims

Remove pulley case 11 (fig. 1) from quill 16.

IMPORTANT: Be careful not to damage shims 19 between pulley case and quill.

Remove quill from transmission case.

Lift pulley drive gear hub assembly out of belt pulley case.

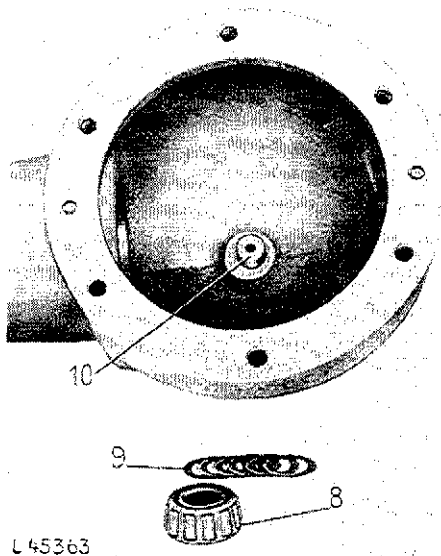


Fig. 2 - Removing Bearing Cone and Shims from Inner Bearing Pin

- 8 Inner bearing cone
- 9 Shims
- 10 Inner bearing pin

Remove bearing cone 8 (fig. 2) and shims 9 from inner bearing pin 10.

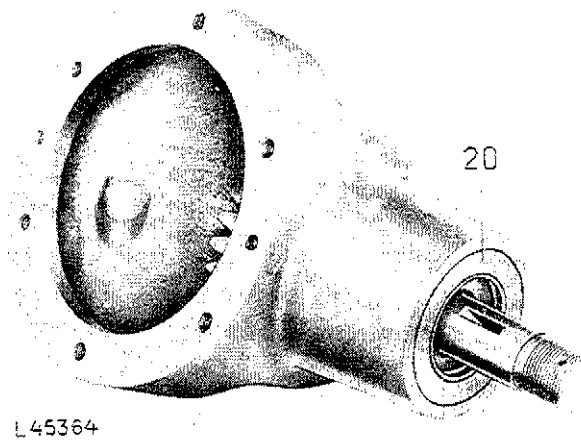


Fig. 3 - Removing Oil Seal from Belt Pulley Case

- 20 Oil Seal

Remove oil seal 20 (fig. 3) and pull outer bearing cone off shaft.

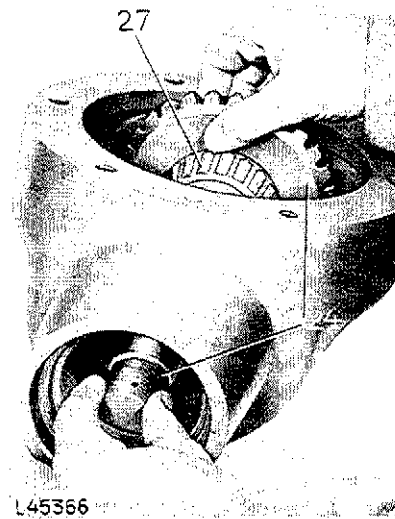
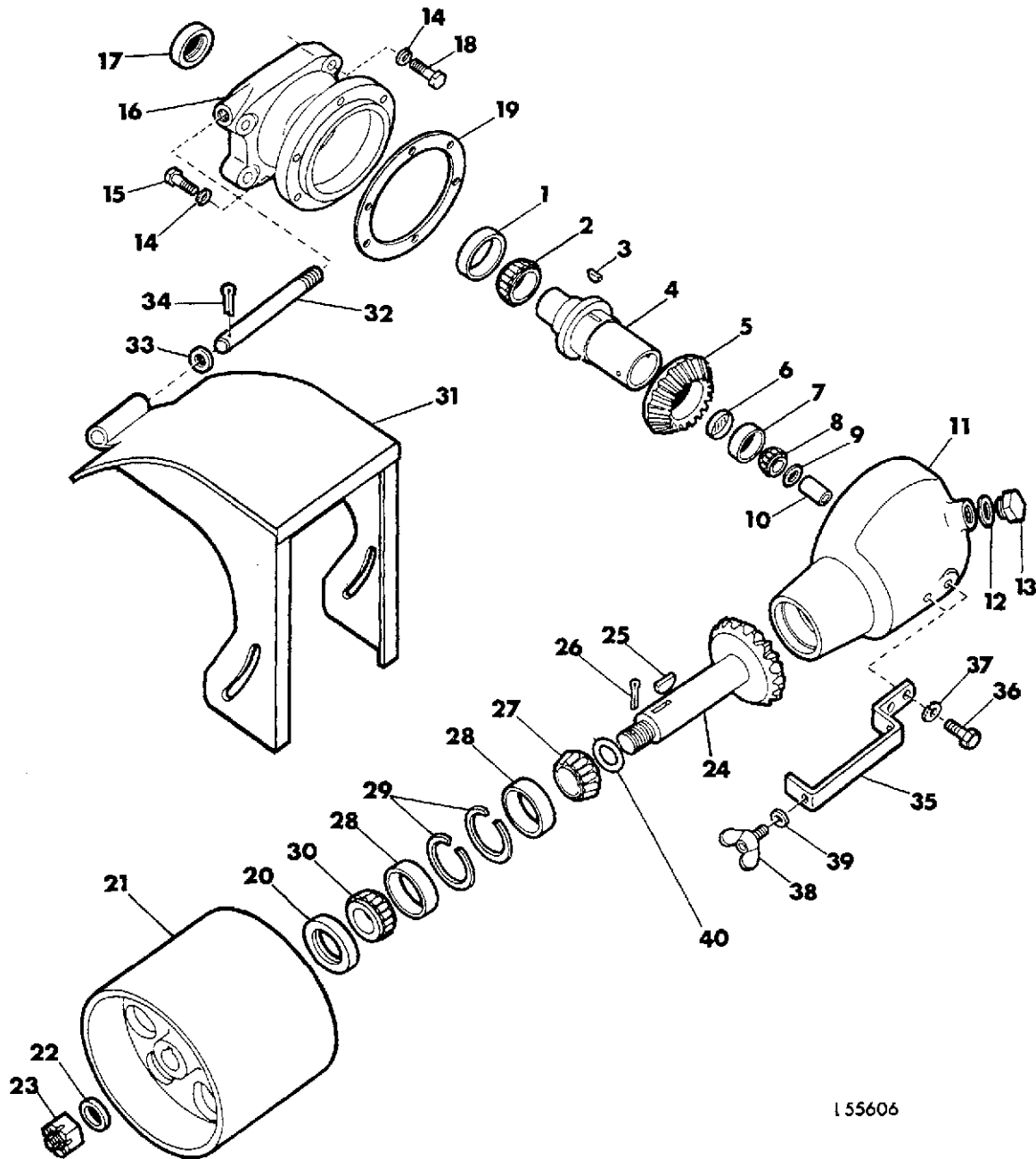


Fig. 4 - Removing Drive Shaft

- 24 Drive shaft
- 27 Inner bearing cone

Remove drive shaft 24 (fig. 4) with inner bearing cone 27 from belt pulley case.



155606

Fig. 5 — Parts of the Belt Pulley Drive Assembly

- | | | | |
|----------------------|--------------------------|-----------------|-------------------------|
| 1 Bearing cup | 11 Belt pulley case | 21 Belt pulley | 31 Pulley guard |
| 2 Bearing cone | 12 Aluminium washer | 22 Plain washer | 32 Pin |
| 3 Woodruff key | 13 Filler and drain plug | 23 Nut | 33 Washer |
| 4 Drive gear hub | 14 Lock washer (10 used) | 24 Drive shaft | 34 Cotter pin |
| 5 Drive gear | 15 Cap screw (6 used) | 25 Woodruff key | 35 Retainer |
| 6 Cup plug | 16 Quill | 26 Cotter pin | 36 Cap screw (2 used) |
| 7 Bearing cup | 17 Oil seal | 27 Bearing cone | 37 Lock washer (2 used) |
| 8 Bearing cone | 18 Cap screw (4 used) | 28 Bearing cups | 38 Wing nut (2 used) |
| 9 Shim | 19 Quill shims | 29 Snap rings | 39 Washer (2 used) |
| 10 Inner bearing pin | 20 Oil seal | 30 Bearing cone | 40 Shim |