

Fuel System

Table of Contents

Exploded View	2-2	Carburetor Assembly Notes	2-14
Specifications	2-4	Carburetor Cleaning and Inspection	2-15
Fuel System Diagram	2-5	Float Arm Level Inspection and Adjustment	2-16
Throttle Cable	2-6	Fuel Pump Removal/Installation Note	2-16
Throttle Cable Adjustment	2-6	Flame Arrester.....	2-17
Throttle Case and Cable Removal.....	2-6	Removal	2-17
Throttle Case and Cable Installation Notes	2-7	Installation Notes.....	2-17
Throttle Case and Cable Lubrication.....	2-7	Cleaning.....	2-17
Throttle Cable Inspection	2-8	Intake Manifold, Reed Valves	2-18
Choke Cable	2-9	Removal	2-18
Choke Cable Adjustment.....	2-9	Installation Notes.....	2-18
Choke Knob and Cable Removal.....	2-9	Reed Valve Inspection.....	2-18
Choke Cable and Knob Installation Notes	2-10	Valve Holder Inspection	2-19
Inspection	2-10	Valve Stop Inspection	2-19
Lubrication.....	2-10	Fuel Tank.....	2-20
Carburetor/Fuel Pump	2-11	Fuel Tank Removal.....	2-20
Idle Speed Adjustment.....	2-11	Fuel Tank Installation Notes	2-20
Mixture Screw Adjustment	2-11	Fuel Tank Cleaning.....	2-21
High Altitude Performance Adjustment.....	2-12	Fuel Filler and Tube Removal	2-21
Synchronization.....	2-12	Fuel Filler and Tube Installation Notes	2-21
Carburetor Removal.....	2-13	Fuel Filter Screen Cleaning	2-22
Carburetor Installation Notes	2-13	Fuel Filter Inspection.....	2-22
Carburetor Disassembly	2-13		

2-2 FUEL SYSTEM

Exploded View

1. Main Jet
2. Pilot Jet
3. Diaphragm Needle
4. Check Valve

T1 : 7.8 N-m (0.80 kg-m, 69 in-lb)

T2 : 9.8 N-m (1.0 kg-m, 87 in-lb)

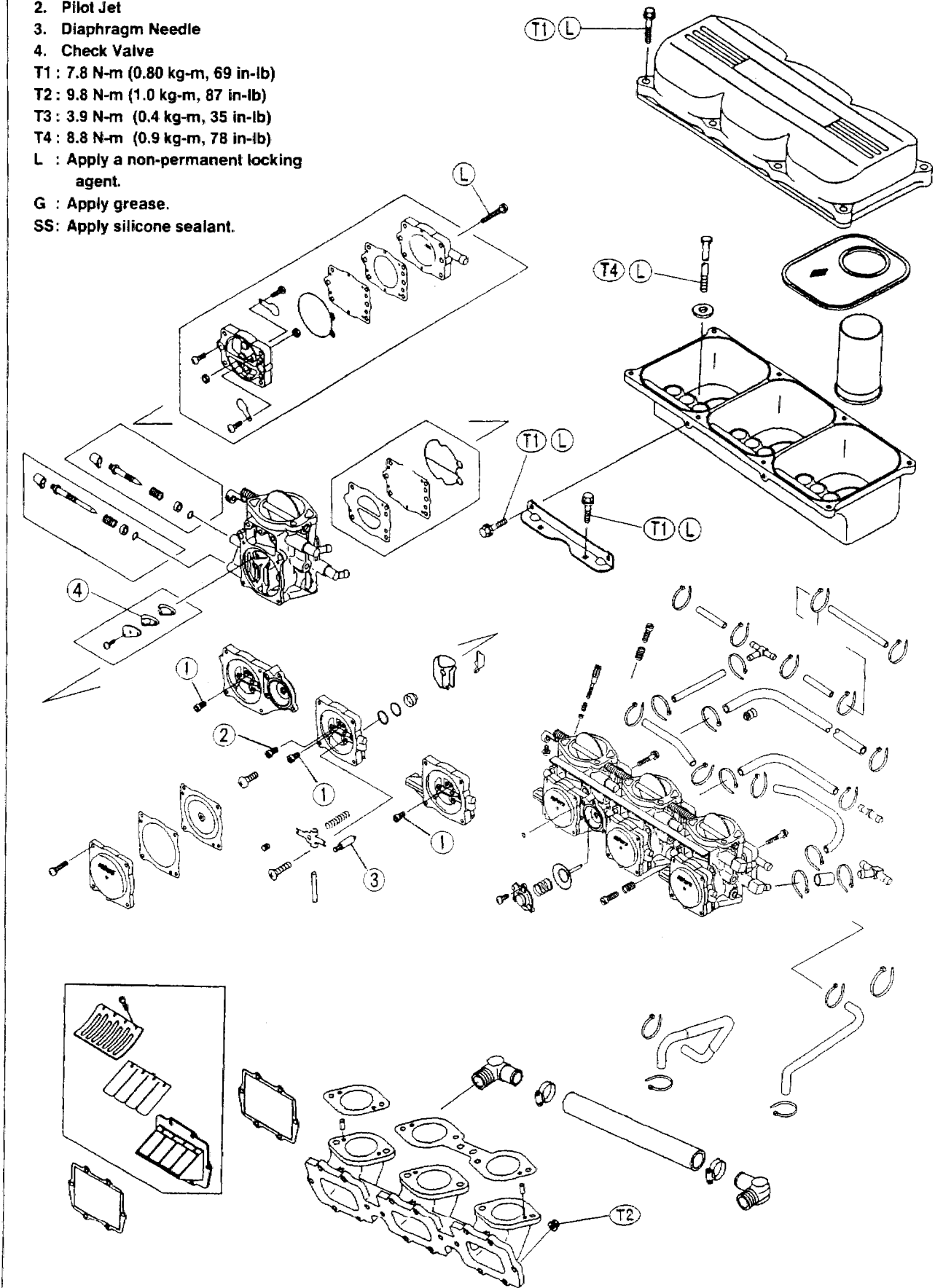
T3 : 3.9 N-m (0.4 kg-m, 35 in-lb)

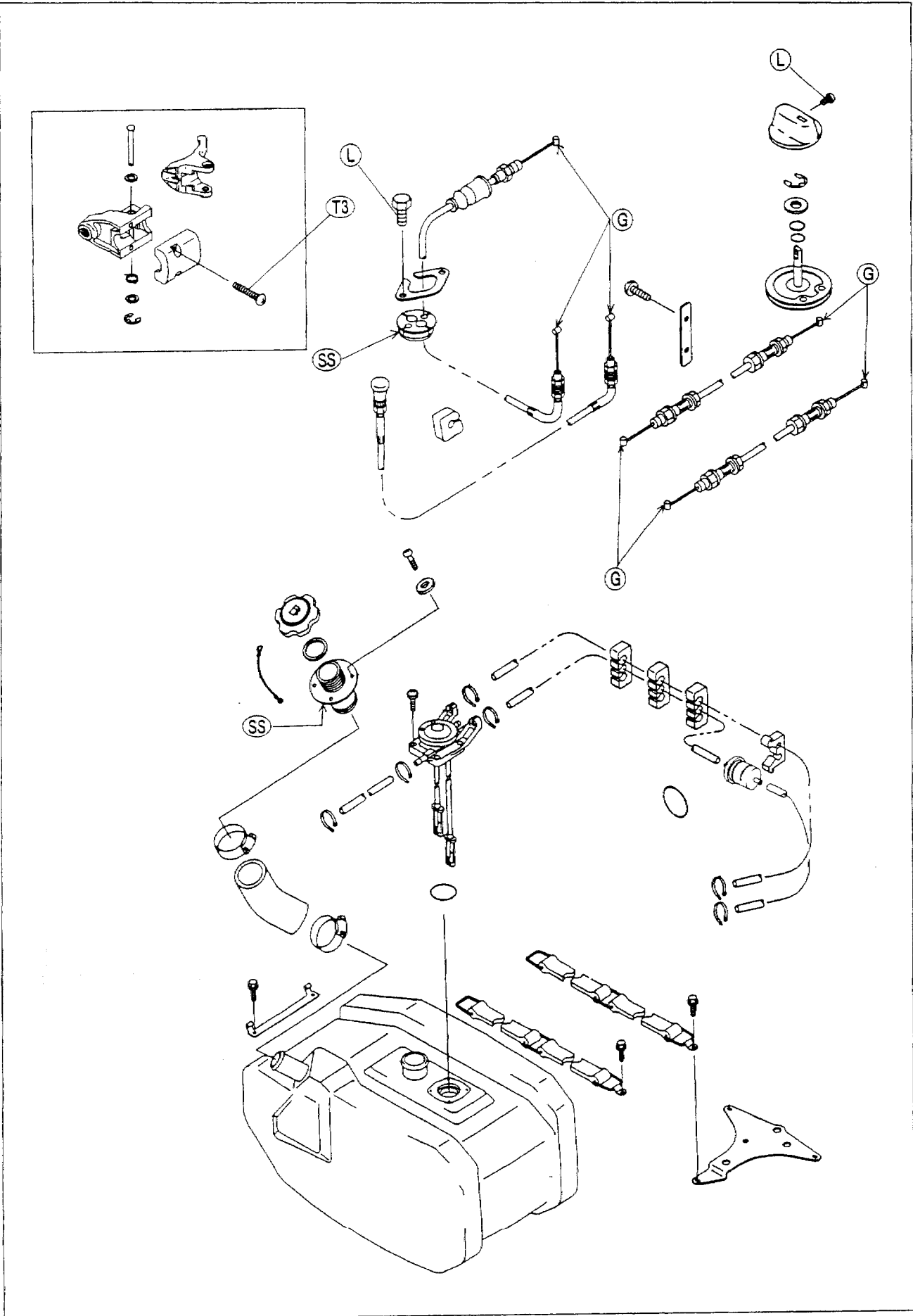
T4 : 8.8 N-m (0.9 kg-m, 78 in-lb)

L : Apply a non-permanent locking agent.

G : Apply grease.

SS : Apply silicone sealant.





2-4 FUEL SYSTEM

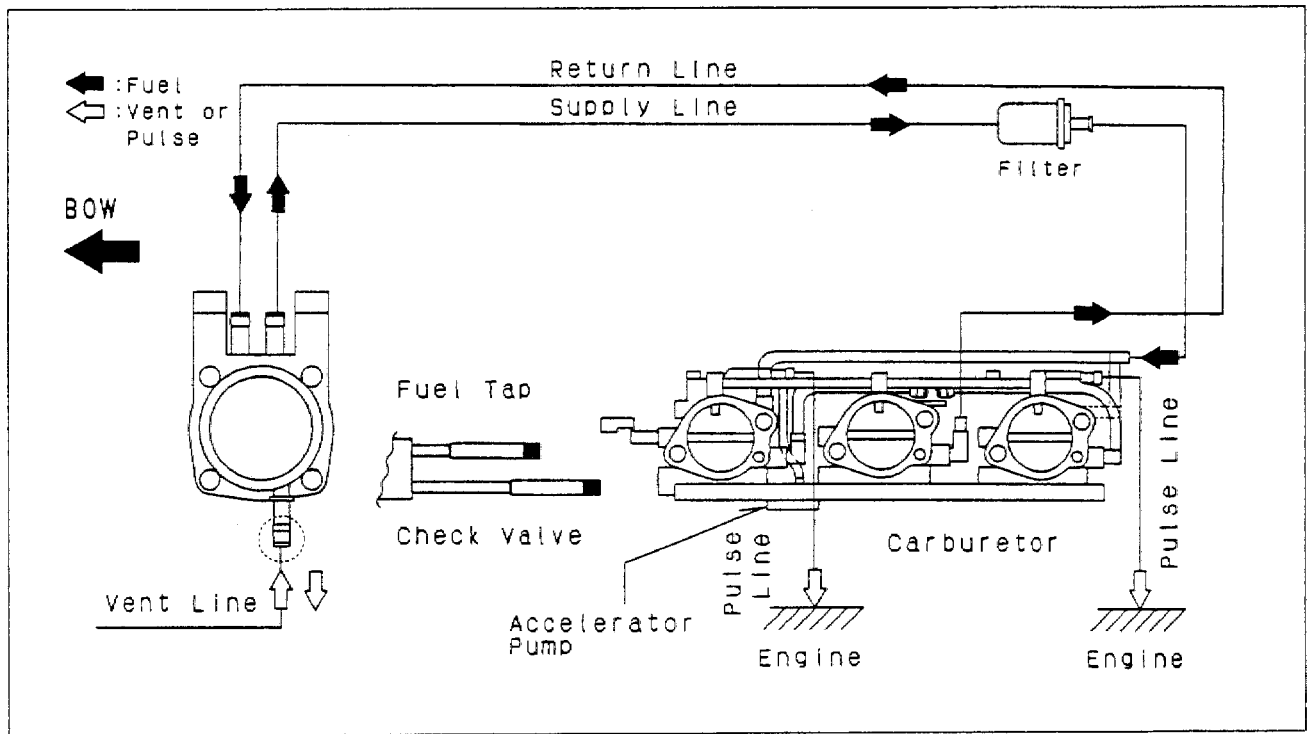
Specifications

Item	Standard	Service Limit
Carburetor		
Make, type	Keihin, CDK II 38-29	---
Size	33 mm Venturi	---
Mixture screws:		
Low speed	1 1/8 ± 1/4 turn open	---
High speed	1 ± 1/4 turn open	---
Main jet:		
Front	#125	
Middle	#120	
Rear	#120	
Pilot jet	#78	
Float arm level	1.0 ~ 2.0 mm	---
Idle speed:		
in water	1 250 ± 100 rpm	---
out of water	1 800 ± 100 rpm	---
Reed Valve		
Reed warp	---	0.2 mm
Fuel Tank		
Capacity	52 L (including 7 L reserve)	---

Special Tool – Pressure Cable Luber: K56019-021

Sealant – Kawasaki Bond (Silicone Sealant): 56019-120

Fuel System Diagram

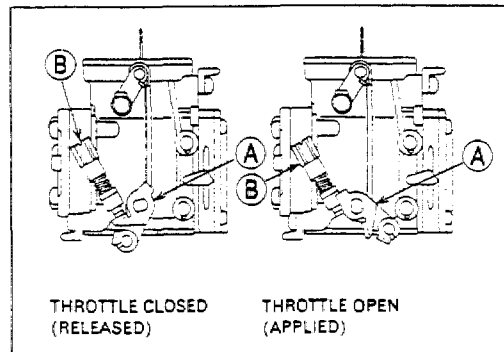


2-6 FUEL SYSTEM

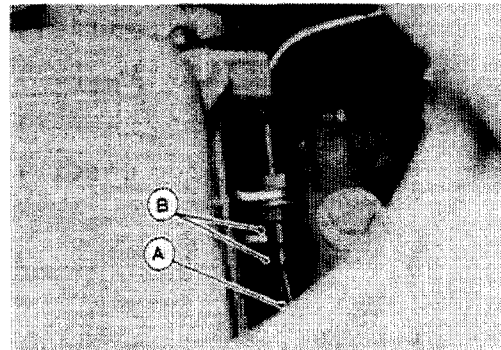
Throttle Cable

Throttle Cable Adjustment

- Check throttle cable adjustment.
- With the throttle lever released, the lower stop on the throttle pivot arm [A], should rest against the idle adjust screw [B], and there should be slight slack in the throttle cable.
- When the throttle lever is fully applied (pulled), the upper stop on the pivot arm should be all the way up against the stop on the carburetor.

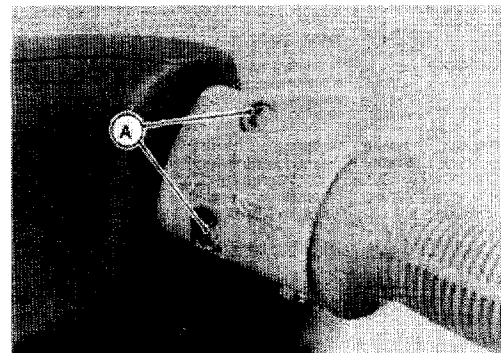


- If necessary, adjust the throttle cable [A].
- Loosen and turn the locknuts [B] at the cable holder until the lower stop on the pivot arm hits against the idle adjust screw with slight cable slack.
- Tighten the locknuts securely.

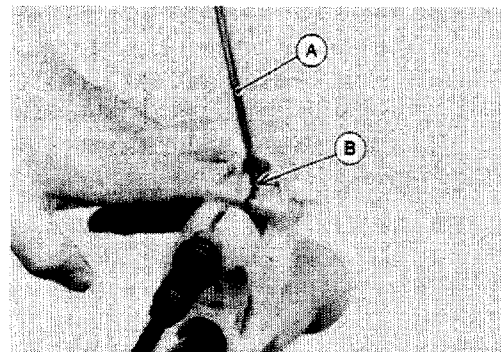


Throttle Case and Cable Removal

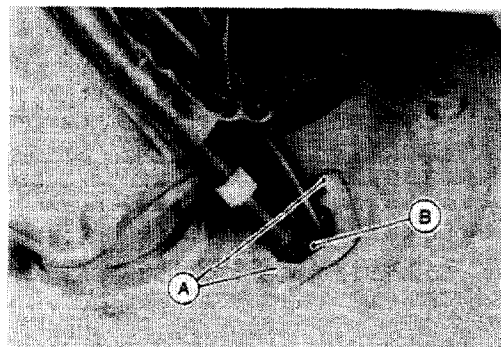
- Disconnect the throttle cable from carburetor.
- Remove:
 - Handlebar Pad
 - Throttle Case Mounting Screws [A]
 - Start/Stop Switch
 - Handlebar
 - Steering Cover



- Disconnect the throttle cable from case.
- Use a screw driver [A] to separate the tip of the cable end [B] from the case body.

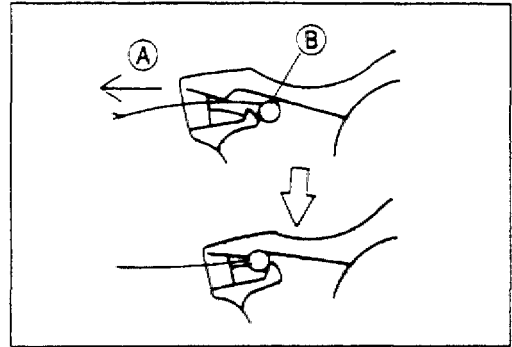


- Take out the bolts [A] and remove the grommet [B].
- Remove the throttle cable by carefully pulling the cable through the hull.

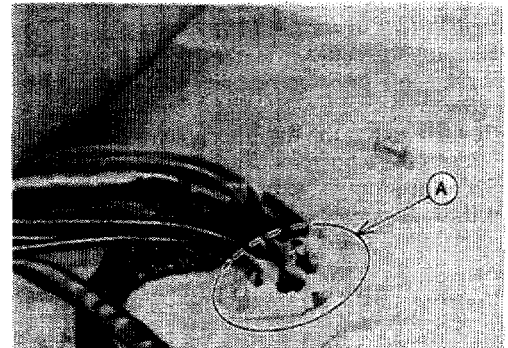


Throttle Case and Cable Installation Notes

- Pulling the throttle cable [A], position the tips of the cable end [B] as shown.



- Apply silicone sealant to the grommet [A].
- Route the throttle cable correctly (see Cable Routing section in the General Information chapter).
- Adjust the throttle cable (see Throttle Cable Adjustment).

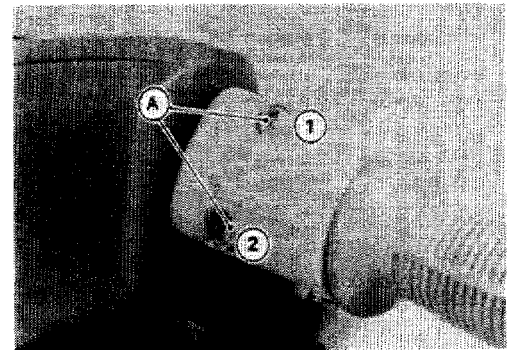


- Following the sequence shown, torque the mounting screws.

Torque - Throttle Case Mounting Screws:
 3.9 N-m (0.4 kg-m, 35 in-lb) [A]

CAUTION

Do not overtighten the mounting screws.



Throttle Case and Cable Lubrication

- Apply water resistant grease [A] to the tips of the throttle cable ends.

