

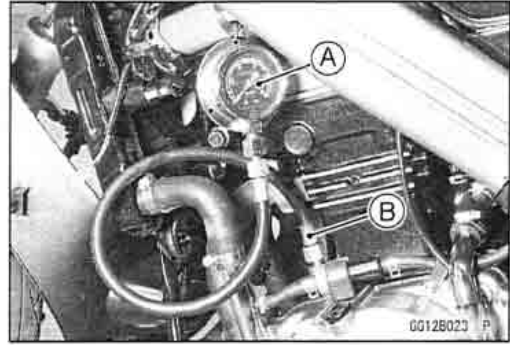
7-14 ENGINE LUBRICATION SYSTEM

Oil Pressure Measurement

Oil Pressure Measurement

- Remove the lower fairing (see Frame chapter).
- Remove the oil pressure switch, and attach the adapter [B] and gauge [A] to the switch hole.

Special Tools - Oil Pressure Gauge, 10 kgf/cm²: 57001-164
Oil Pressure Gauge Adapter, M18 × 1.5:
57001-1278



- Start the engine and warm up the engine.
- Run the engine at the specified speed, and read the oil pressure gauge.
- ★ If the oil pressure is much lower than the standard, check the oil pump and oil pump relief valve.
- ★ If the reading is much higher than the standard, check the oil passages for clogging.

Oil Pressure

Standard: more than 345 kPa (3.5 kgf/cm², 50 psi)
@ 4 000 r/min (rpm), oil temperature 90°C
(194°F)

- Stop the engine.
- Remove the oil pressure gauge and adapter.

⚠ WARNING

Take care against burns from hot engine oil that will drain through the oil passage when the gauge adapter is removed.

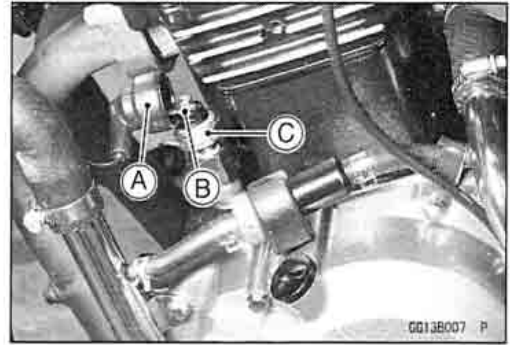
- Apply silicone sealant to the threads of the oil pressure switch, and tighten it.

Torque - Oil Pressure Switch: 15 N·m (1.5 kgf·m, 11 ft·lb)

Oil Pressure Switch

Oil Pressure Switch Removal

- Remove:
 - Lower Fairing (see Frame chapter)
 - Switch Cover [A]
 - Switch Terminal [B]
 - Oil Pressure Switch [C]



Oil Pressure Switch Installation

- Apply silicone sealant to the threads of the oil pressure switch and tighten it.
 - Sealant - Kawasaki Bond (Silicone Sealant): 56019-120**
 - Torque - Oil Pressure Switch: 15 N·m (1.5 kgf·m, 11 ft·lb)**
- Tighten the oil pressure switch terminal bolt.
- Apply grease to the terminal.

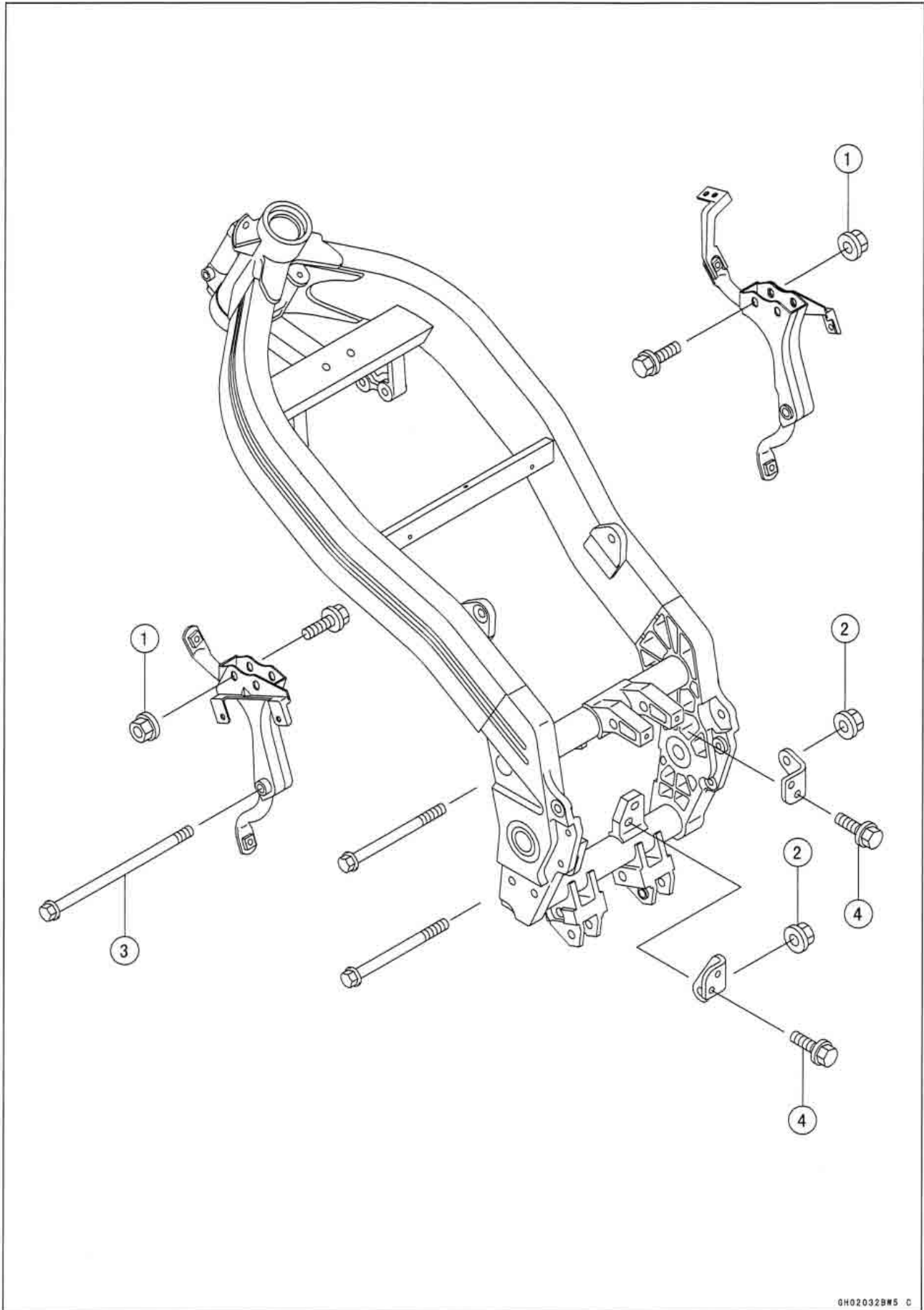
Engine Removal/Installation

Table of Contents

Exploded View	8-2
Engine Removal/Installation	8-4
Engine Removal.....	8-4
Engine Installation.....	8-5

8-2 ENGINE REMOVAL/INSTALLATION

Exploded View



ENGINE REMOVAL/INSTALLATION 8-3

Exploded View

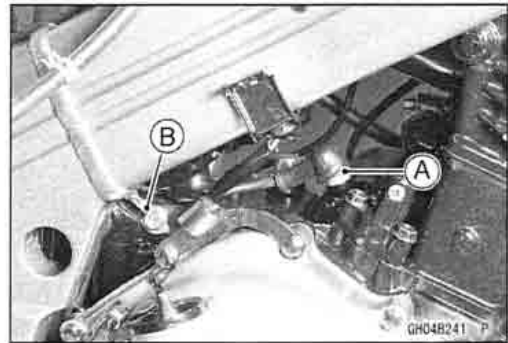
No.	Fastener	Torque			Remarks
		N-m	kgf-m	ft-lb	
1	Engine Mounting Bracket Nuts	25	2.5	18	
2	Engine Mounting Nuts	44	4.5	33	
3	Engine Mounting Bolts	44	4.5	33	
4	Engine Mounting Bracket Bolts	25	2.5	18	

8-4 ENGINE REMOVAL/INSTALLATION

Engine Removal/Installation

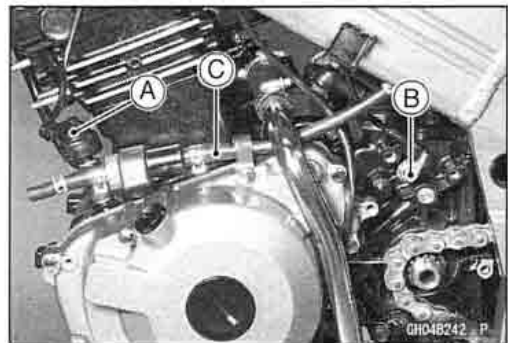
Engine Removal

- Drain the engine oil (see Engine Lubrication System in the Periodic Maintenance chapter).
- Drain the coolant (see Cooling System in the Periodic Maintenance chapter).
- Remove:
 - Seat
 - Side Covers
 - Fairings (see Frame chapter)
 - Fuel Tank (see Fuel System chapter)
 - Side Stand
 - Side Stand Switch Terminal
 - Radiator with Left Side Coolant Pipe
 - Mufflers (see Engine Top End chapter)
 - Engine Sprocket (see Final Drive chapter)
 - Throttle and Choke Cable
 - Lower End of Clutch Cable
- Disconnect:
 - Starter Motor Lead Terminal [A]
 - Battery Ground Lead Terminal [B]
 - Breather Hose
 - Alternator Lead Connector
 - Crankshaft Sensor Lead Connector

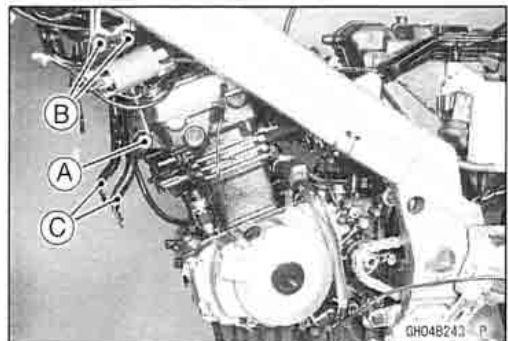


- Oil Pressure Switch Lead Connector [A]
- Neutral Switch Lead Terminal [B]

- Before removing the engine, loosen the carburetor holder clamp and hold the carburetor to the air cleaner duct.
- Remove the coolant hose [C] with coolant filter from the carburetor.

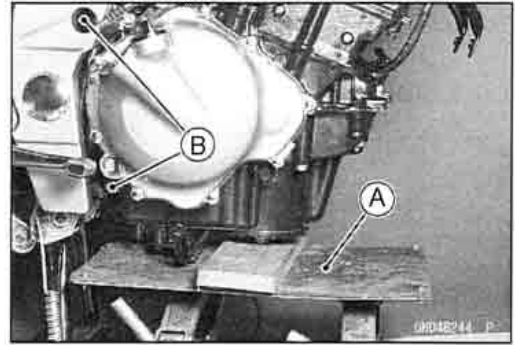


- Remove the spark plug caps.
- Remove the engine bracket mounting bolts [A], [B] and take the both brackets [C] with the ignition coils off the frame.



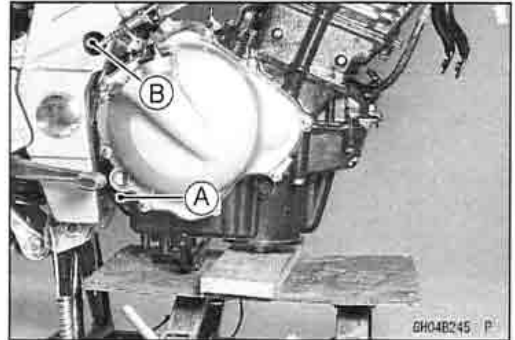
Engine Removal/Installation

- Support the engine with a suitable stand [A] and remove the engine mounting bolts [B].



Engine Installation

- Engine installation is the reverse of removal, and note the following point.
- Insert the lower engine mounting bolt [A] first while supporting the engine. Then insert the upper engine mounting bolt [B], and tighten the nut loosely.



- Before tightening the mounting bolts, install the engine brackets. When inserting the front engine mounting bolt, use the suitable stand under the engine to lift it.

Torque - Engine Mounting Bracket Bolts, Nuts: 25 N·m (2.5 kgf·m, 18 ft·lb)

Engine Mounting Bolts, Nuts: 44 N·m (4.5 kgf·m, 33 ft·lb)

- Route the wiring harness correctly (see Cable, Wire and Hose Routing in the Appendix chapter).
- Adjust the following items after engine installation.
 - Throttle cable (see Fuel System in the Periodic Maintenance chapter)
 - Choke Cable (see Fuel System chapter)
 - Clutch Cable (see Clutch in the Periodic Maintenance chapter)
 - Drive Chain Slack (see Final Drive in the Periodic Maintenance chapter)
 - Carburetor Idling (see Fuel System in the Periodic Maintenance chapter)
- Fill the engine oil (see Engine Lubrication System in the Periodic Maintenance chapter).
- Fill the coolant (see Cooling System in the Periodic Maintenance chapter).