
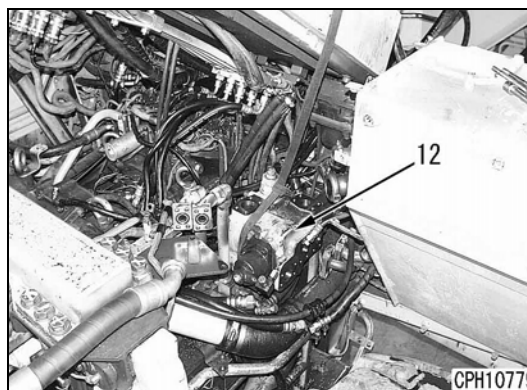
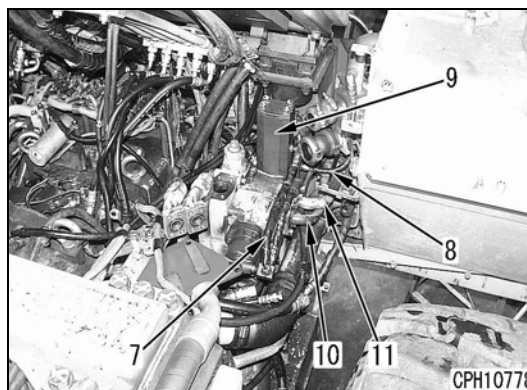
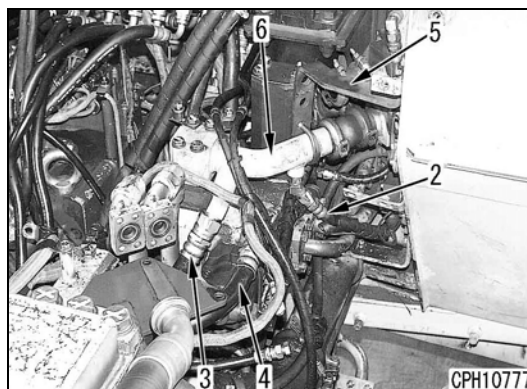


HOIST VALVE UNIT

REMOVAL

1. Drain the hydraulic oil.
2. Left fender
Lift off left fender (1).
3. Steering valve
Remove the steering valve assembly. For details, see Removal of steering valve assembly.
4. Hose and piping
 - A. Remove the tube of port P of the loosened hoist valve and disconnect tank circuit hoses (2), (3), (4).
 - B. Remove bracket (5) and tank circuit tube (6).
 - C. Remove the throttle between tube (6) and hoist valve, too.
 - D. Disconnect hoses (7) and (8) of pilot ports (PA) and (PB).
 - E. Remove check valve (9).  1
 - F. Disconnect tube (10) and (11) of hoist cylinder ports (A) and (B).
 - ★ Loosen the rear tube clamp and move the tubes toward the hydraulic tank.
5. Hoist valve
Remove hoist valve assembly (12).



Hoist valve assembly: **65 kg (143 lbs)**

INSTALLATION

- Carry out installation in the reverse order of removal.



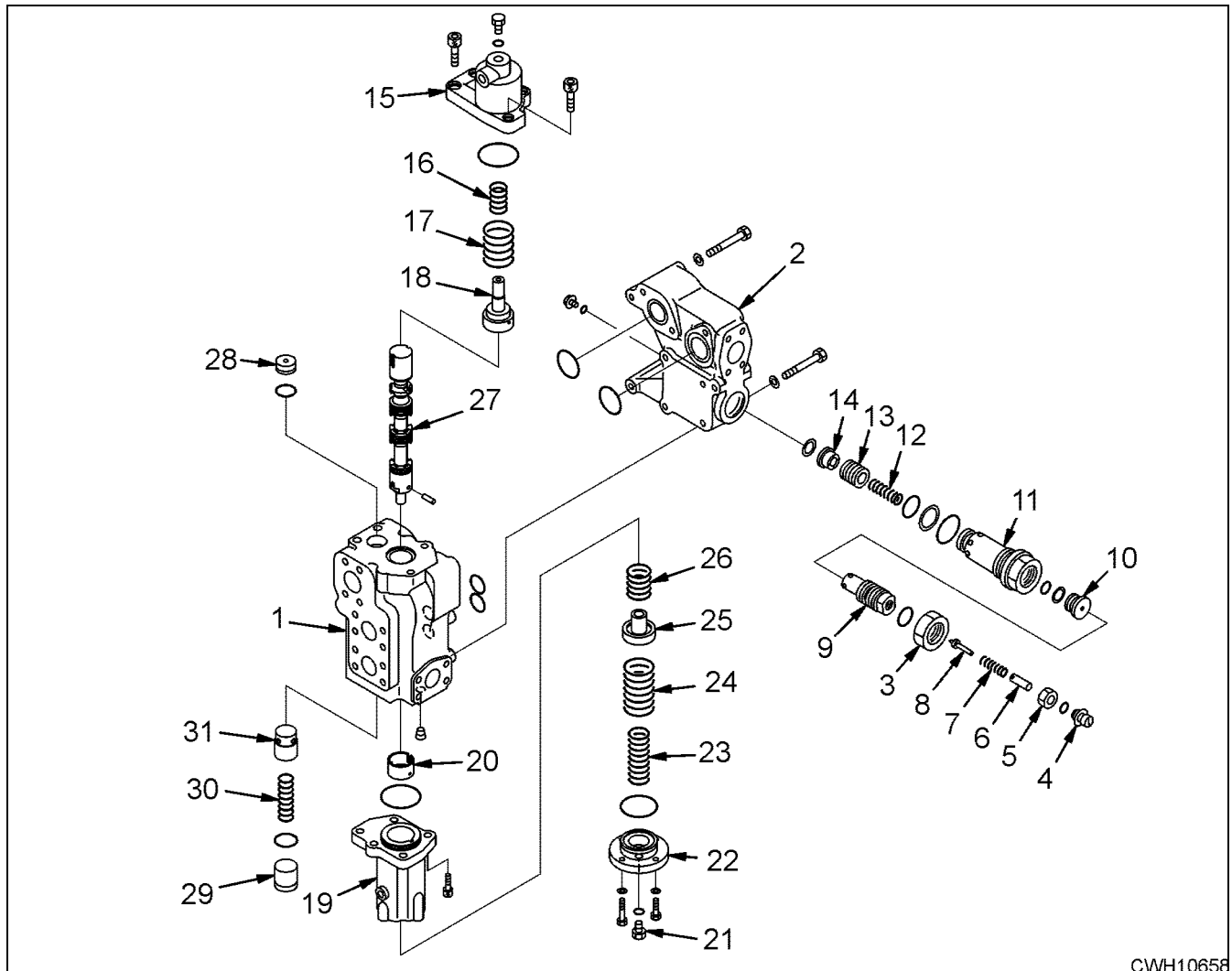
 Front wheel mounting bolt: **14.7 - 34.3 Nm (11 - 25 ft/lbs)**

Refilling with oil

- Add specified oil to the specified level.

OVERHAUL PROCEDURES

DISASSEMBLY



CWH10658

1. Housing assembly
 - A. Remove housing (2) from body (1).
 - B. Loosen nut (3).
 - C. Remove screw (4), nut (5), retainer (6), spring (7) and poppet (8).
 - D. Remove holder (9) and seat (10).
 - E. Loosen sleeve (11) and remove spring (12), valve (13), and retainer (14).
2. Spring carrier assembly
 - A. Remove spring carrier (15) from body (1), then remove springs (16) and (17) and retainer (18).
 - B. Remove spring carrier (19) from body (1), then remove retainer (20).
 - C. Remove plug (21).
 - D. Remove flange (22) from spring carrier (19), then remove springs (23) and (24), retainer (25), and spring (26).
3. Body assembly
 - A. Remove spool (27) and plug (28) from body (1).
 - B. Remove seat (29), spring (30), and valve (31) from body (1).