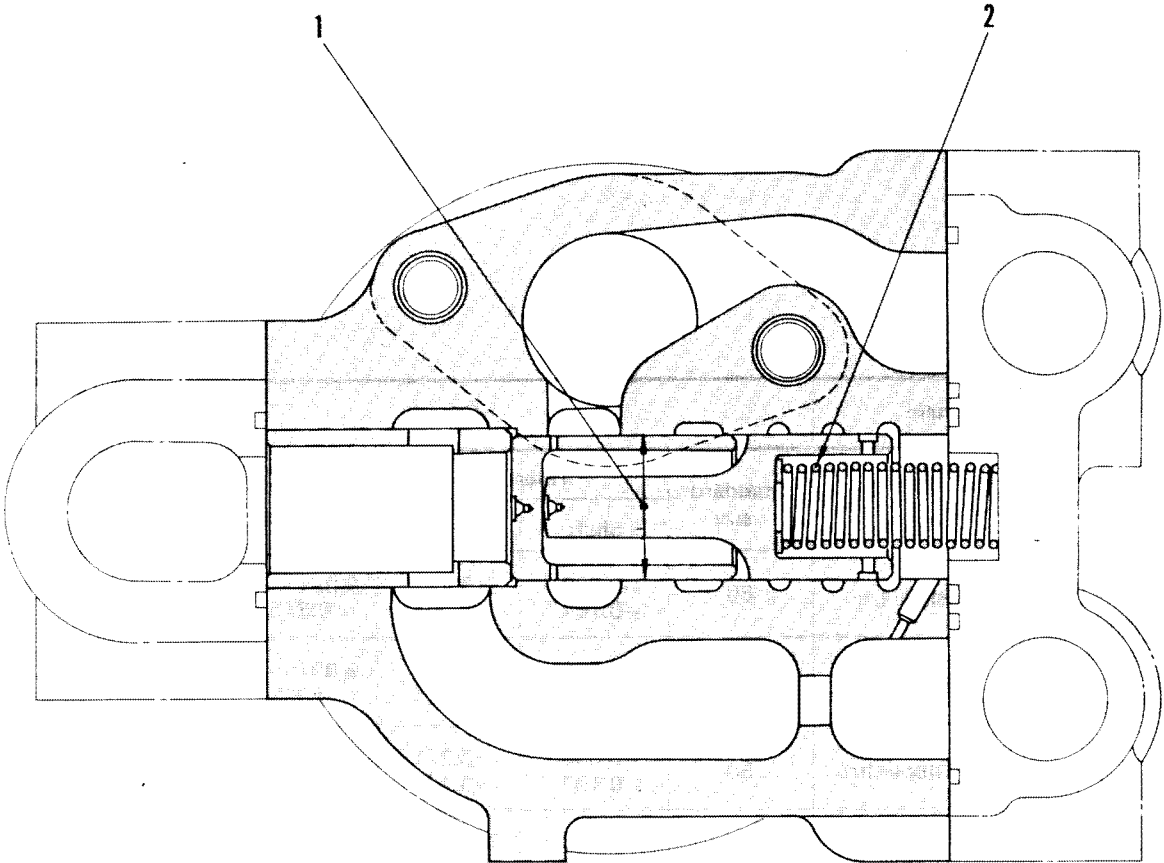


QUICK DROP VALVE

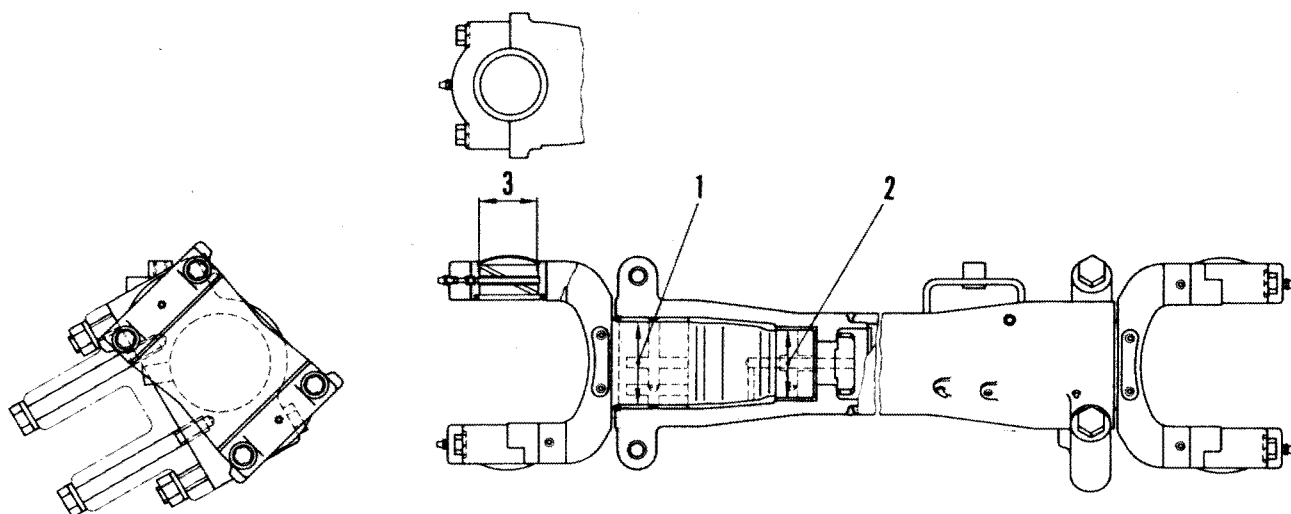


154F275

Unit: mm

No.	Check item	Criteria					Remedy
1	Clearance between plunger and valve body	Standard size	Tolerance		Standard clearance	Clearance limit	Replace
			Shaft	Hole			
		38	-0.011 -0.016	+0.010 0	0.011 – 0.026		
2	Valve spring	Standard size			Repair limit		
		Free length	Installation length	Installation load	Free length	Installation load	
		75.2	55.9	13.9 kg	67.7	12.5 kg	

# CYLINDER STAY



F15A01101

015A02

Unit: mm

No.	Check item	Criteria					Remedy
1	Clearance between cylinder yoke and bushing	Standard size	Tolerance		Standard clearance	Clearance limit	Replace
			Shaft	Hole			
		125	-0.085 -0.148	+0.063 0	0.085 – 0.211	0.5	
2	Clearance between cylinder yoke and bushing	100	-0.072 -0.126	+0.054 0	0.072 – 0.180	0.5	
3	Clearance between lift cylinder tranion and bushing	85	-0.120 -0.207	+0.054 0	0.120 – 0.261	0.5	