

ADJUSTING MIRROR

**WARNING**

Be sure to adjust the mirrors before starting work. If they are not adjusted properly, you cannot secure the visibility and may be injured or may injure someone seriously.

Loosen the bolt and nut installing the mirror, then adjust the mirror to a position which gives the best view from the operator's seat.

- Adjust the position and angle of each mirror so that it reflects a sight 200 mm above the ground and up to 1500 mm. In the adjustment, make sure that part of the dump truck's image also comes into view.

- Range of visibility

Mirror A: Must be possible to see hatched portion (A), area around point (A') where the tire contacts the ground, ground surface (A'') and the top edge of the dump body

Mirror B: Must be possible to see hatched portion (B)

Mirror C: Must be possible to see hatched portion (C) and part of the machine

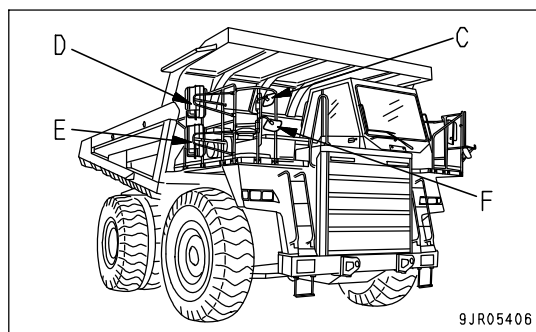
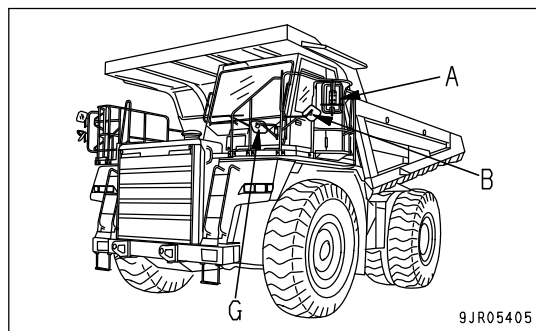
Mirror D: Must be possible to see hatched portion (D), area around point (D') where the tire contacts the ground, ground surface (D'') and the top edge of the dump body

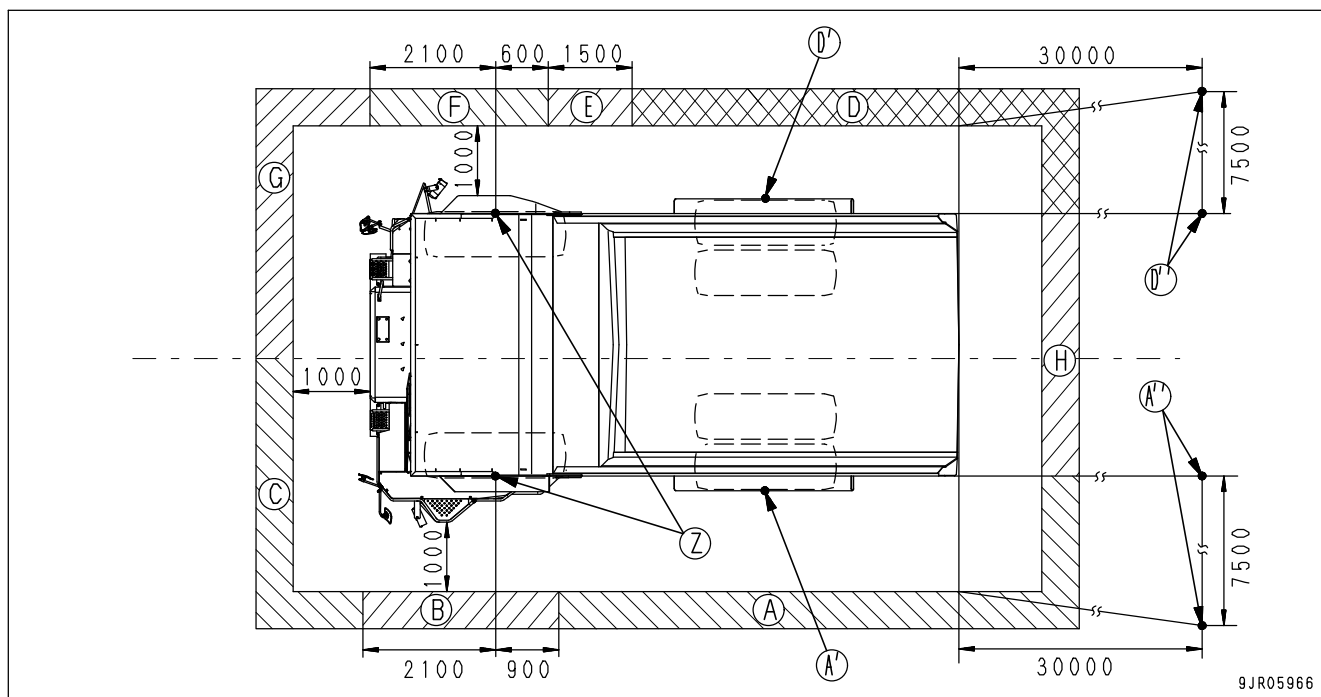
Mirror E: Must be possible to see hatched portion (E), hatched portion (D), area around point (D') where the tire contacts the ground, ground surface (D'') and the top edge of the dump body

Mirror F: Must be possible to see hatched portion (F) and part of the machine

Mirror G: Must be possible to see hatched portion (G) and part of the machine

Rear monitor (if equipped): Must be possible to see hatched portion (H)





(Z): Ground contact point of tire used as base