

## REMOVAL OF RUBBER SHOE ASSEMBLY

1. Loosen the valve (1) to reduce tension of the track shoe. ※ 1

⚠ Since the pressure in the recoil spring cylinder is very high, never turn the valve more than once to loosen it.

★ When the grease is not pushed out smoothly, move the machine forward and reverse.

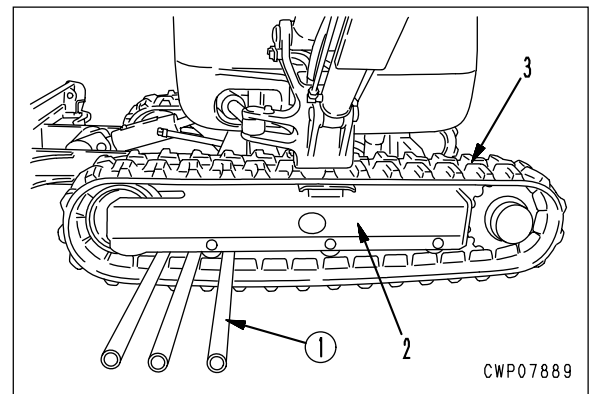
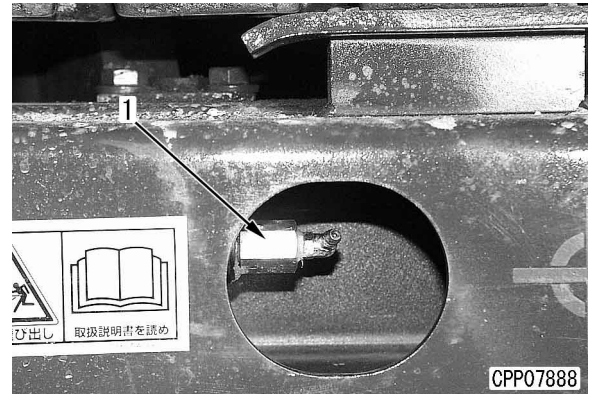
2. Swing the upper structure 90° and lift the track frame (2) a bit by using the work equipment.
  - ★ Lift the blade above beforehand.

3. Remove the rubber shoe assembly (3) by using the pipe ①.

★ Twine the pipe round the rubber shoe and turn the rubber shoe to the reverse side. When the rubber shoe is raised from the idler, slide the rubber shoe aside to remove it.



Rubber shoe assembly : **55 kg**



## INSTALLATION OF RUBBER SHOE ASSEMBLY

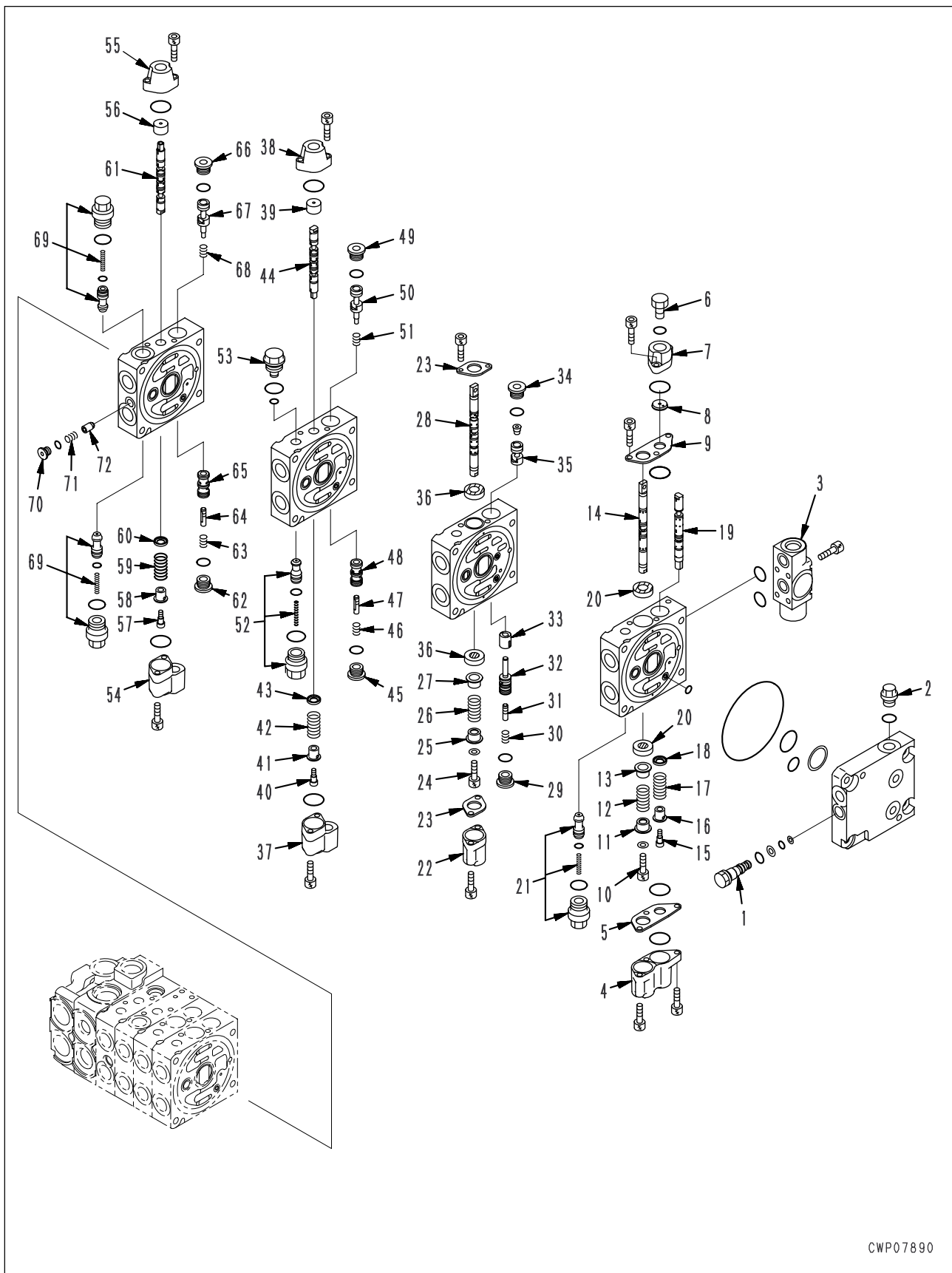
- When installing the rubber shoe assembly, reverse the removal procedures.

※ 1

★ Adjust tension of the track shoe. For details, see TESTING AND ADJUSTING, testing and adjusting track shoe tension.

# DISASSEMBLY OF CONTROL VALVE

## Control valve bottom (1/2)



CWP07890