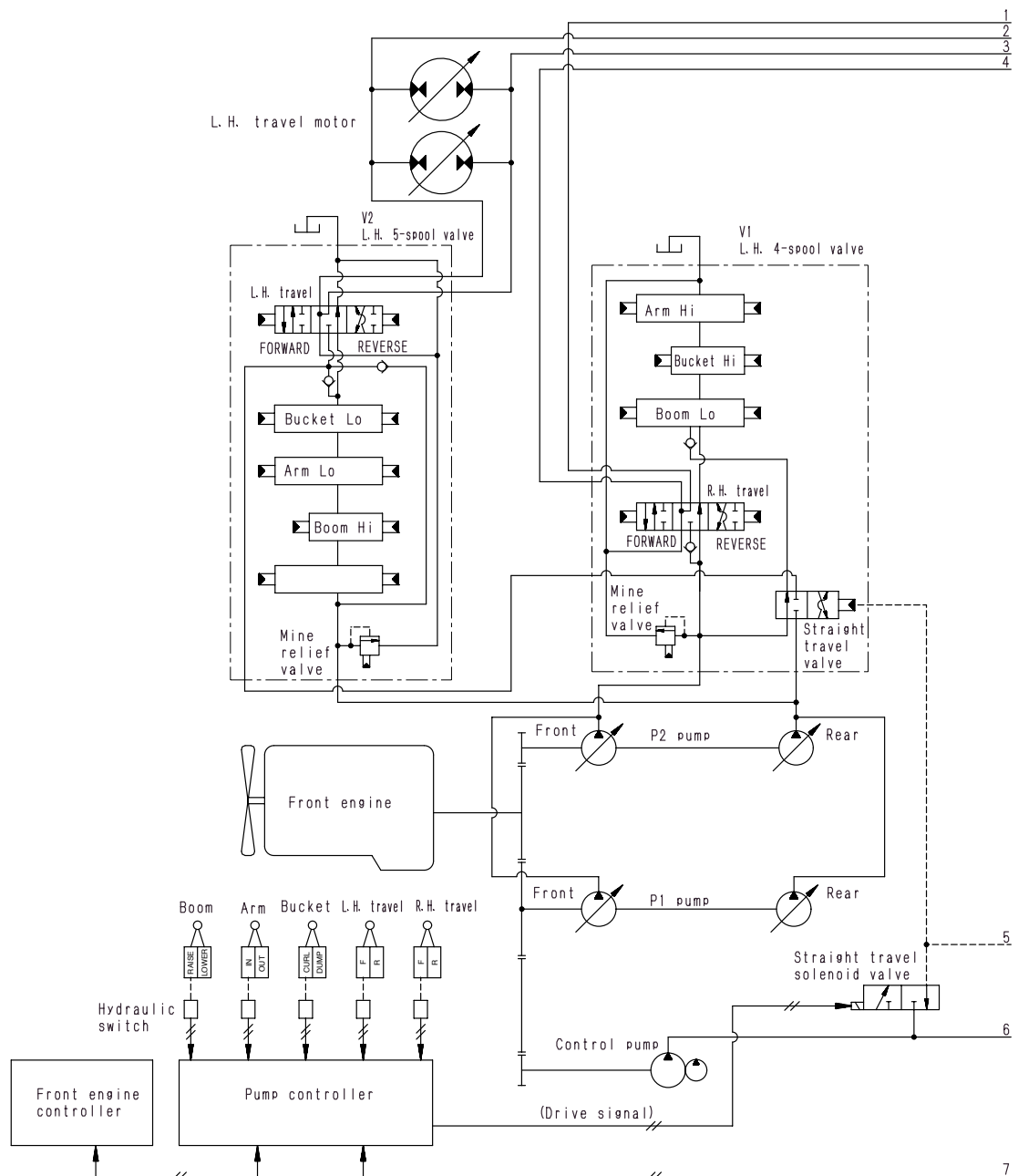


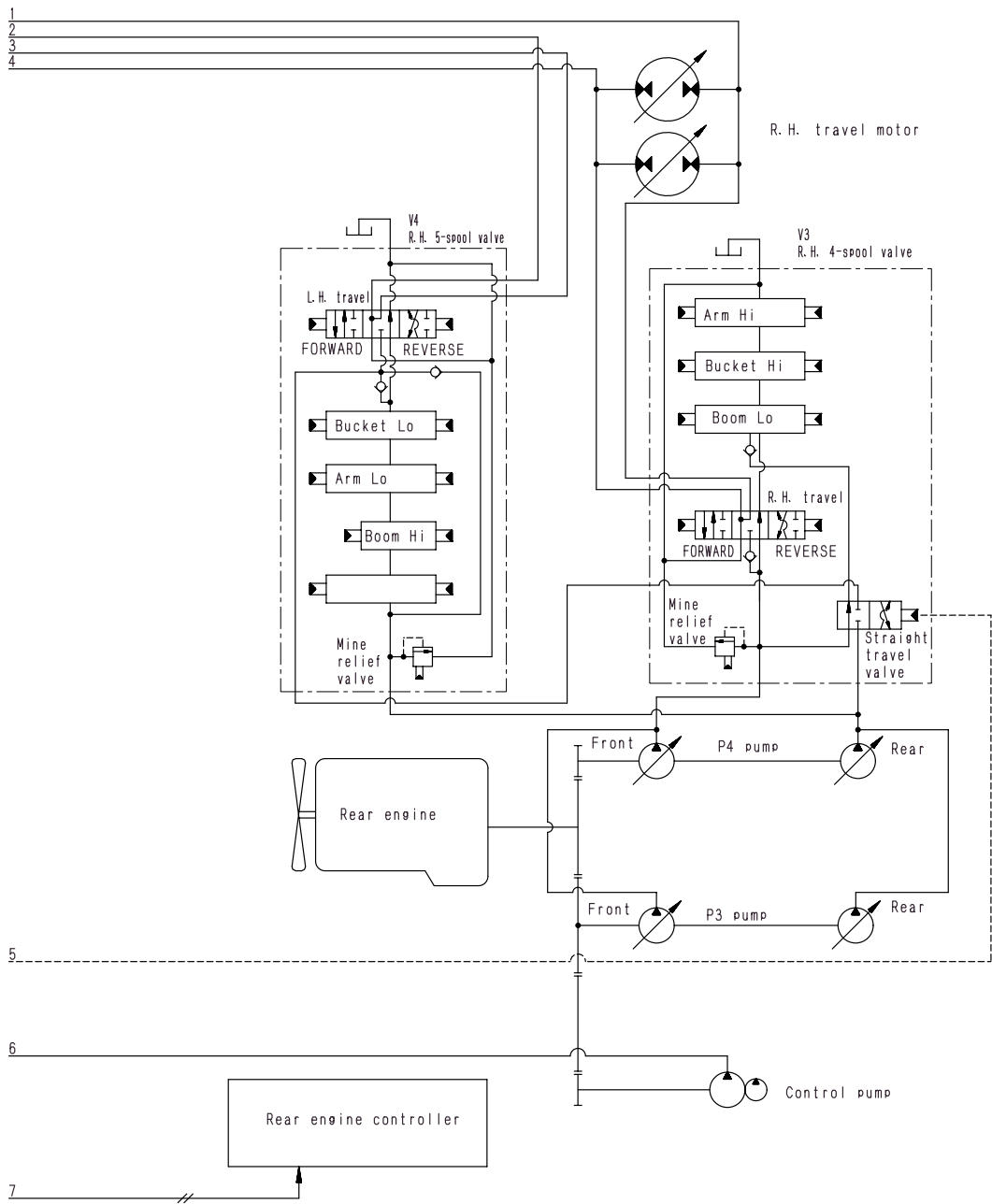
8. Straight-travel function



SJP09427

Outline

- When the travel is operated at the same time as the boom, arm, or bucket, the pressure oil flowing to the left and right travel circuits is divided and sent to the boom, arm, or bucket circuit. If the oil in one travel circuit is divided off, the amount of oil supplied to the travel motor will be less than in the travel circuit which is not divided, so the drop in the supply of oil to the travel motor will cause the machine to deviate.
- To prevent this, the straight-travel valve is switched to interconnect the left and right travel circuits. This ensures that the amount of oil supplied to the left and right travel motors is equal, so the left and right travel motors both rotate at the same speed, and this prevents any travel deviation.



SJP09428