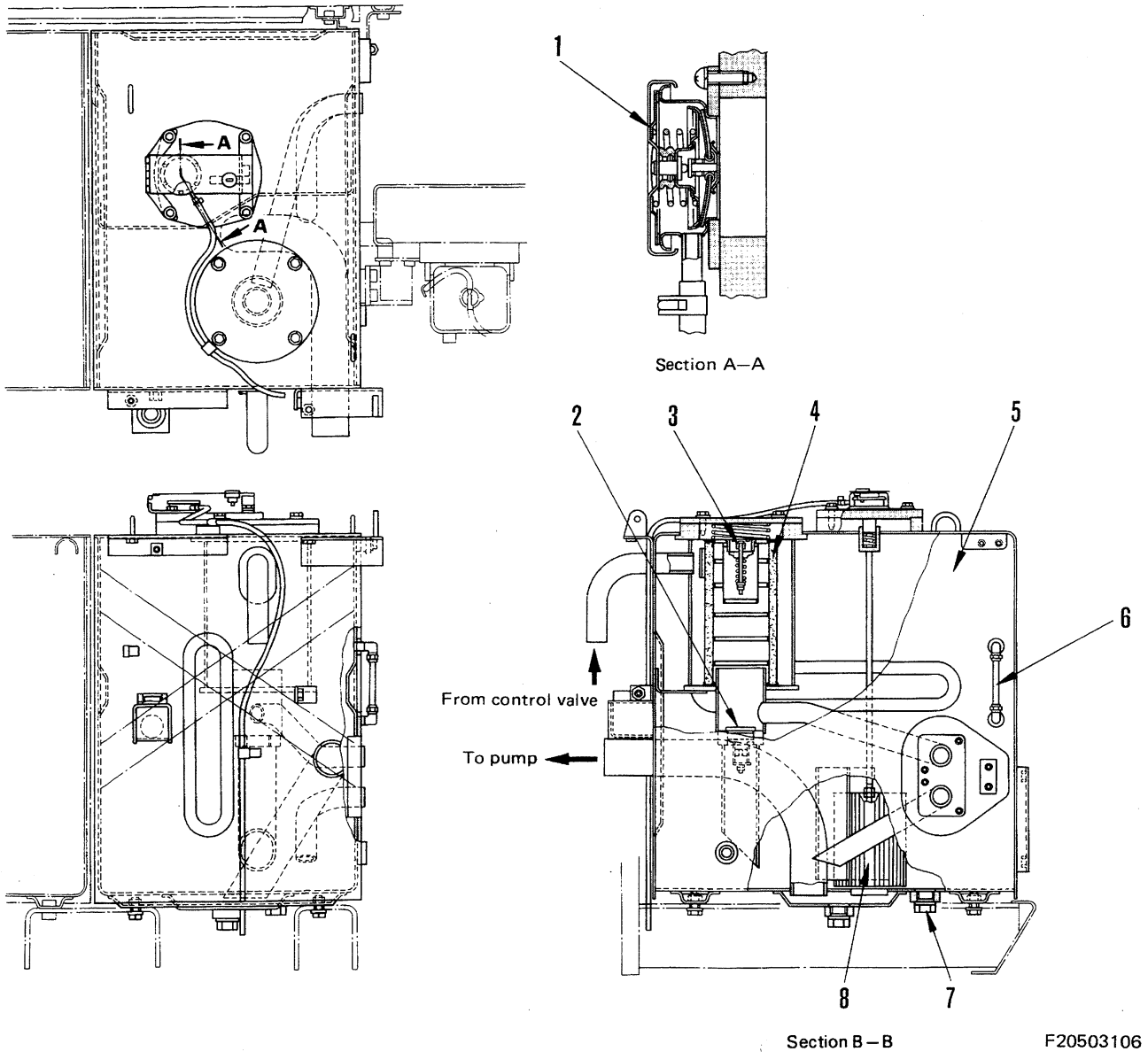
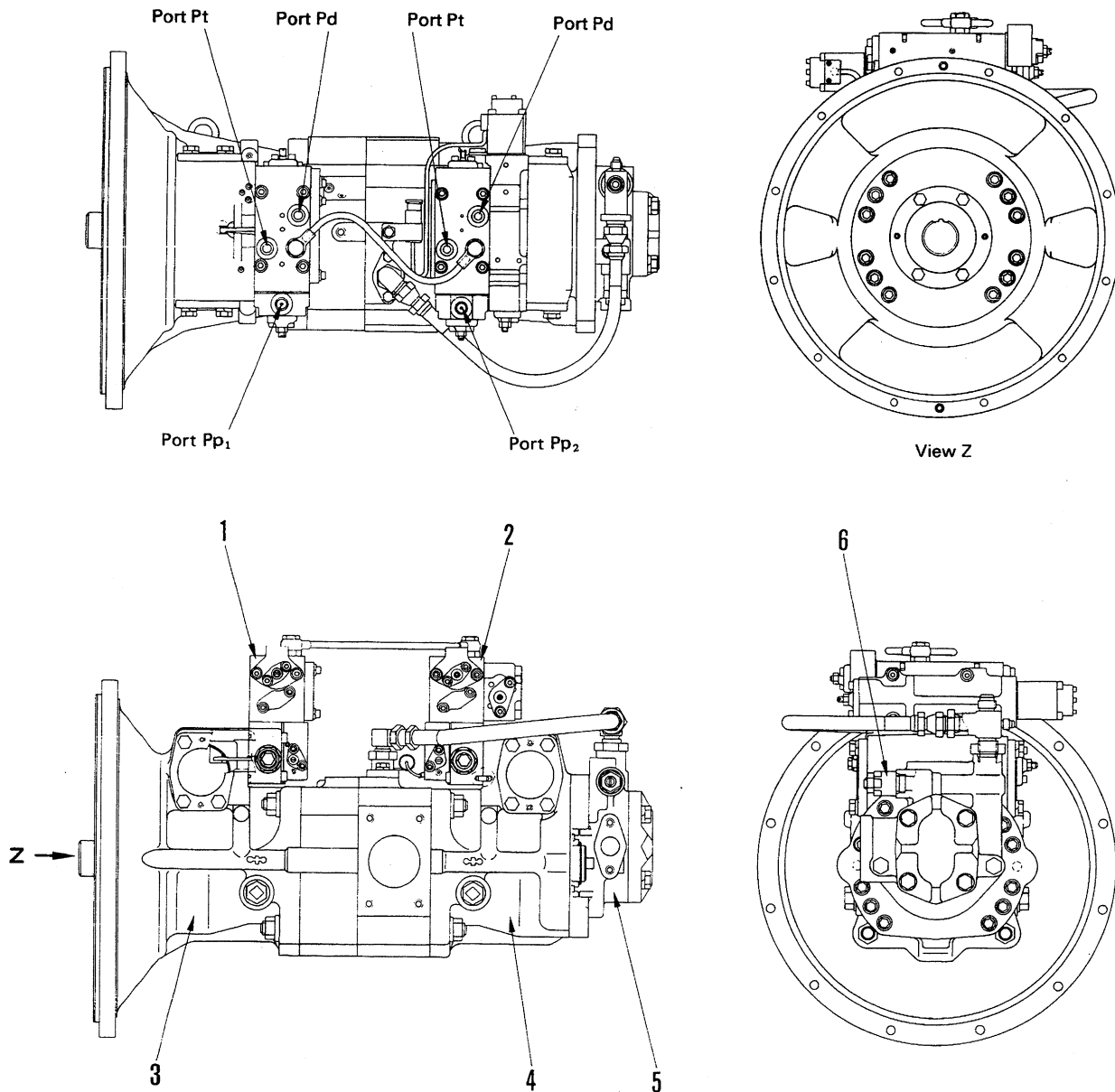


PC200-3 (Serial No. 26401 and up)  
PC220-3 (Serial No. 21729 and up)



## FRONT MAIN PUMP AND REAR MAIN PUMP ASSEMBLY



205F2072

### OUTLINE

- These pump assemblies consist of two variable-displacement swash-plate type pumps, two servo valve units, and impeller pump (built in between the front main pump and the rear main pump), a charging pump and a relief valve.
- These pump assemblies are installed to the damper. Each main pump has a servo valve, an NC and CO valve assembly. The NC and CO valve assembly have a TVC valve.
- The front main pump serves 5-spool valve.

1. Front main pump servo valve
2. Rear main pump servo valve
3. Front main pump
4. Rear main pump
5. Charging pump
6. Relief valve

- The rear main pump serves 4-spool valve.
- The charging pump serves to operate the auto-decelerator cylinder (if equipped), boost the oil pressure in the control valve, and control the QLSS.