

DISASSEMBLY OF FINAL DRIVE ASSEMBLY

PC200-6, PC200LC-6, PC210LC-6, PC220LC-6

1. Draining oil

Remove drain plug and drain oil from final drive case.



Final drive case: Approx. 5.5 ℓ

2. Cover

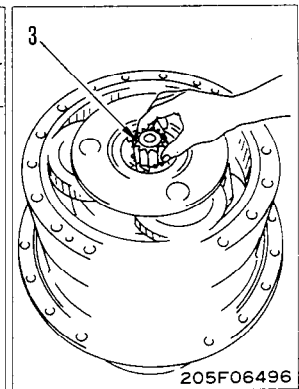
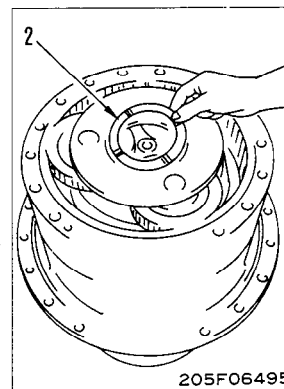
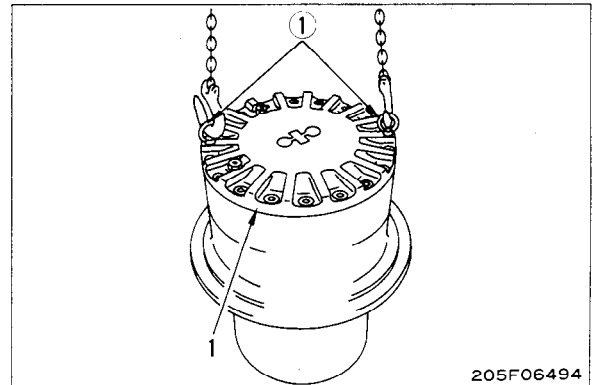
Remove mounting bolts, then remove cover (1) using eyebolts ①.

3. Spacer

Remove spacer (2).

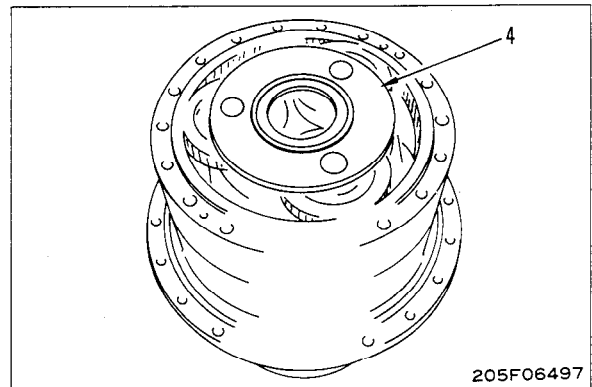
4. No. 1 sun gear shaft

Remove No. 1 sun gear shaft (3).



5. No. 1 carrier assembly

1) Remove No. 1 carrier assembly (4).

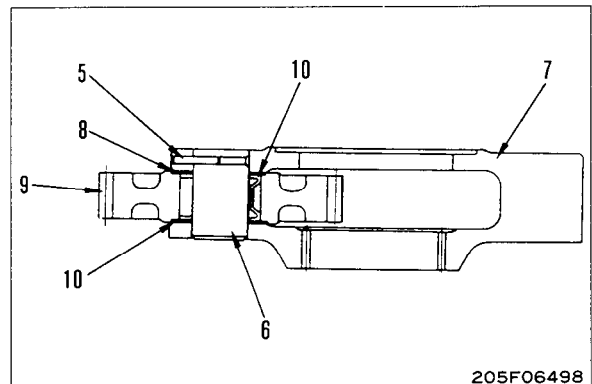


2) Disassemble No.1 carrier assembly as follows.

i) Push in pin (5), and pull out shaft (6) from carrier (7).

★ After removing the shaft, remove pin (5).

ii) Remove thrust washer (8), gear (9), bearing (10), and thrust washer (11).

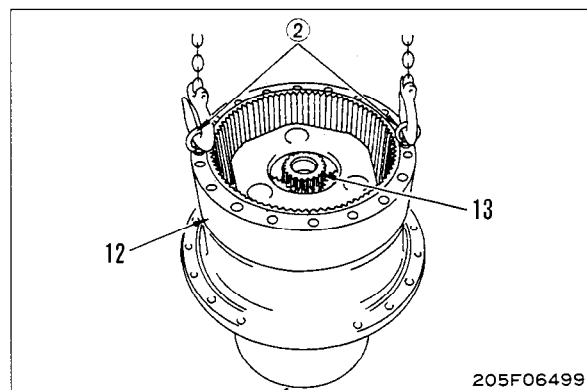


6. Ring gear

Using eyebolts ②, remove ring gear (12).

7. No. 2 sun gear

Remove No. 2 sun gear (13).

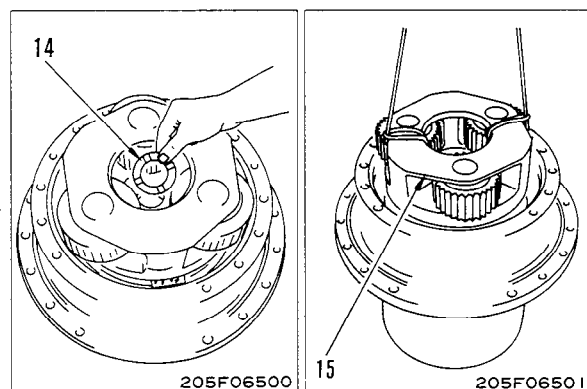


8. Thrust washer

Remove thrust washer (14).

9. No. 2 carrier assembly

1) Remove No. 2 carrier assembly (15).

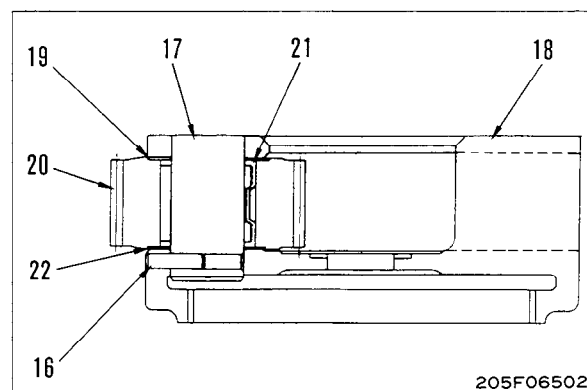


2) Disassemble No. 2 carrier assembly as follows.

i) Push in pin (16) and pull out shaft (17) from carrier (18).

★ After removing the shaft, remove pin (16).

ii) Remove thrust washer (19), gear (20), bearing (21), and thrust washer (22).



10. Nut

1) Remove lock plate (23).

2) Using tool G₁, remove nut (24).

