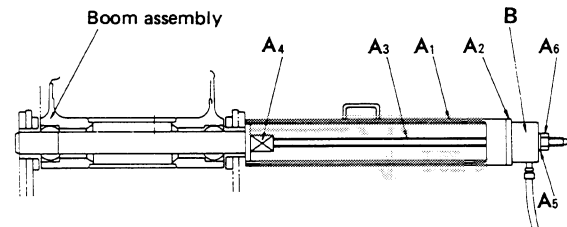
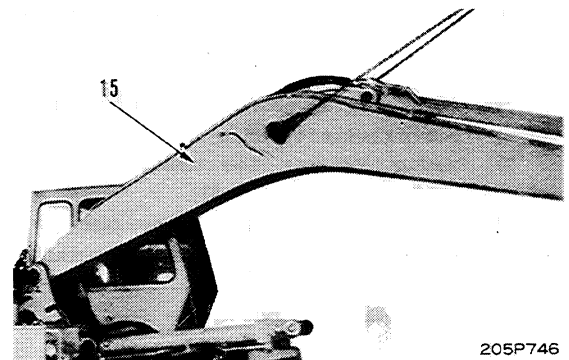
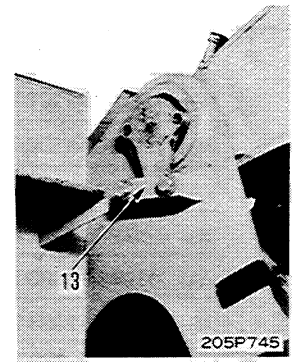


MOUNTING WORK EQUIPMENT ASSEMBLY

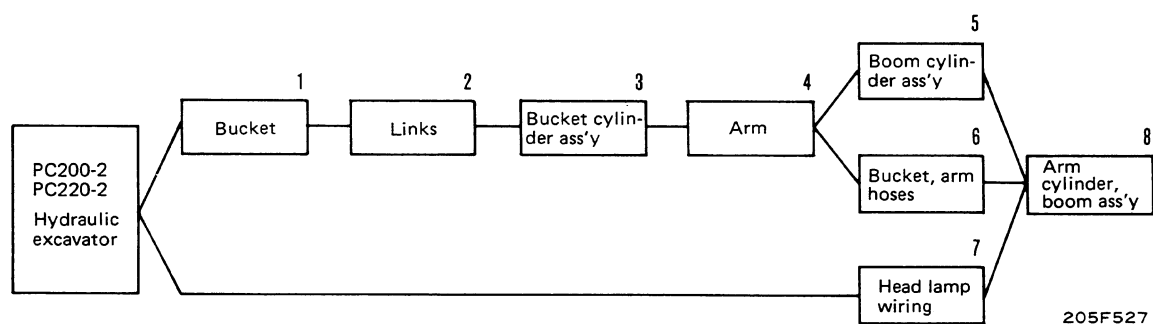
1. Raise work equipment assembly (15) and align hole of boom foot pin with revolving frame. Knock in pin and secure with lock plate (13).
2. Fit O-rings and connect arm cylinder hoses (12) and (11), and bucket cylinder hoses (10) and (9).
3. Connect head lamp wiring (8) at connector.
4. Raise boom cylinder assembly (6), start engine and extend piston rod. Align pin hole and push in pin (7).
★ Connect the other boom cylinder in the same way.
5. Install left and right plates (5) and (4), and secure with lock bolts (3) and (2).
6. Connect left and right greasing tubes (1).
- ★ Adjust the clearance between revolving frame and boom foot is under 1 mm.
- ★ After completing assembly, start the engine, operate the control levers several times, then check the level of the oil in the hydraulic tank.



205F236

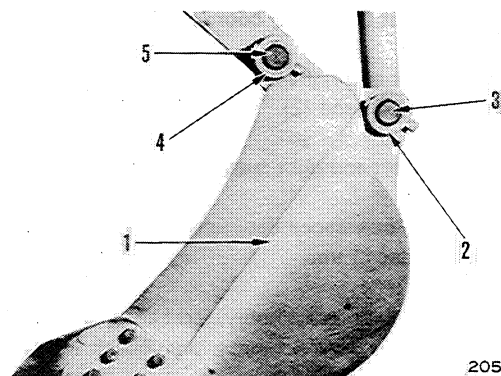


DISASSEMBLY OF WORK EQUIPMENT ASSEMBLY



Special tools

	Part number	Part name	Q'ty
A	796-900-1200	Remover	1
	A1 796-900-1210	• Sleeve	1
	A2 792-900-1520	• Plate	1
	A3 796-900-1230	• Screw	1
	A4 796-900-1240	• Adapter	1
	A5 01643-33080	• Washer	1
	A6 01803-13034	• Nut	1
B	790-101-3800	Puller (50 t)	1
C	790-101-1102	Pump	1

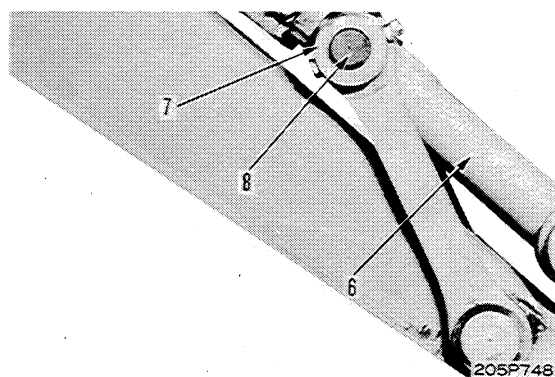


1. Bucket

- 1) Lower work equipment completely to ground with back of bucket (1) facing down.
- 2) Remove lock bolt, then remove plate (2) and pull out link connecting pin (3).
- 3) Remove lock bolt, then remove plate (4). Pull out link connecting pin (5) and remove bucket.



kg Bucket: 585 kg



2. Links

- 1) Lower tip of arm completely to the ground.
- 2) Start engine and retract piston rod fully.
- 3) Sling link (large) (6). Remove lock bolt, then remove plate (7). Pull out pin (8) and lift off link (large).



kg Link (large): 80 kg



Tie the rod with wire to prevent it from coming out.

- 4) Remove lock bolt, then remove plate. Pull out pin (9) and remove link (small) (10).

