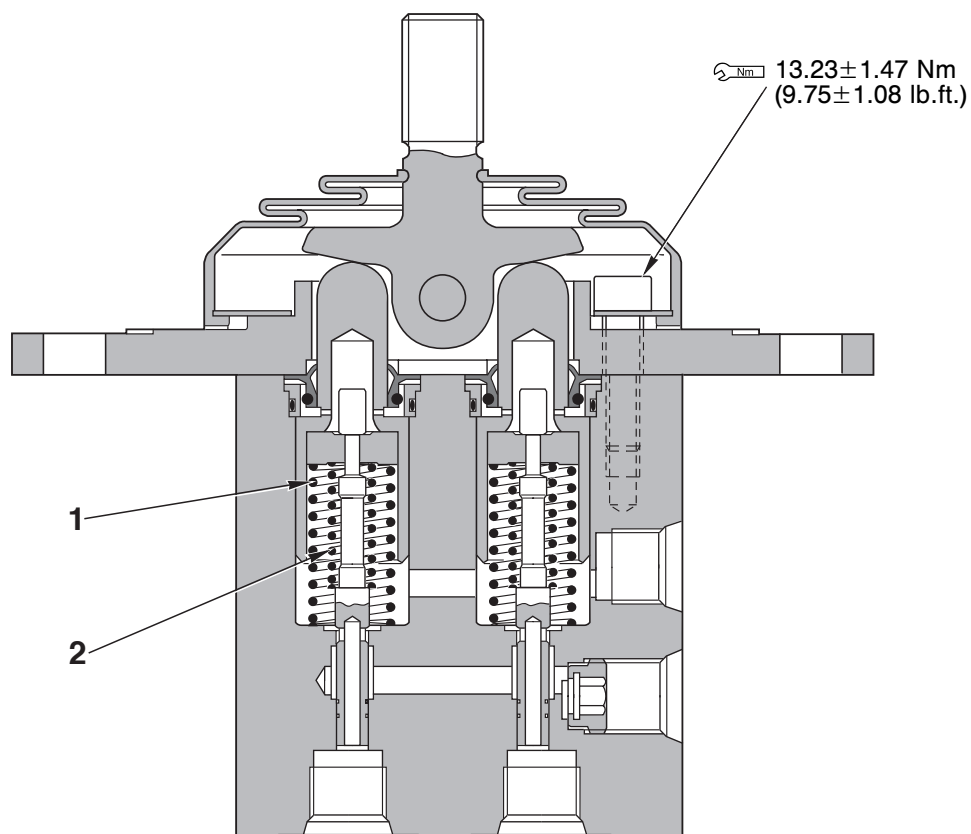


PPC VALVE

FOR HAMMER



RKP01710

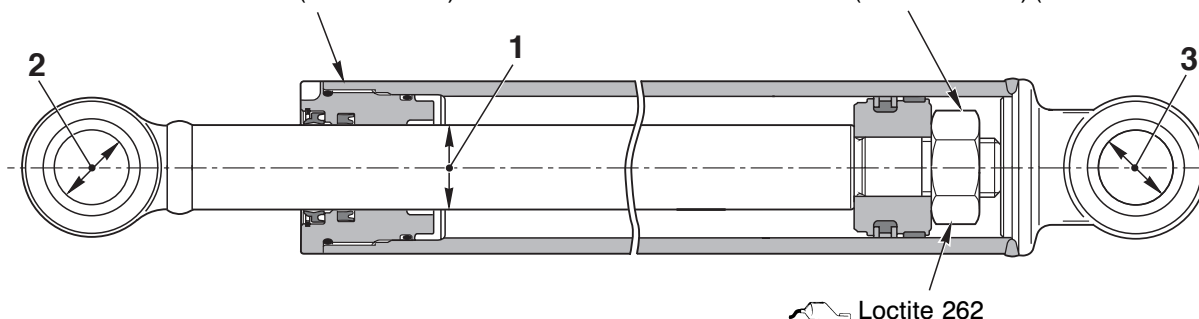
Unit: mm (in.)

No.	Check item	Criteria					Remedy
1	Centering spring	Standard size			Repair limit		Replace
		Free length x Ø.D.	Installed length	Installed load	Free length	Installed load	
		54.4x21.2 (2.14x0.83)	40.5 (1.59)	308.7 N (31.5 kg)	53.1 (2.09)	277.5 N (28.3 kg)	
2	Metering spring	25.9x11.0 (1.02x0.43)	25.0 (0.98)	24.5 N (2.5 kg)	25.8 (1.02)	21.6 N (2.2 kg)	

CYLINDER

★ The figure represent arm cylinder

<p> \hookrightarrow Nm Boom: 569±57 Nm (419±42 lb.ft.) Arm: 539±54 Nm (397±39.8 lb.ft.) Bucket: 441±44 Nm (325±32.4 lb.ft.) Boom swing: 588±59 Nm (433.3±43.5 lb.ft.) Blade: 539±54 Nm (397±39.8 lb.ft.) </p>	<p> \hookrightarrow Nm Boom: 785±78 Nm (578.5±57.5 lb.ft.) (Wrench size: 46 mm) Arm: 785±78 Nm (578.5±57.5 lb.ft.) (Wrench size: 46 mm) Bucket: 618±62 Nm (455.5±45.7 lb.ft.) (Wrench size: 41 mm) Boom swing: 912±91 Nm (672±67 lb.ft.) (Wrench size: 46 mm) Blade: 618±62 Nm (455.5±45.7 lb.ft.) (Wrench size: 41 mm) </p>
--	---



RKP01470

Unit: mm (in.)

No.	Check item	Criteria						Remedy
1	Clearance between piston rod and cylinder	Cylinder	Misura standard	Tolerance		Standard clearance	Limit clearance	Replace cylinder head
				Shaft	Hole			
		Boom	45 (1.773)	-0.025 (-0.001) -0.087 (-0.003)	+ 0.039 0 (+ 0.0015 0)	0.025 - 0.126 (0.001 - 0.005)	0.426 (0.0168)	
		Arm	40 (1.576)	-0.025 (-0.001) -0.087 (-0.003)	+ 0.039 0 (+ 0.0015 0)	0.025 - 0.126 (0.001 - 0.005)	0.426 (0.0168)	
		Bucket	35 (1.379)	-0.025 (-0.001) -0.087 (-0.003)	+ 0.039 0 (+ 0.0015 0)	0.025 - 0.126 (0.001 - 0.005)	0.426 (0.0168)	
		Boom swing	40 (1.576)	-0.025 (-0.001) -0.087 (-0.003)	+ 0.039 0 (+ 0.0015 0)	0.025 - 0.126 (0.001 - 0.005)	0.426 (0.0168)	
		Blade	35 (1.379)	-0.025 (-0.001) -0.087 (-0.003)	+ 0.039 0 (+ 0.0015 0)	0.025 - 0.126 (0.001 - 0.005)	0.426 (0.0168)	
2	Clearance between cylinder head bushing and pin	Boom	40 (1.576)	-0.025 (-0.001) -0.064 (-0.002)	+ 0.142 (+ 0.0056) + 0.080 (+ 0.0031)	0.105 - 0.206 (0.004 - 0.008)	1 (0.04)	Replace bushing
		Arm	35 (1.379)	-0.090 (-0.004) -0.130 (-0.005)	+ 0.142 (+ 0.0056) + 0.080 (+ 0.0031)	0.170 - 0.272 (0.007 - 0.010)	1 (0.04)	
		Bucket	35 (1.379)	-0.090 (-0.004) -0.130 (-0.005)	+ 0.142 (+ 0.0056) + 0.080 (+ 0.0031)	0.170 - 0.272 (0.007 - 0.010)	1 (0.04)	
		Boom swing	40 (1.576)	-0.010 (0.0004) -0.050 (-0.002)	+ 0.134 (+ 0.0053) + 0.072 (+ 0.0028)	0.082 - 0.184 (0.003 - 0.007)	1 (0.04)	
		Blade	35 (1.379)	-0.090 (-0.004) -0.130 (-0.005)	+ 0.142 (+ 0.0056) + 0.080 (+ 0.0031)	0.170 - 0.272 (0.007 - 0.010)	1 (0.04)	