

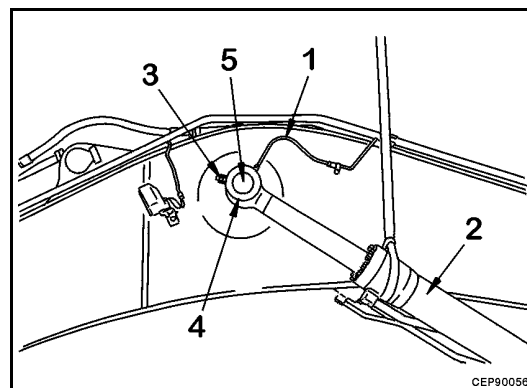
## CYLINDER

## BOOM

## REMOVAL



**WARNING!** Extend the arm and bucket fully, lower the work equipment completely to the ground and put the safety lock lever in the LOCK position.



1. Disconnect grease hose (1).
2. Sling boom cylinder (2) and remove lock bolt (3).

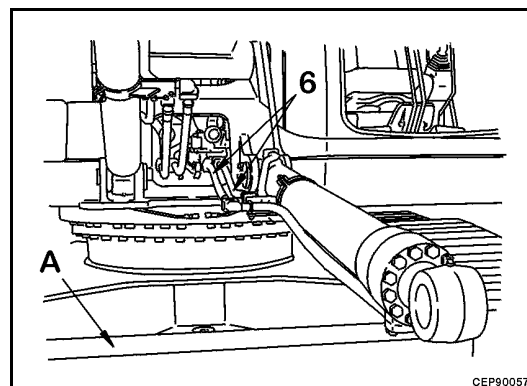
※1

3. Remove plate (4), then remove head pin (5).

※2

★ There are shims installed, so check the number and thickness and keep in a safe place.

4. Start engine and retract piston rod, then tie piston rod with wire to prevent it from coming out.
  - ★ Set stand A under the cylinder and adjust the position for slinging the cylinder.



**WARNING!** Release the remaining pressure in the hydraulic circuit. For details, see TESTING AND ADJUSTING.

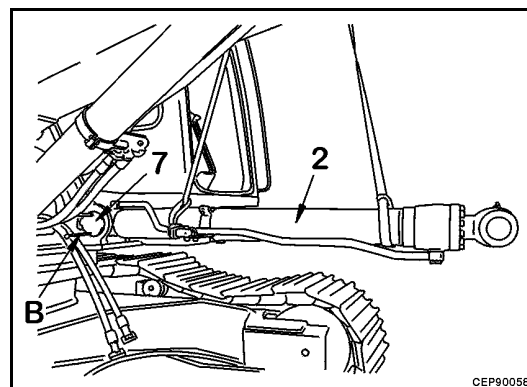
5. Disconnect hoses (6).
6. Remove plate, then using forcing screws (A), remove bottom pin (7) and remove boom cylinder (2).

※3

★ There are shims installed, so check the number and thickness and keep in a safe place.



Boom cylinder: 410 kg (904 lb)

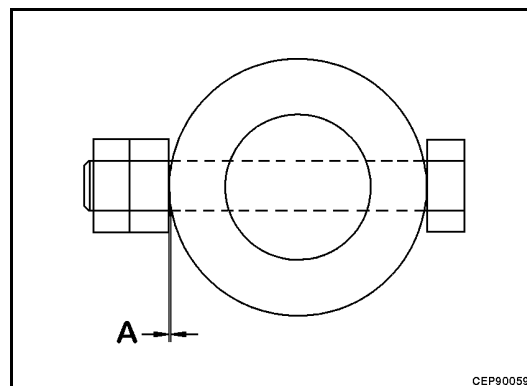


## INSTALLATION

- Carry out installation in the reverse order to removal.

## ❖ 1

- ★ When tightening the locknut, tighten so that the clearance **A** between the plate and nut is 0.5 to 1.5 mm.



CEP90059

## ❖ 2



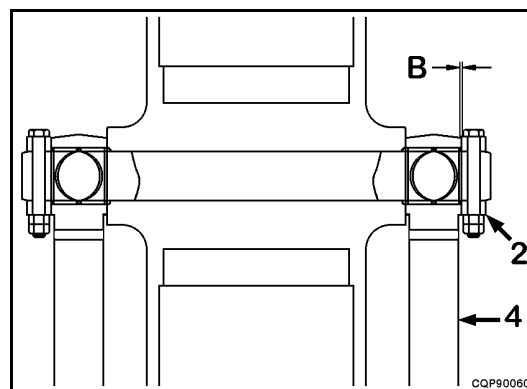
Bushing pre-lube: Anti-friction compound LM-P



Pin installed: Grease LM-G



**WARNING!** When aligning the position of the pin hole, never insert your fingers in the pin hole.



CQP90060

- ★ Adjust the shim thickness so that clearance **B** between the end face of the rod of cylinder (2) and plate (4) is less than 1.0 mm.

Standard shim thickness . . . . . 1.0 mm, 1.5 mm

## ❖ 3



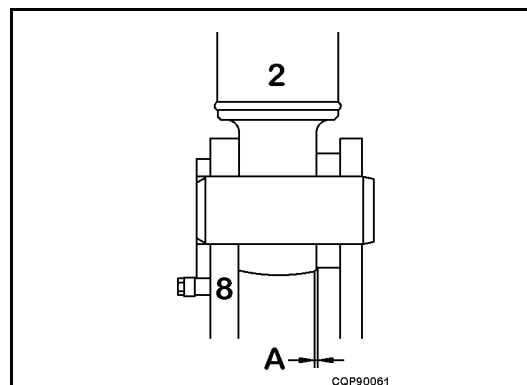
Bushing pre-lube: Anti-friction compound LM-P



Pin installed: Grease LM-G



**WARNING!** When aligning the position of the pin hole, never insert your fingers in the pin hole.



CQP90061

- ★ Adjust the shim thickness so that clearance **A** between the end face of the bottom of cylinder (2) and bracket (8) is less than 1.0 mm.

Standard shim thickness . . . . . 1.0 mm, 1.5 mm

- ★ Refill with oil [hydraulic tank] through the oil filler to the specified level. Run the engine to circulate the oil through the system. Then check the oil level again.
- ★ Bleed air from the hydraulic system. For details, see TESTING AND ADJUSTING.