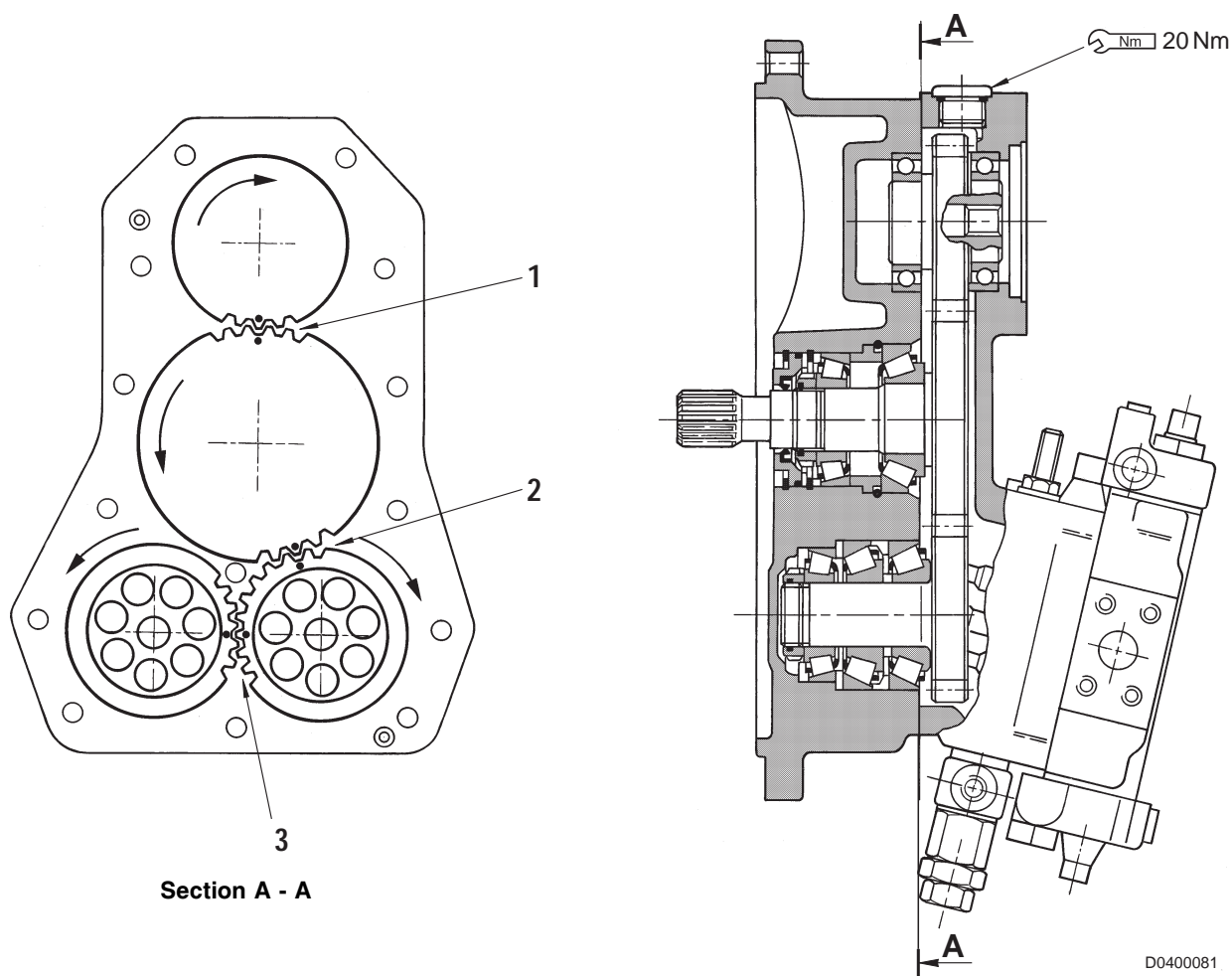


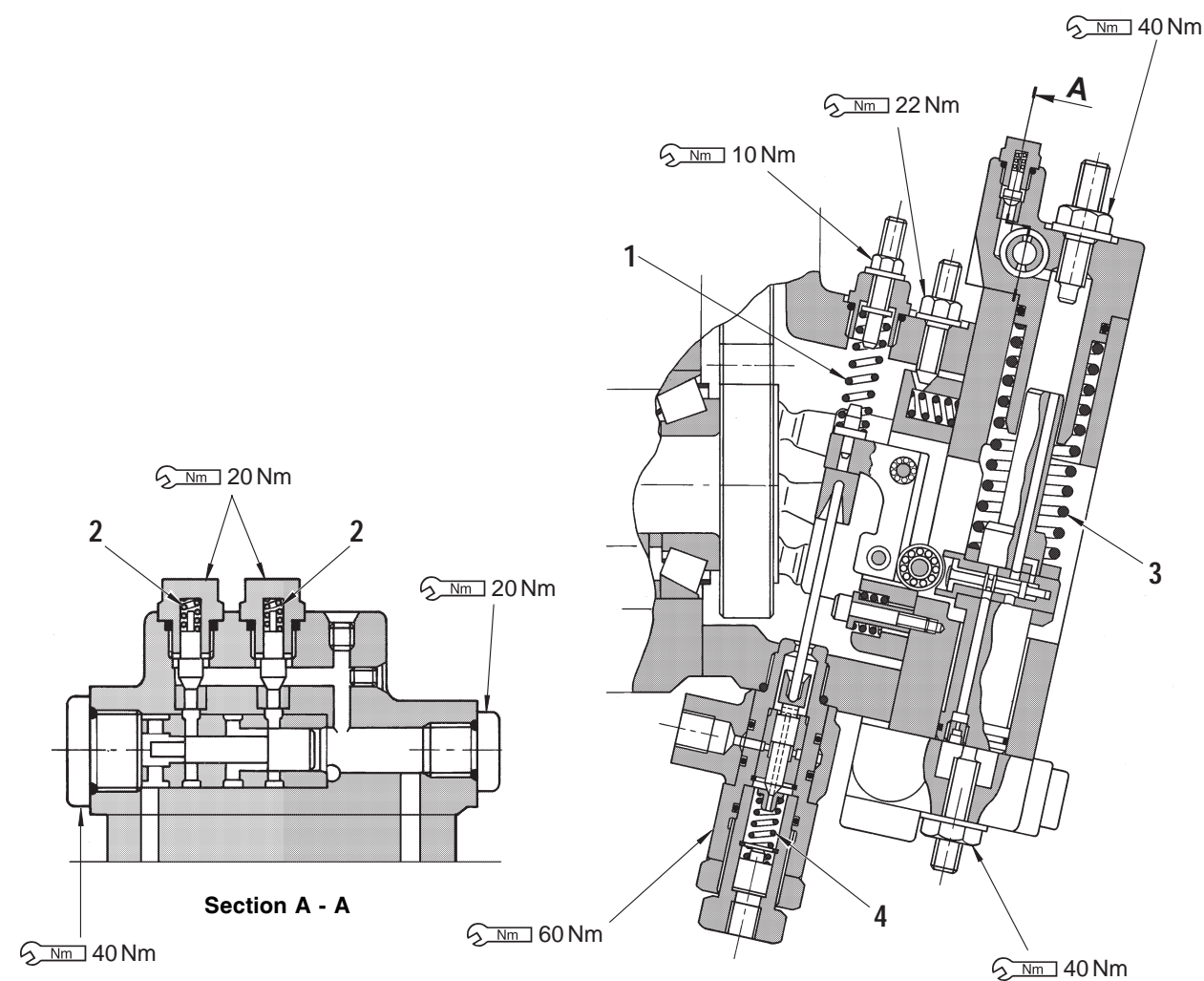
PUMP DRIVE



Unit: mm

N°	Check item	Criteria		Remedy
		Standard clearance	Clearance limit	
1	Backlash between inlet gear and auxliary pump gear	---	---	Replace
2	Backlash between inlet gear and No. 1 pump gear	---	---	Replace
3	Backlash between No. 1 pump gear and No. 2 pump gear	---	---	Replace

SUMMATION HORSEPOWER CONTROL - MODE-SYSTEM



D0400082

Unit: mm							
N°	Check item	Criteria					Remedy
1	Calibration spring	Standard size			Repair limit		Replace
		Free length	Installed length	Installed load	Free length	Installed load	
		42	33	366 N	41.1	339 N	
2	Check valve spring	8	5	15.6 N	7.5	13.9 N	Replace
3	Piston return spring	103.5	80	200 N	101	186 N	Replace
4	Mode-system spring	23	18	151 N	22.1	138.3	Replace