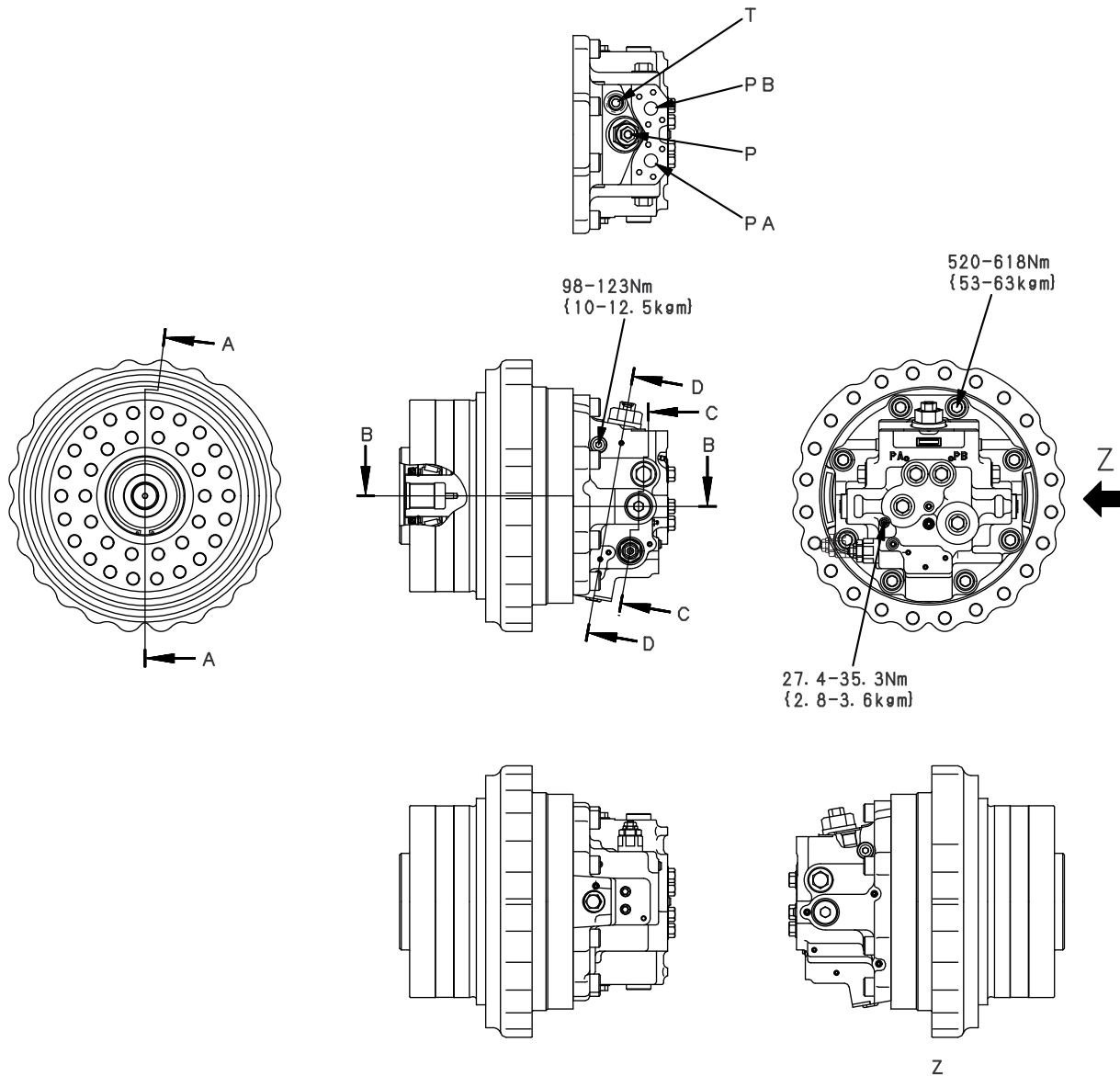


# Travel motor

Model: KMV335ADT



SJP09787

**P** : From travel speed solenoid valve  
**T** : To tank  
**PA** : From control valve  
**PB** : From control valve

## Specifications

Model: KMV335ADT

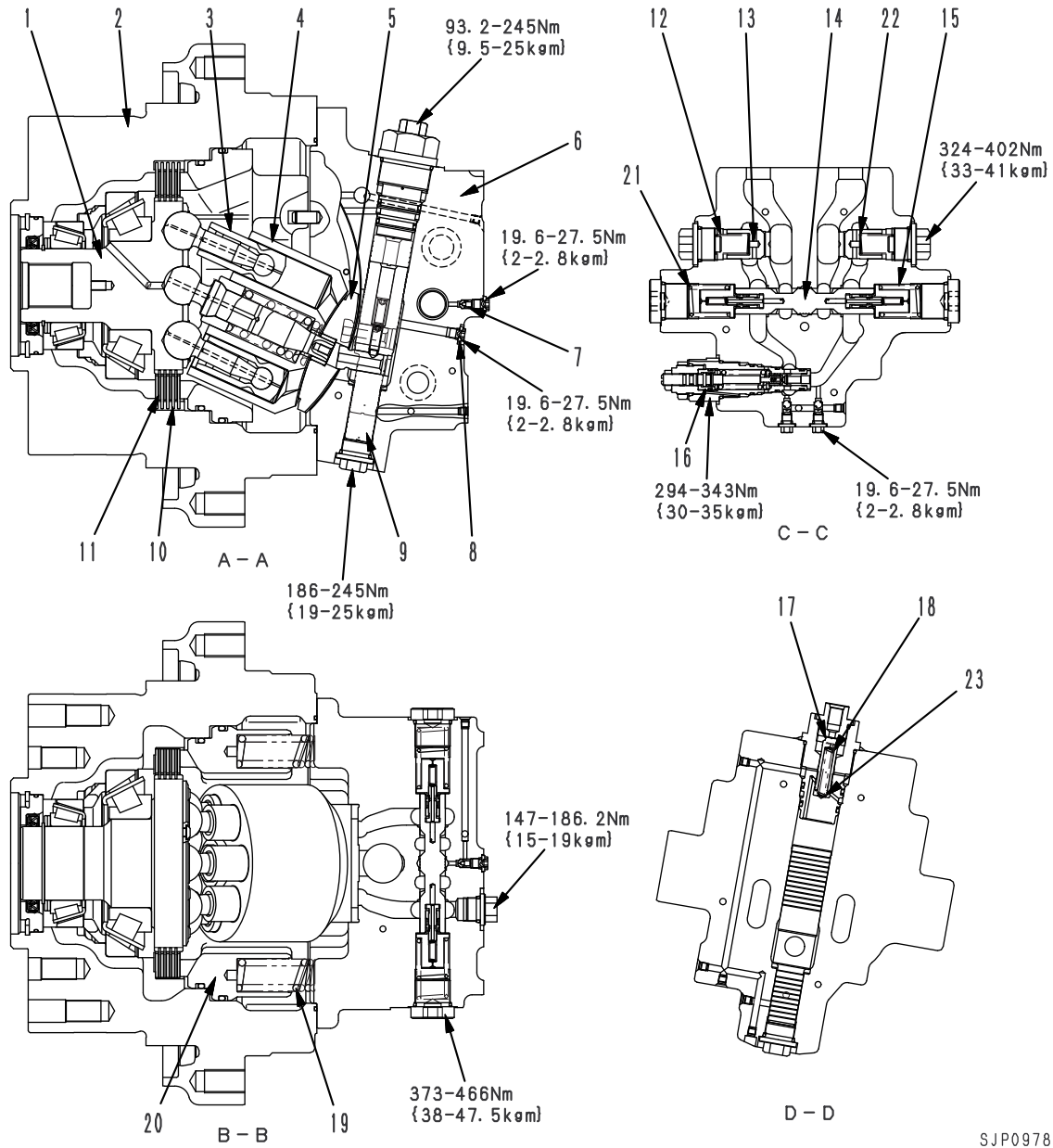
Theoretical delivery: Minimum 217 cc/rev  
Maximum 336 cc/rev

Brake release pressure:

$1.27 \pm 0.39 \text{ MPa}$  { $13.0 \pm 4.0 \text{ kg/cm}^2$ }

Travel speed selector pressure:

$0.93 \pm 0.25 \text{ MPa}$  { $9.50 \pm 2.50 \text{ kg/cm}^2$ }



SJP09788

- |                      |                          |                         |
|----------------------|--------------------------|-------------------------|
| 1. Output shaft      | 8. Plug                  | 15. Spool return spring |
| 2. Motor case        | 9. Regulator piston      | 16. Safety valve        |
| 3. Piston            | 10. Plate                | 17. Regulator valve     |
| 4. Cylinder block    | 11. Disc                 | 18. Spring              |
| 5. Valve plate       | 12. Check valve spring   | 19. Brake spring        |
| 6. End cover         | 13. Check valve          | 20. Brake piston        |
| 7. Slow return valve | 14. Counterbalance valve |                         |