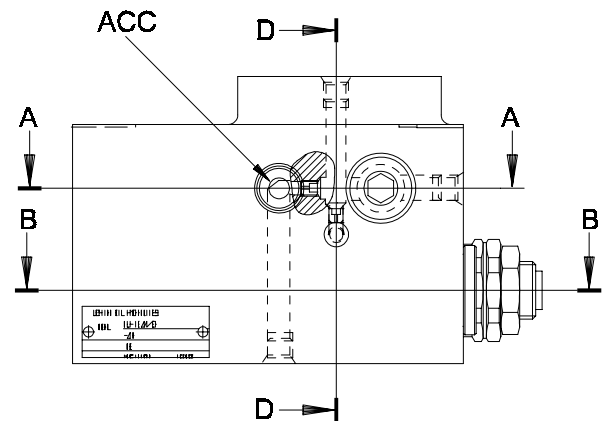
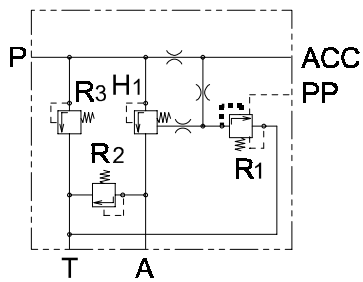
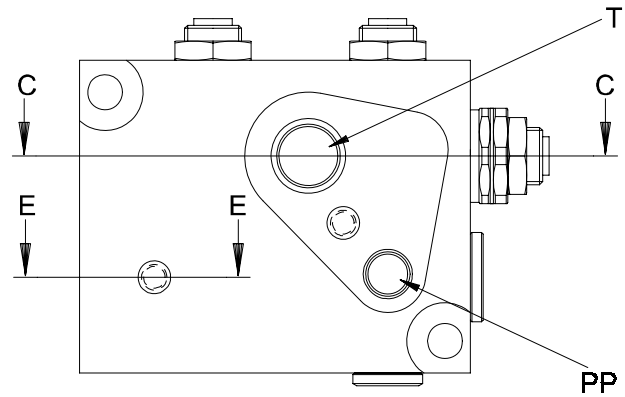
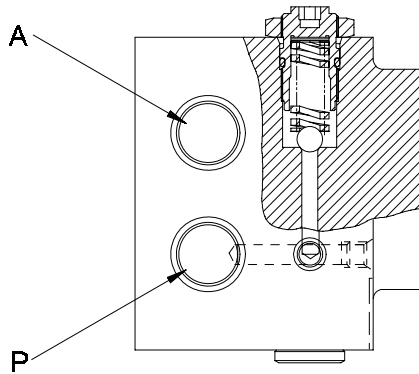


## CHARGE VALVE

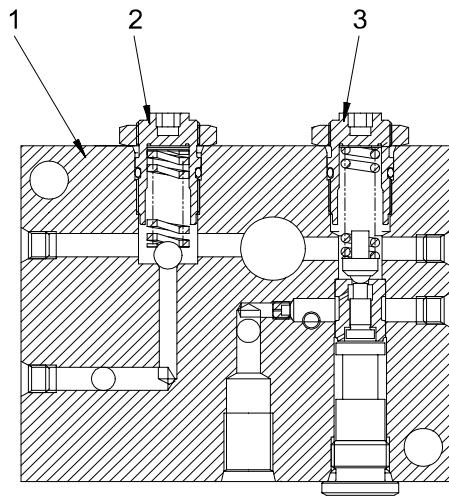


SDW00114

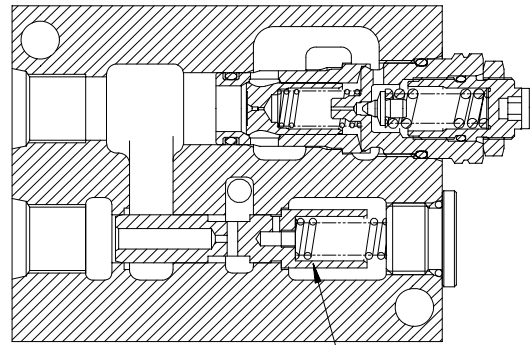
- A. To PPC valve
- ACC. To brake valve
- PP. To brake valve
- P. From pump
- T. Drain

### Function

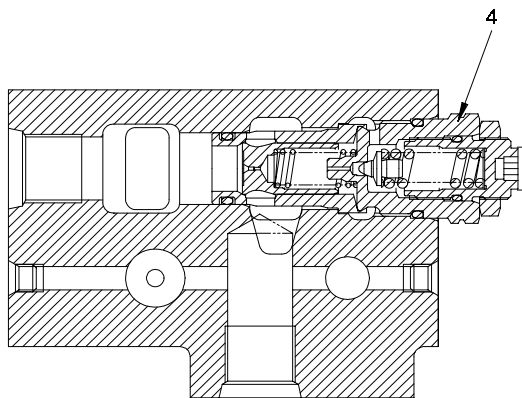
- The charge valve is actuated to maintain the oil pressure from the pump at the specified pressure and to store it in the accumulator.
- When the oil pressure reaches the specified pressure, the oil from the pump is connected to the drain circuit to reduce the load on the pump.



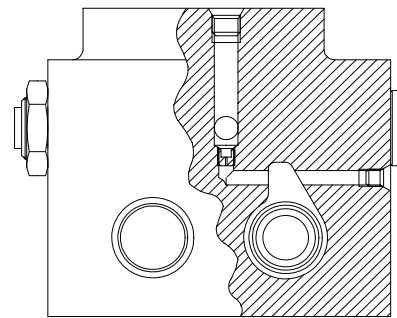
A - A



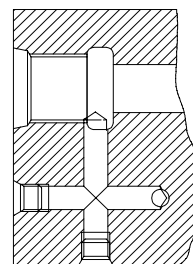
B - B



C - C



D - D



E - E

1. Valve body
2. Main relief valve (R<sub>3</sub>)
3. Relief valve (R<sub>1</sub>)
4. PPC relief valve (R<sub>2</sub>)
5. Relief valve (H<sub>1</sub>)

SDW00115