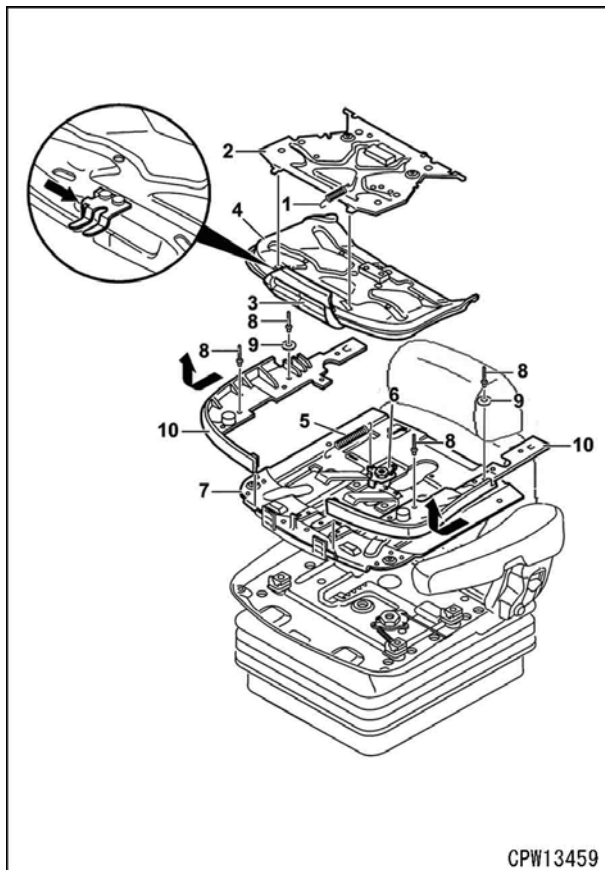


- 7) Install the switch (4) by the following procedure. (If equipped)
 - 1] Install the seat switch (4) and fix it with the rivet (3).
 - 2] Tilt the switch-plate (2) forwards and install it.
 - 3] Install the spring (1).
- 8) Install the seat pad by referring to "2. Removal and installation of seat pad and backrest upholstery".

8. Removal and installation of covers



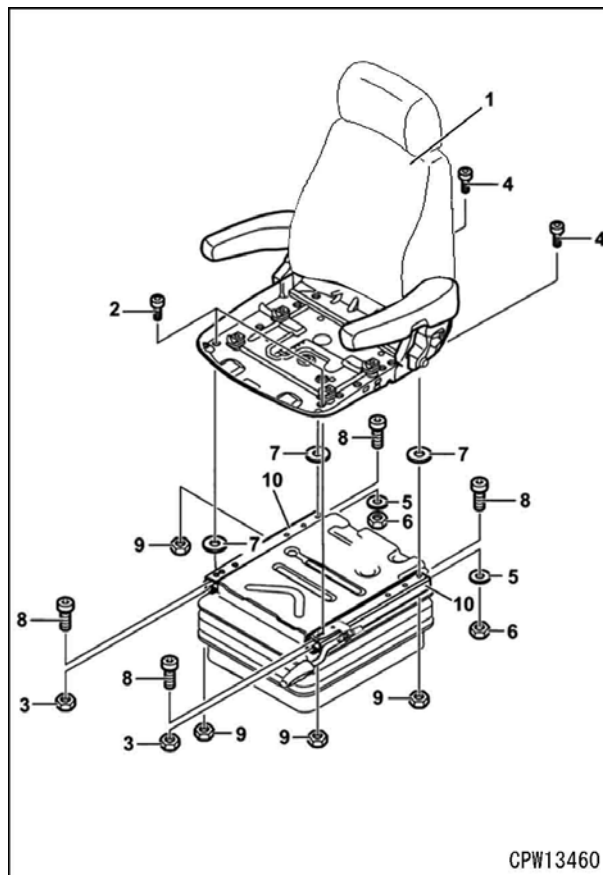
Removal

- 1) Remove the seat pad by referring to "2. Removal and installation of seat pad and backrest upholstery".
- 2) Remove spring(1) and switch-plate (2). (If equipped)
- 3) Remove the flexible support plate by following procedure.
 - 1] Press the spring sheet inwards (arrow), operate the lever for seat angle adjustment (3).
 - 2] Pull the flexible support plate (4) to backwards and remove it.
- 4) Remove the spring (5).
- 5) Turn the lever (6) clockwise until it snaps-in, pull the plate (7) to the very front and remove it.
- 6) Drill off the rivet (8) and remove the washers (9).
- 7) Unhook the covers (10) by pulling them forwards and remove them in an upward direction.

Installation

- 1) Install the covers (10) of right and left.
- 2) Install the washers (9) and fix it with the rivet (8).
- 3) Turn the lever (6) clockwise until it snaps-in, then install the plate (7).
- 4) Remove the spring (5) (see 7. Disassembly and assembly of seat angle and seat depth adjuster).
- 5) Install the flexible support plate (4) (see 7. Disassembly and assembly of seat angle and seat depth adjuster).
- 6) Install spring (1) and switch-plate (2) (see 7. Disassembly and assembly of seat angle and seat depth adjuster). (If equipped)
- 7) Install the seat pad by referring to "2. Removal and installation of seat pad and backrest upholstery".

9. Removal and installation of slide rails



CPW13460

Removal

- 1) Remove the seat pad by referring to "2. Removal and installation of seat pad and backrest upholstery".
- 2) Push the seat top assembly (1) as far back as possible.
- 3) Unscrew the hexagon socket screws (2) and remove the nuts (3).
- 4) Push the seat top assembly (1) as far forward as possible.
- 5) Unscrew the hexagon socket screws (4), remove the washers (5) and nuts (6).
- 6) Remove the seat top assembly (1) and remove the washers (7).
- 7) Disconnect the bellows from the upper part of the suspension system and lay it down.
- 8) Unscrew the hexagon socket screws (8) and remove the nuts (9).
- 9) Remove the slide rails (10).

Installation

- 1) Install the slide rails (10).
- 2) Put the nuts (9) and tighten the hexagon socket screws (8).
 - ★ Replace the hexagon socket screws (8) with new ones.
 - Hexagon socket screws: **25 Nm {2.6 kgm}**
- 3) Install the bellows to the upper part of the suspension system.
- 4) Put the washers (7) and install the seat top assembly (1) and remove.
- 5) Put the washers (5) and nuts (6), then tighten the hexagon socket screws (4).
 - ★ Replace the hexagon socket screws (4) with new ones.
 - Hexagon socket screws: **25 Nm {2.6 kgm}**
- 6) Push the seat top assembly (1) as far forward as possible.
- 7) Put the nuts (3) and tighten the hexagon socket screws (2).
 - ★ Replace the hexagon socket screws (2) with new ones.
 - Hexagon socket screws: **25 Nm {2.6 kgm}**
- 8) Push the seat top assembly (1) as far back as possible.
- 9) Install the seat pad by referring to "2. Removal and installation of seat pad and backrest upholstery".