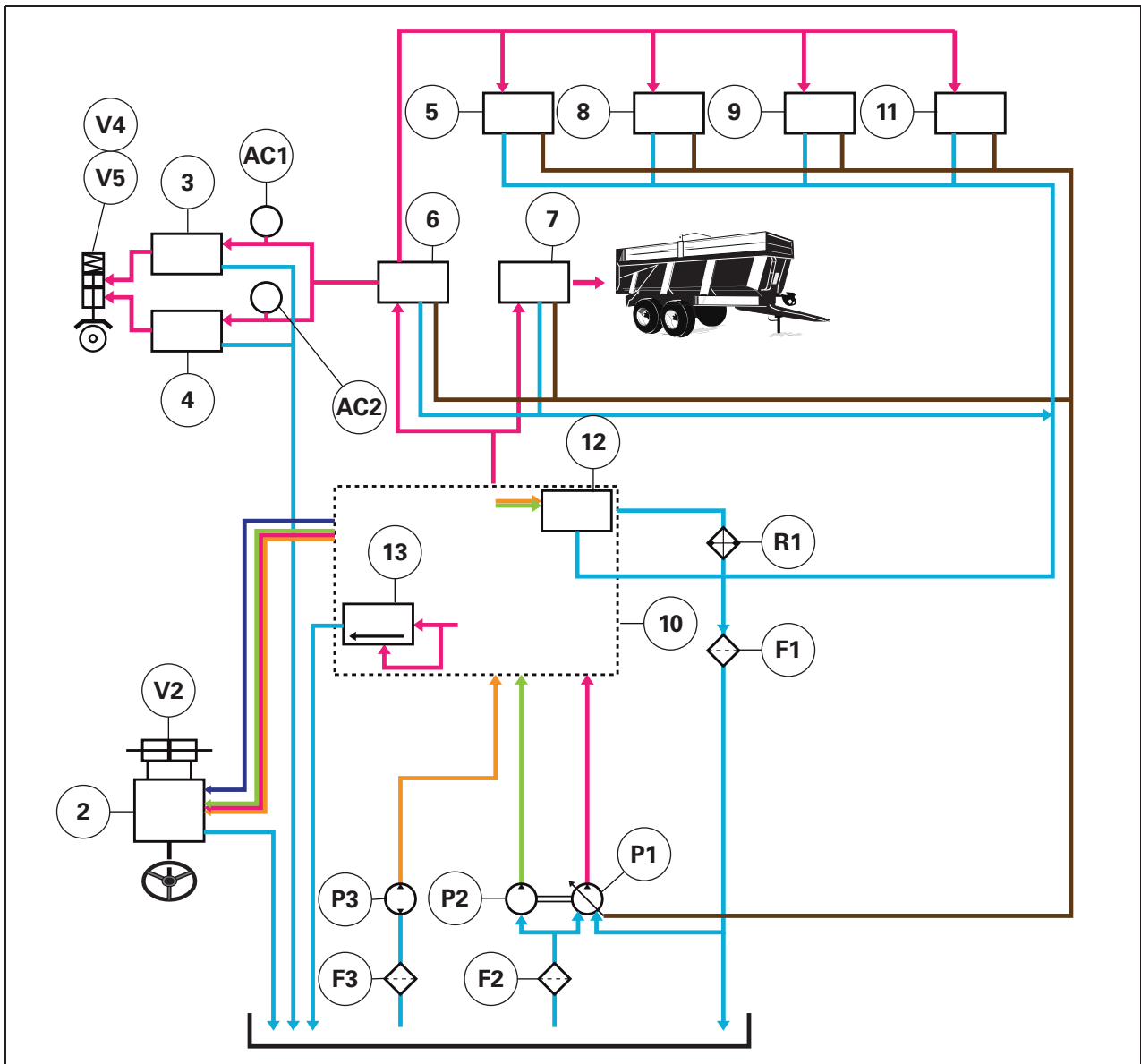


C. Schematic diagram



1011219

Fig. 4

- Return-suction
- Steering pump pressure
- Steering standby pump pressure
- Variable displacement pump pressure
- Steering LS
- Variable displacement LS pump
- (P1) Variable displacement pump
- (P2) Steering pump
- (P3) Steering standby pump
- (F1) Tank return filter
- (F2) Suction strainer
- (F3) Standby pump suction strainer
- (R1) Oil cooler
- (V2) Steering ram
- (V4) Right-hand brake fitting
- (V5) Left-hand brake fitting
- (Ac1) ParkLock accumulator

- (Ac2) Main brake accumulator
- (2) Steering spool valve
- (3) ParkLock control unit
- (4) Brake master cylinder
- (5) Suspended front axle unit
- (6) Main brake unit
- (7) Trailer brake unit
- (8) Cab suspension unit
- (9) Auto-hitch unit
- (10) Priority block
- (11) Auxiliary spool valve + linkage spool valves assembly
- (12) Thermo valve
- (13) Pressure relief valve