

1	Fuel pump unit connector
2	Quick release connector
(See <a href="#">QUICK RELEASE CONNECTOR REMOVAL/INSTALLATION [MZR 2.5]</a> .)	
3	O-ring
4	Fuel pump unit

**Fig. 24: Identifying Fuel Pump Unit Components With Torque Specifications**  
 Courtesy of MAZDA MOTORS CORP.

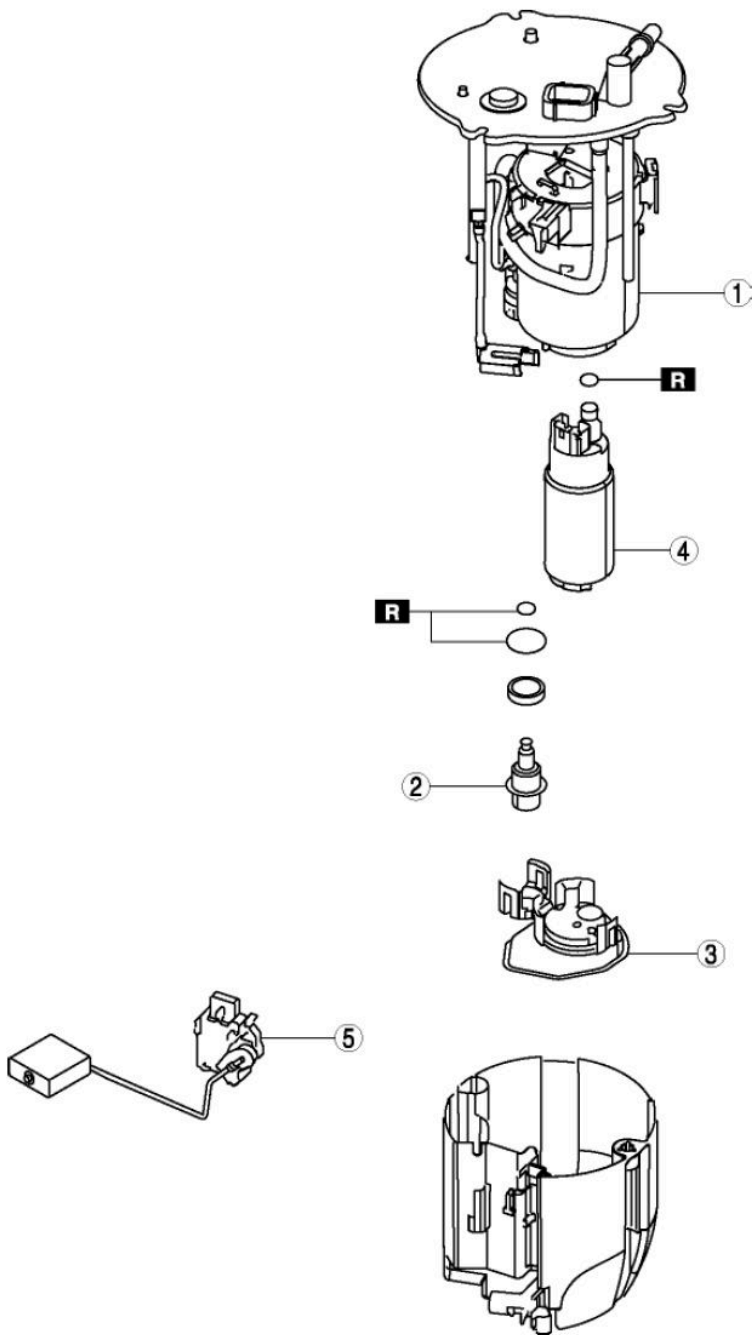
12. Install in the reverse order of removal.
13. Complete the "AFTER SERVICE PRECAUTION". (See [AFTER SERVICE PRECAUTION \[MZR 2.5\]](#).)

## FUEL PUMP UNIT DISASSEMBLY/ASSEMBLY [MZR 2.5]

1. Remove the fuel pump unit. (See [FUEL PUMP UNIT REMOVAL/INSTALLATION \[MZR 2.5\]](#).)
2. Disassemble in the order indicated in the table.
3. Assemble in the reverse order of disassembly.

## 2014 Mazda 5 Touring

2014 ENGINE Fuel System [MZR 2.5] - Mazda 5



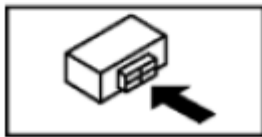
1	Fuel filter (high-pressure)
2	Pressure regulator
3	Fuel filter (low-pressure)
4	Fuel pump
5	Fuel gauge sender unit

**Fig. 25: Exploded View Of Fuel Pump Unit**  
Courtesy of MAZDA MOTORS CORP.

### FUEL PUMP UNIT INSPECTION [MZR 2.5]

## CONTINUITY INSPECTION

1. Remove the battery cover. (See **BATTERY REMOVAL/INSTALLATION [MZR 2.5]** .)
2. Disconnect the negative battery cable. (See **BATTERY REMOVAL/INSTALLATION [MZR 2.5]** .)
3. Disconnect the fuel pump unit connector.
4. Inspect for continuity between fuel pump unit terminals B-D.



**Fig. 26: Identifying Fuel Pump Unit Connector Terminals**  
Courtesy of MAZDA MOTORS CORP.

- If there is no continuity, replace the fuel pump unit. (See **FUEL PUMP UNIT REMOVAL/INSTALLATION [MZR 2.5]**.)

## QUICK RELEASE CONNECTOR REMOVAL/INSTALLATION [MZR 2.5]

### WARNING:

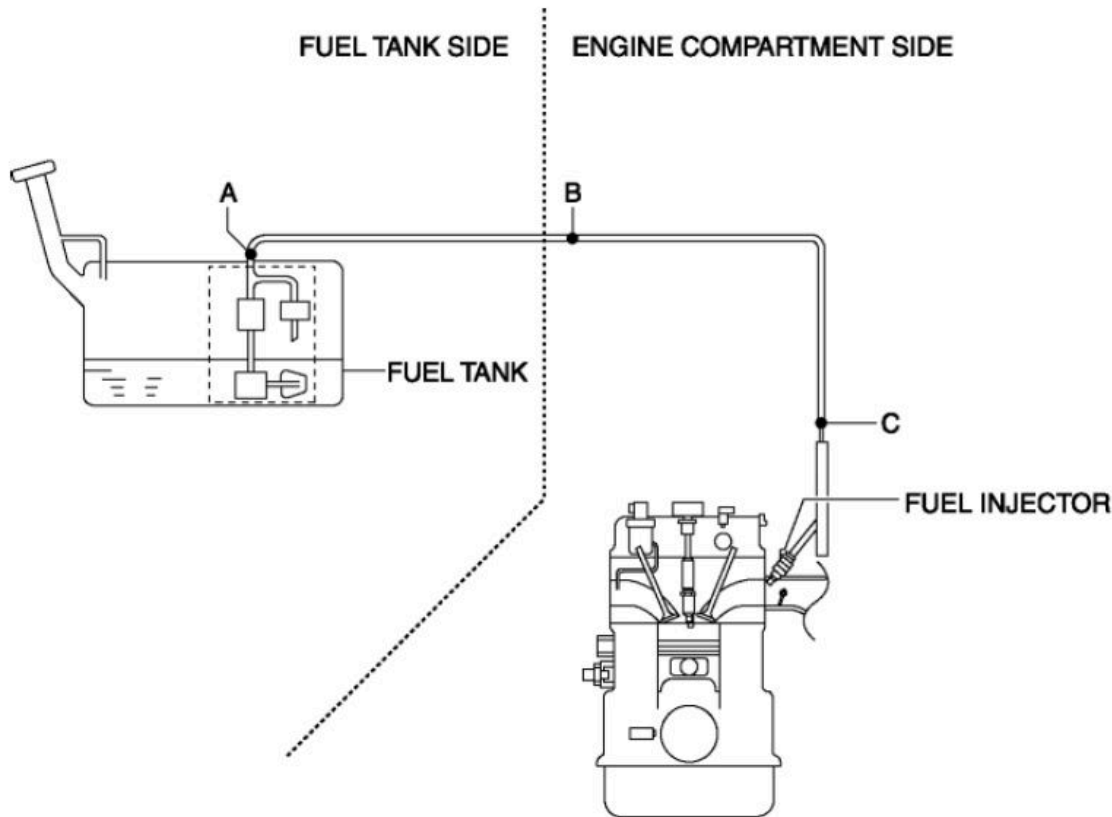
- Fuel is very flammable liquid. If fuel spills or leaks from the pressurized fuel system, it will cause serious injury or death and facility breakage. Fuel can also irritate skin and eyes. To prevent this, always complete the "[Fuel Line Safety Procedure](#)", while referring to the "BEFORE SERVICE PRECAUTION".
- A person charged with static electricity could cause a fire or explosion, resulting in death or serious injury. Before performing work on the fuel system, discharge static electricity by touching the vehicle body.

### CAUTION:

- Disconnecting/connecting the quick release connector without cleaning it may cause damage to the fuel pipe and quick release connector. Always clean the quick release connector joint area before disconnecting/connecting using a cloth or soft brush, and make sure that it is free of foreign material.

## QUICK RELEASE CONNECTOR TYPE

**CAUTION:** • Verify the type and location, and install/remove properly.

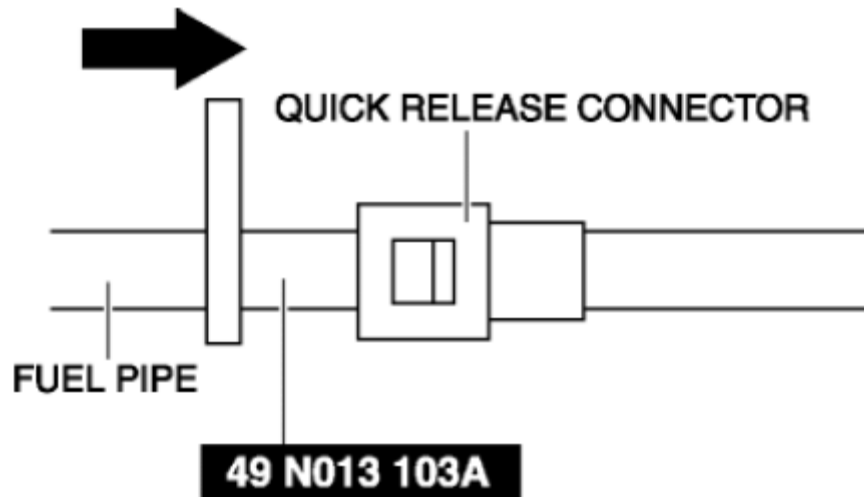


**Fig. 27: Identifying Fuel Pipe And Quick Release Connector**  
Courtesy of MAZDA MOTORS CORP.

## TYPE A REMOVAL

**CAUTION:** • Be careful not to damage the fuel pipe when unlocking the retainer.

1. Complete the "BEFORE SERVICE PRECAUTION". (See **BEFORE SERVICE PRECAUTION [MZR 2.5]**.)
2. Insert the SST into the quick release connector.

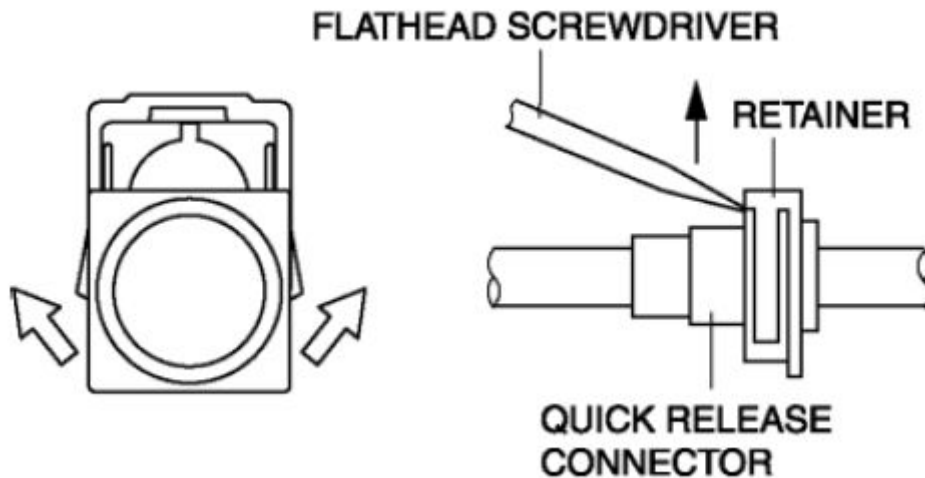


**Fig. 28: Inserting SST Into Quick Release Connector**  
 Courtesy of MAZDA MOTORS CORP.

3. Pull out the fuel hose straight from the fuel pipe and disconnect it.
4. Cover the disconnected quick release connector and fuel pipe with vinyl sheeting or a similar material to prevent it from getting scratched or dirty.

#### **TYPE B REMOVAL**

1. Complete the "BEFORE SERVICE PRECAUTION". (See **BEFORE SERVICE PRECAUTION [MZR 2.5]**.)
2. Move the retainer upward using a small flathead screwdriver or a similar tool.



**Fig. 29: Moving Retainer Upward Using Small Flathead Screwdriver**  
 Courtesy of MAZDA MOTORS CORP.

3. Pull out the fuel hose straight from the fuel pipe and disconnect it.

4. Cover the disconnected quick release connector and fuel pipe with vinyl sheeting or a similar material to prevent it from getting scratched or dirty.

### TYPE C REMOVAL

1. Complete the "BEFORE SERVICE PRECAUTION". (See **BEFORE SERVICE PRECAUTION [MZR 2.5].**)

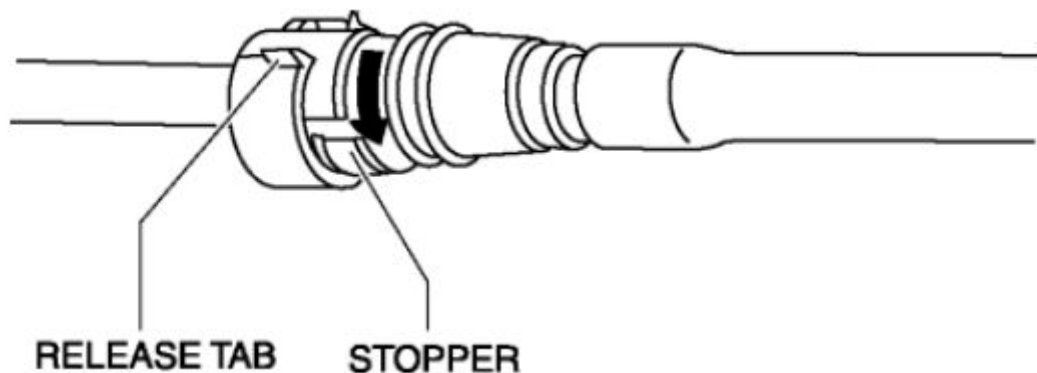
**CAUTION:**

- The quick release connector may be damaged if the release tab is bent excessively. Do not expand the release tab over the stopper.

**NOTE:**

- The fuel hose can be removed by pushing it to the fuel pipe side to release the lock.

2. Rotate the release tab on the quick release connector to the stopper position.



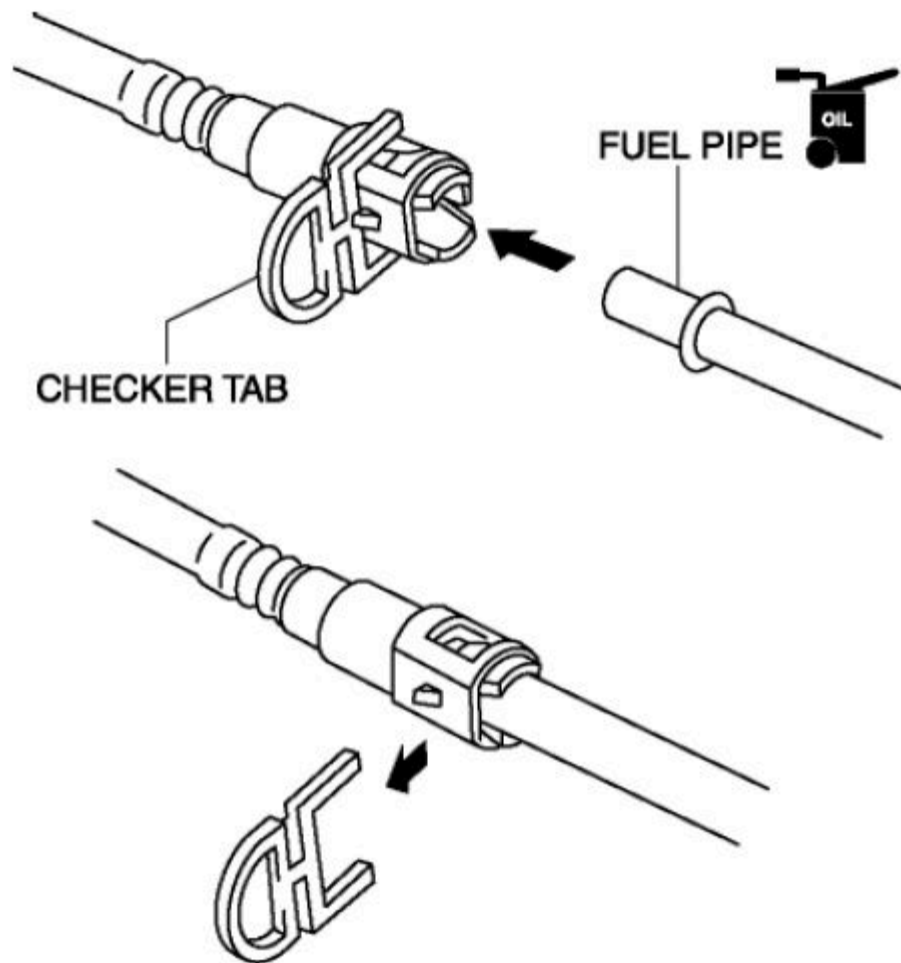
**Fig. 30: Rotating Release Tab On Quick Release Connector To Stopper Position**  
Courtesy of MAZDA MOTORS CORP.

3. Pull out the fuel hose straight from the fuel pipe and disconnect it.
4. Cover the disconnected quick release connector and fuel pipe with vinyl sheeting or a similar material to prevent it from getting scratched or dirty.

### TYPE A INSTALLATION

**NOTE:**

- If the quick release connector O-ring is damaged or has slipped, replace the fuel hose.
- A checker tab is integrated with the quick release connector for new fuel hoses. Remove the checker tab from the quick release connector after the connector is completely engaged with the fuel pipe.



**Fig. 31: Removing Checker Tab From Quick Release Connector With Fuel Pipe**  
 Courtesy of MAZDA MOTORS CORP.

1. Inspect the fuel hose and fuel pipe sealing surface for damage and deformation.
  - If there is any malfunction, replace it with a new one.
2. Apply a small amount of clean engine oil to the sealing surface of the fuel pipe.
3. Install a new retainer to the quick release connector.
4. Reconnect the fuel hose straight to the fuel pipe until a click is heard.
5. Lightly pull and push the quick release connector a few times by hand, and then verify that it is connected securely.
6. Complete the "AFTER SERVICE PRECAUTION". (See **AFTER SERVICE PRECAUTION [MZR 2.5]**.)

#### TYPE B INSTALLATION

#### NOTE:

- If the quick release connector O-ring is damaged or has slipped, replace