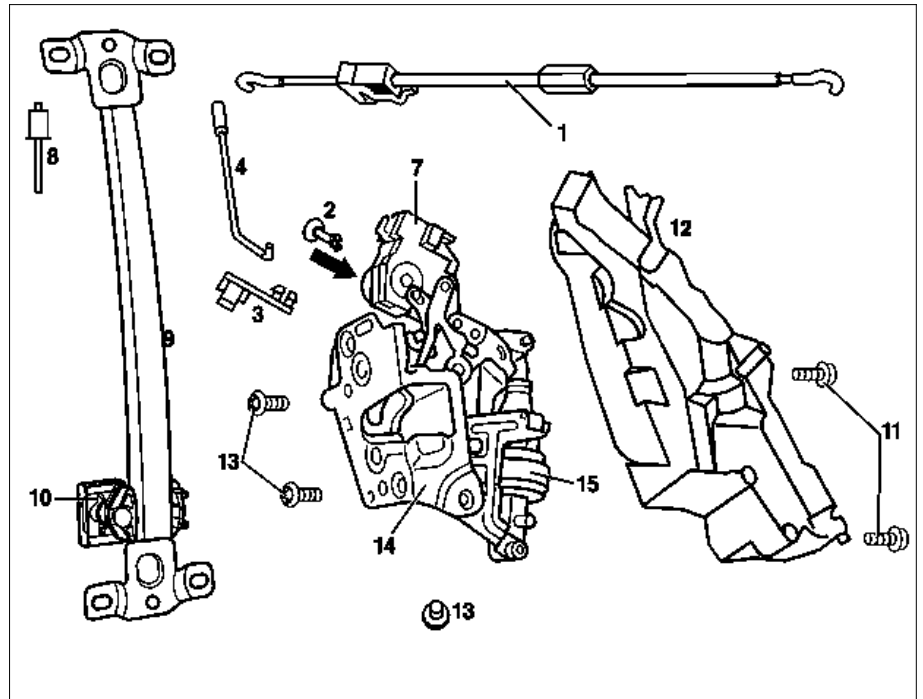


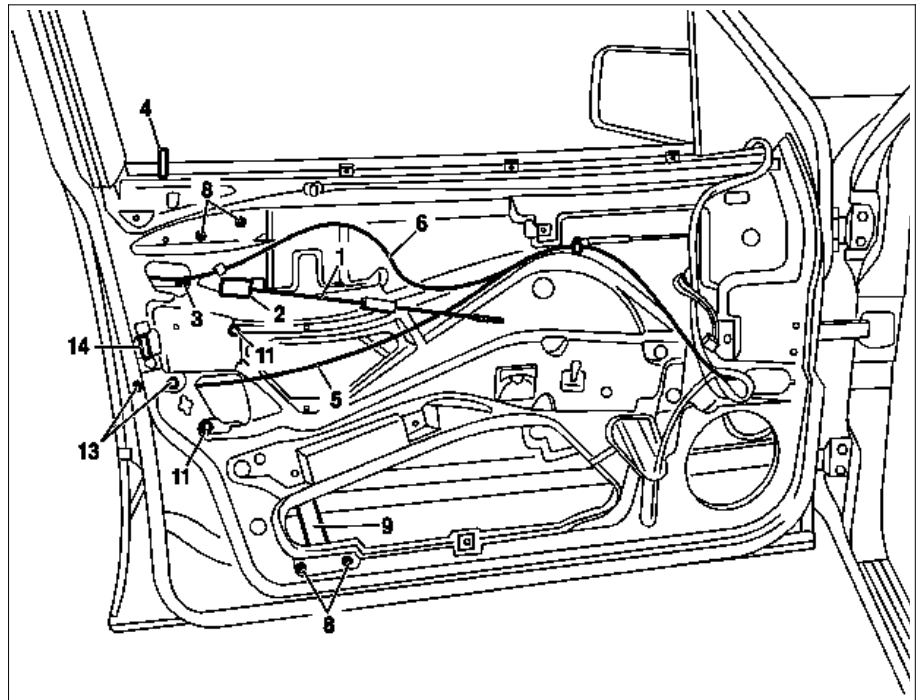
## MODEL 210

- 1 Bowden cable
- 2 Bracket
- 3 Retainer
- 4 Retaining rod
- 7 Lock switch cover (with IRCL)
- 8 Blind rivet, 4.8 mm
- 9 Guide rail
- 10 Sliding block
- 11 Lock cover bolts
- 12 Lock cover
- 13 Door lock bolts
- 14 Door lock
- 15 CL element



P72.10-0238-06

- 1 Bowden cable
- 2 Bracket
- 3 Retainer
- 4 Retaining rod
- 5 CL line
- 6 IRCL function indicator line
- 8 Blind rivet, 4.8 mm
- 9 Guide rail
- 11 Lock cover bolts
- 13 Door lock bolts
- 14 Door lock



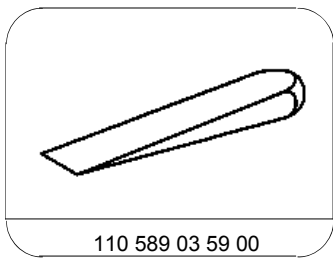
P72.10-0239-06

	Removing		
1	Remove front door lining		AR72.10-P-1000F
2	Remove outside door handle on front door		AR72.10-P-2400F
3	Pull foil off of inner door panel		
4	Remove bearing bracket		
5	Remove front door crank window	Partially remove crank window, only extend slide shoes	AR72.10-P-1900E
6	Guide crank window into window guide rail and slide upward		*110589035900
7	Unclip bracket (2) from inner door panel and unhook Bowden cable (1) from door lock and remove		
8	Open retainer (3) and remove locking linkage (4)		

9	Press CL line (5) off of door lock CL element		
10	Drill out blind rivets (8) after knocking rivet shaft back with center punch	<b>i</b> To drill out: 4.8 mm bit Ø	
11	Remove guide rail (9) above assembly opening		
12	Remove bolt (11)		
13	Unclip lock cover from door lock and inner door panel and remove		
14	Remove bolt (13)		
15	Remove door lock (14) above access opening	<b>i</b> Pull out with IRCL function indicator line (6)	
<b>⊗</b>	<b>Install</b>		
16	Insert door lock above access opening	<b>i</b> Install with IRCL function indicator line (6) and route to door handle	
17	Screw in and tighten screws/bolts (13)	<b>Nm</b> <b>i</b> <b>Installation:</b> When installing first tighten front bolts.	*BA72.10-P-1006-01A
18	Insert lock cover into door lock and inner door panel		
19	Install bolts (11) for lock cover		
20	Insert guide rail (9) Abu access opening		
21	Fasten guide rail (9) to inner door panel with 4.8 mm blind rivets (8)		
22	Install CL line (5) on door lock CL element		
23	Install locking bar (4) on door lock and close retainer (3)		
24	Hook Bowden cable (1) into door lock and clip bracket (2) into inner door panel		
25	Slide crank window downward, guide into slide shoes and screw bolt into slide shoes		
26	Adjust front door crank window		AR72.10-P-1950E
27	Install bearing bracket		
28	Install outside door handle on front door	<b>i</b> Adjust clearance	AR72.10-P-2400F
29	Carry out function check		
30	Glue foil to inner door panel		
31	Install door lining in front door		AR72.10-P-1000F

**Nm** Front door

Number	Designation	Model 210	
BA72.10-P-1006-01A	Screw at door lock	Nm	8



110 589 03 59 00

Mounting wedge