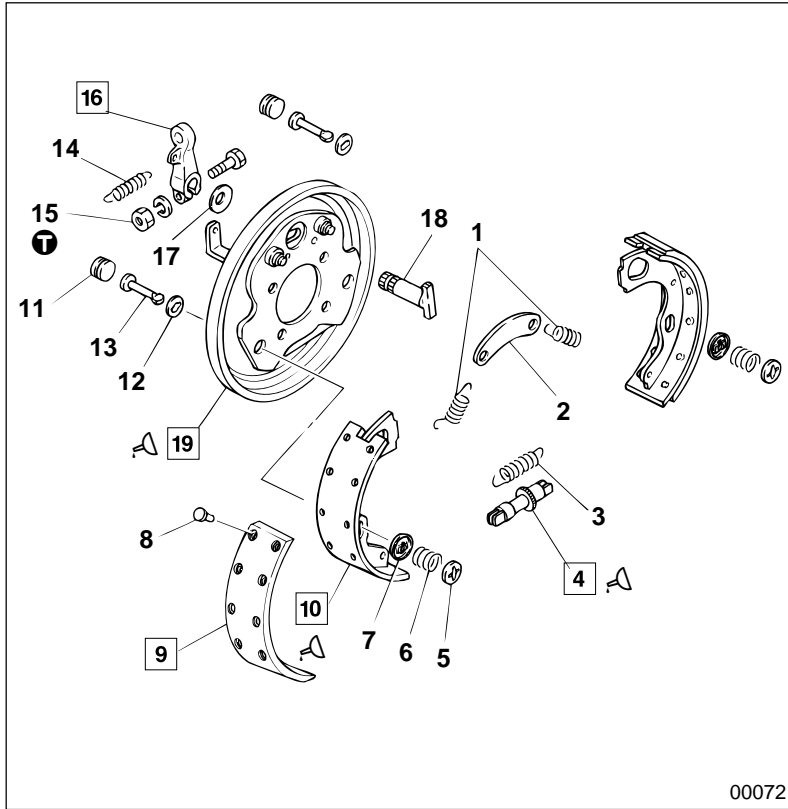


SUPPORT PLATE AND SHOE ASSEMBLY < ø254 mm {10 in.} Drum >



● Disassembly sequence

- 1 Shoe return spring
- 2 Anchor pin brace
- 3 Adjusting wheel return spring
- 4 Adjusting screw
- 5 Shoe hold-down cup
- 6 Shoe hold-down spring
- 7 Shoe hold-down cup
- 8 Rivet
- 9 Lining
- 10 Brake shoe
- 11 Cover
- 12 Shoe hold-down washer
- 13 Shoe hold-down pin
- 14 Camshaft lever return spring
- 15 Nut
- 16 Camshaft lever
- 17 Spring spacer
- 18 Camshaft
- 19 Support plate and cover assembly

● Assembly sequence

Follow the disassembly sequence in reverse.

WARNING ⚠

Do not leave grease or oil on the surface of lining 9 because this reduces braking performance.

NOTE

If lining 9 has been replaced with a new part, check correctness of contact with the parking brake drum.

Service standards

Unit : mm {in.}

| Location | Maintenance item | Standard value | Limit | Remedy |
|----------|--|-------------------------------------|---------------------------|---------|
| 1 | Installed load of shoe return spring (Installed length 75 {2.95}) | 180±18 N {41±4.0 lbf, 18.5±1.8 kgf} | 145 N {33 lbf, 15 kgf} | Replace |
| 3 | Installed load of wheel return spring (Installed length 85 {3.35}) | 105±11 N {24±2.4 lbf, 11±1.1 kgf} | 86 N {19 lbf, 8.8 kgf} | Replace |
| 6 | Installed load of shoe hold-down spring (Installed length 14 {0.55}) | 145±15 N {33±3.3 lbf, 15±1.5 kgf} | 115 N {26 lbf, 12 kgf} | Replace |
| 9 | Lining thickness | 5.8 {0.23} | 3.5 {0.14} | Replace |
| 14 | Installed load of camshaft lever return spring (Installed length 85 {3.35}) | 62±5.9 N {14±1.3 lbf, 6.3±0.6 kgf} | 49 N {11 lbf, 5 kgf} | Replace |

Tightening torque

Unit : N·m {lbf.ft, kgf·m}

| Location | Parts to be tightened | Tightening torque | Remarks |
|----------|-------------------------------|---------------------------------------|---------|
| 15 | Nut (Camshaft lever mounting) | 13.72 to 22.56 {10 to 17, 1.4 to 2.3} | — |

Lubricant

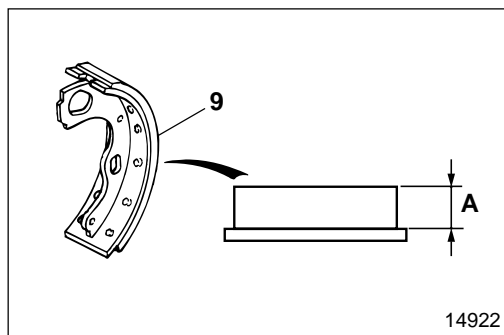
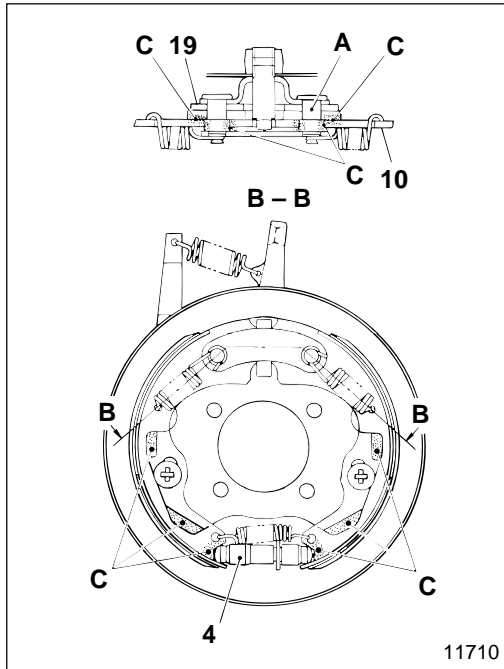
| Location | Points of application | Kinds | Quantity |
|----------|---|-----------------------|-------------|
| 4, 10 | Contact surfaces of both ends of adjusting screw with shoe and lining assembly | Brake grease (AKB100) | As required |
| 10, 19 | Contact surface of support plate and shoe and lining assembly | Brake grease (AKB100) | As required |
| | Contact surface of anchor pin area and support plate and shoe and lining assembly | Brake grease (AKB100) | As required |

◆ Service procedure

4 10 19 Applying grease to adjusting screw, shoe and lining assembly, and support plate

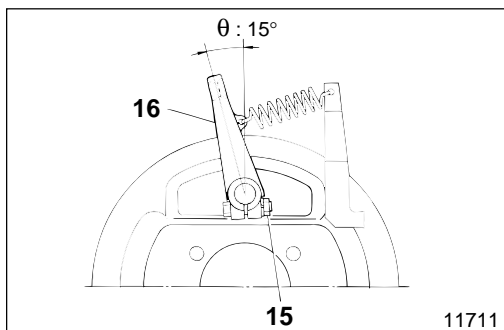
Apply grease to area C.

A : Anchor pin area



9 Inspection of lining

Measure thickness A of lining 9. If the measured value is lower than the limit, replace the lining.



16 Installation of camshaft lever

Install camshaft lever 16, aligning the lever at the specified angle θ , then tighten nut 15 at specified torque.