

GROUP 23B

AUTOMATIC TRANSAXLE OVERHAUL

CONTENTS

GENERAL DESCRIPTION	23B-2	SECOND BRAKE	23B-71
SPECIAL TOOLS	23B-5	DISASSEMBLY AND ASSEMBLY	23B-71
TRANSAXLE	23B-10	OUTPUT SHAFT	23B-72
DISASSEMBLY AND ASSEMBLY	23B-10	DISASSEMBLY AND ASSEMBLY	23B-72
OIL PUMP	23B-59	DIFFERENTIAL	23B-75
DISASSEMBLY AND ASSEMBLY	23B-59	DIFFERENTIAL DISASSEMBLY AND ASSEMBLY.....	23B-75
UNDERDRIVE CLUTCH AND INPUT SHAFT	23B-60	VALVE BODY	23B-79
DISASSEMBLY AND ASSEMBLY	23B-60	DISASSEMBLY AND ASSEMBLY	23B-79
REVERSE AND OVERDRIVE CLUTCH	23B-62	DRIVE SHAFT OIL SEAL	23B-83
DISASSEMBLY AND ASSEMBLY	23B-62	DISASSEMBLY AND ASSEMBLY	23B-83
PLANETARY GEAR	23B-68	SPECIFICATIONS	23B-85
DISASSEMBLY AND ASSEMBLY	23B-68	FASTENER TIGHTENING SPECIFICATIONS.....	23B-85
LOW-REVERSE BRAKE	23B-70	GENERAL SPECIFICATIONS	23B-85
DISASSEMBLY AND ASSEMBLY	23B-70	SERVICE SPECIFICATIONS	23B-86
		VALVE BODY SPRING IDENTIFICATION TABLE.....	23B-86
		ADJUSTING PLATE, SNAP RING AND SPACERS.....	23B-86
		SEALANTS	23B-89

GENERAL DESCRIPTION

M1233000100436

This automatic transaxle is made up of the following main parts.

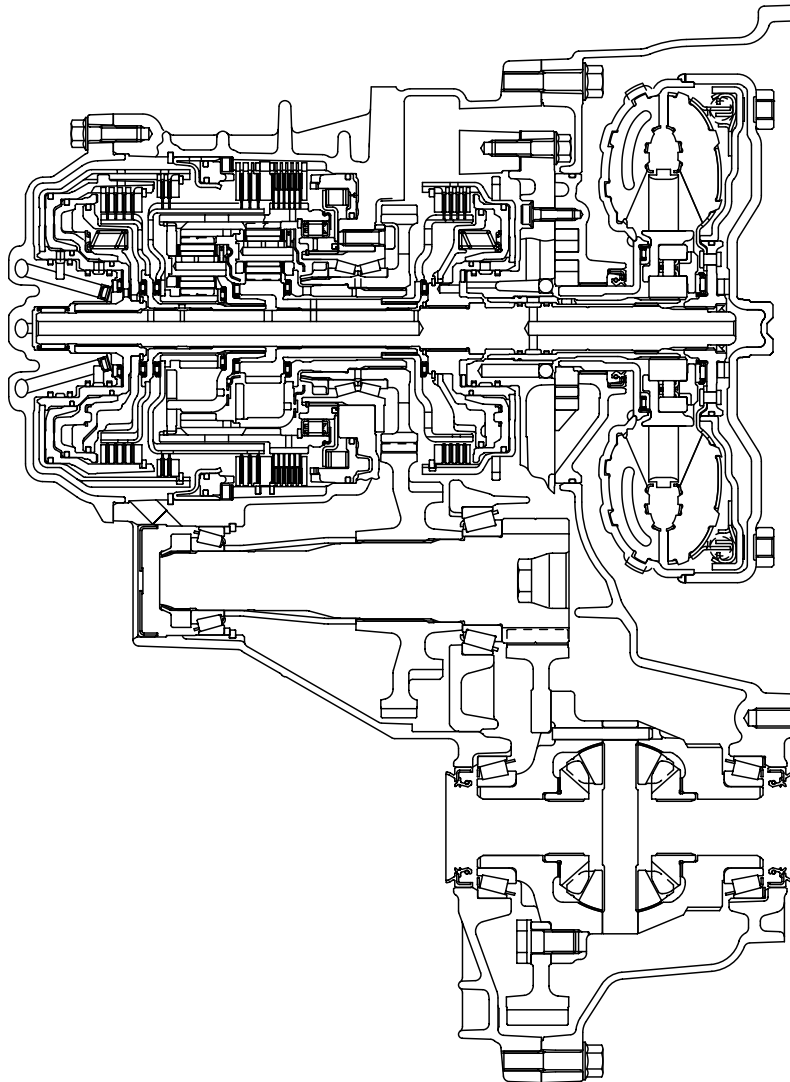
The torque converter employs a 3 element, 1 step, 2 phase lock-up clutch.

The gear train is made up of 3 multi-plate clutches, 2 multi-plate brakes and 2 planetary gears made up of a sun gear, carrier, pinion gear and annulus gear.

The cases consist of a converter housing, transaxle case, rear cover and a valve body cover.

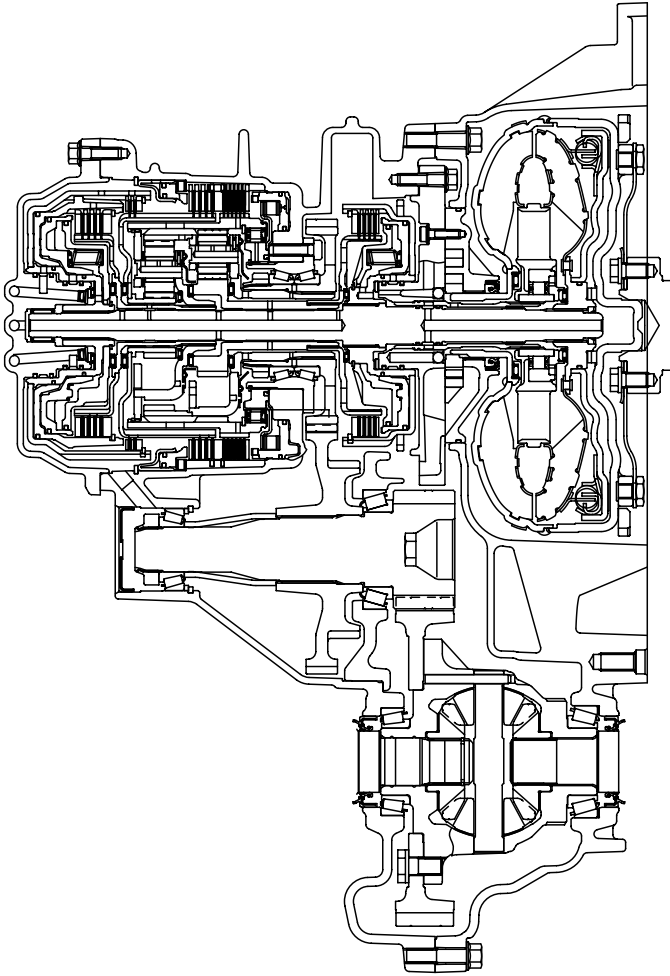
Parts related to oil pressure regulation are the oil pump, which pressurizes the oil; the regulator, which controls the pressure setting; the solenoid valves, which change the oil pressure with electrical signals; the pressure control valve, which controls the oil pressure coming from the solenoid valve that effects each clutch and brake; each kind of valve, which carry out the retention of the oil pressure through the lines; and finally the valve body, which houses all the valves.

SECTIONAL VIEW <F4A4B>



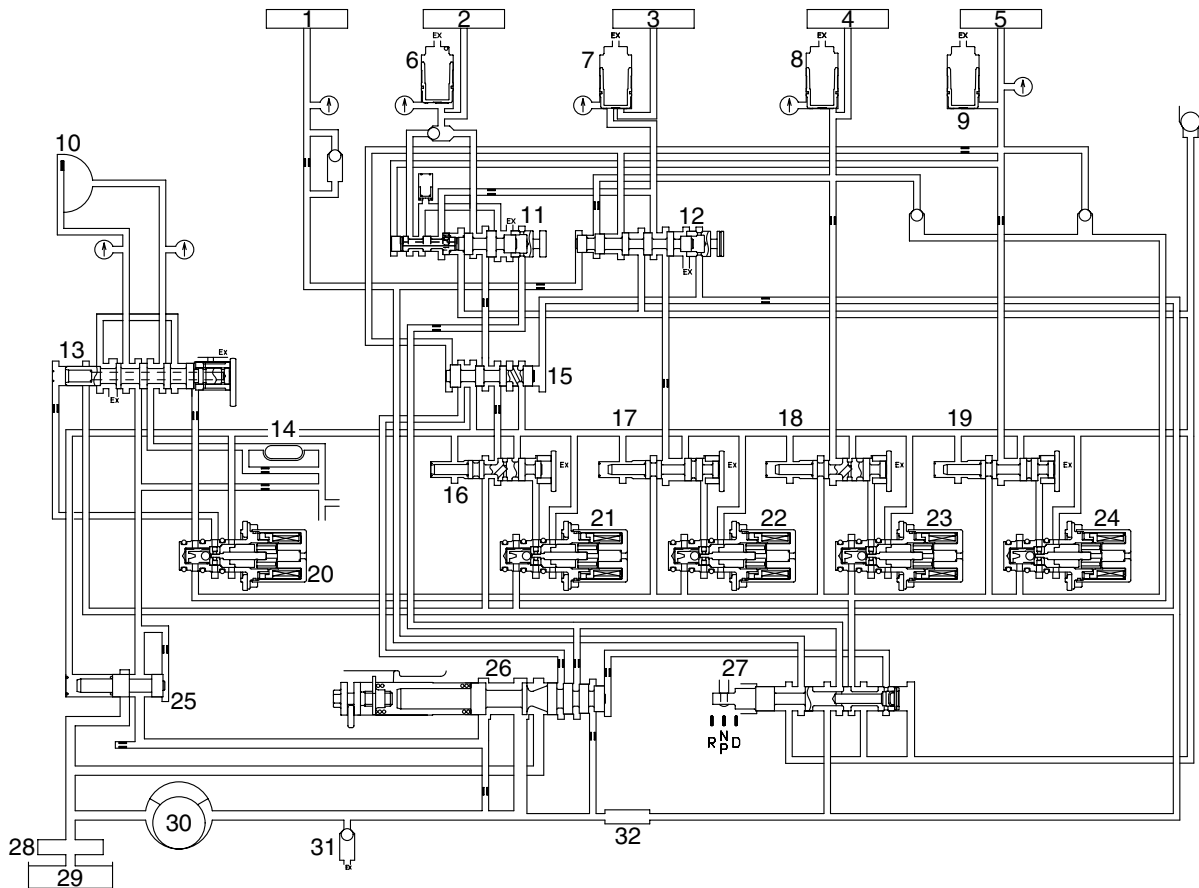
AK301596

SECTIONAL VIEW <F4A5A>



AK204124

HYDRAULIC CIRCUIT

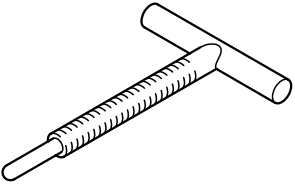
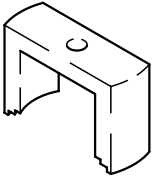
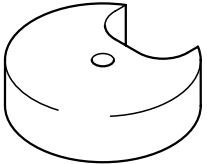
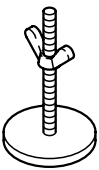
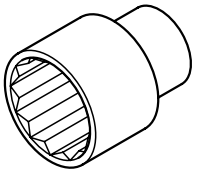
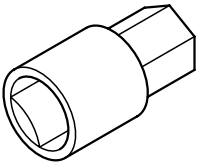
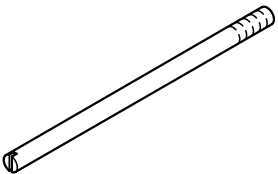


AK202328AC

- | | |
|---|--|
| 1. REVERSE CLUTCH | 18. UNDERDRIVE PRESSURE CONTROL VALVE |
| 2. LOW-REVERSE BRAKE | 19. OVERDRIVE PRESSURE CONTROL VALVE |
| 3. SECOND BRAKE | 20. TORQUE CONVERTER CLUTCH CONTROL SOLENOID VALVE |
| 4. UNDERDRIVE CLUTCH | 21. LOW-REVERSE SOLENOID VALVE |
| 5. OVERDRIVE CLUTCH | 22. SECOND SOLENOID VALVE |
| 6. LOW-REVERSE ACCUMULATOR | 23. UNDERDRIVE SOLENOID VALVE |
| 7. SECOND ACCUMULATOR | 24. OVERDRIVE SOLENOID VALVE |
| 8. UNDERDRIVE ACCUMULATOR | 25. TORQUE CONVERTER PRESSURE CONTROL VALVE |
| 9. OVERDRIVE ACCUMULATOR | 26. REGULATOR VALVE |
| 10. TORQUE CONVERTER CLUTCH | 27. MANUAL VALVE |
| 11. FAIL-SAFE VALVE A | 28. OIL FILTER |
| 12. FAIL-SAFE VALVE B | 29. OIL PAN |
| 13. TORQUE CONVERTER CLUTCH CONTROL VALVE | 30. OIL PUMP |
| 14. COOLER | 31. RELIEF VALVE |
| 15. SWITCHING VALVE | 32. OIL STRAINER |
| 16. LOW-REVERSE PRESSURE CONTROL VALVE | |
| 17. SECOND PRESSURE CONTROL VALVE | |

SPECIAL TOOLS

M1233000600334

TOOL	TOOL NUMBER AND NAME	SUPERSESION	APPLICATION
	MD998333 Oil pump remover	MD998333-01	Removal of oil pump
	MD998903 Spring compressor	MD998903	Removal and installation of one-way clutch inner race snap ring <F4A4B>
	MD998338 Spring compressor	MD998338	Removal and installation of one-way clutch inner race snap ring <F4A5A>
	MD998924 Spring compressor retainer	MD998924-01	Use with spring compressor
	MB991625 Special socket (41)	MB991625-01 or General service tool	Removal and installation of output shaft jam nut
	MB990607 Torque wrench socket	MB990607-01	Removal and installation of output shaft jam nut
	MD998412 Guide	MD998412	Installation of transfer drive gear and oil pump