

## RADIATOR

## REMOVAL AND INSTALLATION

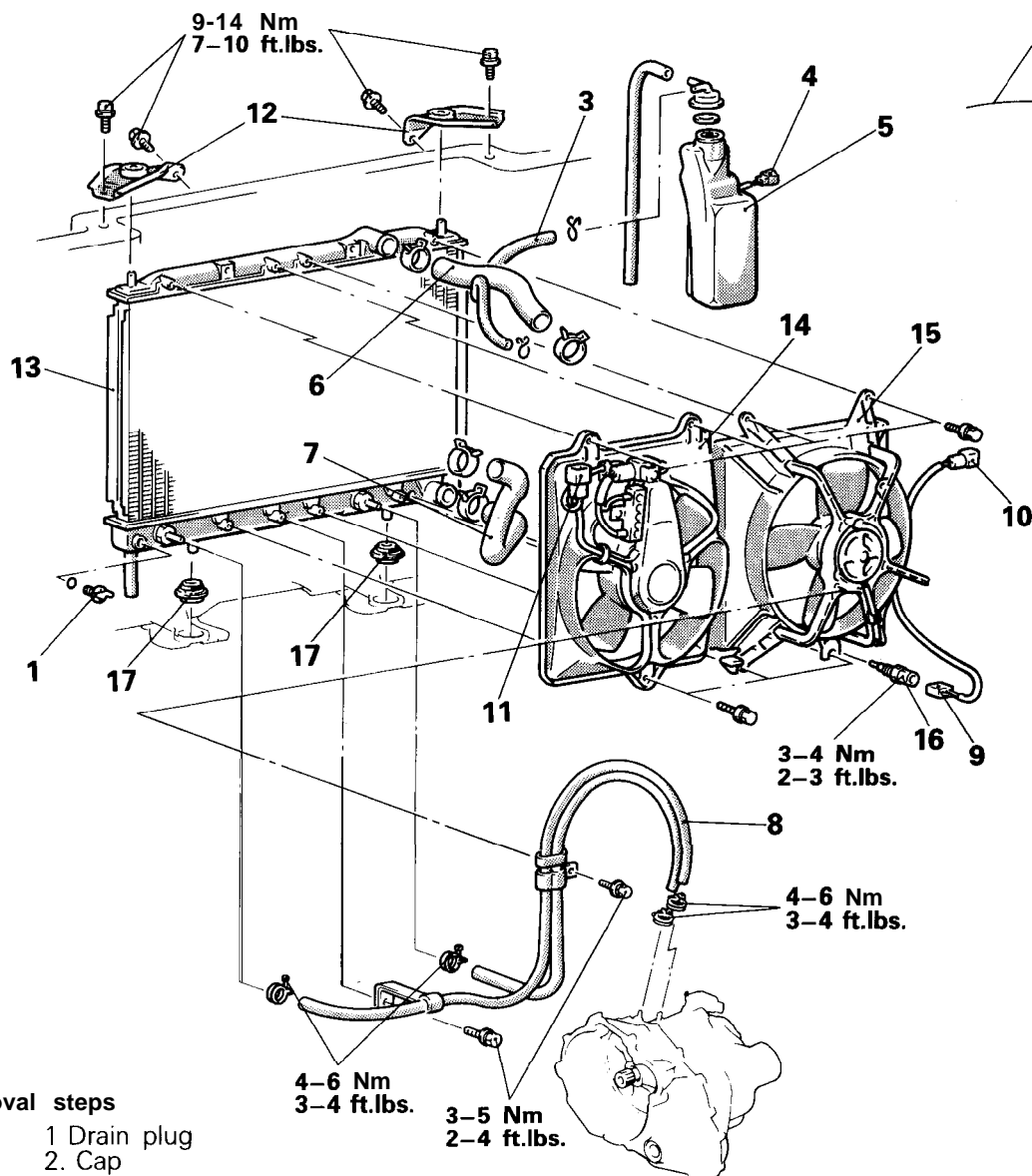
N07QA--

**Pre-removal Operation**

- Draining of the Engine Coolant (Refer to GROUP 0–Maintenance Service.)
- Removal of Air Cleaner Bracket (Refer to GROUP 11–Air Cleaner.) <Turbo>

**Post-installation Operation**

- Installation of Air Cleaner Bracket (Refer to GROUP 11–Air Cleaner.) <Turbo>
- Refilling of the Engine Coolant (Refer to GROUP 0–Maintenance Service.)
- Checking Automatic Transaxle Fluid Level and Refilling If Necessary



04A0097

07A0049

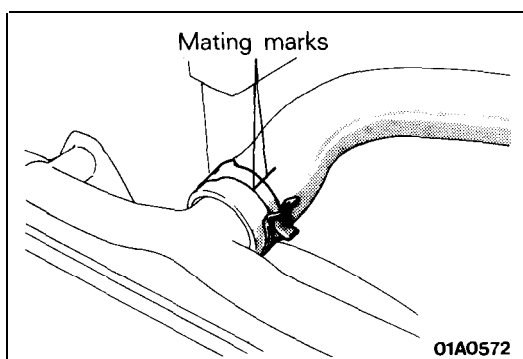
**Removal steps**

1. Drain plug
2. Cap
3. Overflow tube
4. Water level switch connector
5. Reserve tank
6. Radiator upper hose
7. Radiator lower hose
8. Automatic transaxle oil cooler hoses <Vehicles with Non-Turbo (A/T)>
9. Thermo sensor connector
10. Radiator fan motor connector
11. Condenser fan motor connector <Vehicles with air conditioner>
12. Upper insulator

13. Radiator assembly
14. Condenser fan motor assembly <Vehicles with air conditioner>
15. Radiator fan motor assembly
16. Thermosensor
17. Lower insulator

**NOTE**

- (1) Reverse the removal procedures to reinstall.
- (2) ◆◆ : Refer to "Service Points of Removal".
- (3) ● ◆ : Refer to "Service Points of Installation".

**SERVICE POINTS OF REMOVAL**

N07QBAH

**6. REMOVAL OF RADIATOR UPPER HOSE/7. RADIATOR LOWER HOSE**

After making mating marks on the radiator hose and the hose clamp, disconnect the radiator hose.

**8. DISCONNECTION OF AUTOMATIC TRANSAXLE OIL COOLER HOSES**

Use a plug or otherwise cover the hose and nipple part of the radiator so that dust, dirt, foreign materials, etc. do not enter after the hose has been disconnected from the radiator.

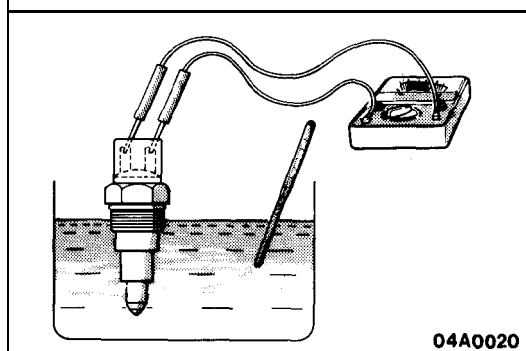
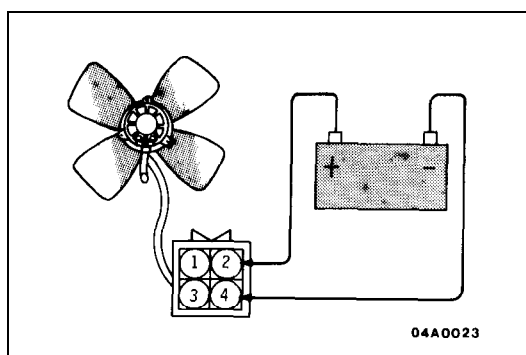
**INSPECTION**

N07QCAM

- Check for foreign material between radiator fins.
- Check the radiator fins for bent, or damage.
- Check the radiator for corrosion, damage rust or scale.
- Check the radiator hoses for cracks, damage or deterioration.
- Check the reserve tank for damage.
- Check the automatic transaxle oil cooler hoses for cracking, damage or deterioration.

**RADIATOR FAN MOTOR INSPECTION**

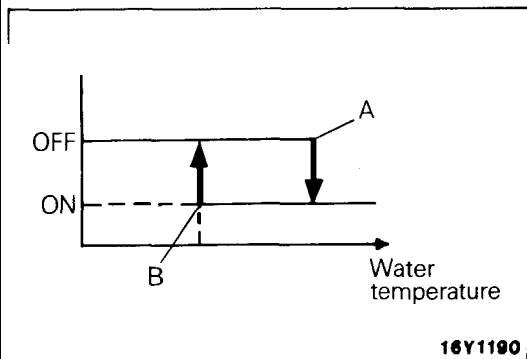
- (1) Check to be sure that the radiator fan rotates when batten/voltage is applied between terminals (as shown in the figure).
- (2) Check to see that abnormal noises are not produced, while motor is turning.

**THERMO SENSOR INSPECTION**

Check for continuity with the thermo sensor in hot water.

**NOTE**

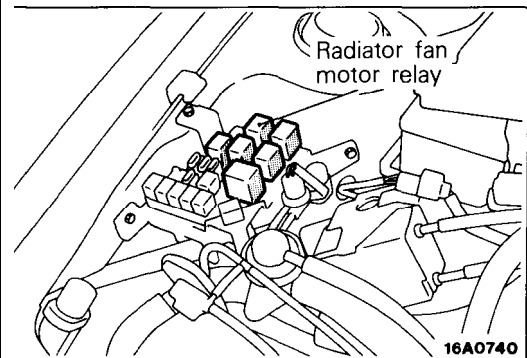
Immerse thermo sensor in hot water up to mounting thread to check for continuity.



Standard value:

Continuity at 82–88°C (180–190°F) ..... at A point

No continuity at 78°C (172°F) or less ..... at B point

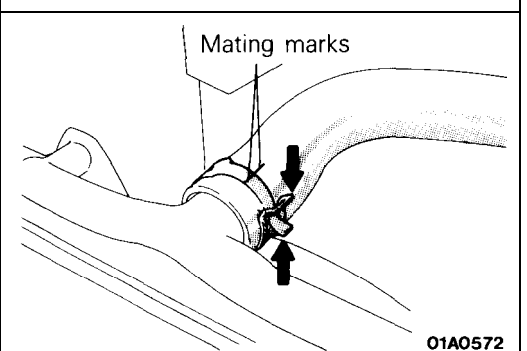
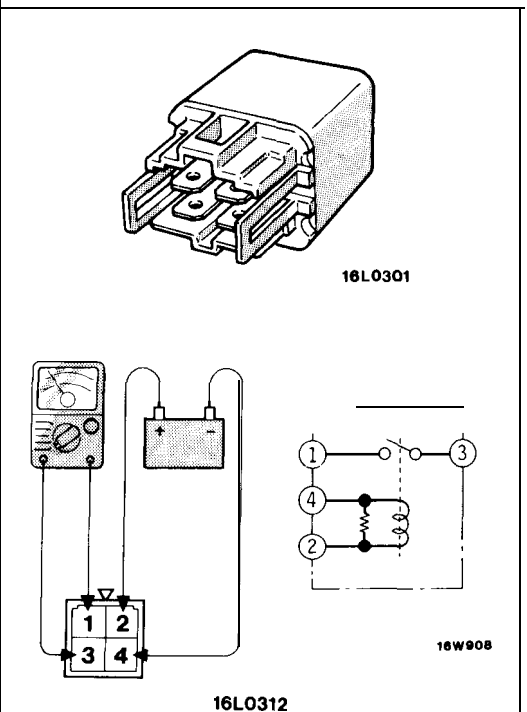


### RADIATOR FAN MOTOR RELAY INSPECTION

- (1) Remove radiator fan motor relay from the relay box located at the right side in the engine compartment.

- (2) Check for continuity between the terminals when the battery power-supply is applied to terminal ②, and terminal ④ is grounded.

When current flows	Between terminals 1–3	Continuity
When no current flows	Between terminals 1–3	No continuity
	Between terminals 2–4	Continuity



### SERVICE POINTS OF INSTALLATION

N07QDAF

#### 7. INSTALLATION OF RADIATOR LOWER HOSE/ 6. RADIATOR UPPER HOSE

Align the mating marks on the radiator hose and hose clamp and then connect them; then, applying force in the direction indicated by the arrow in the illustration, seat the clamp to the trace marks of the previous connection.

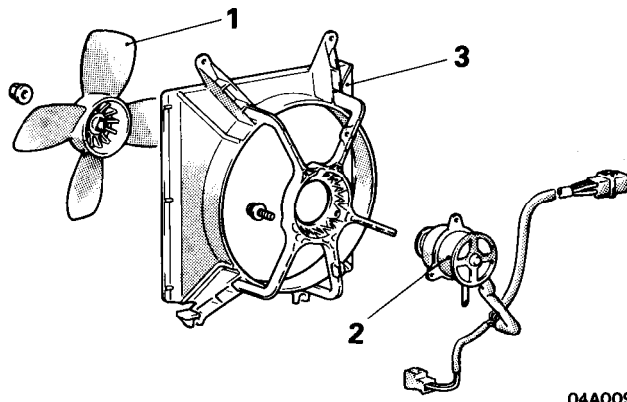
#### Caution

Be sure to install the hose clamps at the trace marks of the previous connection.

# RADIATOR FAN MOTOR ASSEMBLY

N07TA--

## DISASSEMBLY AND REASSEMBLY



04A0092

### Disassembly steps

1. Fan
2. Radiator fan motor
3. Shroud

### NOTE

Reverse the disassembly procedures to reassemble.

## THERMOSTAT

### REMOVAL AND INSTALLATION

N07GB--

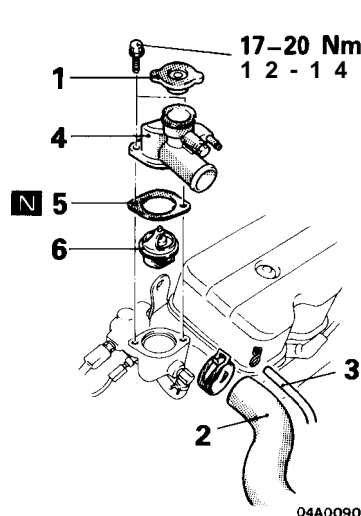
#### Pre-removal Operation

- Draining of the Engine Coolant (Refer to GROUP 0--Maintenance Service.)

#### Post-installation Operation

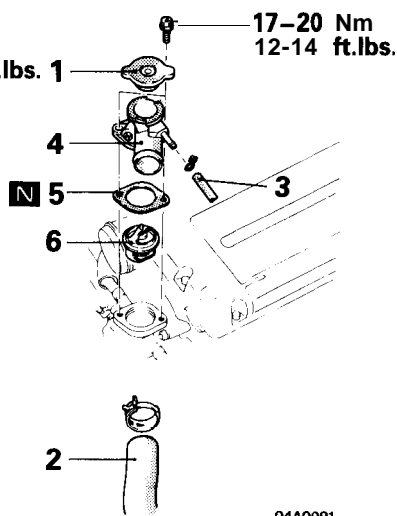
- Supplying of the Engine Coolant (Refer to GROUP 0--Maintenance Service.)

#### < 1.8L Engine >



04A0090

#### < 2.0L DOHC Engine >



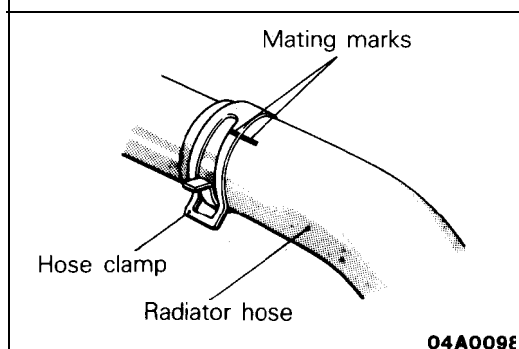
04A0091

### Removal steps

1. Cap
2. Connection for radiator upper hose
3. Connection for overflow tube
4. Water outlet fitting
5. Gasket
- + 6. Thermostat

### NOTE

- (1) Reverse the removal procedures to reinstall.
- (2) ◆◆ : Refer to "Service Points of Removal".
- (3) ● ◆ : Refer to "Service Points of Installation".
- (4) N : Non-reusable parts



04A009E

## SERVICE POINTS OF REMOVAL

N07GCAA

### 2. DISCONNECTION OF RADIATOR UPPER HOSE

After making mating marks on the radiator hose and the hose clamp, disconnect the radiator hose.