

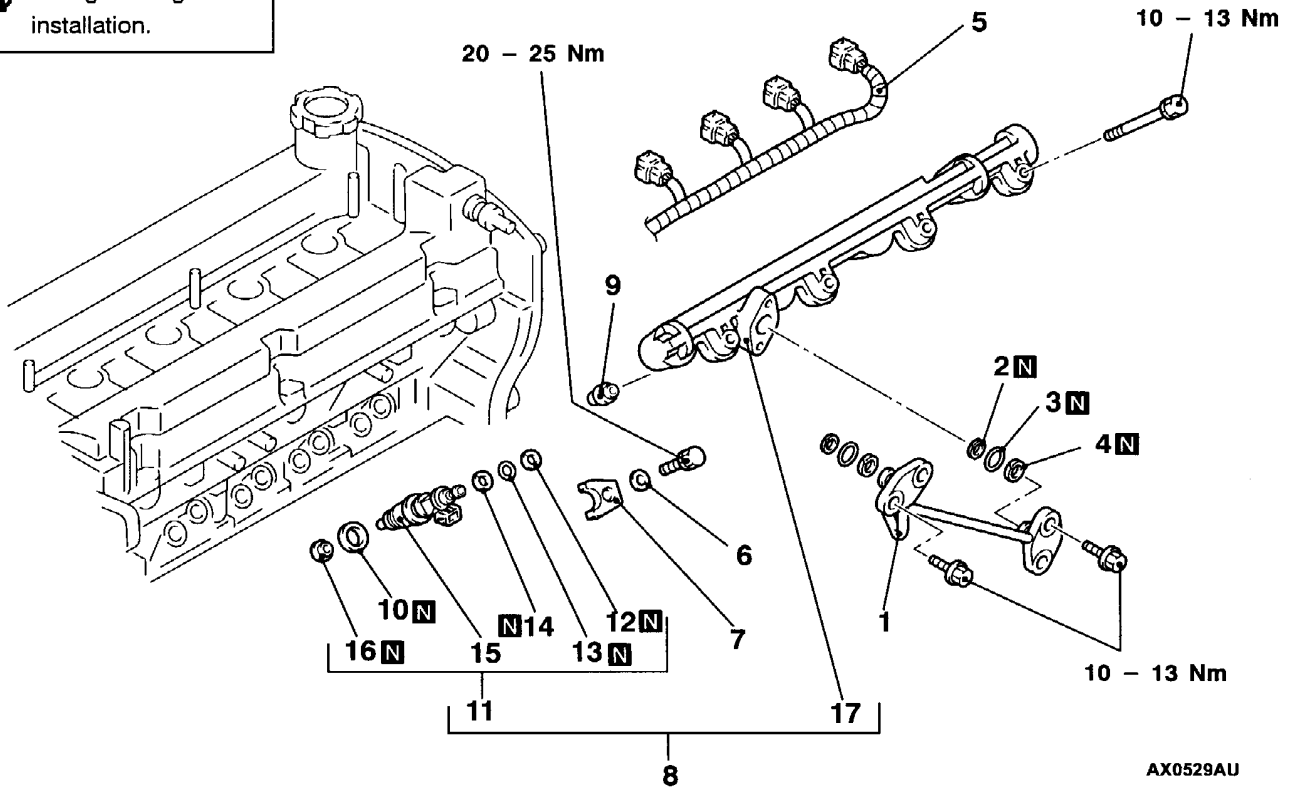
INJECTOR

REMOVAL AND INSTALLATION

Pre-removal and Post-installation Operation

- Prevention of fuel discharge <before removal only>
- Intake Manifold Removal and Installation (Refer to GROUP 15.)
- Fuel Leak Check <after installation only> (Refer to P.13A-132.)

Apply engine oil to all O-rings during installation.



AX0529AU

Removal steps

- | | |
|---|--|
| <p>▶E▶ ● Air-bleeding high-pressure fuel line</p> <p>▶D▶ 1. Fuel pipe</p> <p>▶D▶ 2. Back-up ring A</p> <p>▶D▶ 3. O-ring</p> <p>▶D▶ 4. Back-up ring B</p> <p>◀A▶ 5. Injector harness connector</p> <p>▶C▶ 6. Washer</p> <p>▶C▶ 7. Injector holder</p> <p>◀B▶ ▶C▶ 8. Delivery pipe and fuel injector assembly</p> | <p>▶C▶ 9. Insulator</p> <p>▶C▶ 10. Gasket</p> <p>◀B▶ ▶B▶ 11. Fuel injector assembly</p> <p>▶A▶ ▶A▶ 12. Back-up ring A</p> <p>▶A▶ ▶A▶ 13. O-ring</p> <p>▶A▶ ▶A▶ 14. Back-up ring B</p> <p>▶A▶ ▶A▶ 15. Fuel injector</p> <p>▶A▶ ▶A▶ 16. Corrugated washer</p> <p>▶A▶ ▶A▶ 17. Delivery pipe</p> |
|---|--|

REMOVAL SERVICE POINTS**◀A▶ INJECTOR HARNESS CONNECTOR DISCONNECTION****Caution**

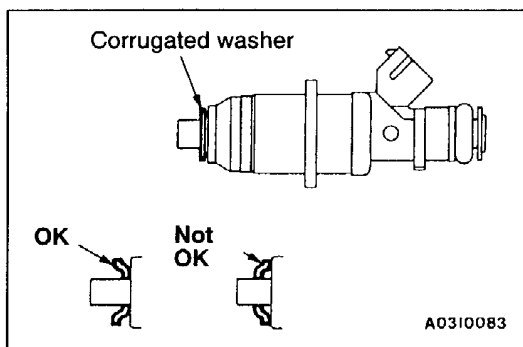
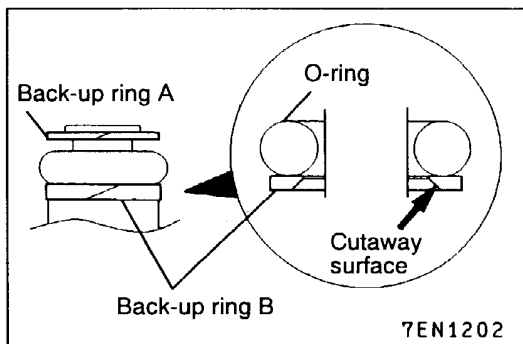
Disconnect the negative battery cable from its terminal before carrying out this operation.

◀B▶ DELIVERY PIPE AND FUEL INJECTOR ASSEMBLY REMOVAL

Remove the delivery pipe assembly with the fuel injector assembly still attached.

Caution

Be careful not to drop the fuel injector assembly when removing the delivery pipe assembly.

**INSTALLATION SERVICE POINTS****▶A◀ CORRUGATED WASHER/BACK-UP RING B/ O-RING/BACK-UP RING A INSTALLATION**

1. Install the back-up rings and the O-ring as shown in the illustration.

Caution

- (1) Install the back-up ring B facing its cutaway surface toward the opposite side of the O-ring as shown in the illustration.
- (2) Confirm the outer diameter of the back-up ring A. Take care not to install the back-up ring for the fuel pressure sensor by mistake. (Outer diameter of the back-up ring A: 14.8 mm)
2. Apply petroleum jelly to the corrugated washer to prevent it from falling off, and install it in the direction shown.

Caution

- (1) The corrugated washer should always be replaced with a new part.
- (2) There should be no scratches or foreign particles on the corrugated washer mounting surface of the injector.
- (3) Be careful not to mistake the corrugated washer installation direction.

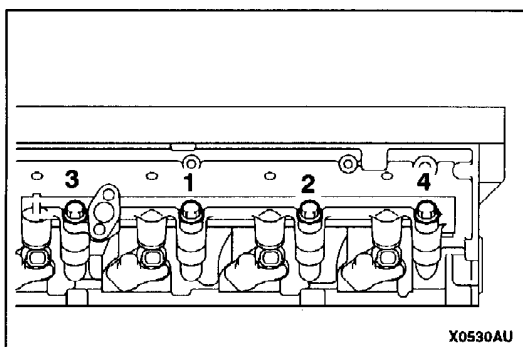
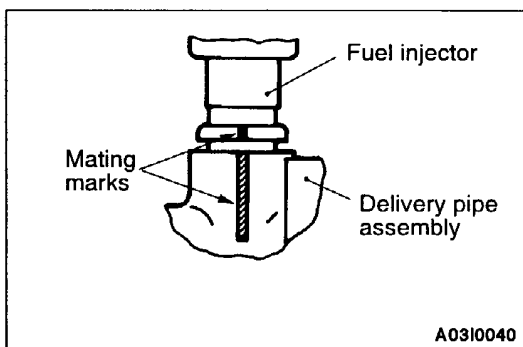
►B◄ FUEL INJECTOR ASSEMBLY INSTALLATION

1. Apply a small amount of fresh engine oil to the O-ring.

Caution

Take care not to let any of the engine oil get inside the delivery pipe assembly.

2. While being careful not to damage the O-ring, turn the fuel injector assembly to the left and right and connect it to the delivery pipe assembly. After connecting, check that the fuel injector turns smoothly.
3. If the fuel injector does not turn smoothly, the cause may be that the O-ring is getting caught. Remove the fuel injector, check the O-ring for damage and re-connect the fuel injector to the delivery pipe assembly and then re-check.

**►C◄ GASKET/INSULATOR/DELIVERY PIPE AND FUEL INJECTOR ASSEMBLY/INJECTOR HOLDER/WASHER INSTALLATION**

1. Align the mating marks on the delivery pipe and fuel injector assembly, and then install the delivery pipe assembly with the injector assembly still attached.
2. Install the gasket and insulator to the cylinder head.
3. Install the delivery pipe and fuel injector assembly to the cylinder head, and loosely install the mounting bolts.
4. Install the injector holder and washer, and tighten the mounting bolts to the specified torque.

Tightening torque: 20 – 25 Nm

5. Tighten the loosely installed delivery pipe and fuel injector assembly mounting bolts to the specified torque in the sequence shown.

Tightening torque: 10 – 13 Nm

►H◄ AIR-BLEEDING HIGH-PRESSURE FUEL LINE

1. After installing the fuel pump (high pressure), run the engine at 2000 r/min for at least 15 seconds in order to bleed air from the high-pressure fuel line.

NOTE

If air is trapped in the high-pressure fuel line due to the removal of fuel pipe, diagnosis code No.56 will be set as abnormal fuel pressure.

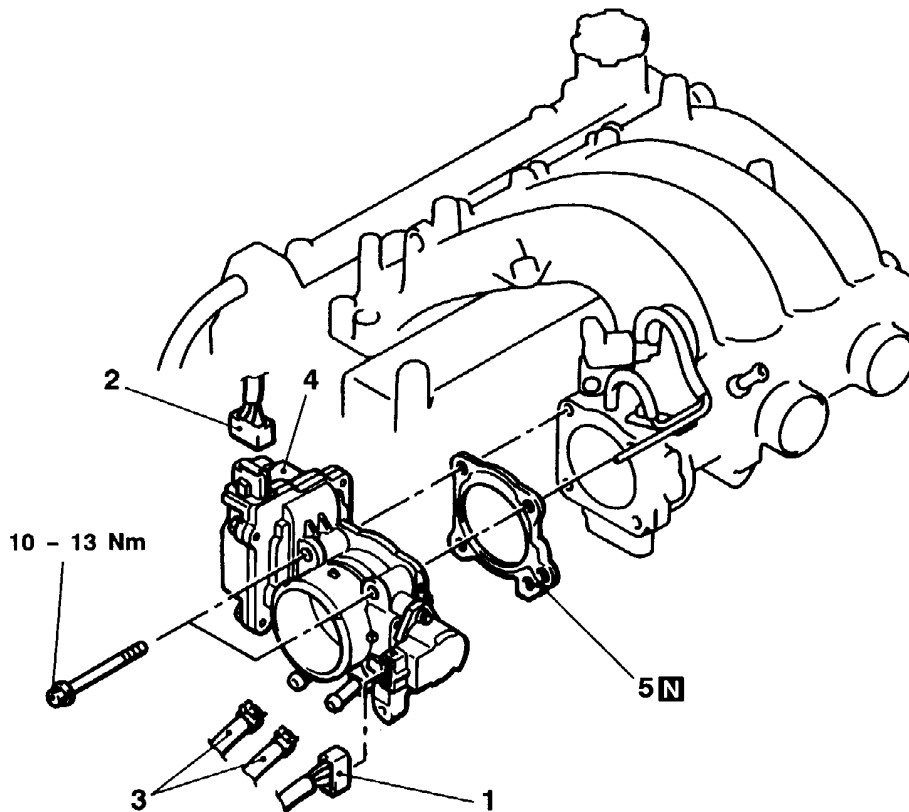
2. Finally confirm diagnosis code by using the MUT-II. If diagnosis code, which indicates defective fuel pressure sensor system, has been set, erase the code.

THROTTLE BODY

REMOVAL AND INSTALLATION

Pre-removal and Post-installation Operation

- Engine Coolant Draining and Supplying
- Air Cleaner Assembly Removal and Installation

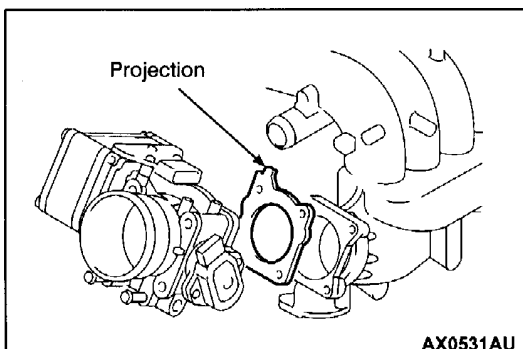


AV0853AE

Removal steps

1. Throttle position sensor connector
2. Throttle control servo connector
3. Water hose connection

- B 4. Throttle body assembly
A 5. Throttle body gasket



AX0531AU

INSTALLATION SERVICE POINT

▶A◀ THROTTLE BODY GASKET INSTALLATION

Position the projection as shown in the illustration.

▶B◀ THROTTLE BODY INSTALLATION

If the throttle body is replaced, initialize the electronic-controlled throttle valve system.

Initialization

Turn on the ignition switch, and turn off it within one second. Then leave it for at least ten seconds with the ignition switch off.