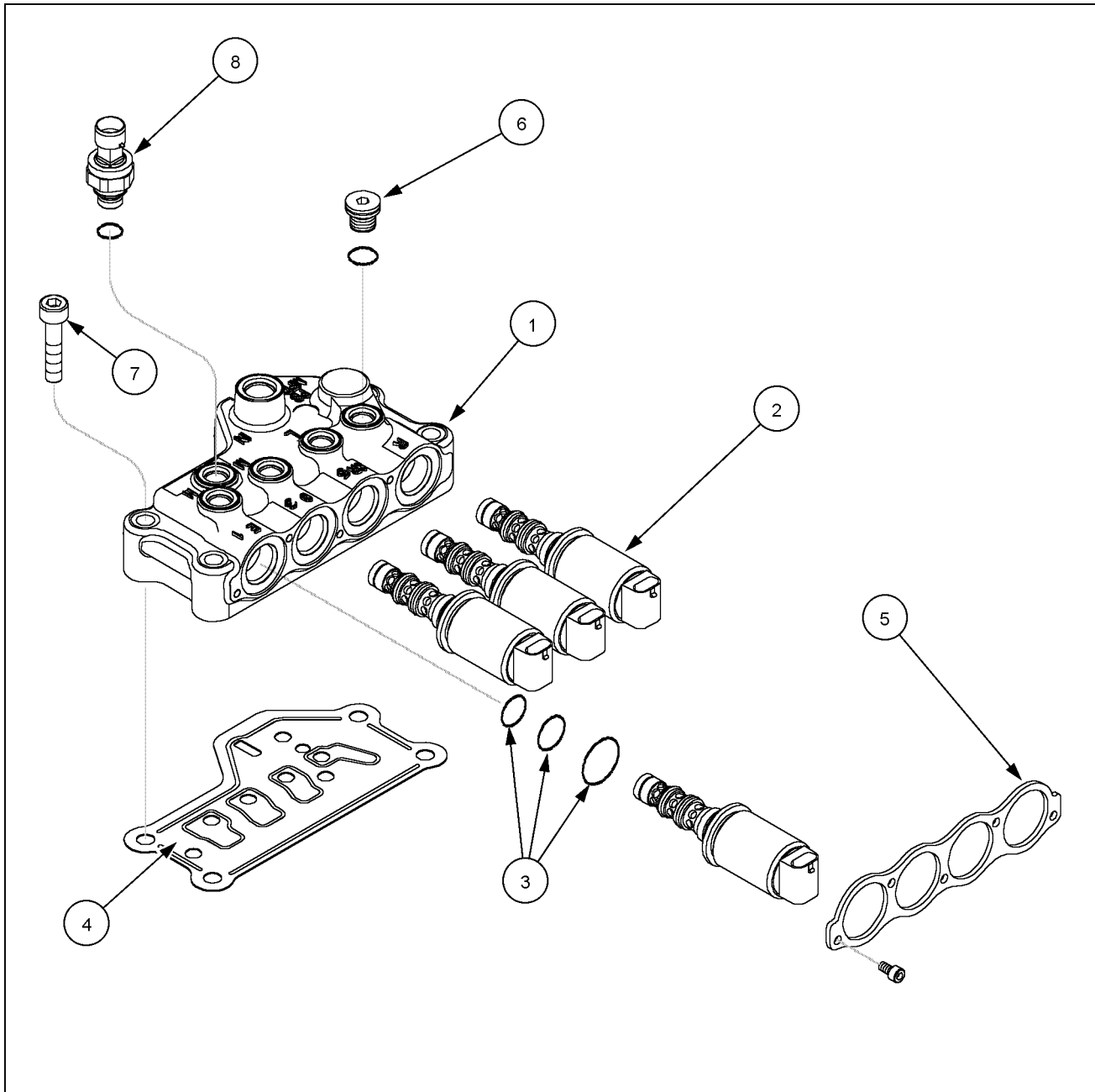


## Transmission control valve Clutch control valve - Exploded view - C1-C4 clutches

T8.275 [ZCRC02586 - ] WE, T8.300 [ZCRC02586 - ] WE, T8.330 [ZCRC02586 - ] WE, T8.360 [ZCRC02586 - ] WE, T8.390 [ZCRC02586 - ] WE

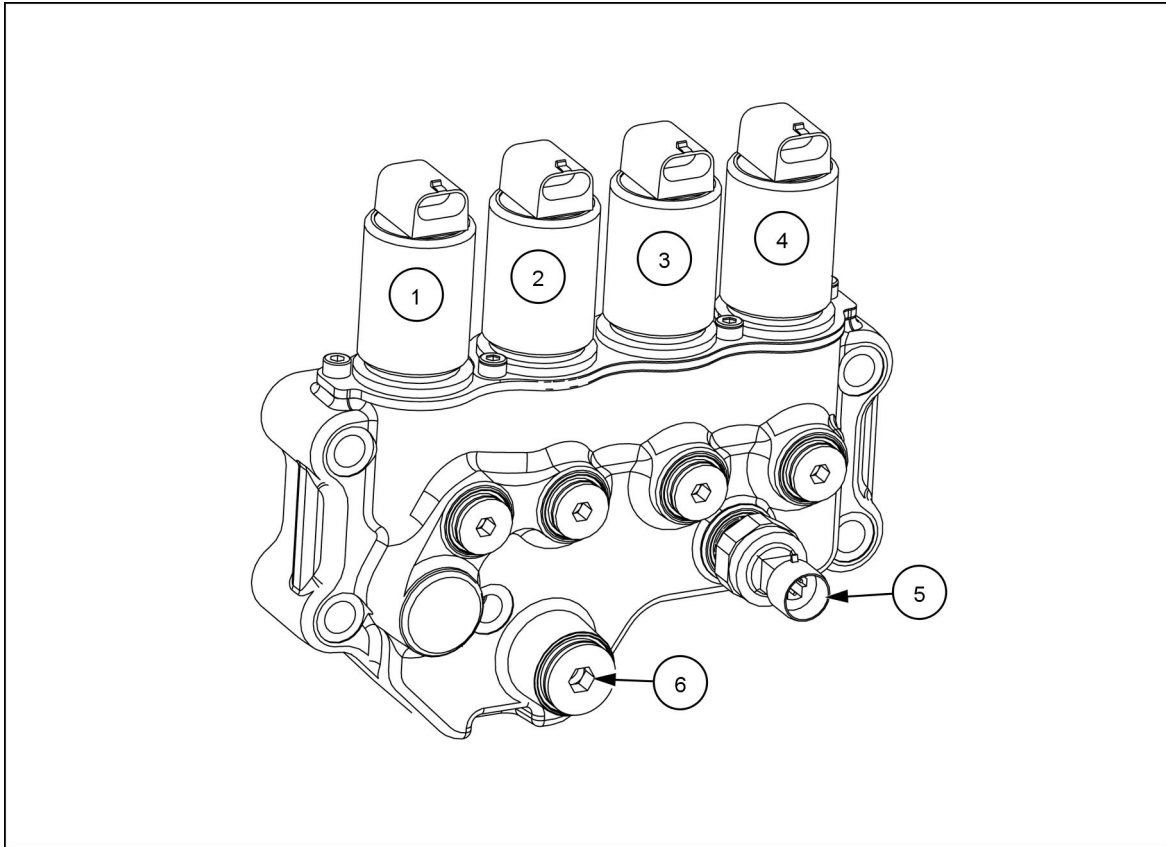


RCPH07CCH010GAA 1

1. Clutch control valve body C1 — C4 Clutches	5. Retaining plate
2. Clutch solenoid valve assembly	6. Hex socket plug
3. O-rings solenoid	7. Mounting bolt
4. Gasket valve mounting	8. Pressure sensor

## Transmission control valve Clutch control valve - Sectional view - C1-C4 clutches

T8.275 [ZCRC02586 - ] WE, T8.300 [ZCRC02586 - ] WE, T8.330 [ZCRC02586 - ] WE, T8.360 [ZCRC02586 - ] WE, T8.390 [ZCRC02586 - ] WE



RAIL13TR00883FA 1

1. C1 clutch solenoid	4. C4 clutch solenoid
2. C2 clutch solenoid	5. Transmission pressure sensor
3. C3 clutch solenoid	6. Regulated supply outlet to forward/reverse clutch control valve

## Transmission control valve Clutch control valve - Dynamic description - C1-C4 clutches

T8.275 [ZCRC02586 - ] WE, T8.300 [ZCRC02586 - ] WE, T8.330 [ZCRC02586 - ] WE, T8.360 [ZCRC02586 - ] WE, T8.390 [ZCRC02586 - ] WE

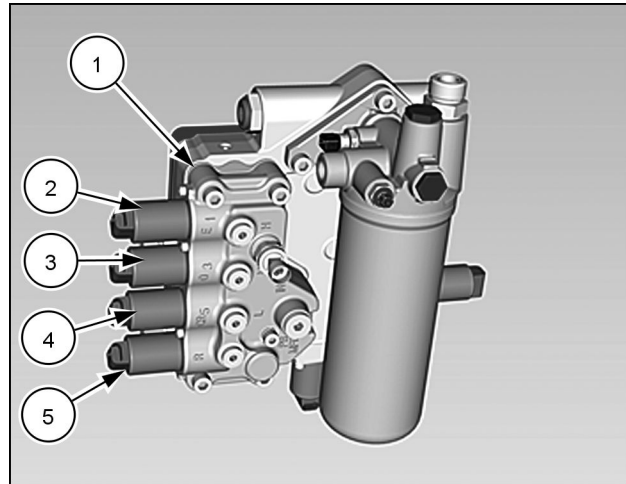
The transmission control valve assembly for the C1, C2, C3 and C4 clutch (1) is mounted on the pressure regulator valve, located on the right hand side of the transmission.

The front section of the tandem gear pump is the regulated circuit pump. The regulated circuit pump supply flow is internally ported from the pressure regulator valve into the transmission control valve for the C1, C2, C3 and C4 clutch.

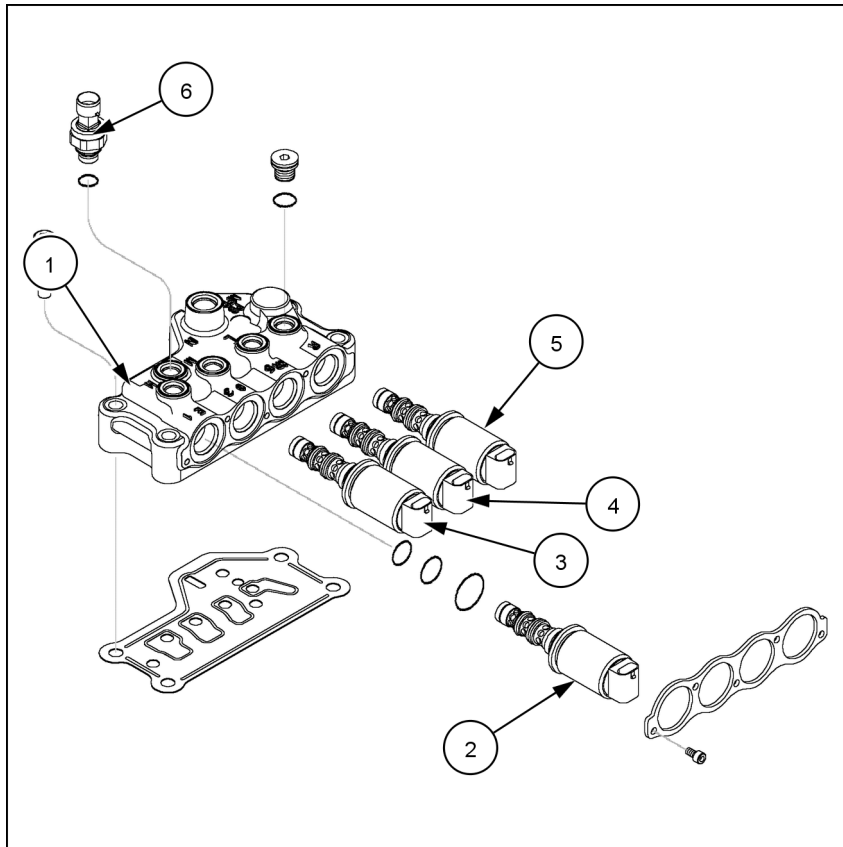
The regulated pressure circuit supplies the C1, C2, C3 and C4 transmission clutch control functions. The regulated supply to the transmission control valve is limited to **22.4 - 24.5 bar (325 - 355 psi)**.

The regulated supply from the transmission control valve to the C1, C2, C3 and C4 clutch is internally ported through the pressure regulator valve on the main transmission housing.

When the C1, (5) or C2, (4) or C3, (3) or C4, (2) solenoids are energized the regulated flow is directed to the clutch. When the solenoid is de-energized the regulated flow is ported to tank.

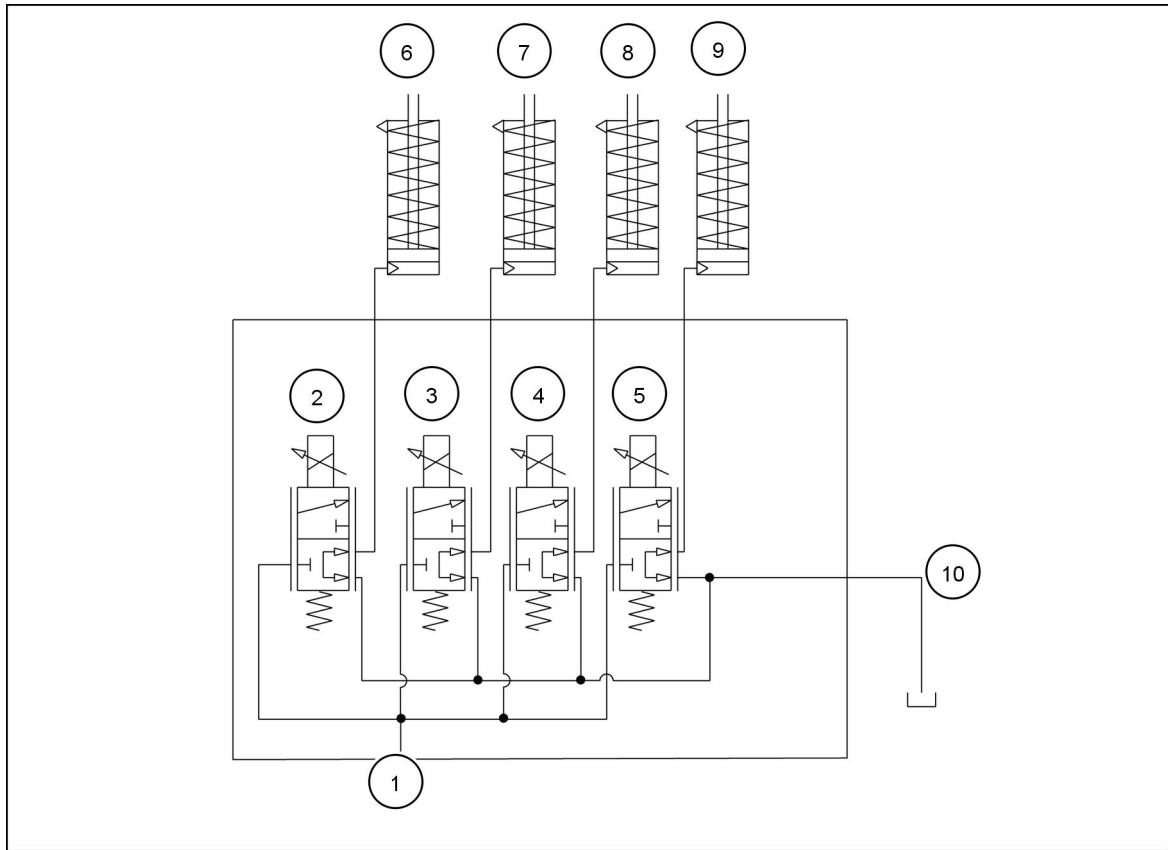


RAIL13TR00705AA 1



RCPH07CCH010GAA 2

1. Clutch control valve body C1 — C4 Clutches	4. C2 clutch solenoid
2. C4 clutch solenoid	5. C1 clutch solenoid
3. C3 clutch solenoid	6. Transmission pressure sensor

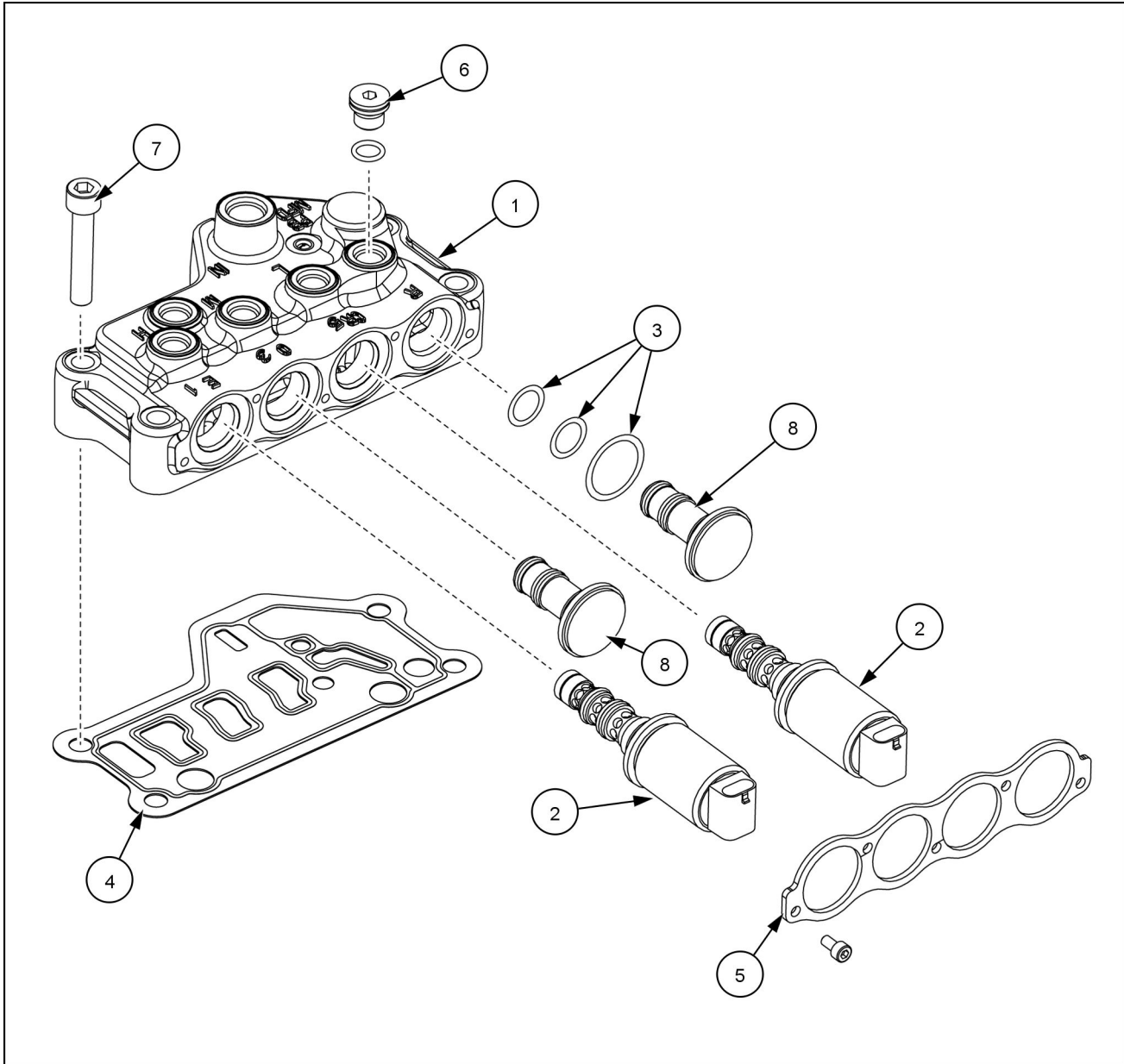


RAIL13TR00879FA 3

1. Regulated supply inlet	6. C1 clutch
2. C1 solenoid	7. C2 clutch
3. C2 solenoid	8. C3 clutch
4. C3 solenoid	9. C4 clutch
5. C4 solenoid	10. To tank

## Transmission control valve Forward and reverse valve - Exploded view

T8.275 [ZCRC02586 - ] WE, T8.300 [ZCRC02586 - ] WE, T8.330 [ZCRC02586 - ] WE, T8.360 [ZCRC02586 - ] WE, T8.390 [ZCRC02586 - ] WE



RAIL13TR00532GA 1

1. Control valve body forward and reverse	5. Retaining plate
2. Solenoid valve assembly	6. Hex socket plug
3. O-rings solenoid	7. Mounting bolt
4. Gasket valve mounting	8. Proportional plug