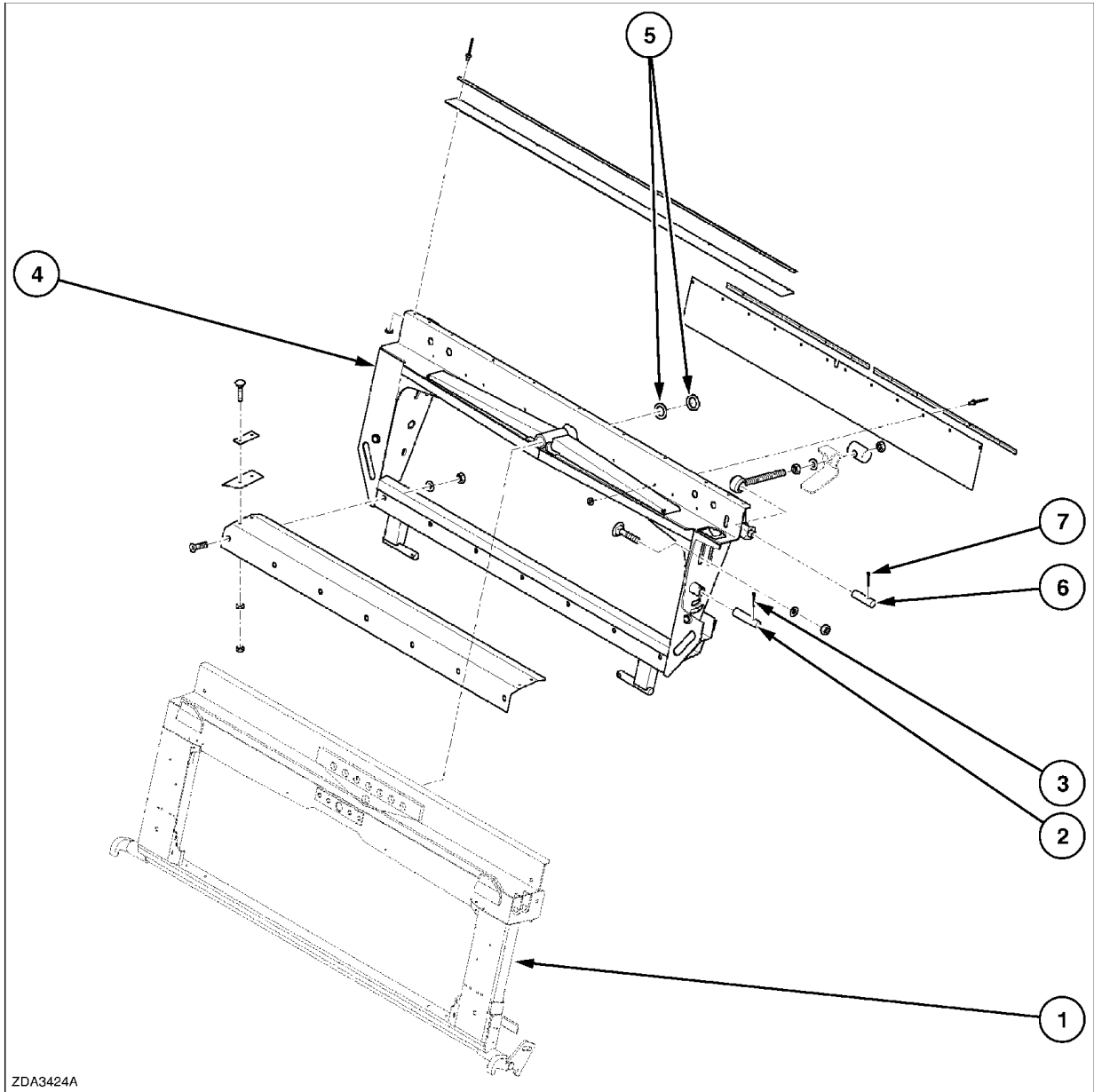


## Cradle Front face adjustment system - Exploded view (K.25.E.77.64 - C.10.A.20)



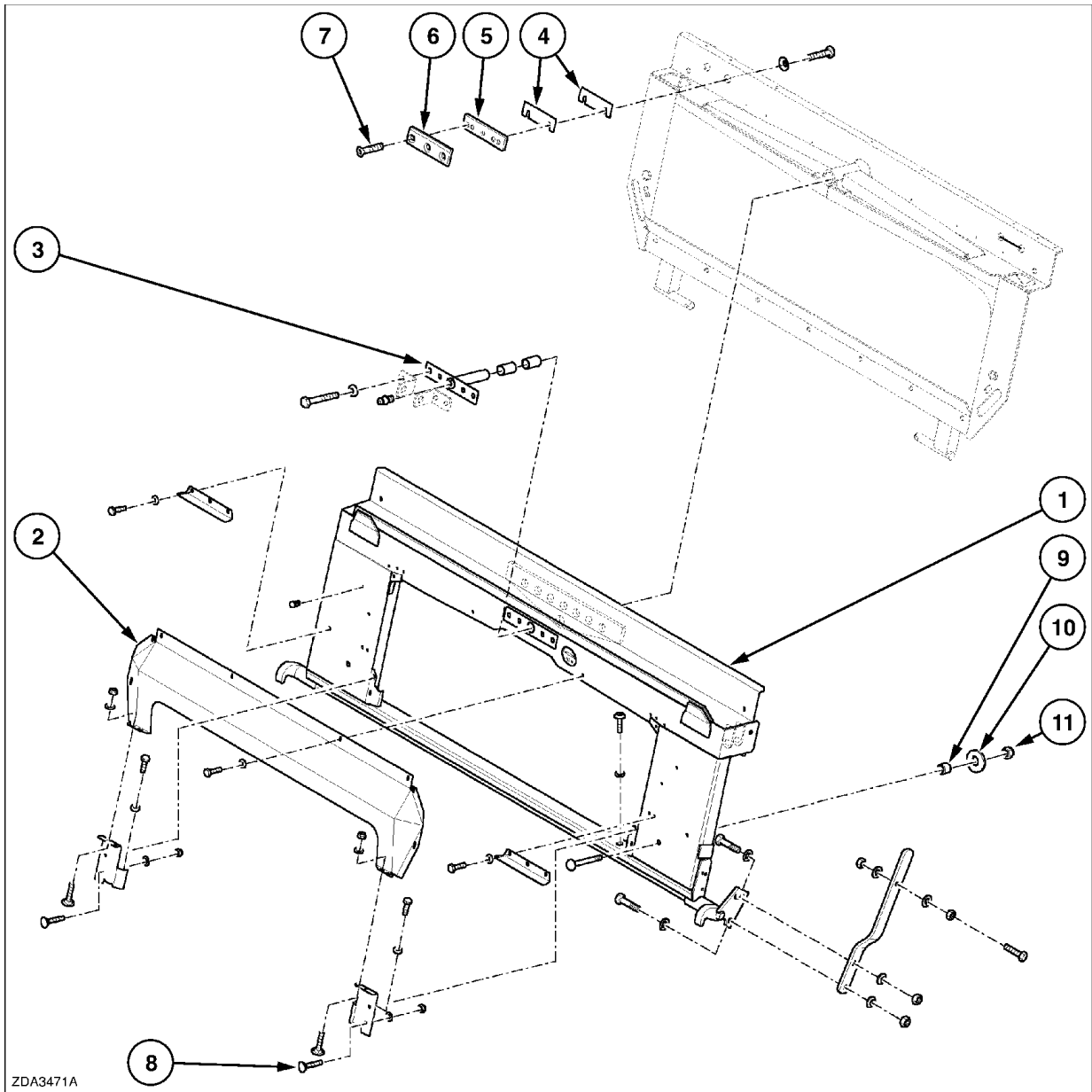
ZDA3424A

ZDA3424A 1

- 1 Cradle
- 3 Cotterpin
- 5 Washer
- 7 Cotterpin

- 2 Pivot axle
- 4 Front face frame
- 6 Axle

## Cradle - Exploded view (K.25.E.77 - C.10.A.20)



ZDA3471A

ZDA3471A 1

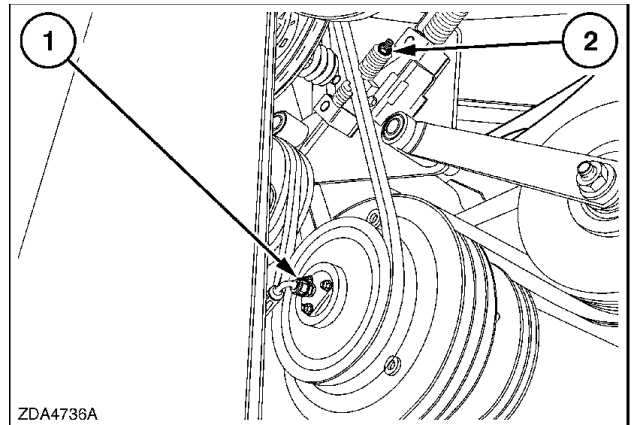
- 1 Cradle
- 3 Central axle
- 5 Support
- 7 Bolt
- 9 Spacer
- 11 Locknut

- 2 Anti dust plate
- 4 Shim pack
- 6 Sealing
- 8 Coach bolt
- 10 Washer

## Drive system Clutch - Disassemble (K.25.E.40.42 - F.10.A.25)

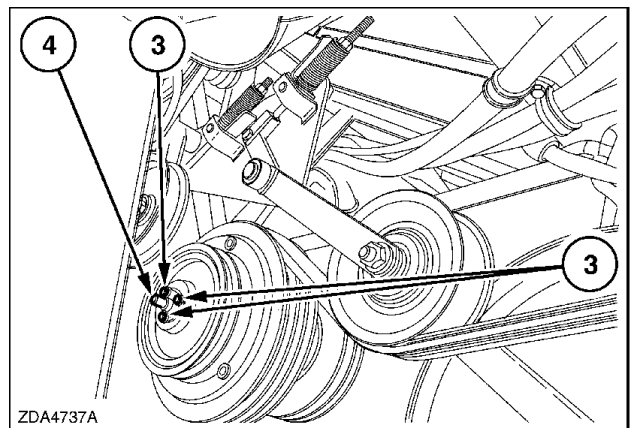
1. Loosen nut (1) to remove the hydraulic hose.  
Loosen nut (2) and remove the grain elevator intermediate shaft drive belt.

**NOTE:** Hang-up the hydraulic hose to avoid oil contamination.



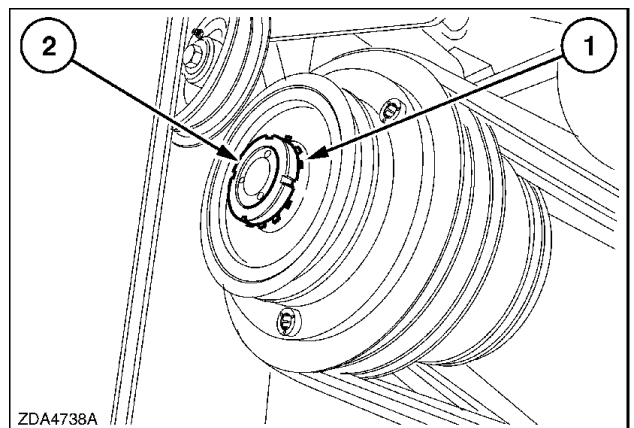
ZDA4736A 1

2. Loosen three bolts (3) and remove the retaining plate.  
Pull rotating connector (4) out of the shaft.



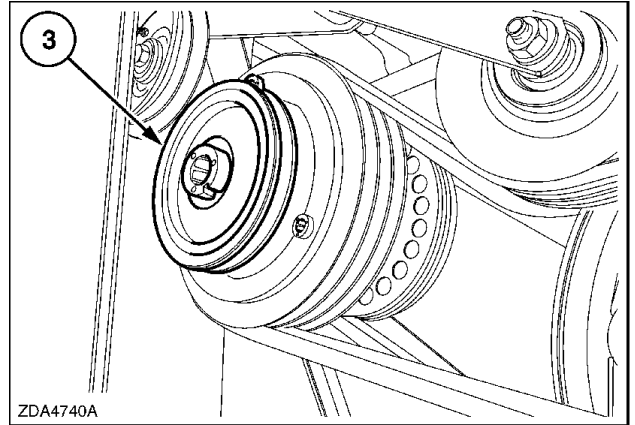
ZDA4737A 2

3. Bent the lip of washer (1) back.  
Remove nut (2) and the washer.

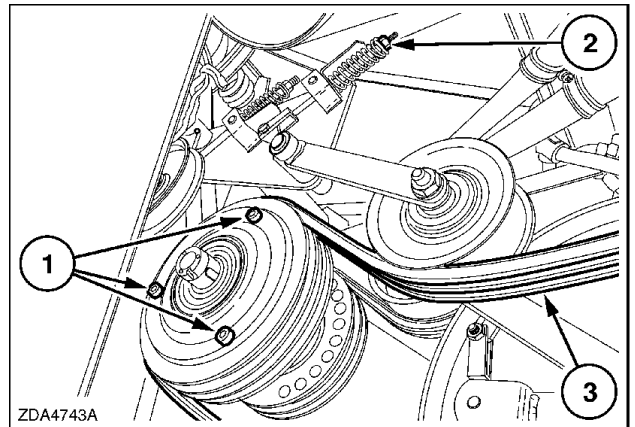


ZDA4738A 3

4. Remove V-pulley (3).

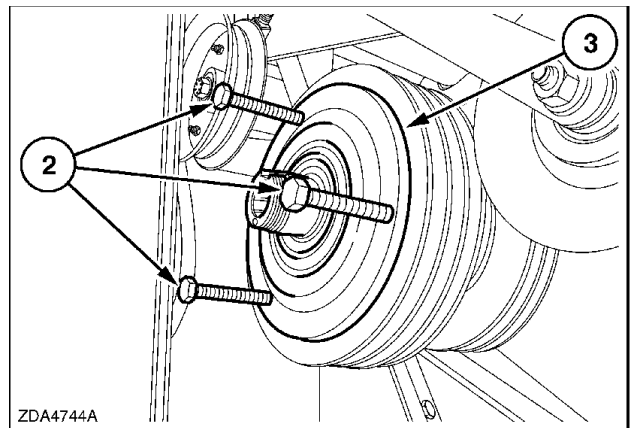


5. Loosen three Allen screws (1) by a 1/4 of a turn. Loosen nut (2) and remove header and straw elevator intermediate drive belt (3).



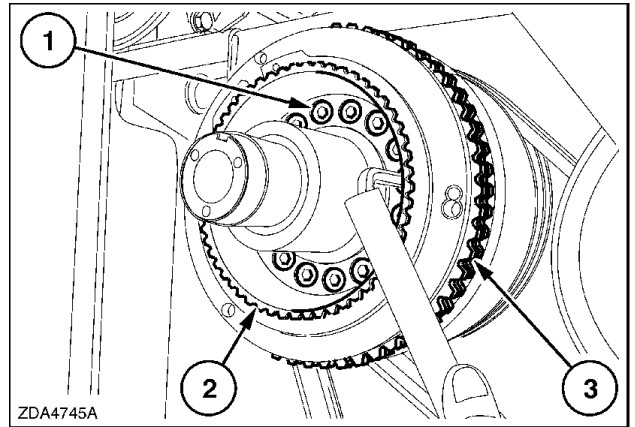
6. Replace Allen screws (1) (fig.5) by 3 bolts (2) or threaded rods metric 14 with a length of 100 mm. (3-15/16 in)  
Gradually screw in bolts (2) to push of V-pulley assembly (3).

**NOTE:** Take care for the outer bearing.



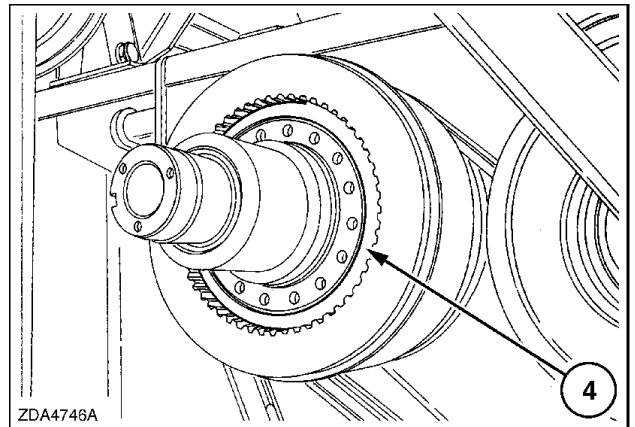
CROP PROCESSING - FEEDING Feeder housing

7. Remove sixteen Allen screws (1).  
Remove disc carrier (2) together with discs (3).



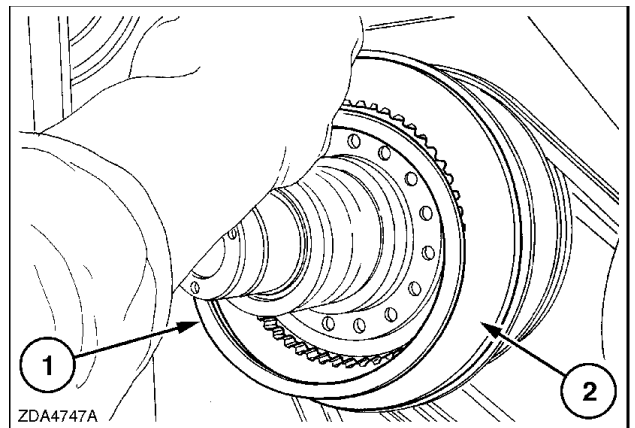
ZDA4745A 7

8. Remove cup washers (4).



ZDA4746A 8

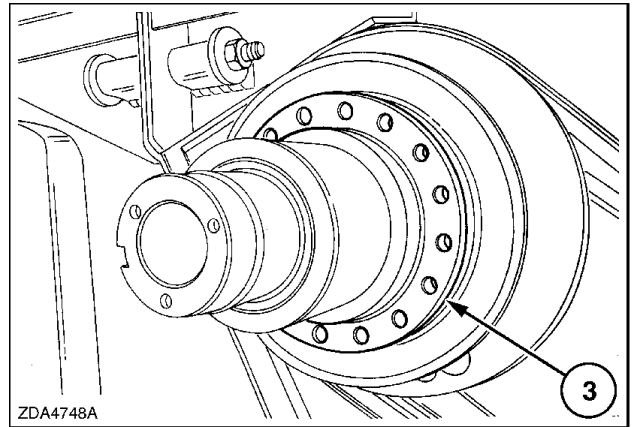
9. Remove shim (1).  
Remove plunger (2).



ZDA4747A 9

10. Check clutch body (3) for scoring.

**NOTE:** If clutch body (3) needs to be replaced remove the grain elevator before pulling the clutch body of shaft (4). Refer to **Grain elevator Chain - Remove (K.60.B.52.48 - F.10.A.10)**.



ZDA4748A 10