

TRANSFER COVER

< UNIT DISASSEMBLY AND ASSEMBLY >

[TRANSFER: TY21C]

- | | | | |
|---|---|---|-----|
| ① Oil seal | ② Transfer cover | ③ Filler plug | A |
| ④ Gasket | ⑤ Drain plug | ⑥ Oil seal | B |
| ⑦ O-ring | ⑧ Ring gear bearing adjusting shim (transfer cover side) | ⑨ Ring gear bearing (transfer cover side) | B |
| ⑩ Drive shaft oil seal | ⑪ Ring gear shaft | ⑫ Ring gear bearing (transfer case side) | C |
| ⑬ Ring gear bearing adjusting shim (transfer case side) | ⑭ Ring gear | ⑮ Baffle plate | C |
| ⑯ Transfer case | ⑰ Plug | ⑱ O-ring | DLN |
| ⑲ Oil seal | ⑳ Dowel pin | ㉑ Drive pinion | DLN |
| ㉒ Drive pinion adjusting shim | ㉓ O-ring | ㉔ Pinion bearing assembly | DLN |
| ㉕ Oil seal | ㉖ Dust cover | ㉗ Companion flange | E |
| ㉘ Pinion lock nut | | | F |
| Ⓐ Oil seal lip | Ⓑ Comply with the assembly procedure when tightening. Refer to DLN-72, "Disassembly and Assembly" . | | G |

: N·m (kg-m, in-lb)

: N·m (kg-m, ft-lb)

: Always replace after every disassembly.

: Apply gear oil.

: Apply anti-corrosive oil.

: Apply multi-purpose grease.

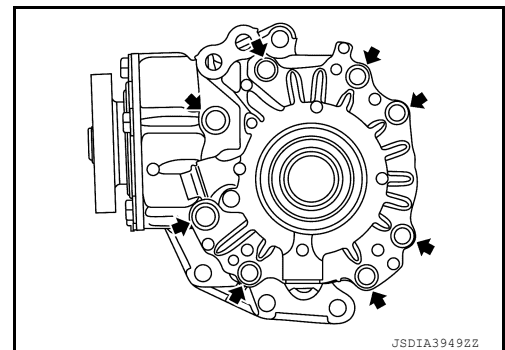
★: Select with proper thickness.

Disassembly and Assembly

INFOID:000000011220513

DISASSEMBLY

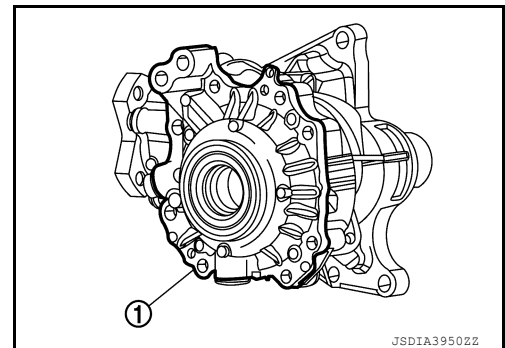
1. Remove transfer cover mounting bolts (←).



2. Lightly tap transfer cover ① with a plastic hammer to remove transfer cover.
3. Remove O-ring from transfer cover.

CAUTION:

 - Never use a tool.
 - Never damage transfer cover.

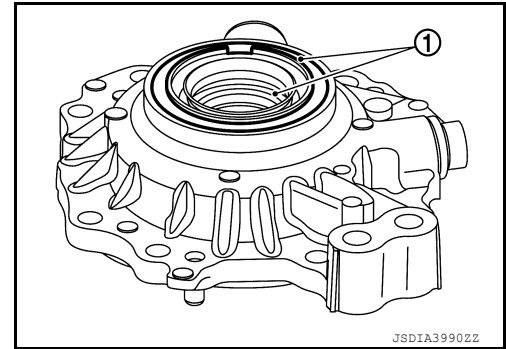


TRANSFER COVER

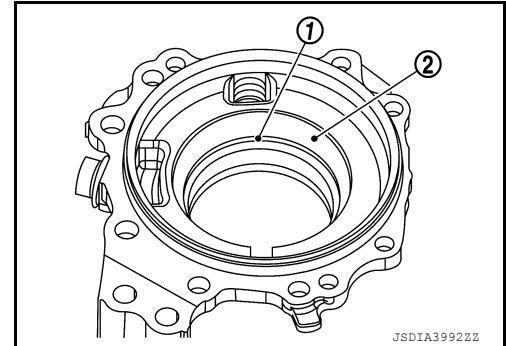
< UNIT DISASSEMBLY AND ASSEMBLY >

[TRANSFER: TY21C]

4. Lightly tap the metal part of oil seals ① with punch from back side of transfer cover to remove oil seals.
CAUTION:
When removing, never damage the transfer cover by scooping it out with a tool.



5. Remove the ring gear bearing adjusting shim (transfer cover side) ① and ring gear bearing outer race (transfer cover side) ② using drift (commercial service tool).
6. Remove drain plug and gasket.
7. Remove filler plug and gasket.
8. Perform inspection after disassembly. Refer to [DLN-65. "Inspection"](#).



ASSEMBLY

1. Select the ring gear bearing adjusting shim (transfer cover side). Refer to [DLN-74. "Adjustment"](#).
2. Install the selected ring gear bearing adjusting shim (transfer cover side) ① and ring gear bearing outer race (transfer cover side) ② using drift (commercial service tool).

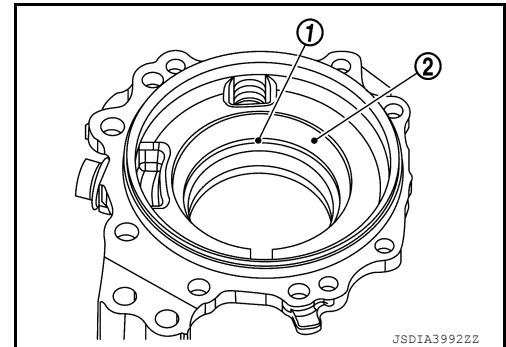
CAUTION:

- Never reuse ring gear bearing.
- Apply gear oil to the ring gear bearing.

3. Install gasket onto drain plug and install them to transfer cover.

CAUTION:

Never reuse gasket.



4. Install the transfer cover to the transfer case, and apply anti-corrosive oil onto thread and seats on the mounting bolts. Then tighten mounting bolts to the specified torque.

A : M10 bolt

B : M8 bolt

NOTE:

At this timing, O-ring installing to transfer cover is not necessary. Install O-ring after tooth contact is checked.

5. Check backlash, tooth contact, total preload and companion flange runout. Refer to [DLN-74. "Adjustment"](#).

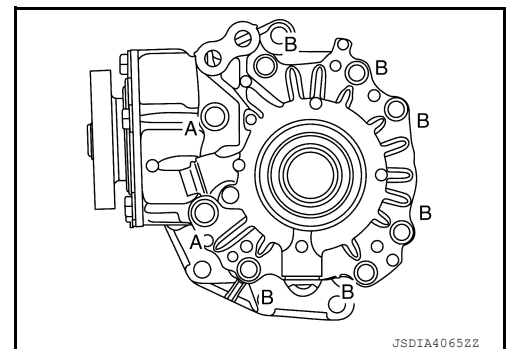
CAUTION:

Measure the total preload without oil seals of transfer cover and transfer case.

6. Remove transfer cover to install O-ring.
7. Apply multi-purpose grease lightly and evenly onto an O-ring, and install it to the transfer cover.

CAUTION:

- Never reuse O-ring.
- When installing O-ring, never use a tool.
- Never damage O-ring.



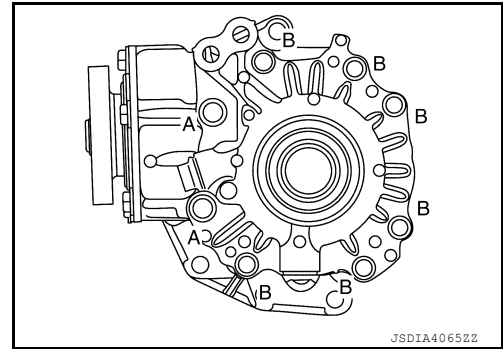
TRANSFER COVER

< UNIT DISASSEMBLY AND ASSEMBLY >

[TRANSFER: TY21C]

8. Install the transfer cover to the transfer case, and apply anti-corrosive oil onto thread and seats on the mounting bolts. Then tighten mounting bolts to the specified torque.

- A : M10 bolt
B : M8 bolt

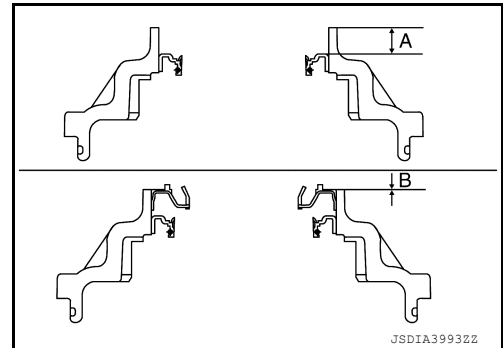


9. Using drift (commercial service tool), drive the transfer cover oil seals.

- A : 10.3 +0.6/-0 mm (0.406 +0.024/-0 in)
B : 0 +0.6/-0 mm (0 +0.024/-0 in)

CAUTION:

- When checking the total preload torque, measure it without the oil seal, then install the oil seal.
- Never reuse the oil seal.
- When installing, never incline oil seal.
- Apply multi-purpose grease onto oil seal lips, and gear oil onto the circumference of the oil seal.



10. Install gasket onto filler plug and install them to transfer cover.

CAUTION:

- Never reuse gasket.
- Install filler plug after oil is filled.

Inspection

INFOID:0000000011220515

INSPECTION AFTER DISASSEMBLY

Check items below. If necessary, replace them with new ones.

Transfer cover

Check the bearing mounting surface for wear, cracks and damages.

A
B
C
DLN
E
F
G
H
I
J
K
L
M
N
O
P

RING GEAR SHAFT

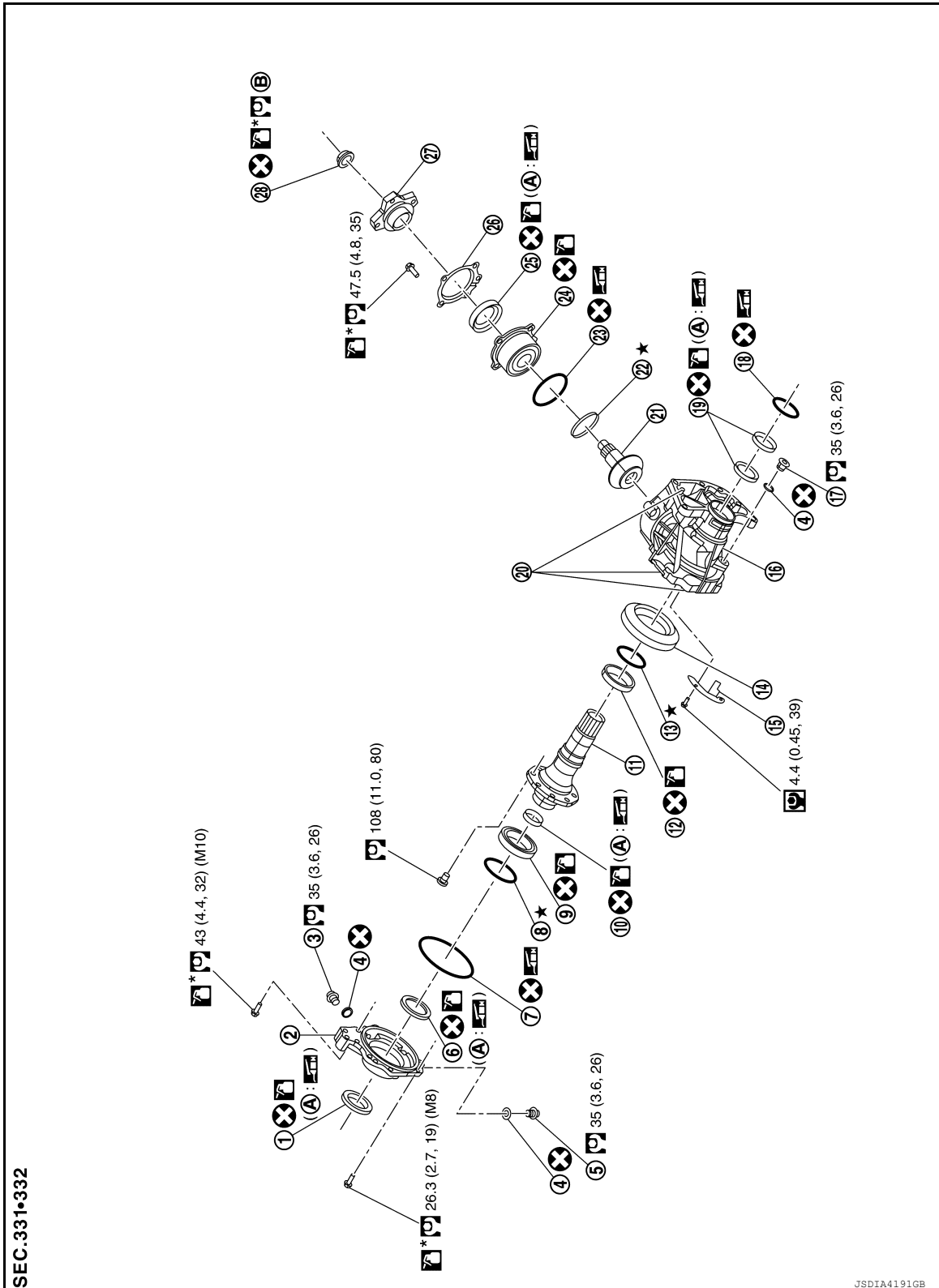
< UNIT DISASSEMBLY AND ASSEMBLY >

[TRANSFER: TY21C]

RING GEAR SHAFT

Exploded View

INFOID:000000011763367



SEC.331-332

JSDIA4191GB

- | | | |
|------------|------------------|---------------|
| ① Oil seal | ② Transfer cover | ③ Filler plug |
| ④ Gasket | ⑤ Drain plug | ⑥ Oil seal |