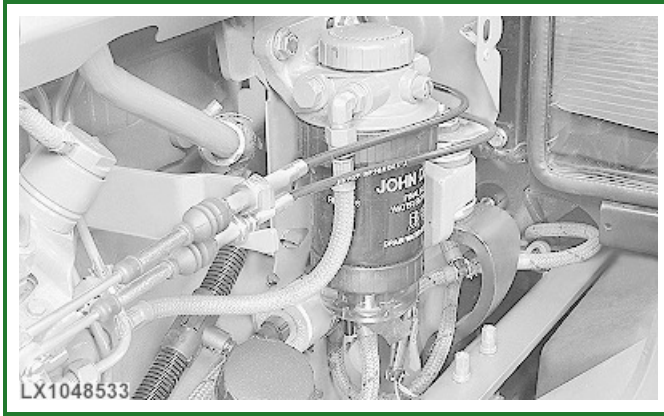


Bleed the Fuel System



LX1048533-UN: Bleed the Fuel System

⚠ CAUTION:

High-pressure fluid remaining in fuel lines can cause serious injury. Do not disconnect or attempt to repair fuel lines, sensors or any other components between injection pump and nozzles.

The fuel system must be bled whenever the fuel tank has been run dry or the fuel filters have been replaced.

Turn key in main switch to the right to the first switch position so that the fuel transfer pump is operating. Keep the pump running for approx. 40 seconds.

OU12401,0001C58-19-20090618

Lubricate All Lubricating Points

If the tractor has been washed with high-pressure water, lubricate all lubricating points.

LX,OWART 002327-19-19920401