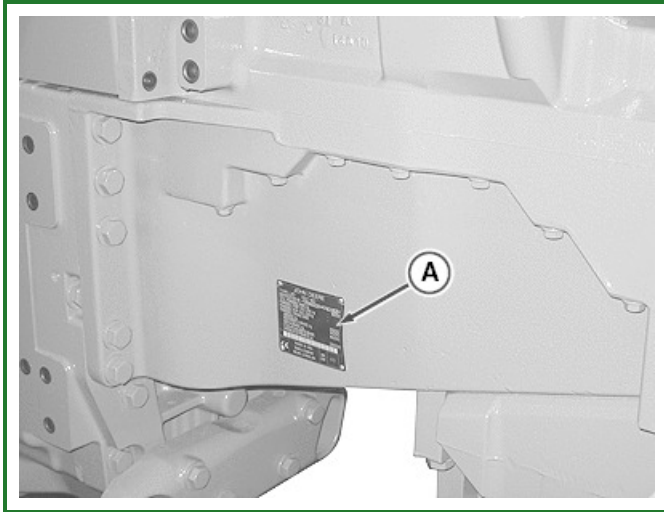


Record Product Identification Number



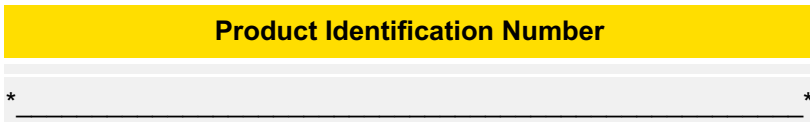
RXA0107048-UN: Record Product Identification Number

LEGEND:

A - Identification Data Plate

Identification data plate (A) is along right-hand tractor frame.

-: Identification Data Plate



PRODUCT IDENTIFICATION NUMBER (PIN): consist of 17 positions without spaces, dashes or other interruptions as follows:

Positions 1-3: World Manufacturer Code (WMC) (e.g. 1RW).

Positions 4-7: is the numeric portion of the tractor model number.

Position 8: Model Identifier suffix (Additional machine information).

Position 9: is a check letter calculated based on the values and positions of the other sixteen characters.

Position 10: Calendar Year of Manufacture may be a letter or a number which reflects the calendar year (not model year) of manufacture. The value of this character is specified in Table below.

-: Characters used to designate year of manufacture or Model Year

Characters Used To Designate Year Of Manufacture Or Model Year			
Year	Code	Year	Code
2010	A	2012	C
2011	B	2013	D

Position 11: Transmission Option Code indicated in the table.

-: Configuration and Transmission Option Codes Used in Position 11

Configuration and Transmission Option Codes Used in Position 11	
D	IVT™ / AUTOPOWR™
P	POWERSHIFT

Positions 12: Additional Manufacturing or Product Information provide additional information about the product and when it was built. If the tractor is a track tractor, the character in position 12 will be a "9". Otherwise the character in position 12 will be a numerical zero, "0".

Positions 13-17: Sequential Serial Number will be a serialized number uniquely identifying individual tractors bearing the same model designation.

Additionally: An asterisk (*) shall immediately precede the first character and immediately follow the last character of the PIN to discourage tampering or altering of the PIN.

OURX935,00001AF-19-20101210