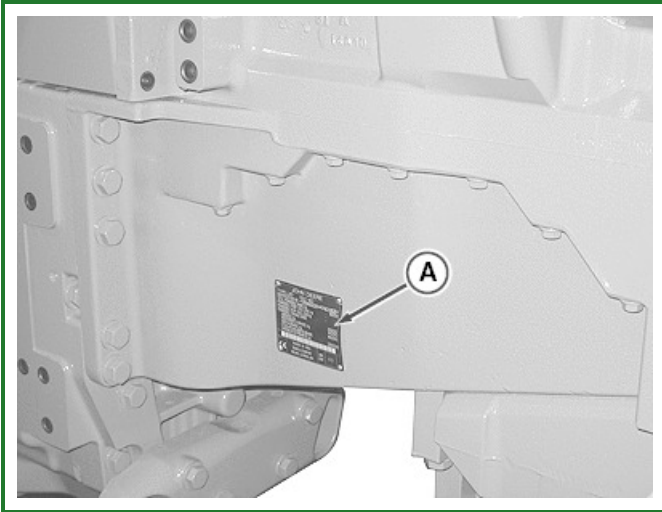


## Record Product Identification Number



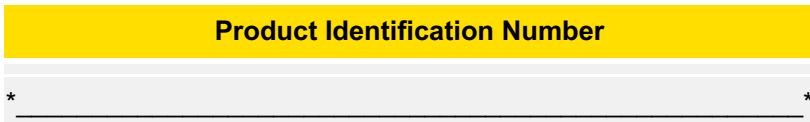
### RXA0107048-UN: Record Product Identification Number

**LEGEND:**

A - Identification Data Plate

Identification data plate (A) is along right-hand tractor frame.

-: Identification Data Plate



PRODUCT IDENTIFICATION NUMBER (PIN): consist of 17 positions without spaces, dashes or other interruptions as follows:

**Positions 1-3:** World Manufacturer Code (WMC) (e.g. 1RW).

**Positions 4-7:** is the numeric portion of the tractor model number.

**Position 8:** Model Identifier suffix (Additional machine information).

**Position 9:** is a check letter calculated based on the values and positions of the other sixteen characters.

**Position 10:** Calendar Year of Manufacture may be a letter or a number which reflects the calendar year (not model year) of manufacture. The value of this character is specified in Table below.

-: Characters used to designate year of manufacture or Model Year

<b>Characters Used To Designate Year Of Manufacture Or Model Year</b>					
Year	Code	Year	Code	Year	Code
2011	B	2012	C	2013	D

**Position 11:** Transmission Option Code indicated in the table.

-: Configuration and Transmission Option Codes Used in Positions 8 and 11

Configuration and Transmission Option Codes Used in Position 11

---

D	IVT™ / AUTOPOWR™
P	POWERSHIFT

**Positions 12:** Additional Manufacturing or Product Information provide additional information about the product and when it was built. If the tractor is a track tractor, the character in position 12 will be a “9”. Otherwise the character in position 12 will be a numerical zero, “0”.

**Positions 13-17:** Sequential Serial Number will be a serialized number uniquely identifying individual tractors bearing the same model designation.

**Additionally:** An asterisk (\*) shall immediately precede the first character and immediately follow the last character of the PIN to discourage tampering or altering of the PIN.

OURX935,00001AB-19-20101210