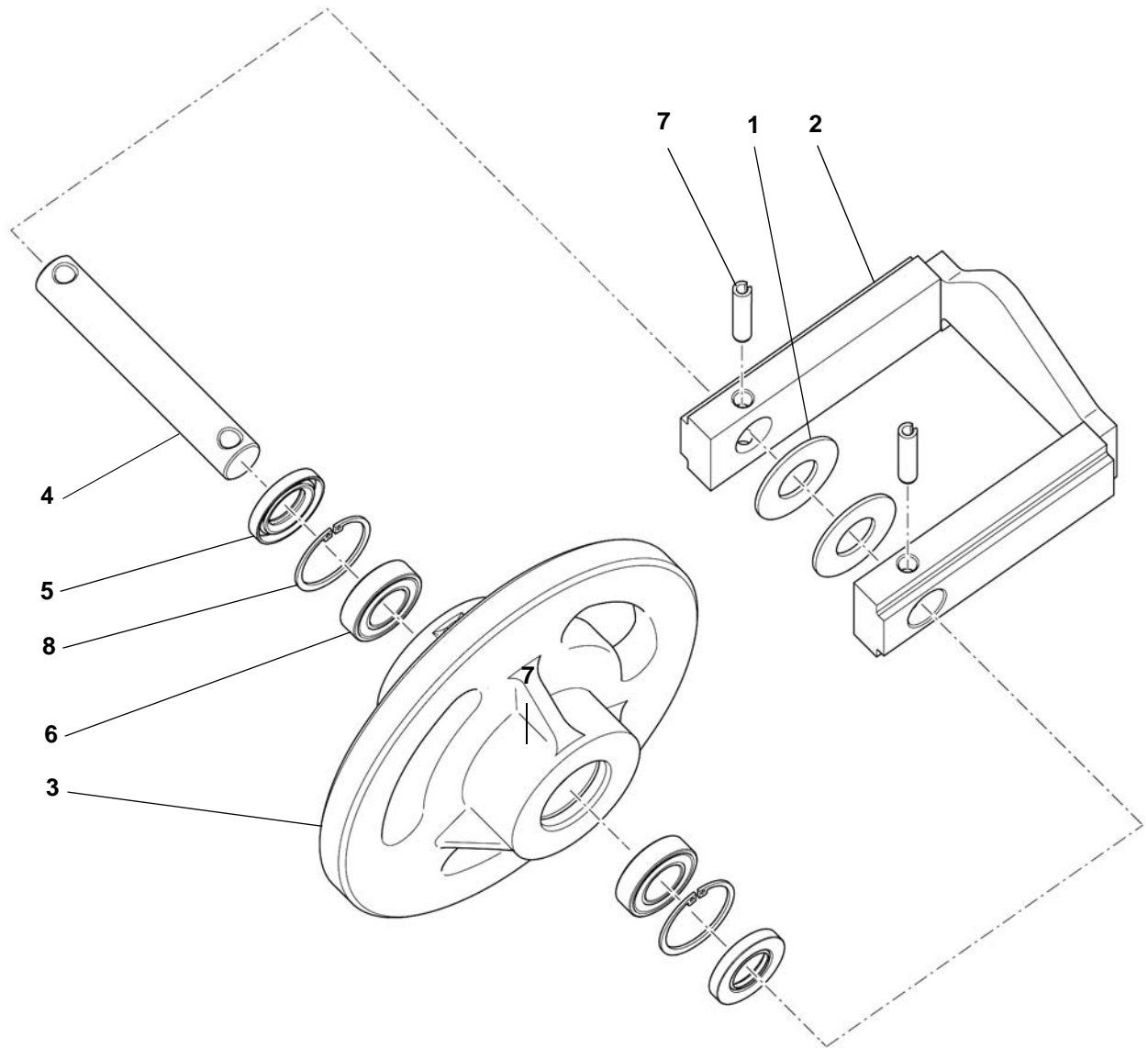


# TRACK IDLER

## Parts Identification

- 1. Washer
- 2. Tensioner
- 3. Idler
- 4. Shaft
- 5. Seal
- 6. Bearing
- 7. Pin
- 8. Ring



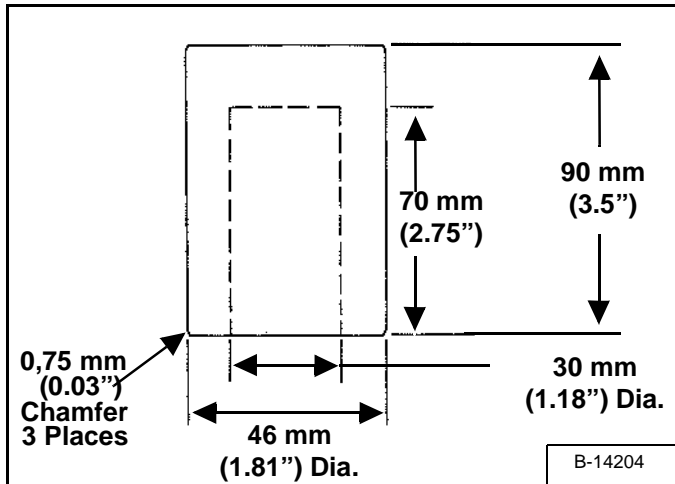
S8280

## TRACK IDLER (CONT'D)

### Disassembly

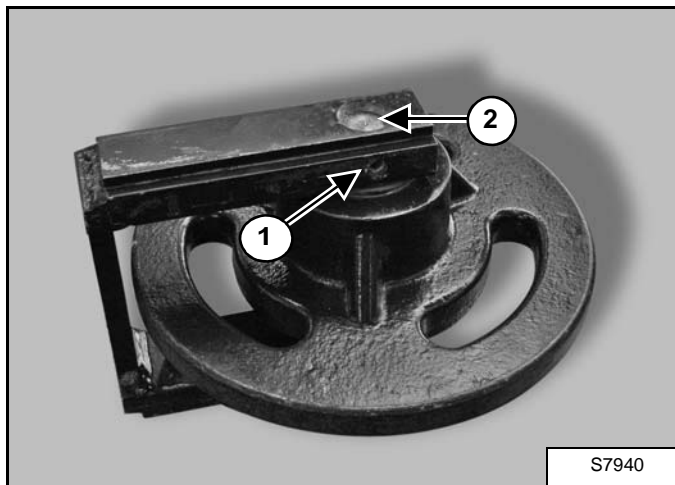
The following tools must be fabricated for this procedure:

Figure 30-50-1



1. Driver Tool - see [Figure 30-50-1].

Figure 30-50-2

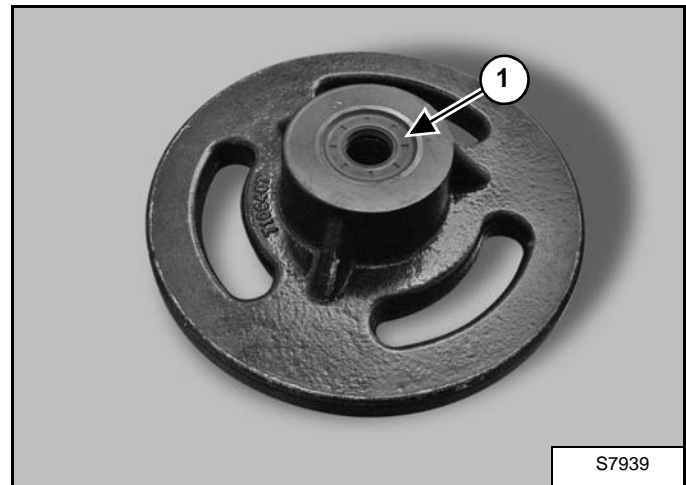


Remove the roll pin (Item 1) [Figure 30-50-2] from each end of the shaft.

Using a suitable driver, gently tap the shaft (Item 2) [Figure 30-50-2] out of the track idler and bracket.

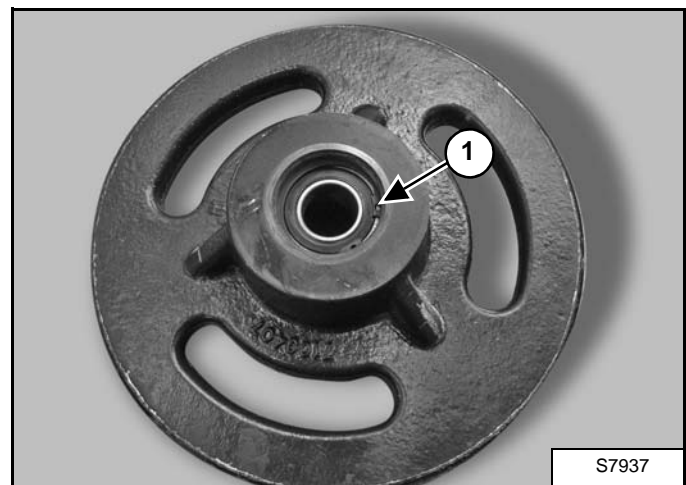
Remove the track idler from the bracket.

Figure 30-50-3



Remove the seal (Item 1) [Figure 30-50-3] from both sides of the idler.

Figure 30-50-4

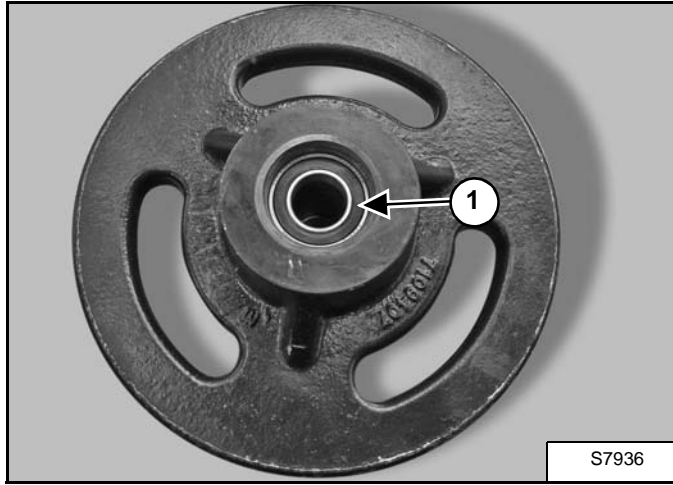


Remove the snap ring (Item 1) [Figure 30-50-4] from both sides of the idler.

## TRACK IDLER (CONT'D)

### Disassembly (Cont'd)

Figure 30-50-5

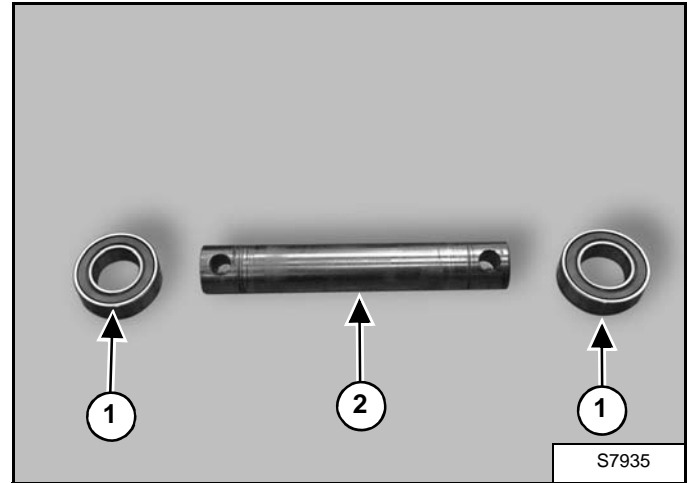


Using a suitable bearing puller, remove the bearing (Item 1) [Figure 30-50-5] from both sides of the idler.

### Assembly

Clean all parts in solvent and dry with compressed air.

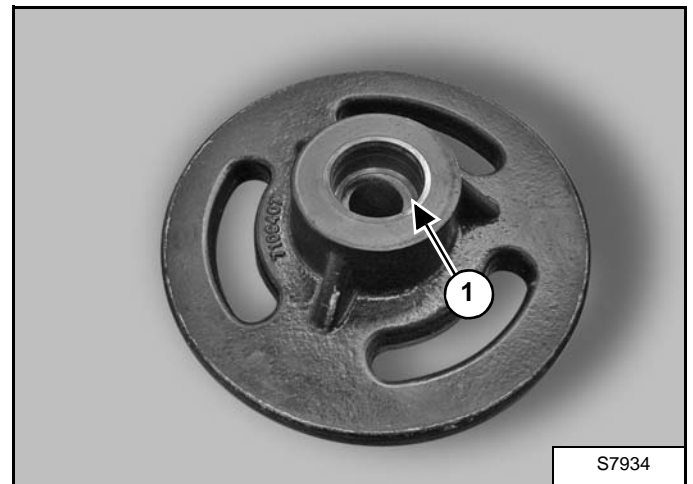
Figure 30-50-6



Inspect the bearings (Item 1) and shaft (Item 2) [Figure 30-50-6] for wear or damage. Replace any worn or damaged parts.

The bearings are sealed. If the bearings do not roll smoothly, or if the seals are damaged, replace the bearings.

Figure 30-50-7



Remove all paint and corrosion from the bearing and seal surface (Item 1) [Figure 30-50-7] on both sides of the idler. If necessary, replace the track idler.

**NOTE:** Left-Hand Side Idler and Right-Hand Side Idler are different. For ordering, a different P/N exists for each side.

## TRACK IDLER (CONT'D)

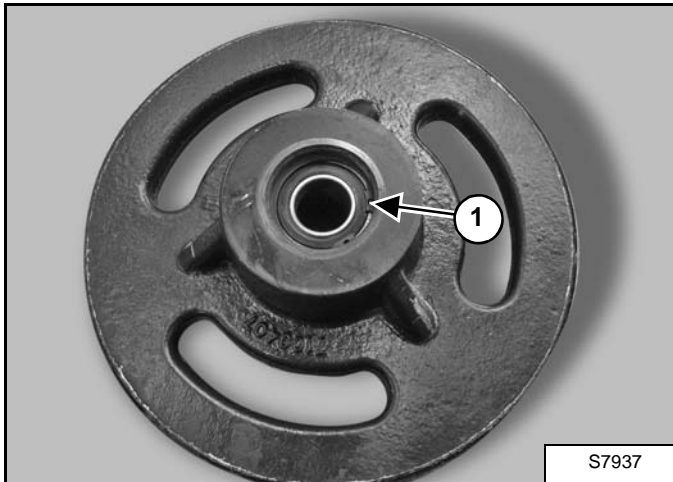
### Assembly (Cont'd)

Figure 30-50-8



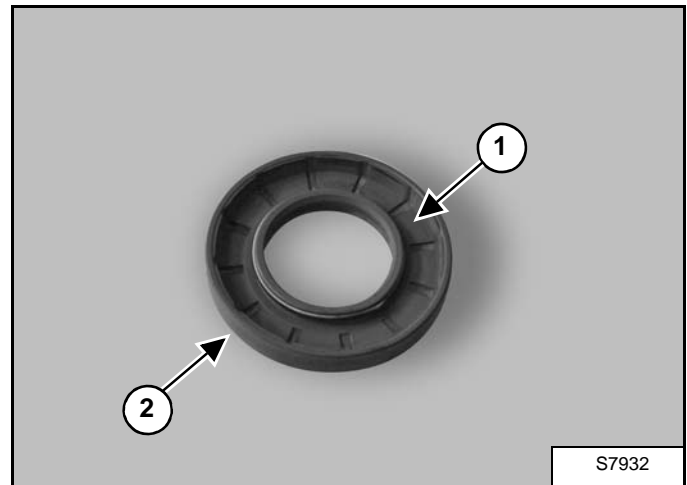
Using a press or driving tool, install the bearing in the idler [Figure 30-50-8] on both sides of the idler.

Figure 30-50-9



Install the snap ring (Item 1) [Figure 30-50-9] on both sides of the idler.

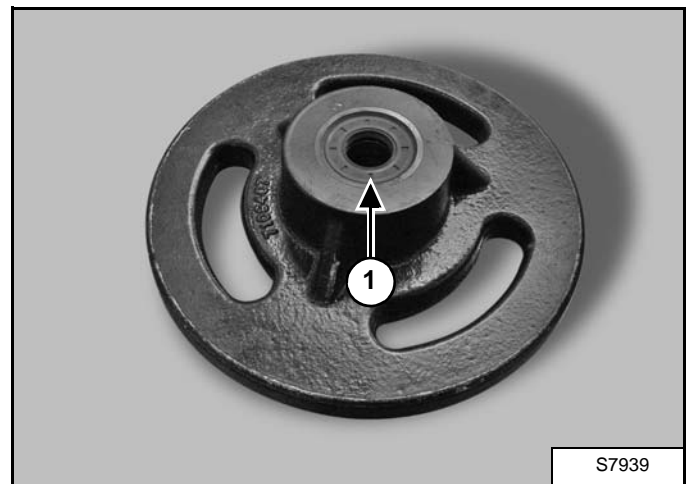
Figure 30-50-10



Apply assembly lube to the inside diameter (Item 1) [Figure 30-50-10] of the seal.

Apply a small bead of high temperature silicone sealant around the flange surface (Item 2) [Figure 30-50-10] of the seal.

Figure 30-50-11

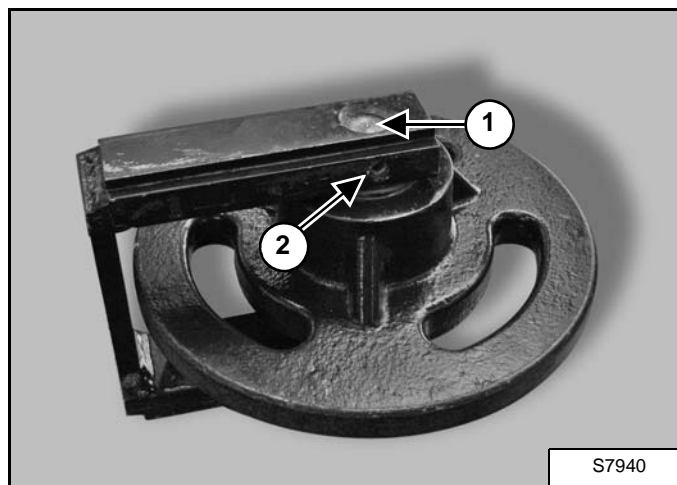


Using the driving tool, install the seal (Item 1) [Figure 30-50-11] on both sides of the idler.

## TRACK IDLER (CONT'D)

### Assembly (Cont'd)

Figure 30-50-12



Apply assembly lube to the shaft.

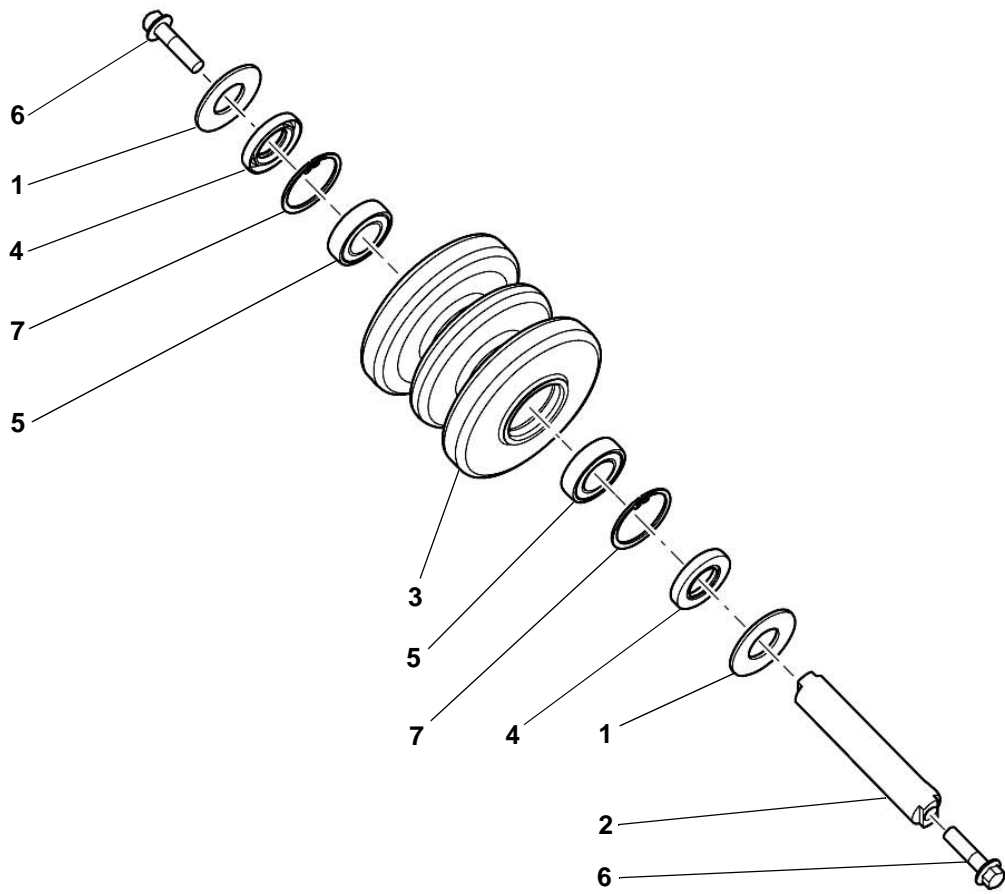
Using a soft faced hammer, gently tap the shaft (Item 1) **[Figure 30-50-12]** in the idler and bracket.

Install the roll pin (Item 2) **[Figure 30-50-12]** on each end of the shaft.

# TRACK ROLLER

## Parts Identification

- 1. Washer
- 2. Shaft
- 3. Roller
- 4. Seal
- 5. Bearing
- 6. Screw
- 7. Ring



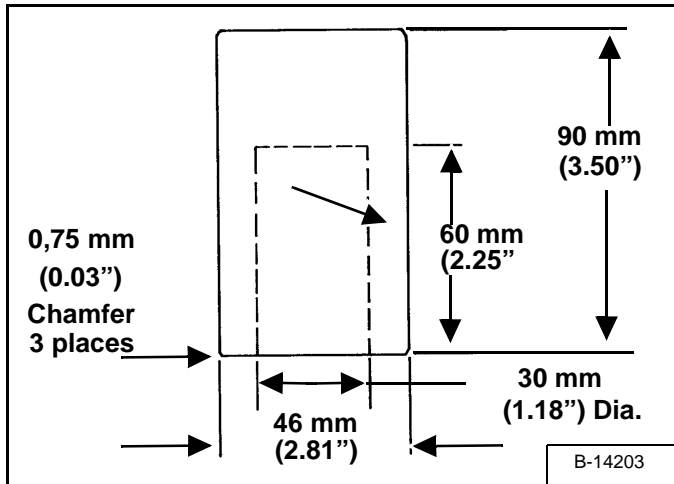
S8444

## TRACK ROLLER (CONT'D)

### Disassembly

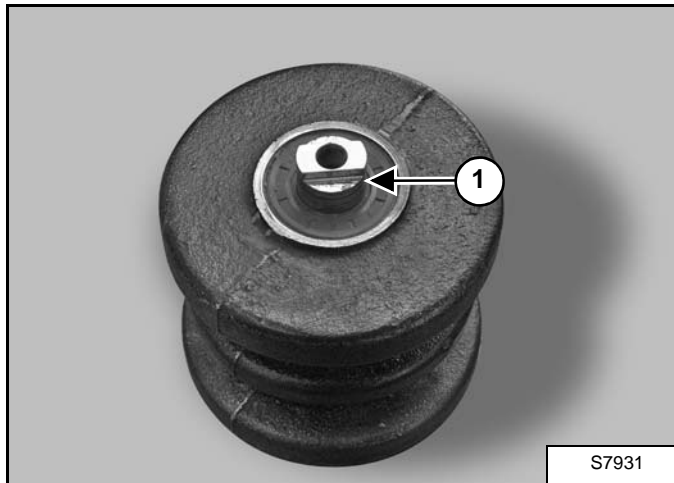
The following tools must be fabricated for this procedure:

Figure 30-60-1



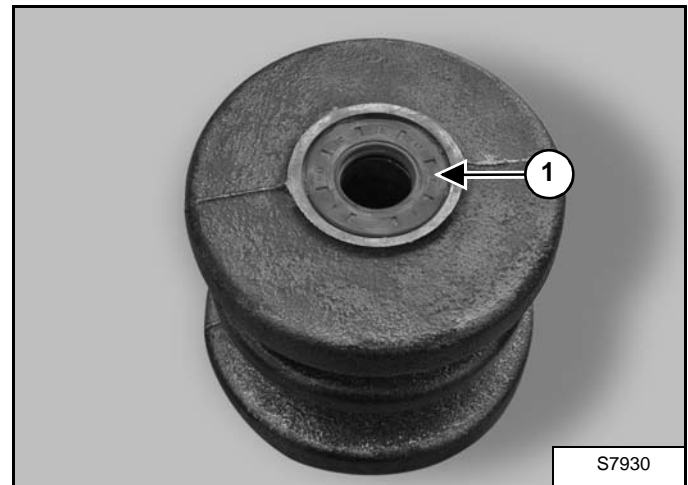
1. Driver Tool - see [Figure 30-60-1].

Figure 30-60-2



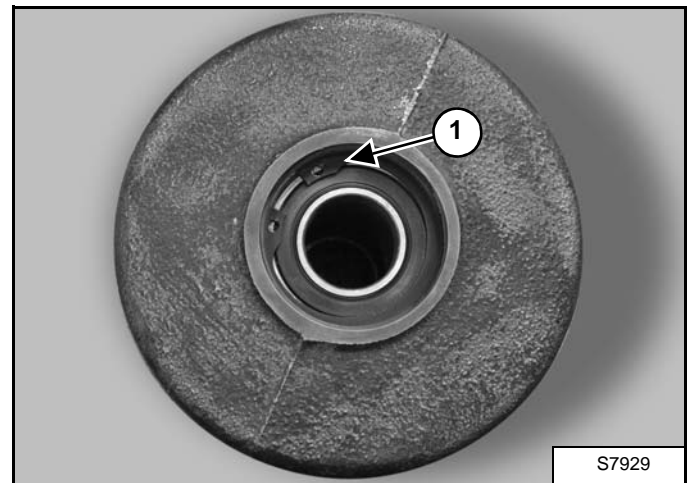
Using a soft faced hammer, gently tap the shaft (Item 1) [Figure 30-60-2] from the track roller.

Figure 30-60-3



Remove the seal (Item 1) [Figure 30-60-3] from both sides of the track roller.

Figure 30-60-4



Remove the snap ring (Item 1) [Figure 30-60-4] from both sides of the track roller.