

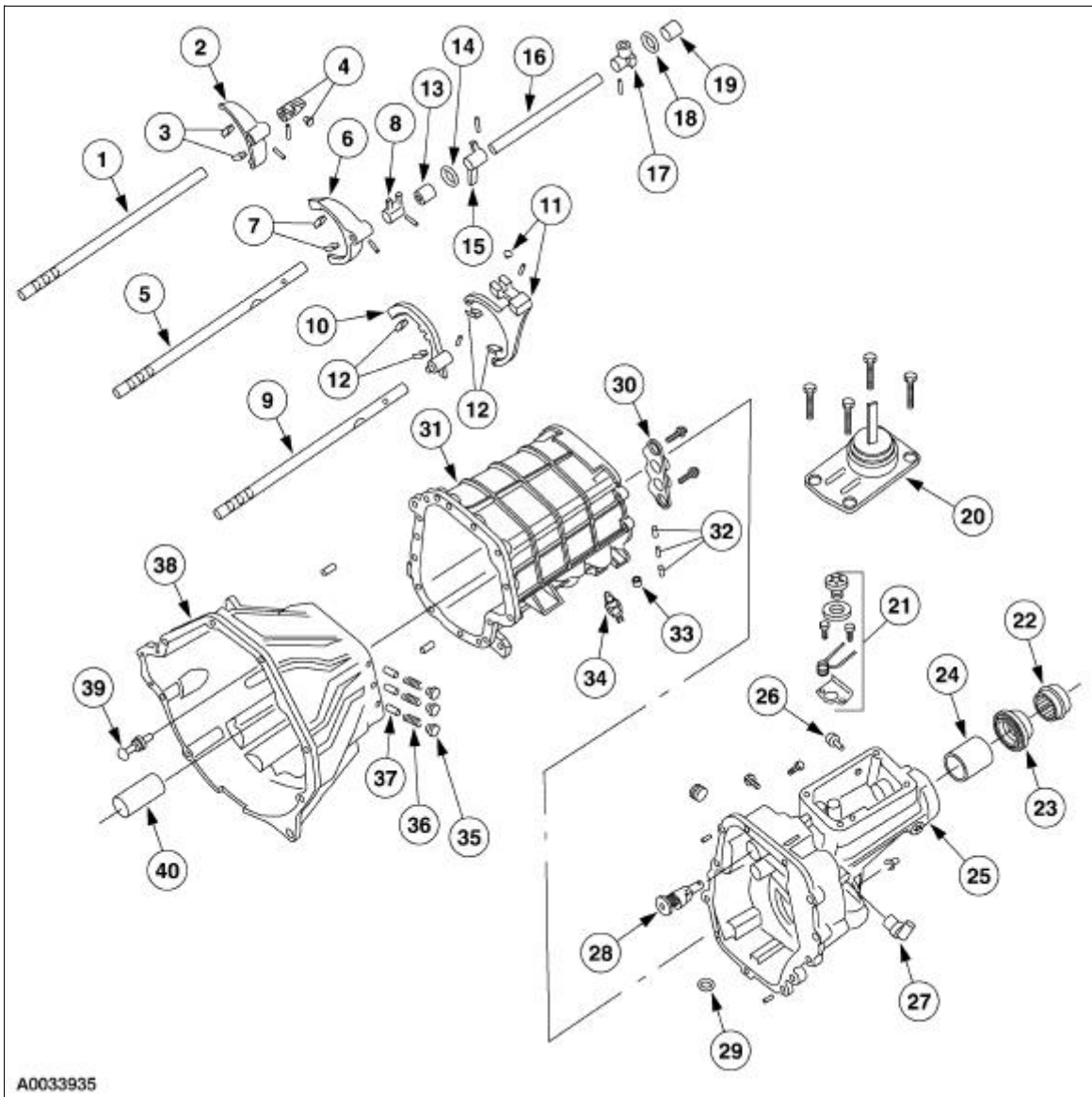
A0033515

Item	Part Number	Description
1	7052	Input shaft seal
2	7L172	Shim
3	7025	Input shaft front bearing and cup
4	7017	Input shaft
5	7025	Input shaft pocket bearing
6	—	Input shaft thrust bearing
7	—	Input shaft thrust washer

8	7064	Retaining ring
9	7124	Third/fourth gear synchronizer assembly
10	7107	Third/fourth gear synchronizer blocking ring
11	—	Third/fourth gear synchronizer spring (part of 7124)
12	—	Third/fourth gear synchronizer insert (part of 7124)
13	—	Third/fourth gear synchronizer hub (part of 7124)
14	—	Third/fourth gear synchronizer sleeve (part of 7124)
15	7B340	Third gear
16	7B369	Third gear needle bearing
17	—	Third gear bushing
18	—	Check ball
19	—	Thrust washer
20	—	Second gear needle bearing
21	7102	Second gear
22	7175	First/second gear synchronizer inner cone
23	7174	First/second gear synchronizer outer cone
24	7061	Output shaft
25	—	Retaining ring
26	7124	First/second gear synchronizer assembly
27	7107	First/second gear synchronizer blocking ring
28	—	First/second gear synchronizer spring (part of 7124)
29	—	First/second gear synchronizer hub (part of 7124)
30	—	First/second gear synchronizer insert (part of 7124)
31	—	First/second gear synchronizer sleeve (part of 7124)
32	7127	First gear needle bearing
33	7100	First gear
34	—	Reverse clutch cone
35	7124	Reverse gear synchronizer assembly
36	7107	Reverse gear synchronizer blocking ring
37	—	Reverse gear synchronizer spring (part of 7124)
38	—	Reverse gear synchronizer hub (part of 7124)
39	—	Reverse gear synchronizer insert (part of 7124)
40	—	Reverse gear synchronizer sleeve (part of 7124)
41	—	Retaining ring
42	7N168	Reverse needle bearing
43	7C238	Reverse driven gear
44	—	Reverse gear bushing

45	—	Selector gate
46	7025	Mainshaft rear bearing and cup
47	7K316	Mainshaft fifth gear
48	—	Retaining ring
49	7H150	Output shaft speed (OSS) sensor
50	—	Retaining ring
51	7L172	Shim
52	7025	Countershaft front bearing and cup
53	7113	Countershaft
54	7025	Countershaft rear bearing and cup
55	—	Thrust bearing
56	7144	Countershaft fifth gear
57	—	Countershaft fifth gear needle bearing
58	—	Countershaft fifth gear bearing spacer
59	—	Retaining ring
60	7124	Fifth gear synchronizer assembly
61	7107	Fifth gear synchronizer blocking ring
62	—	Fifth gear synchronizer spring (part of 7124)
63	—	Fifth gear synchronizer hub (part of 7124)
64	—	Fifth gear synchronizer insert (part of 7124)
65	—	Fifth gear synchronizer sleeve (part of 7124)
66	—	Fifth gear clutch cone
67	—	Retaining ring
68	—	Reverse idler gear support
69	7140	Reverse idler gear shaft
70	7141	Reverse idler gear
71	7E169	Reverse idler gear needle bearing
72	—	Reverse idler gear bearing spacer

## Transmission Case and Shift Components — Disassembled View



A0033935

Item	Part Number	Description
1	7358	First/second shift rail
2	7239	First/second shift fork
3	7L082	Shift fork inserts
4	—	First/second shift finger
5	7241	Third/fourth shift rail
6	7230	Third/fourth shift fork
7	7L082	Shift fork inserts
8	—	Third/fourth shift finger
9	7242	Fifth/reverse shift rail
10	—	Reverse gear shift fork
11	—	Fifth gear shift fork
12	7L082	Shift fork inserts
13	—	Shift arm bearing
14	—	Spacer
15	—	Shift arm selector inhibitor

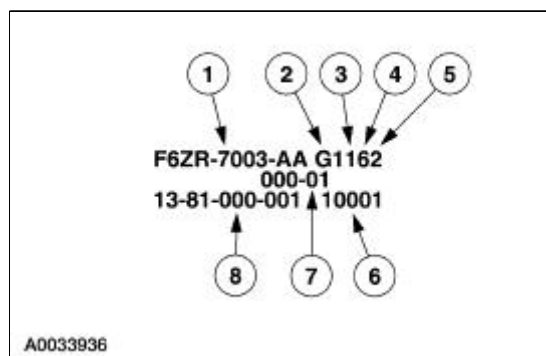
16	7240	Main shift rail
17	7F018	Gearshift offset lever
18	—	Spacer
19	—	Bearing
20	7210	Gearshift lever
21	—	Gearshift plate and spring
22	—	Shipping seal
23	7052	Output shaft seal
24	—	Extension housing bushing
25	7A039	Extension housing
26	7034	Vent
27	—	Vehicle speed sensor (VSS)
28	—	Fifth/reverse gear lockout
29	7L027	Magnet
30	7K201	Shift interlock plate
31	7005	Transmission main case
32	—	Interlock pins
33	7A010	Drain plug
34	15520	Reverse lamp switch
35	—	Detent plug
36	—	Detent spring
37	—	Detent
38	6392	Clutch housing
39	7B602	Ball stud
40	—	Bearing

### Transmission Identification

The transmission identification tag is located under the lower bolt that retains the extension housing to the main case.

The five speed overdrive (TR3650) transmission is available for the Mustang 4.6L (2V).

### Transmission Identification



A0033936

	<b>Part</b>	
--	-------------	--

<b>Item</b>	<b>Number</b>	<b>Description</b>
1	—	Transmission assembly number
2	—	Build date code—month
3	—	Build date code—day
4	—	Build date code—year
5	—	Shift number
6	—	Serial number
7	—	Service repair code
8	—	Identification number located on left lower side of transmission case

---

## Manual Transmission

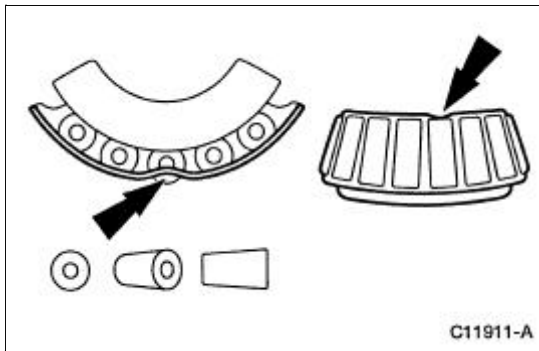
Refer to [Section 308-00](#) .

---

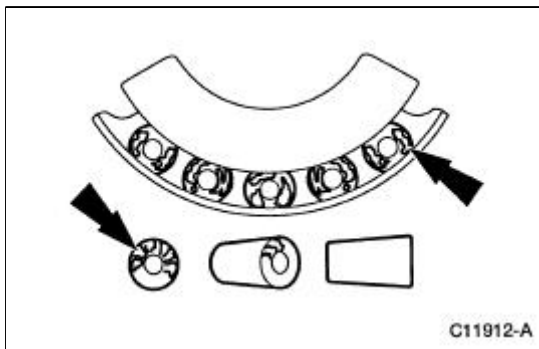
## Bearings — Inspection

**NOTE:** If any of the following conditions exist, install a new bearing.

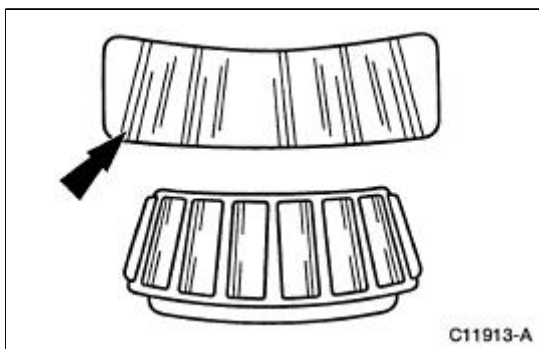
1. Inspect the bearing for a bent cage.



2. Inspect bearings for galling (metal smears on roller ends).
  - Galling is caused by overheating, poor lubrication or an overload situation.
  - If galling is found, install a new bearing and inspect the seals.

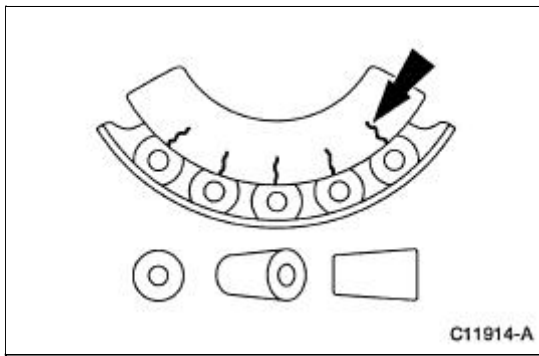


3. Inspect the bearing for brinelling (surface indentations in the raceway).

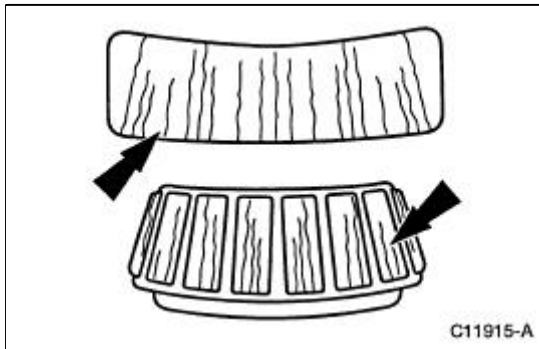


4. Inspect bearing for cracked inner race.

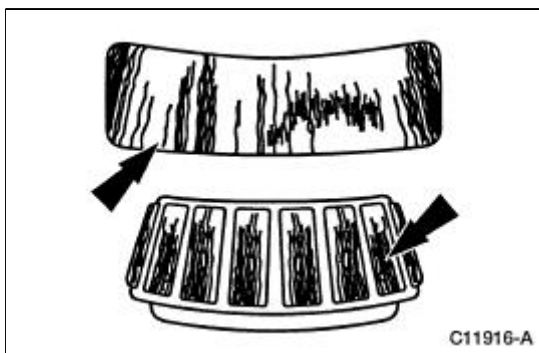




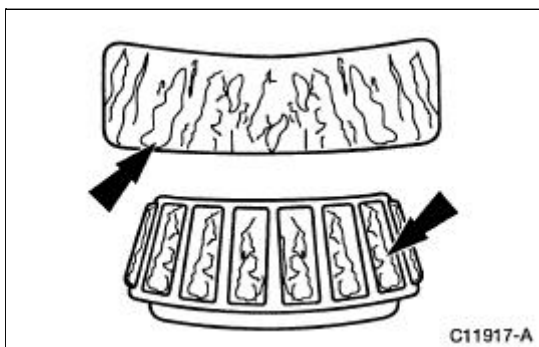
5. Inspect the bearing and raceway for etching.
  - If etching is present, inspect the seals.



6. Inspect the bearing for heat discoloration (dark blue).
  - If heat discoloration is evident, check the bearing and race for loss of temper. Draw a file across the component. If the file cuts the metal, there is a loss of temper.



7. Inspect the bearing for fatigue spalling (metal flaking).



---


## Seal

### Special Tool(s)

 ST2199-A	Installer, Transmission Extension Housing Oil Seal 308-227 (T94P-7657-A)
 ST1185-A	Slide Hammer 100-001 (T50T-100-A)
 ST2200-A	Remover, Bushing 307-001 (TOOL-1175-AC) or Equivalent

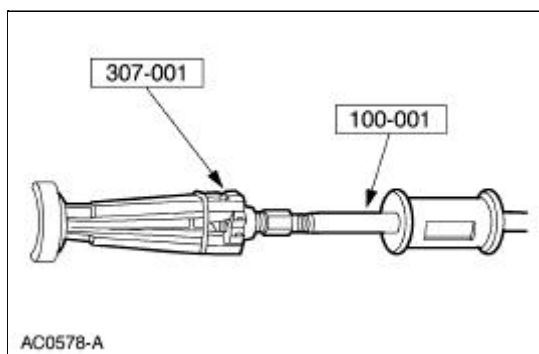
### Removal

1. With the vehicle in NEUTRAL, raise and support the vehicle. For additional information, refer to [Section 100-02](#).

2.  **CAUTION: Index-mark the driveshaft flange and pinion flange, and the driveshaft slip yoke and transmission output shaft.**

Remove the driveshaft. For additional information, refer to [Section 205-01](#).

3. Using the special tools, remove the extension housing fluid seal.



### Installation

1. Using the special tool, install the extension housing fluid seal.