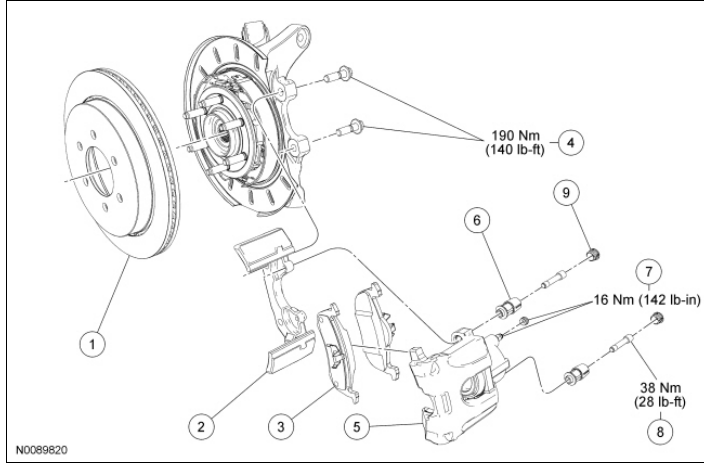


**Disc Brake System -- Exploded View**

**Rear Brake Disc Components**



Item	Part Number	Description
1	2C026	Brake disc
2	2B582	Brake caliper anchor plate kit
3	--	Brake pad (part of kit 2200)
4	W707292	Brake caliper anchor plate bolts (2 required)
5	--	Brake caliper (part of kit 2552 RH/2553 LH)
6	--	Brake caliper guide pin bushing (2 required) (part of kits 2C534, 2552, 2553 and 2200)
7	2C563	Bleeder screw and cap (also part of kits 2552 and 2553)
8	--	Brake caliper guide pin (2 required) (part of kit 2C534)
9	--	Brake caliper guide pin cap (2 required) (part of kit 2C534)

1. For additional information, refer to the procedures in this section.



**Brake Pads**

## Material

Item	Specification
High Performance DOT 3 Motor Vehicle Brake Fluid PM-1-C (US); CPM-1-C (Canada)	WSS-M6C62-A or WSS-M6C65-A1
Metal Brake Parts Cleaner PM-4-A or PM-4-B (US); CPM-4 (Canada)	--

**Removal**

**⚠ WARNING:** Do not use any fluid other than clean brake fluid meeting manufacturer's specification. Additionally, do not use brake fluid that has been previously drained. Following these instructions will help prevent system contamination, brake component damage and the risk of serious personal injury.

**⚠ WARNING:** Carefully read cautionary information on product label. For EMERGENCY MEDICAL INFORMATION seek medical advice. In the USA or Canada on Ford/Motorcraft products call: 1-800-959-3673. For additional information, consult the product Material Safety Data Sheet (MSDS) if available. Failure to follow these instructions may result in serious personal injury.

**⚠ WARNING:** Always install new brake shoes or pads at both ends of an axle to reduce the possibility of brakes pulling vehicle to one side. Failure to follow this instruction may result in uneven braking and serious personal injury.

**NOTICE:** Do not spill brake fluid onto painted or plastic surfaces or damage to surface may occur. If brake fluid is spilled onto a painted or plastic surface, immediately wash the surface with water.

1. Check the brake fluid level in the brake master cylinder reservoir.
  - If required, remove the fluid until the brake master cylinder reservoir is half full.
2. Remove the wheel and tire. For additional information, refer to [Section 204-04](#).
3. **NOTICE:** Do not allow the brake caliper to hang by the flexible brake hose or damage to the hose may occur.

Remove the 2 brake caliper guide pin caps and bolts and position the caliper and brake pad assembly aside.

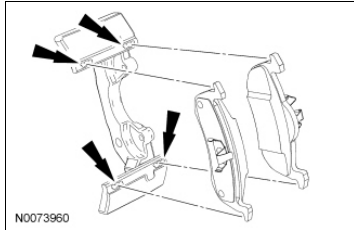
- Support the caliper using mechanic's wire.
  - Remove and discard the guide pin bushings.
  - Inspect the guide pin threads for damage, install new guide pin(s) as necessary.
4. Remove the brake pads from the caliper.
  5. Inspect the brake pads for wear or contamination and install new pads as necessary. For additional

information, refer to General Procedures in [Section 206-00](#) .

6. Using a C-clamp and a worn brake pad, press the piston into the caliper.
7. Inspect the brake disc and resurface or install a new brake disc as necessary. For additional information, refer to General Procedures in [Section 206-00](#) .

### Installation

1. Clean, dry and inspect the brake caliper anchor plate. Apply equal amounts of the supplied yellow lubricant to the 4 brake pad contact points on the anchor plate as shown.



2. **NOTICE: Do not apply lubricant to guide pin threads or incorrect tightening of the guide pins may result.**

Install new brake hardware as follows:

- Apply equal amounts of the supplied white lubricant to the inside of the guide pin bushings.
  - Install the guide pin bushings into the caliper bores.
  - Install the guide pins into the bushings.
3. Install the brake pads to the caliper.
  4. Position the caliper onto the anchor plate and install the 2 brake caliper guide pin bolts.
    - To install, tighten to 38 Nm (28 lb-ft).
    - Clean and dry guide pin threads as necessary.
  5. Fill the master cylinder with clean, specified brake fluid.
  6. Install the wheel and tire. For additional information, refer to [Section 204-04](#) .
  7. Apply the brake several times to verify correct brake operation.
-



**Brake Caliper**

## Material

Item	Specification
High Performance DOT 3 Motor Vehicle Brake Fluid PM-1-C (US); CPM-1-C (Canada)	WSS-M6C62-A or WSS-M6C65-A1

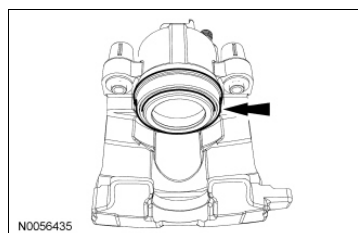
**Removal and Installation**

**⚠ WARNING:** Do not use any fluid other than clean brake fluid meeting manufacturer's specification. Additionally, do not use brake fluid that has been previously drained. Following these instructions will help prevent system contamination, brake component damage and the risk of serious personal injury.

**⚠ WARNING:** Carefully read cautionary information on product label. For EMERGENCY MEDICAL INFORMATION seek medical advice. In the USA or Canada on Ford/Motorcraft products call: 1-800-959-3673. For additional information, consult the product Material Safety Data Sheet (MSDS) if available. Failure to follow these instructions may result in serious personal injury.

**NOTICE:** Do not spill brake fluid onto painted or plastic surfaces or damage to surface may occur. If brake fluid is spilled onto a painted or plastic surface, immediately wash the surface with water.

1. Remove the wheel and tire. For additional information, refer to [Section 204-04](#).
2. Remove the brake hose flow bolt and disconnect the hose.
  - Remove and discard the copper washers.
  - To install, tighten to 40 Nm (30 lb-ft).
3. Remove the 2 brake caliper guide pin caps and bolts.
  - Inspect the guide pin threads for damage, install a new guide pin(s) as necessary.
  - To install, tighten to 38 Nm (28 lb-ft).
  - Clean and dry guide pin threads as necessary.
4. Remove the brake caliper and remove the brake pads from the caliper.
5. Inspect the disc brake caliper dust boot for leaks and/or damage.
  - If leaks or damage are found, install a new brake caliper.



6. **NOTICE:** Do not apply lubricant to guide pin threads or incorrect tightening of the guide pins may result.

To install, reverse the removal procedure.

- Install new guide pin bushings.
- Apply supplied white lubricant to the inside of the guide pin bushings.

7. Bleed the brake caliper. For additional information, refer to Section 206-00 for Component Bleeding.

---

**Brake Caliper Anchor Plate**

## Material

Item	Specification
High Performance DOT 3 Motor Vehicle Brake Fluid PM-1-C (US); CPM-1-C (Canada)	WSS-M6C62-A or WSS-M6C65-A1
Metal Brake Parts Cleaner PM-4-A or PM-4-B (US); CPM-4 (Canada)	--

**Removal and Installation**

**⚠ WARNING: Do not use any fluid other than clean brake fluid meeting manufacturer's specification. Additionally, do not use brake fluid that has been previously drained. Following these instructions will help prevent system contamination, brake component damage and the risk of serious personal injury.**

**⚠ WARNING: Carefully read cautionary information on product label. For EMERGENCY MEDICAL INFORMATION seek medical advice. In the USA or Canada on Ford/Motorcraft products call: 1-800-959-3673. For additional information, consult the product Material Safety Data Sheet (MSDS) if available. Failure to follow these instructions may result in serious personal injury.**

**NOTICE: Do not spill brake fluid onto painted or plastic surfaces or damage to surface may occur. If brake fluid is spilled onto a painted or plastic surface, immediately wash the surface with water.**

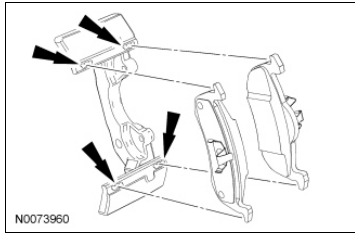
1. Check the brake fluid level in the brake master cylinder reservoir.
  - If required, remove the fluid until the brake master cylinder reservoir is half full.
2. Remove the wheel and tire. For additional information, refer to [Section 204-04](#).
3. **NOTICE: Do not allow the caliper and brake pad assembly to hang from the brake hose or damage to the hose may occur.**

Remove the 2 brake caliper guide pin caps and bolts and position the caliper and brake pad assembly aside.

- Support the caliper using mechanic's wire.
  - Inspect the guide pin threads for damage and inspect the guide pin bushings for wear/damage. Install a new guide pin(s) and bushing(s) as necessary.
  - To install, tighten to 38 Nm (28 lb-ft).
4. Remove the 2 brake caliper anchor plate bolts and the brake caliper anchor plate.
    - Inspect the caliper anchor plate bolt threads for damage and foreign material. Install cleaned and dried anchor plate bolts or install new as necessary.
    - To install, tighten to 190 Nm (140 lb-ft).
  5. Clean, dry and inspect the brake caliper anchor plate. Apply equal amounts of the supplied yellow



lubricant to the 4 brake pad contact points on the anchor plate as indicated.



6. Fill the master cylinder with clean, specified brake fluid.
  7. To install, reverse the removal procedure.
    - Apply the brake several times to verify correct brake operation.
-

## Brake Disc

### Removal and Installation

1. Remove the wheel and tire. For additional information, refer to [Section 204-04](#) .
2. **NOTICE: Do not allow the brake caliper and anchor plate assembly to hang by the flexible brake hose or damage to the hose may occur.**

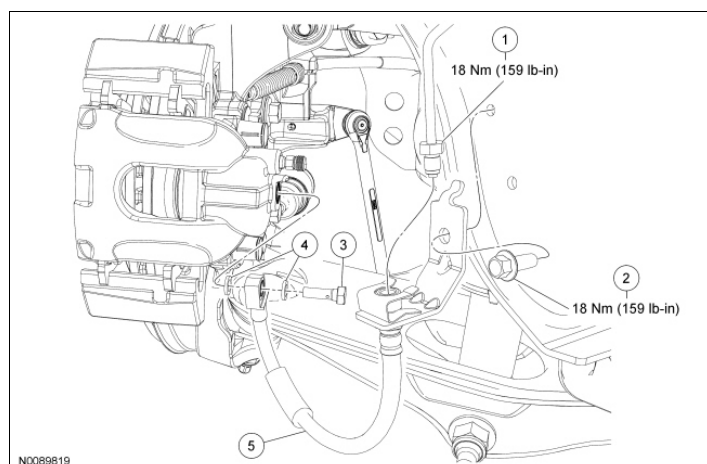
Remove the brake caliper anchor plate bolts and position the anchor plate and caliper assembly aside.

- Support the caliper and anchor plate assembly with mechanic's wire.
- Inspect the brake caliper anchor plate bolt threads for damage and foreign material. Install cleaned and dried anchor plate bolts or install new as necessary.
- To install, tighten to 190 Nm (140 lb-ft).

3. **NOTE:** If the brake disc binds on the parking brake shoe, remove the adjustment hole access plug and contract the parking brake shoe.

Remove the brake disc.

4. Inspect the brake disc and resurface or install a new brake disc as necessary. For additional information, refer to General Procedures in [Section 206-00](#) .
  5. To install, reverse the removal procedure.
-

**Brake Flexible Hose**

Item	Part Number	Description
1	--	Brake tube fitting (part of 2265)
2	--	Brake flexible hose bracket bolt
3	385116	Brake caliper flow bolt
4	2149	Copper washers (2 required)
5	2282	Brake flexible hose

**Removal and Installation**

**⚠ WARNING:** Do not use any fluid other than clean brake fluid meeting manufacturer's specification. Additionally, do not use brake fluid that has been previously drained. Following these instructions will help prevent system contamination, brake component damage and the risk of serious personal injury.

**⚠ WARNING:** Carefully read cautionary information on product label. For EMERGENCY MEDICAL INFORMATION seek medical advice. In the USA or Canada on Ford/Motorcraft products call: 1-800-959-3673. For additional information, consult the product Material Safety Data Sheet (MSDS) if available. Failure to follow these instructions may result in serious personal injury.

**NOTICE:** Do not spill brake fluid onto painted or plastic surfaces or damage to surface may occur. If brake fluid is spilled onto a painted or plastic surface, immediately wash the surface with water.

1. Remove the wheel and tire. For additional information, refer to [Section 204-04](#).
2. Remove the brake caliper flow bolt and discard the 2 copper washers.
  - Install new copper washers.
  - To install, tighten to 40 Nm (30 lb-ft).
3. Disconnect the brake tube fitting from the brake flexible hose.
  - To install, tighten to 18 Nm (159 lb-in).
4. Remove the brake flexible hose bracket bolt.
  - To install, tighten to 18 Nm (159 lb-in).
5. To install, reverse the removal procedure.