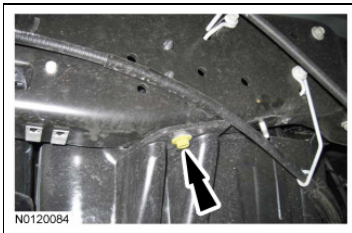
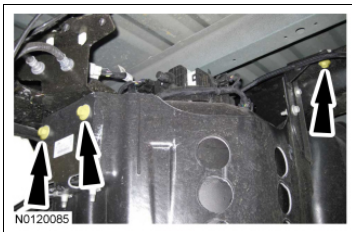


9. Install the reductant tank bolt.
- Tighten to 20 Nm (177 lb-in).



10. Tighten the 3 reductant tank bolts.
- Tighten to 20 Nm (177 lb-in).

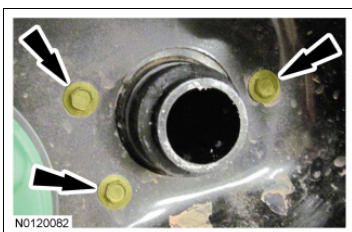


11. If equipped, install the fuel tank shield. For additional information, refer to Fuel Tank and Filler Pipe - Exploded View in [Section 310-01](#) .

All Vehicles

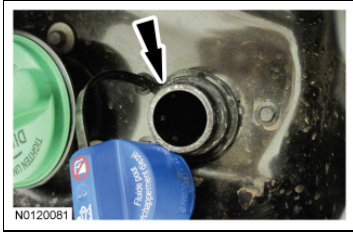
12. **NOTE:** Inboard frame mounted reductant tank filler hose shown, outboard similar.

Install the 3 reductant tank filler hose bolts.



13. **NOTE:** Inboard frame mounted reductant tank filler hose shown, outboard similar.

Attach the reductant tank filler hose cap retaining strap to the reductant tank filler hose.



14. **NOTICE:** Always refill the reductant tank with new reductant to avoid reductant system contamination.

Fill the reductant tank.

Reductant Pump Assembly

Removal

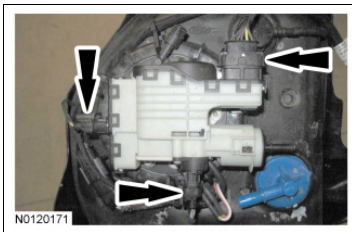
NOTE: If a new reductant pump is being installed, prime the pump using the syringe included in pump assembly kit. The reductant pump assembly kit includes a detailed instruction sheet to assist with the syringe and the reductant pump assembly priming procedure. [Click here to view a video version of this procedure.](#)

1. Remove the reductant tank. For additional information, refer to [Reductant Tank](#) in this section.
2. **NOTICE:** Clean the reductant tank of any dirt or foreign material before servicing the reductant pump assembly. In extreme dirt or dusty conditions it may be necessary to wash the reductant tank using a water hose. Before removing the reductant pump assembly, make sure that there is no residual dirt or foreign material around the reductant pump assembly, reductant heater and sender and lock ring. If dirt or foreign material enter the reductant tank O-ring area, damage to the reductant pump assembly, reductant heater and sender assembly or reductant leaks may occur.

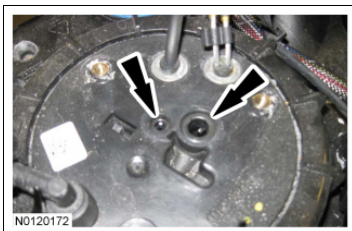
Clean the area around the reductant pump assembly.

3. **NOTE:** Inboard mounted reductant tank pump shown, outboard similar.

Disconnect the 3 reductant pump assembly electrical connectors.



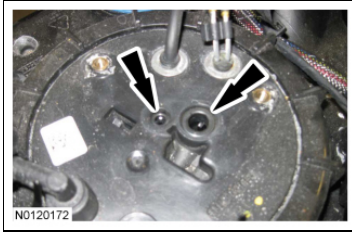
4. Remove the 3 reductant pump assembly bolts and remove the reductant pump assembly.
5. Remove and discard the 2 O-rings.



Installation

1. **NOTICE:** Make sure the O-ring area is clean of any dirt or foreign material before installing the O-rings. Failure to do so may cause a reductant pump assembly leak.

Install 2 new O-rings.



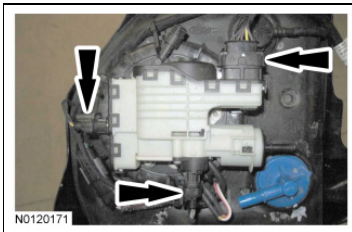
2. **NOTICE:** Make sure to tighten the reductant pump assembly bolts evenly. Failure to do so may cause a reductant pump assembly leak.

Install the 3 reductant pump assembly bolts and the reductant pump assembly.

- Evenly tighten the reductant pump assembly bolts.
- Tighten to 5 Nm (44 lb-in).

3. **NOTE:** Inboard mounted reductant tank pump shown, outboard similar.

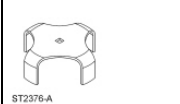
Connect the 3 reductant pump assembly electrical connectors.



4. Install the reductant tank. For additional information, refer to [Reductant Tank](#) in this section.
-

Reductant Heater and Sender Assembly

Special Tool(s)

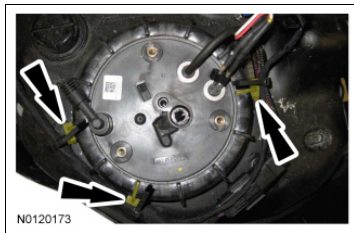
| | |
|---|--|
|  | Wrench, Fuel Tank Sender Unit 310-069 |
|---|--|

Removal

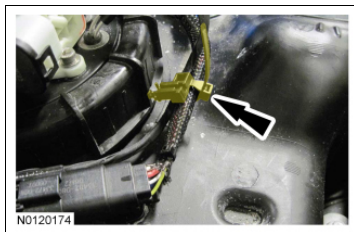
NOTE: Inboard mounted reductant tank heater and sender procedure shown, outboard similar.

1. Remove the reductant tank. For additional information, refer to Reductant Tank in this section.
2. Remove the reductant pump assembly. For additional information, refer to Reductant Pump Assembly in this section.
3. **NOTE:** The outboard mounted reductant tank heater and sender has 4 wire routing retainers attached to the lock ring. Note the location of all wire routing retainers for installation.

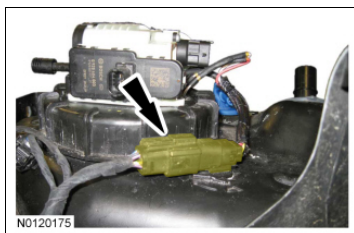
Detach the 3 wire routing clips from the reductant heater and sender assembly lock ring.



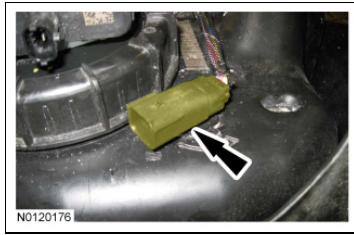
4. Remove the wire routing clip from the wire harness.



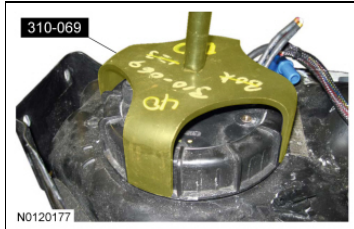
5. Disconnect the electrical connector and remove the wire harness.



6. Detach the electrical connector from the reductant tank.



7. Using the Fuel Tank Sender Unit Wrench, remove the reductant heater and sender assembly lock ring.



8. **NOTICE:** Do not pry the top of the reductant heater and sender assembly out of the reductant heater and sender assembly seal. Doing so may cause reductant heater and sender assembly seal damage.

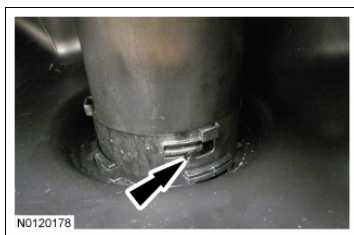
Remove the top of the reductant heater and sender assembly out of the reductant heater and sender assembly seal.

9. Remove the reductant heater and sender assembly seal.
 - Discard the reductant heater and sender assembly seal.

10. **NOTE:** Note the position of the reductant heater and sender assembly in the reductant tank for installation.

Reach inside the reductant tank opening, and turn the reductant heater and sender assembly counterclockwise to release the 4 reductant heater and sender assembly retainers (one shown) from the base in the bottom of the reductant tank.

- Remove the reductant heater and sender assembly from the tank.



Installation

1. **NOTE:** Install the reductant heater and sender assembly in the same position in the reductant tank as noted during disassembly.

NOTE: Make sure the reductant heater and sender assembly is fully seated in the retainers in the bottom of the reductant tank.

Install the reductant heater and sender assembly in the tank.