

## CONTROL PATTERN SELECTOR VALVE

### Description

The control pattern selector valve allow the operator to quickly and easily change the joysticks hydraulic function from ISO control pattern to the Standard control pattern.

The control pattern selector valve in ISO control pattern selection will allow the left joystick to operate the arm and the right joystick to operate the boom.

The control pattern selector valve in Standard control pattern selection will allow the left joystick to operate the boom and the right joystick to operate the arm.

### Removal And Installation

Remove the right console cover. (See Console Cover Removal And Installation on Page 40-50-1.)

Remove the right console base. (See Console Base Cover Removal And Installation on Page 40-50-2.)

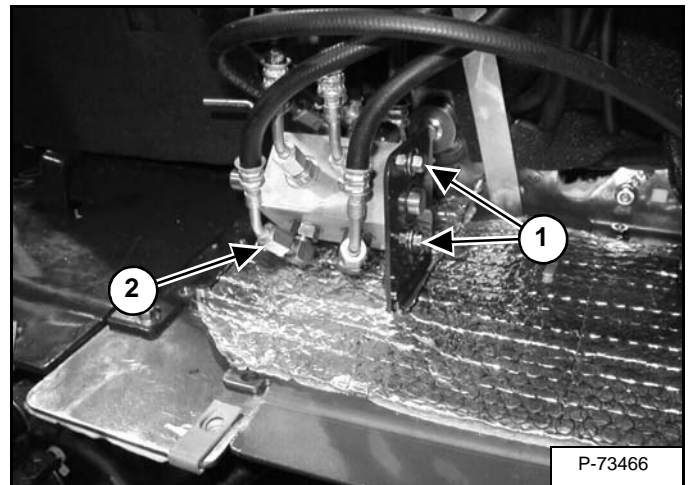
Mark all hydraulic hoses for proper installation.

## IMPORTANT

**When repairing hydrostatic and hydraulic systems, clean the work area before disassembly and keep all parts clean. Always use caps and plugs on hoses, tubelines and ports to keep dirt out. Dirt can quickly damage the system.**

I-2003-0888

Figure 20-100-1



Remove the two bolts (Item 1) [Figure 20-100-1] from the rear of the valve.

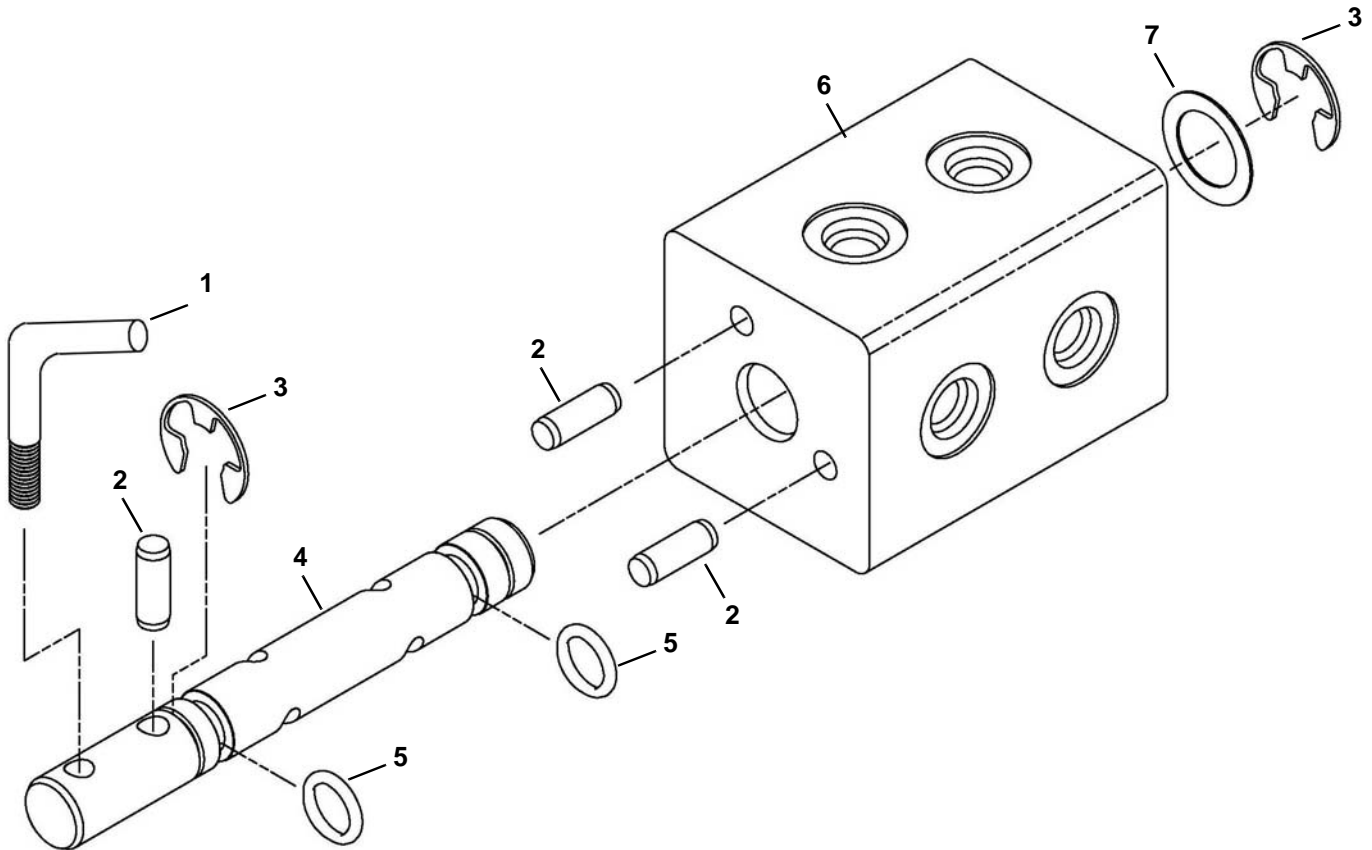
Remove the eight hydraulic hose from the control pattern selector valve (Item 2) [Figure 20-100-1].

Remove the control pattern selector valve from the excavator.

## CONTROL PATTERN SELECTOR VALVE (CONT'D)

### Parts Identification

1. Handle
2. Roll Pin
3. Snap Ring
4. Spool
5. O-Ring
6. Valve Block
7. Washer



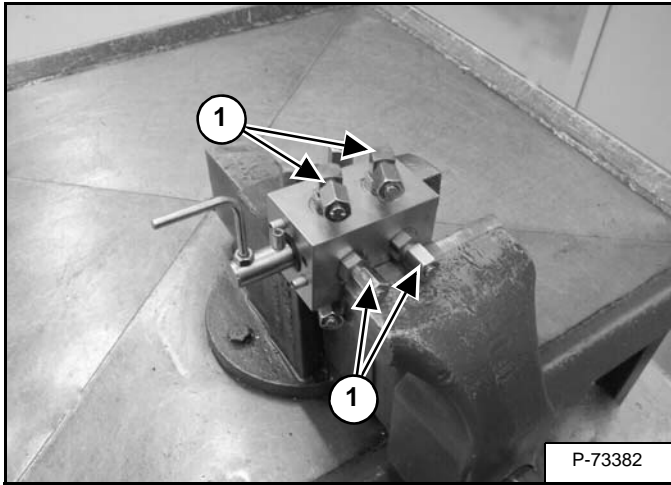
TS-1353A

## CONTROL PATTERN SELECTOR VALVE (CONT'D)

### Disassembly and Assembly

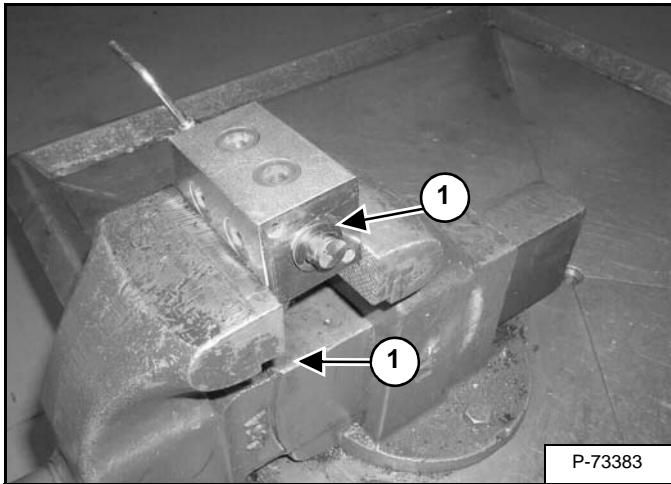
Clean the outside of the valve before disassembly.

Figure 20-100-2



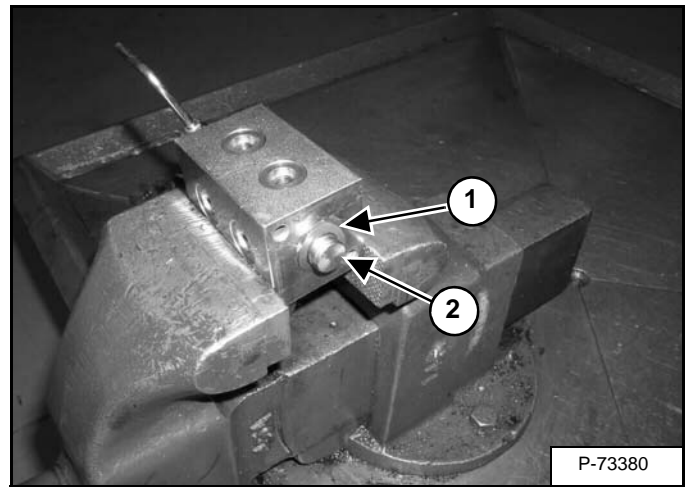
Remove all the fittings (Item 1) [Figure 20-100-2].

Figure 20-100-3



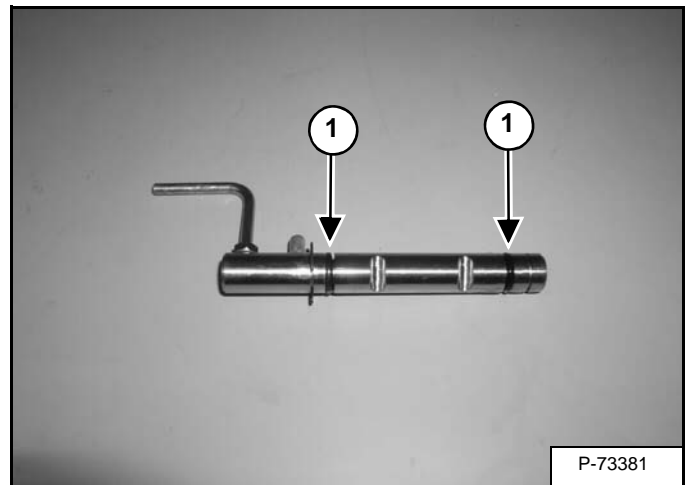
Remove the snap ring (Item 1) [Figure 20-100-3].

Figure 20-100-4



Remove the wave washer (Item 1) and the spool (Item 2) [Figure 20-100-4].

Figure 20-100-5



Remove the O-rings (Item 1) [Figure 20-100-5] from the spool.

**Installation:** Clean all parts in solvent and dry with compressed air. Inspect all parts for wear or damage. Replace any worn or damaged parts. Always install new seals and O-rings. Lubricate all seals and O-rings with clean hydraulic fluid before installation.