

CENTER SWIVEL JOINT

Removal and Installation (through upper access removal)

Remove the upper works from the swing gear and track frame. (See Page 4–3.)

IMPORTANT

When repairing hydrostatic and hydraulic systems, clean the work area before disassembly and keep all parts clean. Always use caps and plugs on hoses, tubelines and ports to keep dirt out. Dirt can quickly damage the system.

I-2003-0888

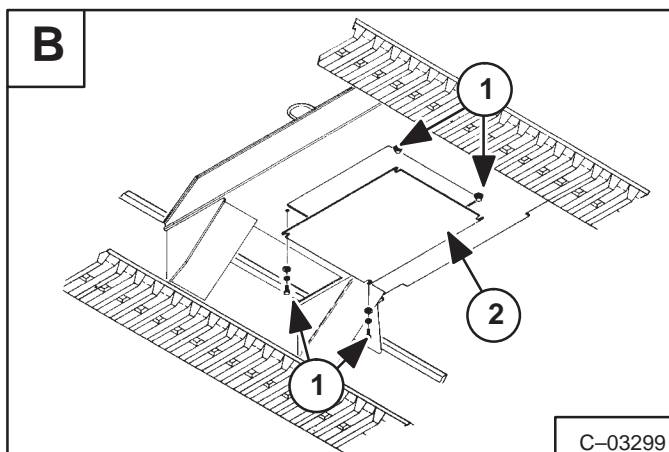
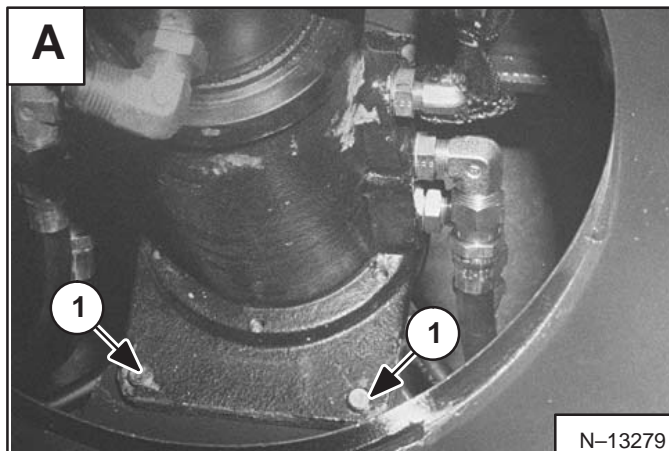
Mark all the hoses for correct installation.

Disconnect the hoses from the swivel joint [A].

Remove the bolts from the plate (Item 1) [A] below the center swivel joint.

Installation: Tighten the bolts to 48–55 ft.-lbs. (65–75 Nm) torque. Use LOCTITE #242 on the bolt threads.

Remove the center swivel joint from the track frame.



Removal and Installation (through bottom access cover)

Lower blade and boom to the ground.

Stop Engine.

! WARNING

Put jackstands under the blade and front and rear corners of the under carriage before working under the machine. Failure to block up the machine may allow it to move or fall and result in injury or death.

W-2218-1195

Remove 2 and loosen 2 bolts (Item 1) [B] from the access cover (Item 2) [B] and remove the access plate (Item 2) [B] from the bottom of the under carriage. The plate mounting holes are slotted so that the plate can be slid out.

Installation: Tighten the bolts to 30–37 ft.-lbs. (40–50 Nm) torque.

CENTER SWIVEL JOINT (Cont'd)

Removal and Installation (through bottom access cover) (Cont'd)

IMPORTANT

When repairing hydrostatic and hydraulic systems, clean the work area before disassembly and keep all parts clean. Always use caps and plugs on hoses, tubelines and ports to keep dirt out. Dirt can quickly damage the system.

I-2003-0888

Mark or tag the hoses and fittings for correct installation [A].

Remove the bottom eight hoses from the swivel joint [A]. Remove the six side elbows from the side of the swivel joint.

NOTE: Mark fitting alignment angle for ease of installation.

Remove the floor mat and floor panels. (Refer to Page 5-2 for the correct procedure.)

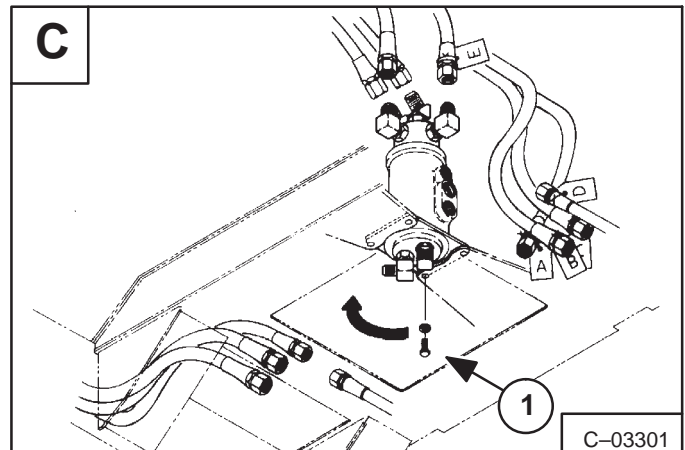
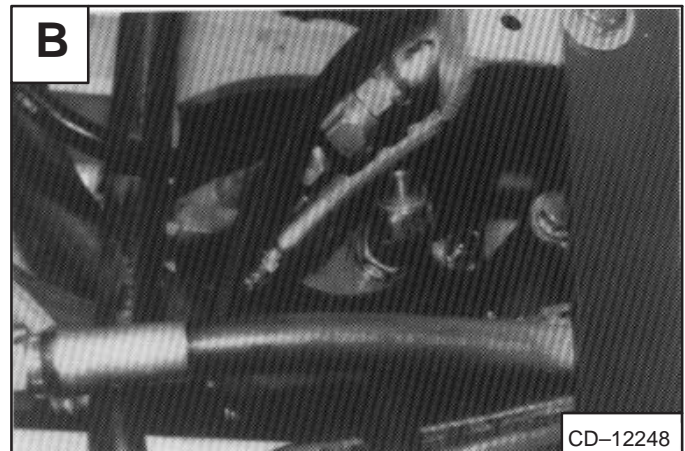
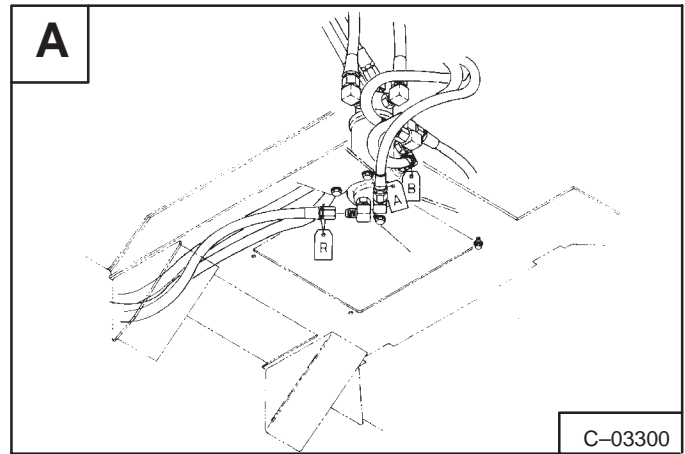
Remove the top seven hoses from the swivel joint from the top side [B].

Remove the four bolts (Item 1) [C] holding the swivel joint to the track frame.

Installation: Tighten the bolts to 48–55 ft.-lbs. (65–75 Nm) torque. Use LOCTITE #242 on the bolt threads.

Rotate the swivel joint 90 degrees [C]. Lower the swivel joint out of the bottom of under carriage.

Inspect the fitting O-rings for damage and replace as necessary.

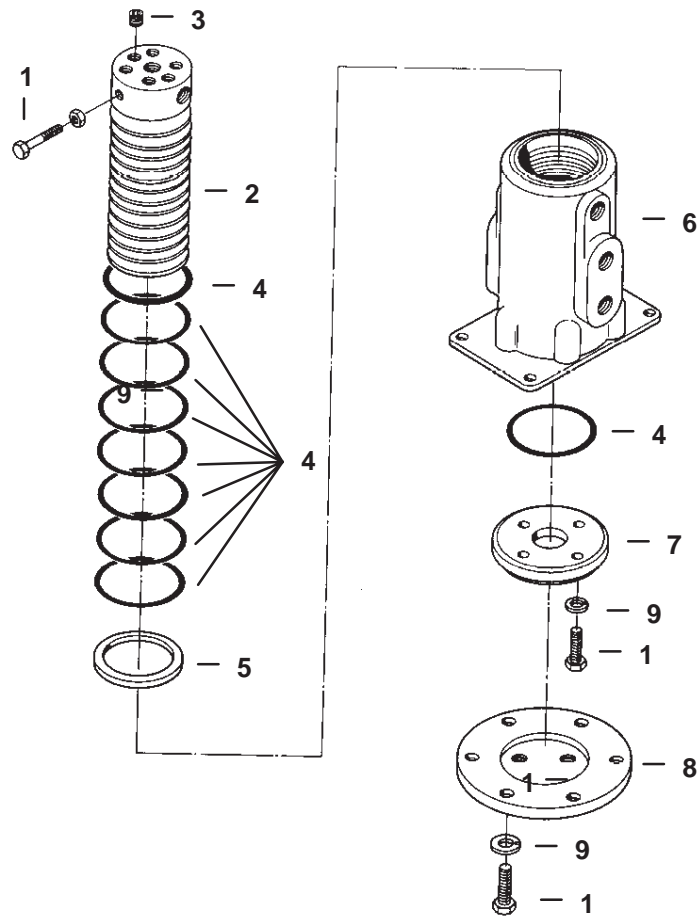


CENTER SWIVEL JOINT (Cont'd)

Parts Identification

SWIVEL JOINT

1. Bolt
2. Rotor
3. Plug
4. O-Rings
5. Seal
6. Body
7. Cap
8. Cover
9. Washer



C-03160



MAIN FRAME AND TRACKS

	Page Number
ARM	
Removal and Installation	5-9
BLADE	
Removal and Installation	5-12
BOOM	
Removal and Installation	5-9
BOOM SWING BRACKET	
Removal and Installation	5-11
BUCKET	
Removal and Installation	5-8
CENTER FLOOR PANEL	
Removal and Installation	5-4
ENGINE COVER	
Removal and Installation	5-3
FUEL TANK	
Removal and Installation	5-7
INSPECTION COVER	
Removal and Installation	5-6
NORDIC CAB (OPTIONAL)	
Removal and Installation	5-45
NORDIC SEAT AND MOUNTING FRAME (OPTIONAL)	
Removal and Installation	5-4
REAR FLOOR PANEL	
Removal and Installation	5-5
ROPS	
Front Window Removal	5-45
Side Window Removal	5-47
ROPS WINDOW	
Removal & Installation	5-46
SEAT AND MOUNTING FRAME	
Removal and Installation	5-3
SWING MOTOR COVER	
Removal and Installation	5-5
TOOL BOX	
Removal and Installation	5-6
TRACK	
Removal and Installation	5-14
Track Tension Adjustment	5-13
TRACK FRAME	
Disassembly and Assembly	5-15
TRACK IDLER	
Assembly	5-20, 5-27
Disassembly	5-18, 5-25
Parts Identification	5-17, 5-24
TRACK ROLLER	
Assembly	5-34, 5-41
Disassembly	5-32, 5-39
Parts Identification	5-31, 5-38

MAIN FRAME & TRACKS