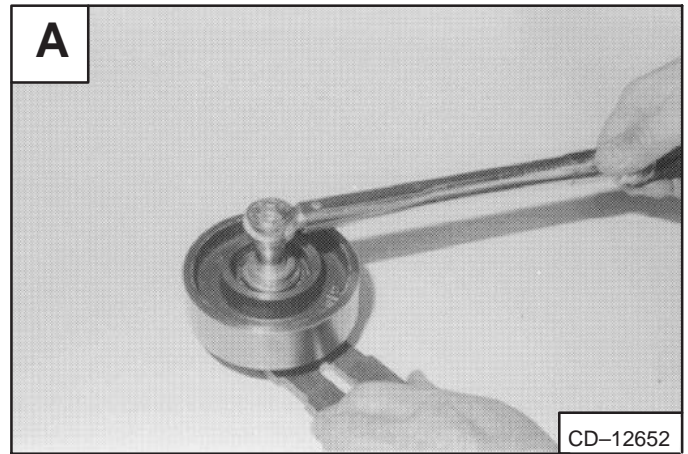


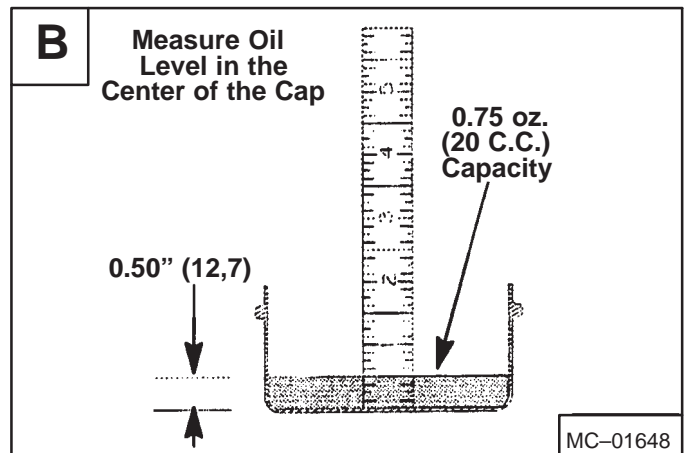
DRIVE BELT TENSIONER PULLEY (Cont'd)

Assembly (Cont'd)

Tighten the bolt to 25–28 ft.-lbs. (43–38 Nm) torque [A].

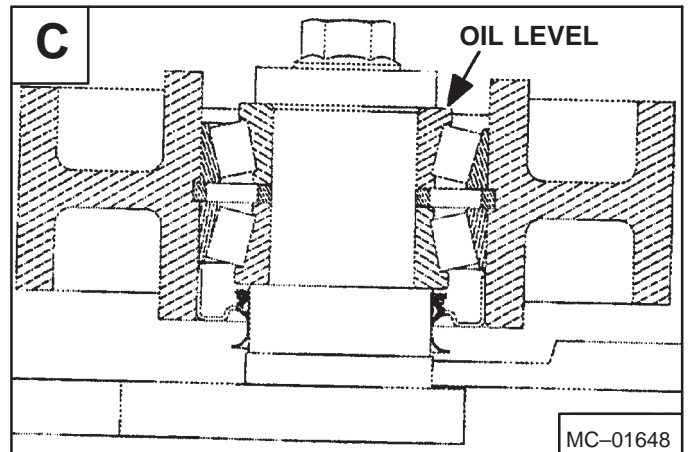


Use only 15W/50 synthetic oil (Example: Mobil One) for the bearings. Use the cap and add oil until it is at the 0.50" (12,7 mm) mark on the scale, which should be 0.75 oz. (20 C.C.) of oil [B].



Add the oil slowly, at one location of the bearing which will allow the trapped air to escape from the other side [C].

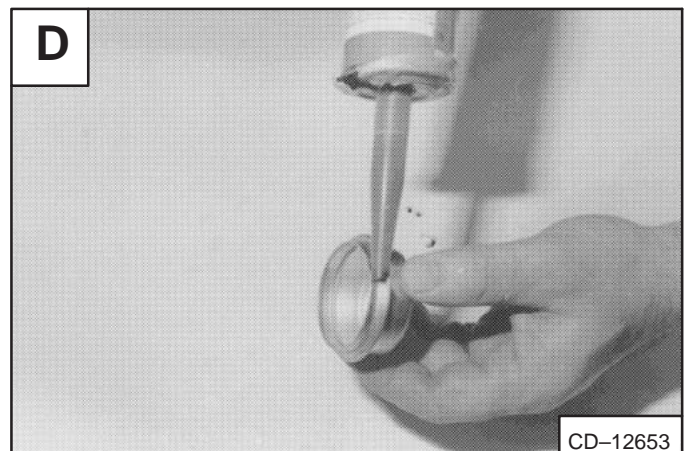
NOTE: Oil capacity is very critical, do not add any more and/or any less oil to the idler pulley.



Check the cap sealing edge to make sure it is not damaged. Replace the cap as needed.

Make sure the sealing edge on the hub bore and cap sealing edge is clean and free of oil, put a bead of sealant (P/N 6633538) on the cap [D].

Install the cap.



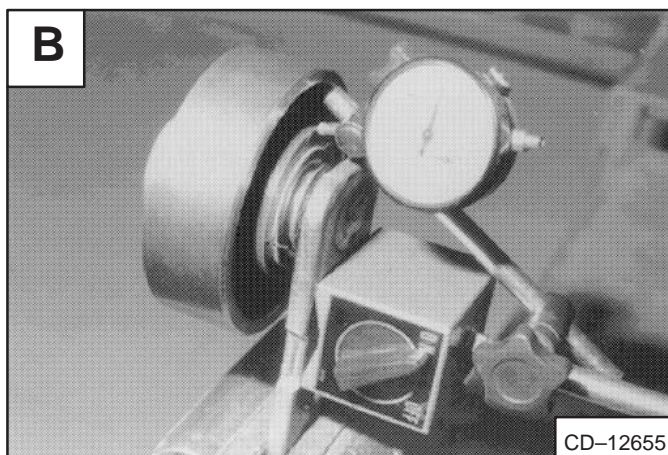
DRIVE BELT TENSIONER PULLEY (Cont'd)

Checking Pulley End Play

Install the pulley/mounting bracket assembly in to vise [A].

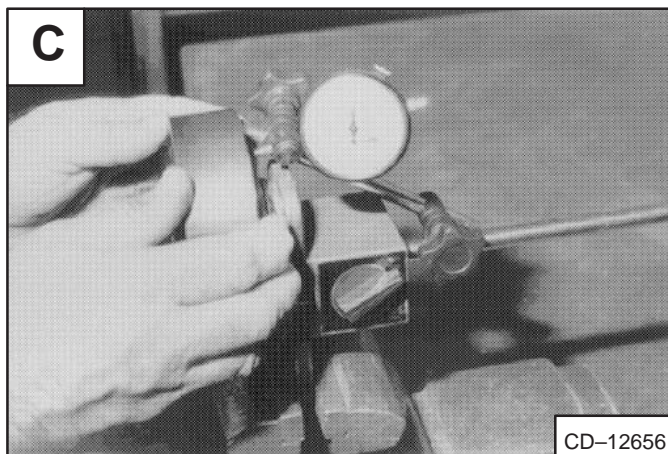


Install a dial indicator on the pulley hub [B].



Move the pulley by hand, back and forth. The correct end play is 0.005–0.013" (0,13–0,33 mm) [C].

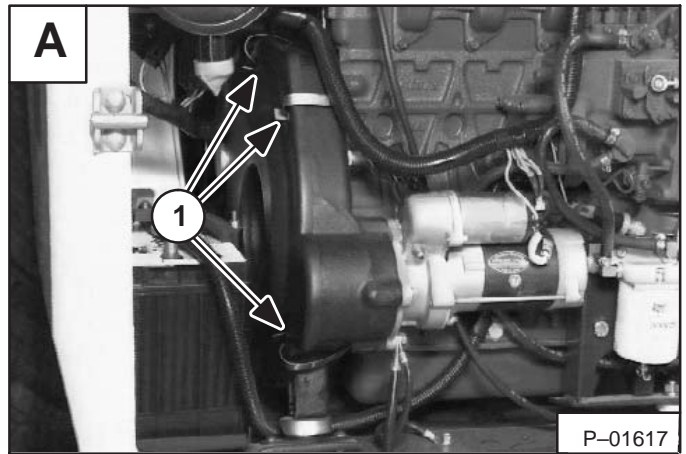
If the end play is not correct, there is no adjustment. Replace the hub, pulley and/or bearings.



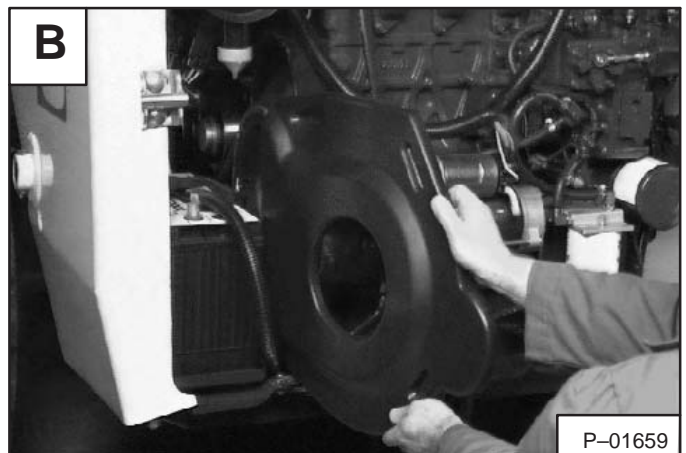
SPRING LOADED DRIVE BELT IDLER

Removal And Installation

Remove the belt shield fasteners (Item 1) [A].



Remove the belt shield [B].

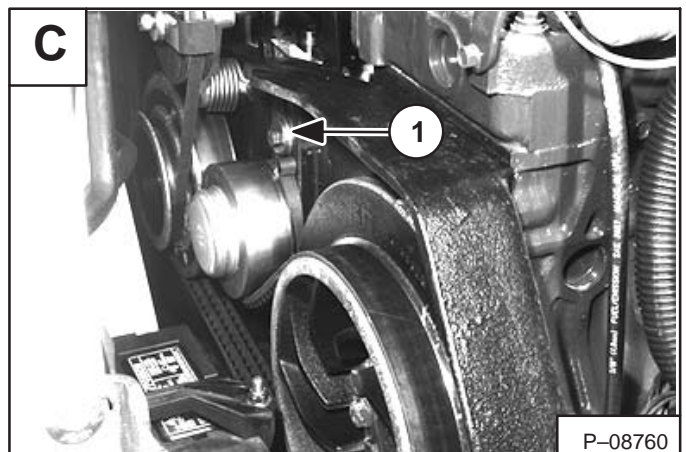


Loosen and remove the tensioner pulley mounting belt (Item 1) [C].

Installation: Tighten the bolt to 60–65 ft.-lbs. (82–88 Nm) torque.

Remove the belt tensioner pulley from the housing.

Installation: See Page 1–25 for the correct procedure for installation and adjusting the spring loaded drive belt idler.

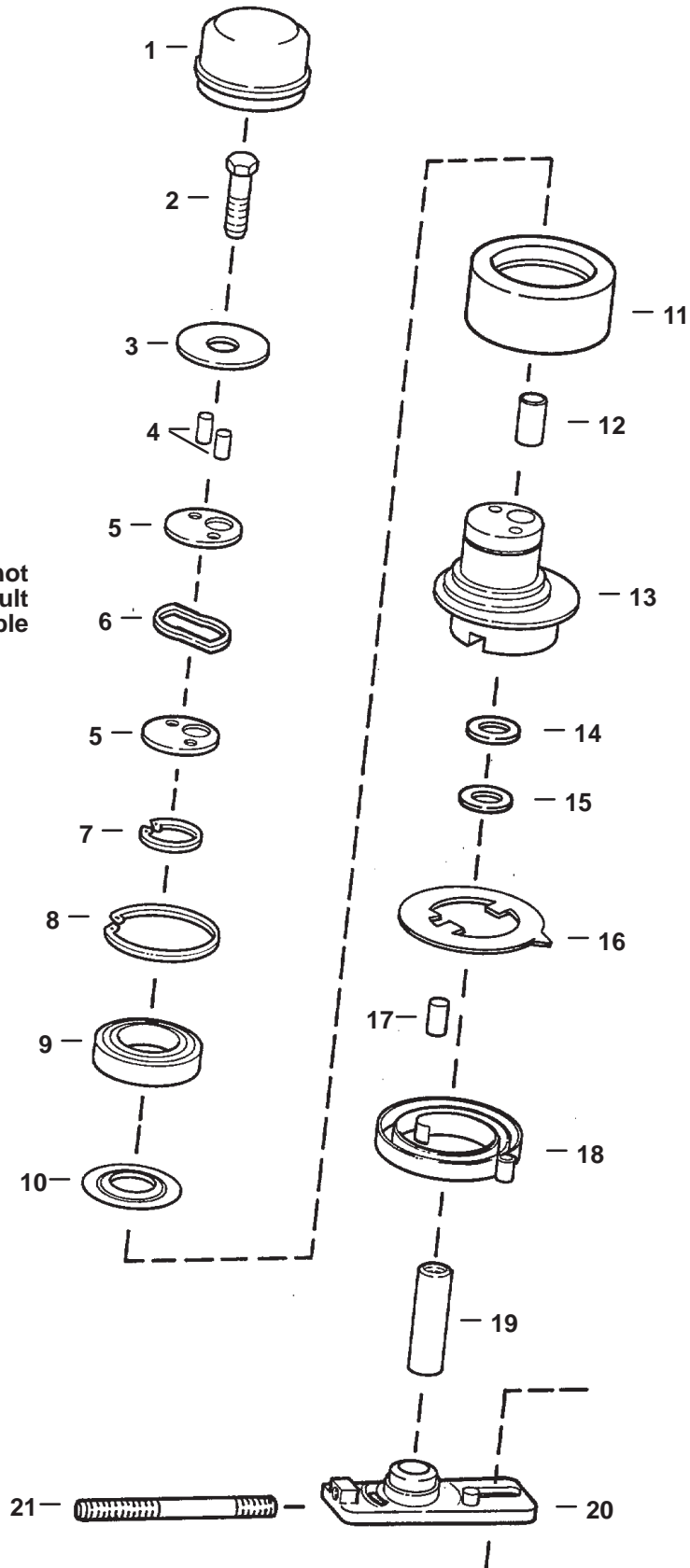


SPRING LOADED DRIVE BELT IDLER (Cont'd)

Parts Identification

1. Cover
2. Bolt
3. Washer
4. Pins
5. Washer
6. Spring
7. Snap Ring
8. Snap Ring
9. Bearing
10. Dust Shield
11. Pulley
12. Bushing
13. Hub
14. Washer
15. Seal
16. Arrow Indicator Plate
17. Locating Pin
18. Spring
19. Shaft
20. Bracket
21. Rod

NOTE: Drive idler parts are not available individually. Consult parts catalog for available sub-assemblies.



E-02296