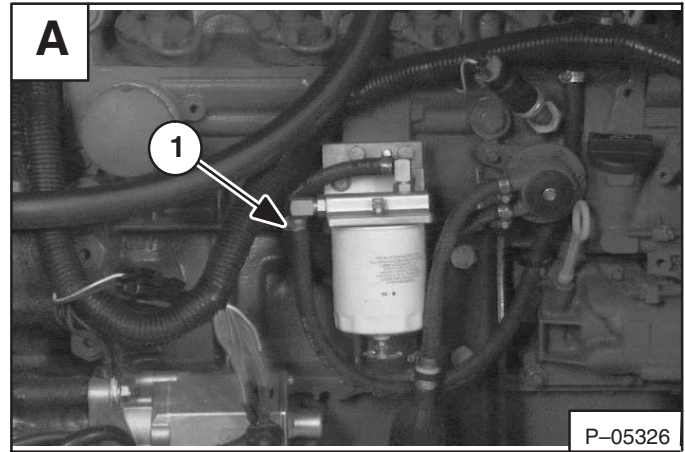


ENGINE/HYDROSTATIC PUMP ASSEMBLY (Cont'd)

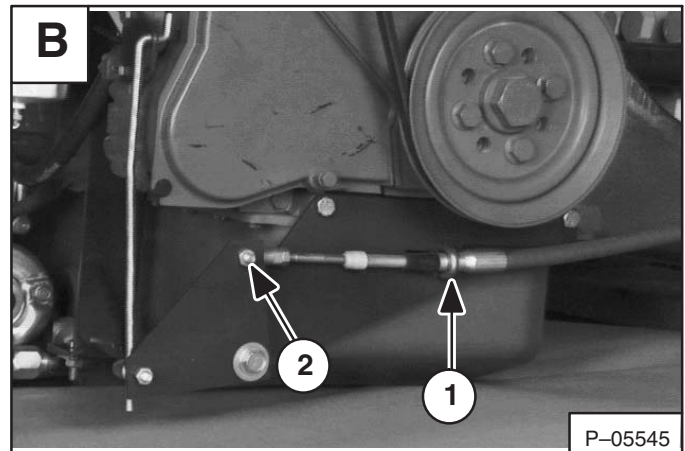
Removal And Installation (Cont'd)

Disconnect the fuel hose (Item 1) [A] from the fuel filter.



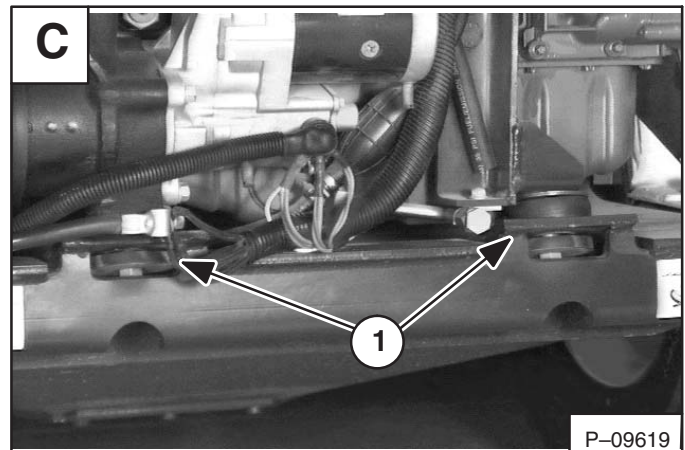
At the right side of the engine, remove the u-bolt (Item 1) [B] from the throttle cable.

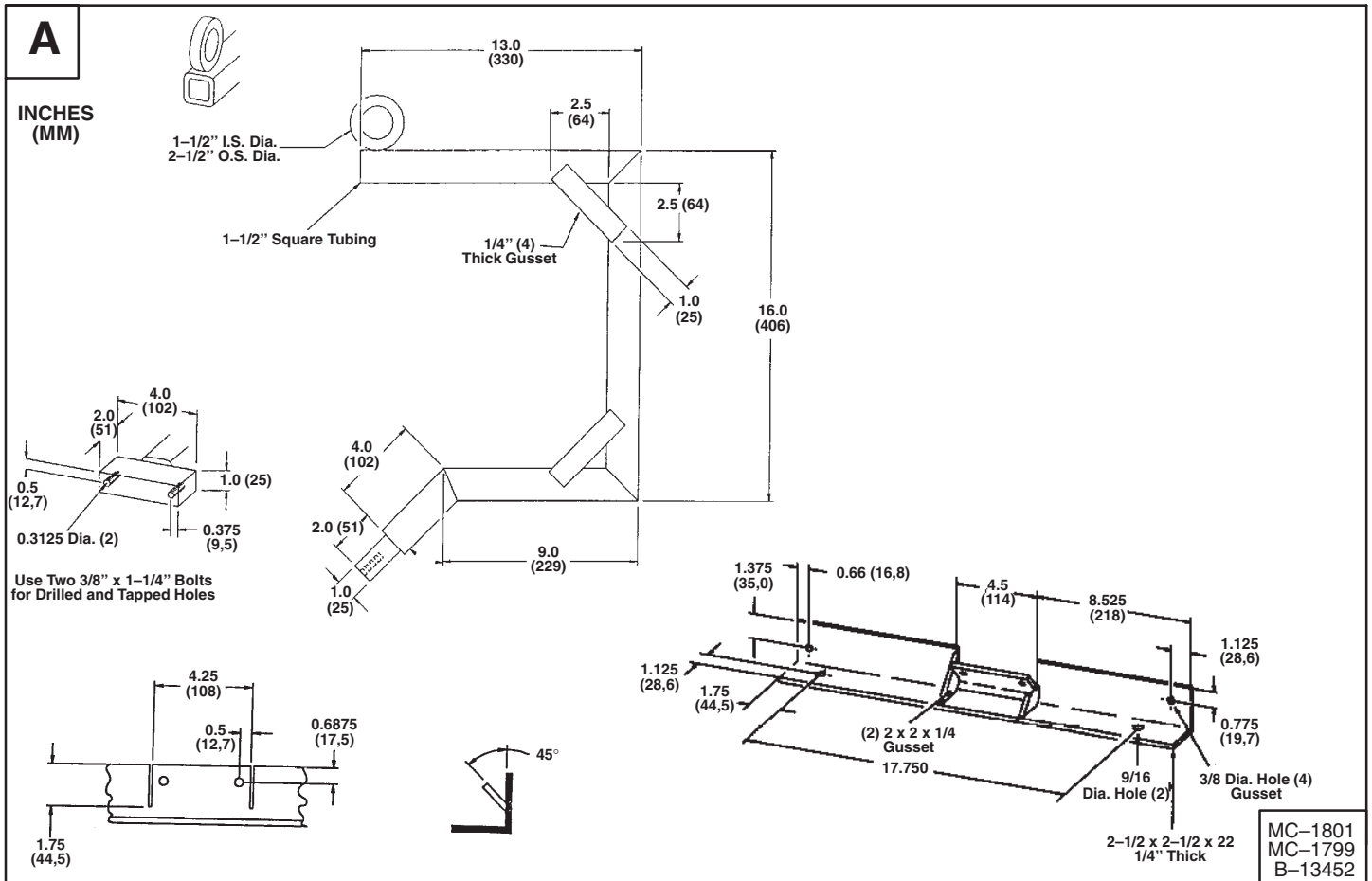
Disconnect the cable end (Item 2) [B] at the linkage.



Remove the left and right rear engine mounting bolts (Item 1) [C] and nuts.

Installation: Tighten the bolts and nuts to 61–69 ft.-lbs. (83–94 Nm) torque.





ENGINE/HYDROSTATIC PUMP ASSEMBLY (Cont'd)

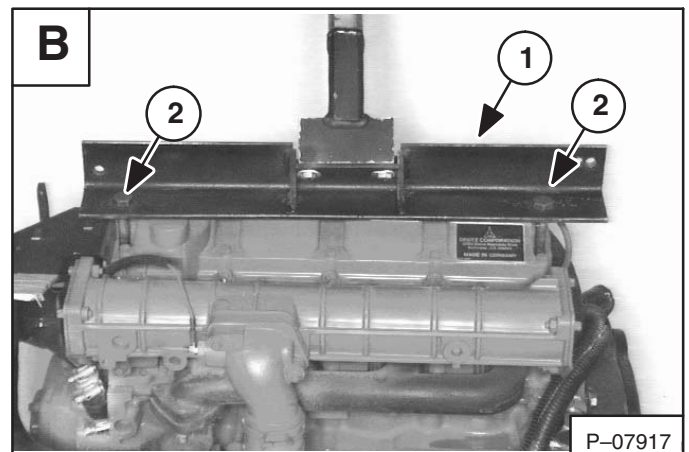
Removal And Installation (Cont'd)

Use the dimensions from figure [A] to make engine removal and installation brackets.

Install the lift bracket (Item 1) [B] on the engine.

Tighten the bolts (Item 2) [B] until the lift bracket is held firmly against the valve cover.

NOTE: Bolts required are two 12 x 80 mm x 1.75 threads.



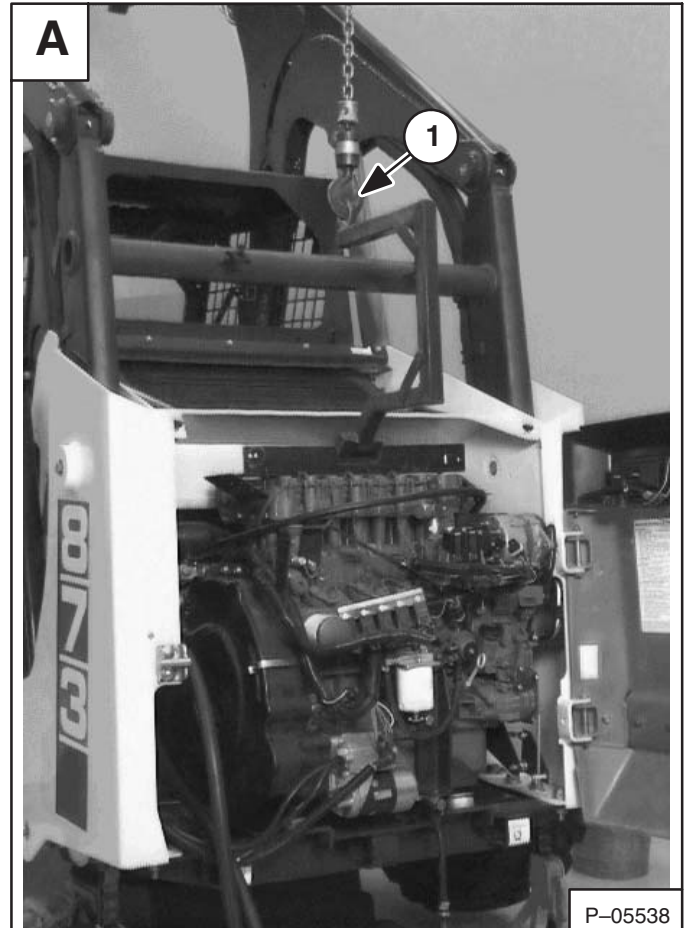
ENGINE/HYDROSTATIC PUMP ASSEMBLY (Cont'd)

Removal And Installation (Cont'd)

Connect a chain hoist to the ring (Item 1) [A] on the lift bracket.

Remove the engine/hydrostatic pump assembly from the loader [A].

NOTE: Residue remaining in the engine oil cooler may contaminate the engine oil and damage the engine. In the event of severe engine oil contamination, oil cooler replacement is recommended. Drain and flush the cab heater and plumbing thoroughly.



ENGINE MOUNTS

Replacement

Use the following procedure to install new engine mounts:

Remove the existing mount from the engine. Refer to engine removal and installation for engine mount locations.

Replace all four engine mounts (two front and two rear).

Use the parts shown to install the new engine mounts [A].

Item 1 – Square Nut – Used on left side engine mounts

Item 2 – Hex Nut – Used on right side engine mounts

Item 3 – Mount Washer

Item 4 – Engine Mount

Item 5 – Tube Spacer

Item 6 – Snubbing Washer

Item 7 – Mounting Bolt

Install the new engine mount as shown in the cut away side view [B] or [C].

Tighten the mounting bolts to 61–69 ft.-lbs. (83–94 Nm) torque.

